

Product datasheet for **RC219718**

ZNF454 (NM_182594) Human Tagged ORF Clone

Product data:

Product Type:	Expression Plasmids
Product Name:	ZNF454 (NM_182594) Human Tagged ORF Clone
Tag:	Myc-DDK
Symbol:	ZNF454
Mammalian Cell Selection:	Neomycin
Vector:	pCMV6-Entry (PS100001)
E. coli Selection:	Kanamycin (25 ug/mL)



[View online »](#)

ORF Nucleotide Sequence:

>RC219718 ORF sequence
 Red=Cloning site Blue=ORF Green=Tags(s)

TTTTGTAATACGACTCACTATAGGGCGGCCGGAATTCGTCGACTGGATCCGGTACCGAGGAGATCTGCC
 GCC**CGGATCGCC**

ATGGCTGTCAGCCACCTGCCAACCATGGTCCAGGAATCGGTGACCTTCAAGGATGTGGCTATACTGTTC
 CCCAGGAAGAGTGGGGCAGCTGAGCCCGCCAGAGGGCCCTGTACAGGACGTGATGCTGGAGAACTA
 CAGCAACCTGGTCTCACTGGGACTCTTAGGACCCAAACCAGATACGTTTTCCAGCTAGAAAAAAGGAA
 GTGTGGATGCCAGAGGACACCCCTGGAGGCTTCTGTCTTGACTGGATGACTATGCCTGCCAGTAAGAAAT
 CTAAGTCAAGGCAGAGATTCTGAAGAAGAATTGGATCAATGGACAATAAAGGAAAGATTCAAGTACAG
 TAGTCACTGGAAGTGTGCTAGCCTGCTGGAGTGGCAATGTGGAGGCCAGGAGATCAGTTTGCAGCGAGTG
 GTACTCACTACCCCAACACCCCATCACAGGAATGTGATGAATCCGGGAGCACTATGAGCTCATCTCTTC
 ACAGTGTCAAAGTCAGGATTTCAACCTAGCAAAAATGCCTTTGAGTGTAGTGTGGAAAAGTCTT
 CTCTAAGAGTTCAACTCTTAATAAACATCAGAAAATTCATAATGAAAAAATGCAAAATCAGAAAATTCAT
 ATTAAGGAGAAAAAGATATGAATGTAGAGAATGTGGGAAAGCCTTTACCAGAGTACGCACCTTATCCATC
 ACCAAAGAATTCACACTGGCGAGAAACCTATGAATGTAGGAATGTGGCAAGGCCTTCTCAGTGAGCTC
 CTCACTTACGTACCATCAGAAAATTCATACTGGAGAGAAGCCTTTTGAATGCAACTTATGTGAAAAAGCT
 TTTATCCGAAATATACACCTTGCCCATCATAGAAATACATACTGGAGAGAAAACCTTTTAAATGTAACA
 TTTGTGAAAAAGCCTTTGTGTGCAGGGCACACCTTACCAACACCAGAATATCCACAGTGGAGAGAAACC
 CTATAATGCAATGAATGTGGAAAAGCCTTTAATCAGAGTACAAGTTTCTTTCAGCATCAGAGAATTCAC
 ACTGGAGAGAAAACCTTTGAATGTAATGAATGTGGGAAAGCCTTACAGGTGAACCTTCCCTTACTGAAC
 ATCAGAGAATTCATACTGGAGAGAAAACCTTATAAATGTAATGAATGTGGGAAAGCTTTTCAGGATAATTC
 ATCCTTTGCACGACATCGGAAAATTCACACTGGAGAGAAAACCTTACAGATGTGGCTTGTGTGAGAAAAGCC
 TTTCCGGACCAATCAGCACTAGCCCAACATCAGAGAATTCATACTGGGAAAAACCTTATACATGTAACA
 TATGTGAAAAAGCCTTTCAGTGACCATTCAGCCCTTACCAACATAAGAGAATTCATACTAGGAAAAACCC
 TTACAAATGTAATACTGTGAGAAAAGCCTTTATCCGAAGCACTCACCTGACTCAACATCAGAGGATTCAC
 ACAGGAGAGAAAACCTTATAAATGTAATAAATGTGGGAAAGCTTTTAAACCAGACTGCAACCTCATTACAG
 ATCAGAGACATCATATTGGAGAGAAG

ACGCGTACGCGGCCGCTCGAGCAGAAACTCATCTCAGAAGAGGATCTGGCAGCAAATGATATCCTGGATT
 ACAAGGATGACGACGATAAGGTTTAA

Protein Sequence:

>RC219718 protein sequence
 Red=Cloning site Green=Tags(s)

MAVSHLPTMVQESVTFKDVAILFTQEEWGQLSPAQRALYRDVMLENYSNLVSLGILLGPKPDTFSQLEKRE
 VWMPEDTPGGFCLDWMTPASKKSTVKAEIPEEELDQWTIKERFSSSSHWCASLLEWQCGGQEI SLQRV
 VLTHPNTPSQECDESGSTMSSSLHSAQSQGFQPSKNAFECSECGKVF SKSSTLNKHQKIHNKNNANQKIH
 IKEKRYECRECGKAFHQSTHLIHHQRIHTGEKPYECKEKGKAFSVSSSLTYHQIHTGEKPFECNLGKA
 FIRNIHLAHHRIHTGEKPFKCNICEKAFVCRHLTKHQNIHSGEKPYKNECGKAFNQSTSFLQHQRIH
 TGEKPFECNECGKAFRVNSSLTEHQRIHTGEKPYKNECGKAFRDNSSFARHRKIHTGEKPYRCGLCEKA
 FRDQSALAQHQRIHTGEKPYTCNICEKAFSDHSALTQHKRIHTREKPYKCKICEKAFIRSTHLTQHQRIH
 TGEKPYKCNKCGKAFNQANLIHQHRIHGEK

TRTRPLEQKLISEEDLAANDILDYKDDDDKV

Chromatograms:

https://cdn.origene.com/chromatograms/mk6609_c06.zip

Restriction Sites:

Sgfl-Mlul

Cloning Scheme:


ACCN: NM_182594

ORF Size: 1566 bp

OTI Disclaimer: The molecular sequence of this clone aligns with the gene accession number as a point of reference only. However, individual transcript sequences of the same gene can differ through naturally occurring variations (e.g. polymorphisms), each with its own valid existence. This clone is substantially in agreement with the reference, but a complete review of all prevailing variants is recommended prior to use. [More info](#)

OTI Annotation: This clone was engineered to express the complete ORF with an expression tag. Expression varies depending on the nature of the gene.

Components: The ORF clone is ion-exchange column purified and shipped in a 2D barcoded Matrix tube containing 10ug of transfection-ready, dried plasmid DNA (reconstitute with 100 ul of water).

- Reconstitution Method:**
1. Centrifuge at 5,000xg for 5min.
 2. Carefully open the tube and add 100ul of sterile water to dissolve the DNA.
 3. Close the tube and incubate for 10 minutes at room temperature.
 4. Briefly vortex the tube and then do a quick spin (less than 5000xg) to concentrate the liquid at the bottom.
 5. Store the suspended plasmid at -20°C. The DNA is stable for at least one year from date of shipping when stored at -20°C.

RefSeq: [NM_182594.4](#)

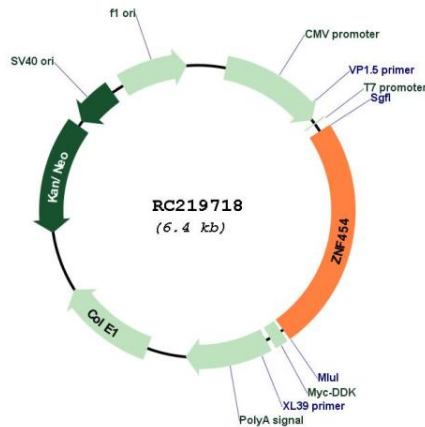
RefSeq Size: 2114 bp

RefSeq ORF: 1569 bp

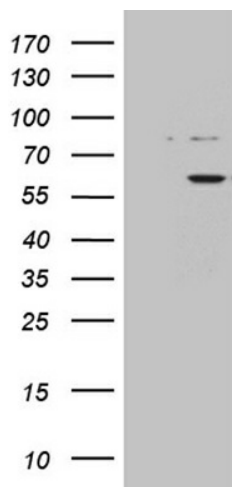
Locus ID: 285676

UniProt ID: [Q8N9F8](#)

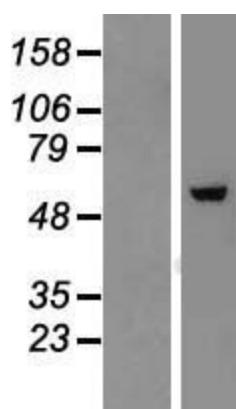
Cytogenetics: 5q35.3
Protein Families: Transcription Factors
MW: 60 kDa
Gene Summary: May be involved in transcriptional regulation.[UniProtKB/Swiss-Prot Function]

Product images:


Circular map for RC219718



HEK293T cells were transfected with the pCMV6-ENTRY control (Cat# [PS100001], Left lane) or pCMV6-ENTRY ZNF454 (Cat# RC219718, Right lane) cDNA for 48 hrs and lysed. Equivalent amounts of cell lysates (5 ug per lane) were separated by SDS-PAGE and immunoblotted with anti-ZNF45 (Cat# [TA811041]). Positive lysates [LY405474] (100ug) and [LC405474] (20ug) can be purchased separately from OriGene.



Western blot validation of overexpression lysate (Cat# [LY405474]) using anti-DDK antibody (Cat# [TA50011-100]). Left: Cell lysates from untransfected HEK293T cells; Right: Cell lysates from HEK293T cells transfected with RC219718 using transfection reagent MegaTran 2.0 (Cat# [TT210002]).