

Product datasheet for RC219705

KLRG1 (NM_005810) Human Tagged ORF Clone

Product data:

Product Type: Expression Plasmids
Product Name: KLRG1 (NM_005810) Human Tagged ORF Clone
Tag: Myc-DDK
Symbol: KLRG1
Synonyms: 2F1; CLEC15A; MAFA; MAFA-2F1; MAFA-L; MAFA-LIKE
Mammalian Cell Selection: Neomycin
Vector: pCMV6-Entry (PS100001)
E. coli Selection: Kanamycin (25 ug/mL)
ORF Nucleotide Sequence: >RC219705 representing NM_005810
 Red=Cloning site Blue=ORF Green=Tags(s)

TTTTGTAATACGACTCACTATAGGGCGGCCGGAATTCGTCGACTGGATCCGGTACCGAGGAGATCTGCC
 GCC**CGATCGCC**

ATGACTGACAGTGTATTATTTATCCATGTTAGAGTTGCCTACGGCAACCAAGCCAGAATGACTATGGAC
 CACAGCAAAAATCTTCTCTTCCAGGCCTTCTTGTCTTGCCCTGTGGCAATAGCTTTGGGGCTTCTGAC
 TGCAGTCTTCTGAGTGTCTGTATACCAGTGGATCCTGTGCCAGGGCTCCAATACTCCACTTGTGCC
 AGCTGTCTAGCTGCCAGACCCTGGATGAAATATGGTAACCATTGTTATTATTTCTCAGTGGAGGAAA
 AGGACTGGAATTCTAGTCTGGAATCTGCCTAGCCAGAGACTCACACCTCCTTGTGATAACGGACAATCA
 GGAATGAGCCTGCTCCAAGTTTCTCCTCAGTGGCCCTTTGCTGGATTGGTCTGAGGAACAATTCTGGC
 TGGAGGTGGGAAGATGGATCACCTCTAAACTTCTCAAGGATTTCTTAATAGCTTTGTGACAGCATGCG
 GTGCCATCAACAAAAATGGTCTTCAAGCCTCAAGCTGTGAAGTTCCTTTACACTGGGTGTGAAGAAGGT
 CAGACTT

ACGCGTACGCGGCCGCTCGAGCAGAAACTCATCTCAGAAGAGGATCTGGCAGCAATGATATCCTGGATT
 ACAAGGATGACGACGATAAGGTTTAA

Protein Sequence: >RC219705 representing NM_005810
 Red=Cloning site Green=Tags(s)

MTDSVIYSMLLPTATQAQNDYGPQQKSSSSRSPSCSCLVAIALGLLTAVLLSVLLYQWILCQGSNYSTCA
 SCPSPDRWMKYGNHCYFVSVEEKDWNSSLEFCLARDSHLLVITDNQEMSLQVFLSEAFQWIGLRNNSG
 WRWEDGSPLNFSRISNSFVQTCGAINKNGLQASSCEVPLHWVCKKVR

TRTRPLEQKLISEEDLAANDILDYKDDDDKV



[View online »](#)

Chromatograms: https://cdn.origene.com/chromatograms/mk8008_d06.zip

Restriction Sites: SgfI-MluI

Cloning Scheme:



ACCN: NM_005810

ORF Size: 567 bp

OTI Disclaimer: The molecular sequence of this clone aligns with the gene accession number as a point of reference only. However, individual transcript sequences of the same gene can differ through naturally occurring variations (e.g. polymorphisms), each with its own valid existence. This clone is substantially in agreement with the reference, but a complete review of all prevailing variants is recommended prior to use. [More info](#)

OTI Annotation: This clone was engineered to express the complete ORF with an expression tag. Expression varies depending on the nature of the gene.

Components: The ORF clone is ion-exchange column purified and shipped in a 2D barcoded Matrix tube containing 10ug of transfection-ready, dried plasmid DNA (reconstitute with 100 ul of water).

Reconstitution Method:

1. Centrifuge at 5,000xg for 5min.
2. Carefully open the tube and add 100ul of sterile water to dissolve the DNA.
3. Close the tube and incubate for 10 minutes at room temperature.
4. Briefly vortex the tube and then do a quick spin (less than 5000xg) to concentrate the liquid at the bottom.
5. Store the suspended plasmid at -20°C. The DNA is stable for at least one year from date of shipping when stored at -20°C.

RefSeq: [NM_005810.4](#)

RefSeq Size: 1815 bp

RefSeq ORF: 570 bp

Locus ID: 10219

UniProt ID: [Q96E93](#)

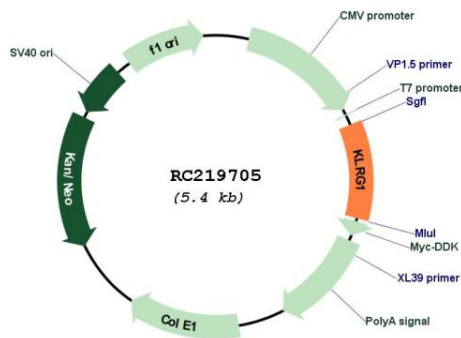
Cytogenetics: 12p13.31

Protein Families: Transmembrane

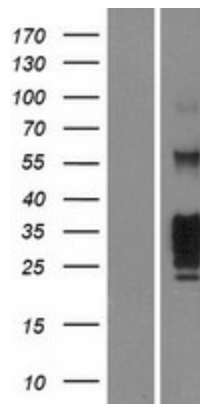
MW: 21 kDa

Gene Summary: Natural killer (NK) cells are lymphocytes that can mediate lysis of certain tumor cells and virus-infected cells without previous activation. They can also regulate specific humoral and cell-mediated immunity. The protein encoded by this gene belongs to the killer cell lectin-like receptor (KLR) family, which is a group of transmembrane proteins preferentially expressed in NK cells. Studies in mice suggested that the expression of this gene may be regulated by MHC class I molecules. [provided by RefSeq, Jun 2016]

Product images:



Circular map for RC219705



Western blot validation of overexpression lysate (Cat# [LY417053]) using anti-DDK antibody (Cat# [TA50011-100]). Left: Cell lysates from untransfected HEK293T cells; Right: Cell lysates from HEK293T cells transfected with RC219705 using transfection reagent MegaTran 2.0 (Cat# [TT210002]).