

## Product datasheet for RC219701

### HES7 (NM\_032580) Human Tagged ORF Clone

#### Product data:

Product Type:	Expression Plasmids
Product Name:	HES7 (NM_032580) Human Tagged ORF Clone
Tag:	Myc-DDK
Symbol:	HES7
Synonyms:	bHLHb37; SCDO4
Mammalian Cell Selection:	Neomycin
Vector:	pCMV6-Entry (PS100001)
E. coli Selection:	Kanamycin (25 ug/mL)
ORF Nucleotide Sequence:	>RC219701 representing NM_032580 Red=Cloning site Blue=ORF Green=Tags(s)

TTTTGTAATACGACTCACTATAGGGCGGCCGGAATTCGTCGACTGGATCCGGTACCGAGGAGATCTGCC  
GCC**CGATCGCC**

ATGGTCACCCGGGATCGAGCTGAGAATAGGGACGGCCCAAGATGCTCAAGCCGCTTGTGGAGAAGCGGC  
GCCGGGACCGCATCAACCGCAGCCTGGAAGAGCTGAGGCTGCTGCTGCTGGAGCGGACCCGGGACCAGAA  
CCTCCGGAACCCGAAGCTGGAGAAAGCGGAGATATTGGAGTTCGCCGTGGGCTACTTGAGGGAGCGAAGC  
CGGGTGGAGCCCCGGGGTTCCCCGGTCCCCAGTCCAGGACGCCGAGGCGCTCGCCAGCTGCTACTTGT  
CCGGTTTCCGCGAGTGCCTGCTTCGCTTGGCGGCCTTCGCGCACGACGCCAGCCCGCCGCCCGCCGCCCCA  
GCTCTTCTCCGCGCTGCACGGCTATCTGCGCCCCAAACCGCCCCGCCCCAAGCCGGTAGATCCGAGGCCCT  
CCAGCGCCCGGCCATCCCTGGACCCCGCCGACCCGCCCCCTTGGCCCTGCGCTGCACCGCCGCCCCCAG  
TGCACCGGGCCACCCTAGCCCGCGCTGCGCATGGTCCCCATCCCTCTGCTCCCCGCGCGCCGGGATTC  
TGGCGCGCCGGCGCCCCCTACCGGACTGCTGCCGCCACCGCCCTCACAGACAAGACGGGGCGCCC  
AAGCCCCGCTGCCCGCCGCCGCTTCTGGAGACCTTGGCCC

**ACGCGT**ACGCGGCGCTCGAGCAGAACTCATCTCAGAAGAGGATCTGGCAGCAATGATATCCTGGATT  
ACAAGGATGACGACGATAAGGTTTAA



[View online »](#)

**Protein Sequence:** >RC219701 representing NM\_032580  
Red=Cloning site Green=Tags(s)

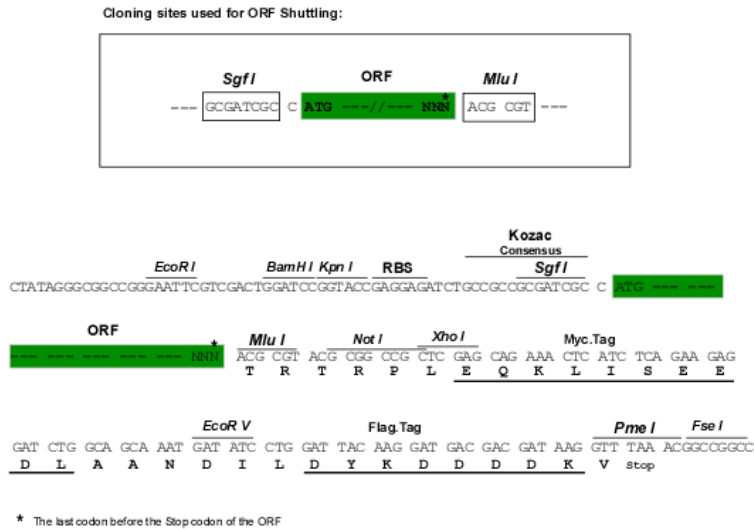
MVTRDRAENRDGPKMLKPLVEKRRRDRINRSLEELRLLLLERTRDQNLRNPKLEKAEILEFAVGYLRERS  
 RVEPPGVPRSPVQDAEALASCYLSGFRECLLRLLAAFAHDASPAARAQLFSALHGYLRPKPPRPKPVDRP  
 PAPPRLDPAAPALGPALHQRPPVHQGHPSPRCAWSPSLCSPRAGDSGAPAPLTGLLPPPPPPHRQDGAP  
 KAPLPPPPAFWRPWP

TRTRPLEQKLISEEDLAANDILDYKDDDDKV

**Chromatograms:** [https://cdn.origene.com/chromatograms/mg3111\\_h01.zip](https://cdn.origene.com/chromatograms/mg3111_h01.zip)

**Restriction Sites:** SgfI-MluI

**Cloning Scheme:**



**ACCN:** NM\_032580

**ORF Size:** 675 bp

**OTI Disclaimer:** The molecular sequence of this clone aligns with the gene accession number as a point of reference only. However, individual transcript sequences of the same gene can differ through naturally occurring variations (e.g. polymorphisms), each with its own valid existence. This clone is substantially in agreement with the reference, but a complete review of all prevailing variants is recommended prior to use. [More info](#)

**OTI Annotation:** This clone was engineered to express the complete ORF with an expression tag. Expression varies depending on the nature of the gene.

**Components:** The ORF clone is ion-exchange column purified and shipped in a 2D barcoded Matrix tube containing 10ug of transfection-ready, dried plasmid DNA (reconstitute with 100 ul of water).

**Reconstitution Method:**

1. Centrifuge at 5,000xg for 5min.
2. Carefully open the tube and add 100ul of sterile water to dissolve the DNA.
3. Close the tube and incubate for 10 minutes at room temperature.
4. Briefly vortex the tube and then do a quick spin (less than 5000xg) to concentrate the liquid at the bottom.
5. Store the suspended plasmid at -20°C. The DNA is stable for at least one year from date of shipping when stored at -20°C.

**RefSeq:** [NM\\_032580.4](#)

**RefSeq Size:** 678 bp

**RefSeq ORF:** 678 bp

**Locus ID:** 84667

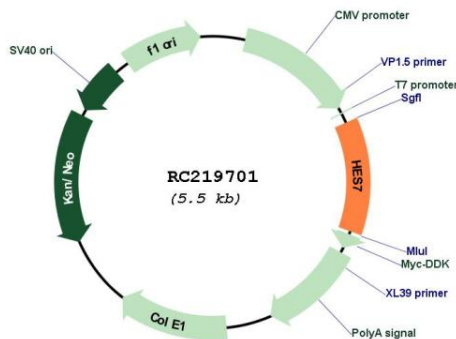
**UniProt ID:** [F8VPC9](#)

**Cytogenetics:** 17p13.1

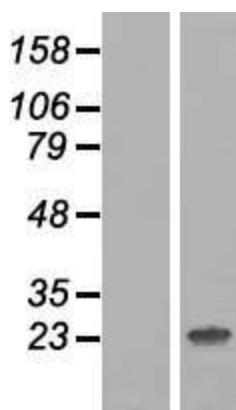
**MW:** 24.7 kDa

**Gene Summary:** This gene encodes a member of the hairy and enhancer of split family of bHLH transcription factors. The mouse ortholog of this gene is regulated by Notch signaling. The protein functions as a transcriptional repressor, and is implicated in correct patterning of the axial skeleton. A mutation in this gene has been shown to result in spondylocostal dysostosis. Multiple transcript variants encoding different isoforms have been found for this gene. [provided by RefSeq, Sep 2009]

**Product images:**



Circular map for RC219701



Western blot validation of overexpression lysate (Cat# [LY410035]) using anti-DDK antibody (Cat# [TA50011-100]). Left: Cell lysates from untransfected HEK293T cells; Right: Cell lysates from HEK293T cells transfected with RC219701 using transfection reagent MegaTran 2.0 (Cat# [TT210002]).