

Product datasheet for RC219696

TMEM26 (NM_178505) Human Tagged ORF Clone

Product data:

Product Type:	Expression Plasmids
Product Name:	TMEM26 (NM_178505) Human Tagged ORF Clone
Tag:	Myc-DDK
Symbol:	TMEM26
Mammalian Cell Selection:	Neomycin
Vector:	pCMV6-Entry (PS100001)
E. coli Selection:	Kanamycin (25 ug/mL)
ORF Nucleotide Sequence:	>RC219696 representing NM_178505 Red=Cloning site Blue=ORF Green=Tags(s)

TTTTGTAATACGACTCACTATAGGGCGGCCGGAATTCGTCGACTGGATCCGGTACCGAGGAGATCTGCC
GCC**CGATCGCC**

ATGGAGGGACTGGTCTTCCTAACGCCCTGGCCACTCGGTTGCTGTTCTGCTGCACTCGCTGGTCGGGG
TCTGGCGAGTGACCGAGGTGAAGAAGGAGCCGCGTACTGGCTGCTTGCCTGCTCAACCTCTTGCTCTT
CCTGGAGACTGCGCTCACCTCAAGTTCAGCGCGGCAGAGGCTACAAATGGTTTTACCAGCCATATTT
TTATATCTGATTAGCATCGTCCATCATTATGGCTTCTGAATTGCACCATGAGACCCAGTATTGCAGTA
TCCAGGCTGAAGGAACATCACAGAATACCAGCAGAAAAGAAGACTTCAATCAAACATTGACATCCAATGA
ACAAACCAGTAGAGCTGATGATCTCATTGAGACGCCAAAGTTTTGTGAATAACTTATCTACAGTATGT
GAGAAAGTTTGGACATTGGGACTCCATCAGACATTCTGTTAATGCTAATAATTGGAAGATGGCTTCTAC
CCATTGGAGGCGGGATCACTCGAGATCAACTCTCTCAACTTCTTCTTATGTTTGTGGGGACAGCGCTGA
CATACTGGAATTCACAAGTGAGACCCTAGAAGAACAAAATGTGAGGAATAGTCTGCACTAGTCTATGCC
ATCCTTGTATATGGACTTGGAGCATGCTGCAGTTTCCACTTGACCTGGCAGTACAGAACGTTGTGTGCC
CTGTGTCCGTGACAGAGAGGGGATTCCCCAGCCTGTTCTTTGCCAGTACAGTCCGATCTGTGGAACAT
CGAATCAGCGTCTTCATAACAAGATGGCCCTTCTTGTGCGTGCCTCATACTGATGACCTATTTCAA
GTGATCAATCAGATGCTGGTGTCTTTGCCGCAAGAACTTCTCGTGGTGGTGTGCAACTCTACCGCT
TGGTGGTGTGGCATTGGCAGTCCGTGCTTCGTTGAGAAGTCACTCAGAAGGCCTGAAAGGAGAACATGG
TTGCCGGGCACAGACCTCTGAGAGTGGGCCCTCTCAGCGGGACTGGCAGAACGAGTCTAAGGAGGGCCTG
GCTATTCTTTGCGGGGCTCCCCAGTCACTCCGACGACTCCCACCACACCCCT

ACGCGTACGCGGCCGCTCGAGCAGAACTCATCTCAGAAGAGGATCTGGCAGCAAATGATATCCTGGATT
ACAAGGATGACGACGATAAGGTTTAA



[View online »](#)

Protein Sequence: >RC219696 representing NM_178505
Red=Cloning site Green=Tags(s)

```
MEGLVFLNALATRLFLLLHSLVGVWRVTEVKKEPRYWLLALLNLLL FLETALTLKFKRGRGYKWFSPAIF
LYLISIVPSLWLELHHETQYCSIQAEGTSQNTSRKEDFNQTLTSNEQTSRADDLIETAKVFVNNLSTVC
EKVWTLGLHQTFLMLIIGRWLLPIGGITRDQLSOLLMFVGTAAIDILEFTSETLEEQNVRNNSPALVYA
ILVIWTWSMLQFPLDLAVQNVVCPVSVTERGFPSLFFCQYSADLWNIGISVFIQDGPFLVVRLILMTYFK
VINQMLVFFAAKNFLVVVLQLYRLVVLALAVRASLRSQSEGLKGEHGCRAQTSESGPSQRDWNESKEGL
AIPLRGSPVTSDDSHHTP
```

TRTRPLEQKLISEEDLAANDILDYKDDDDKV

Chromatograms: https://cdn.origene.com/chromatograms/mk8013_d01.zip

Restriction Sites: SgfI-MluI

Cloning Scheme:

Cloning sites used for ORF Shuttling:



* The last codon before the Stop codon of the ORF

ACCN: NM_178505

ORF Size: 1104 bp

OTI Disclaimer: The molecular sequence of this clone aligns with the gene accession number as a point of reference only. However, individual transcript sequences of the same gene can differ through naturally occurring variations (e.g. polymorphisms), each with its own valid existence. This clone is substantially in agreement with the reference, but a complete review of all prevailing variants is recommended prior to use. [More info](#)

OTI Annotation: This clone was engineered to express the complete ORF with an expression tag. Expression varies depending on the nature of the gene.

Components: The ORF clone is ion-exchange column purified and shipped in a 2D barcoded Matrix tube containing 10ug of transfection-ready, dried plasmid DNA (reconstitute with 100 ul of water).

Reconstitution Method:

1. Centrifuge at 5,000xg for 5min.
2. Carefully open the tube and add 100ul of sterile water to dissolve the DNA.
3. Close the tube and incubate for 10 minutes at room temperature.
4. Briefly vortex the tube and then do a quick spin (less than 5000xg) to concentrate the liquid at the bottom.
5. Store the suspended plasmid at -20°C. The DNA is stable for at least one year from date of shipping when stored at -20°C.

RefSeq: [NM_178505.5](#), [NP_848600.2](#)

RefSeq Size: 5170 bp

RefSeq ORF: 1107 bp

Locus ID: 219623

UniProt ID: [Q6ZUK4](#)

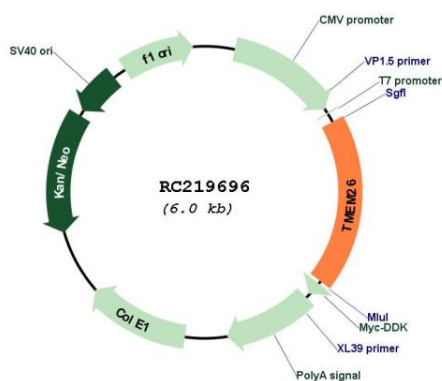
Cytogenetics: 10q21.2

Protein Families: Transmembrane

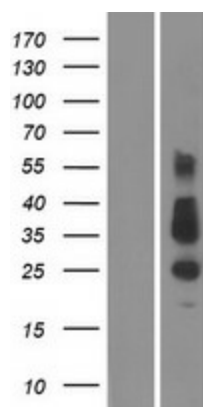
MW: 41.5 kDa

Gene Summary: This gene encodes a protein containing multiple transmembrane helices. It is a selective surface protein marker of brite/beige adipocytes, which may coexist with classical brown adipocytes in brown adipose tissue. Alternative splicing of this gene results in multiple transcript variants. [provided by RefSeq, Dec 2015]

Product images:



Circular map for RC219696



Western blot validation of overexpression lysate (Cat# [LY405895]) using anti-DDK antibody (Cat# [TA50011-100]). Left: Cell lysates from untransfected HEK293T cells; Right: Cell lysates from HEK293T cells transfected with RC219696 using transfection reagent MegaTran 2.0 (Cat# [TT210002]).