

## Product datasheet for **RC219694**

### **FSTL4 (NM\_015082) Human Tagged ORF Clone**

#### **Product data:**

Product Type:	Expression Plasmids
Product Name:	FSTL4 (NM_015082) Human Tagged ORF Clone
Tag:	Myc-DDK
Symbol:	FSTL4
Mammalian Cell Selection:	Neomycin
Vector:	pCMV6-Entry (PS100001)
E. coli Selection:	Kanamycin (25 ug/mL)



[View online »](#)

**ORF Nucleotide Sequence:**

>RC219694 representing NM\_015082  
 Red=Cloning site Blue=ORF Green=Tags(s)

TTTTGTAATACGACTCACTATAGGGCGGCCGGGAATTCGTCGACTGGATCCGGTACCGAGGAGATCTGCC  
 GCC**CGGATCGCC**

ATGAAACCAGGAGGCTTTTGGCTGCATCTCACACTGCTCGGAGCCTCCCTGCCGGCTGCGCTGGGATGGA  
 TGGACCCAGGAACCAGCAGAGGCCCGGATGTGGGTGTGGGGAGTCACAGGCAGAGGAGCCAGAAAGCTT  
 TGAAGTACAAGAAGAGAAGGGCTTTCCAGCCACAACGAGCTGCTGGCCTCCTGCCGGAAGAAGTTCTGC  
 AGCCGAGGGAGCCGGTGCCTGCTCAGCAGGAAGACAGGGGAGCCGAATGCCAGTGCCTGGAGGCATGCA  
 GGCCAGCTACGTGCCTGTGTGGCTCTGATGGGAGTTTTATGAAAACCACTGTAAGCTCCACCGTGC  
 TGCTTGCTCCTGGGAAAGAGGATCACCGTATCCACAGCAAGGACTGTTTCTCAAAGGTGACACGTGC  
 ACCATGGCCGGCTACGCCCGCTGAAGAATGTCTTCTGGCACTCCAGACCCGTCTGCAGCCACTCCAAG  
 AAGGAGACAGCAGACAAGACCCTGCCTCCAGAAGCGCCTCCTGGTGAATCTCTGTTCCAGGACTTAGA  
 TGCAGATGGCAATGGCCACTCAGCAGTCCGAAGTGGCTCAGCATGTGCTGAAGAAGCAGGACCTGGAT  
 GAAGACTTACTTGGTTGCTCACCAGGTGACCTCCTCCGATTTGACGATTACAACAGTGACAGCTCCCTGA  
 CCCTCCGCGAGTTCTACATGGCCTTCCAAGTGGTTCAGCTCAGCCTCGCCCCGAGGACAGGGTCAAGT  
 GACCACAGTGACCGTGGGGCTGAGCACAGTGTGACCTGCGCCGTCCATGGAGACCTGAGGCCACCAATC  
 ATCTGGAAGCGCAACGGGCTCACCTGAACTTCTGGACTTGAAGACATCAATGACTTTGGAGAGGATG  
 ATTCCTGTACATCACCAGGTGACCACCATCCACATGGGCAATTACACCTGCCATGCTTCCGGCCACGA  
 GCAGCTGTTCCAGACCCAGTCTGCAGGTGAATGTGCCGCCAGTATCCGTGTCTATCCAGAGAGCCAG  
 GCACAGGAGCCTGGAGTGGCAGCCAGCCTAAGATGCCATGCTGAGGGCATTCCCATGCCAGAATCACTT  
 GGCTGAAAAACGGCGTGGATGTCTCAACTCAGATGTCCAACAGCTCTCCCTTTTAGCCAAATGGGAGCGA  
 ACTCCACATCAGCAGTGTTCGGTATGAAGACACAGGGGCATACACCTGCATTGCCAAAAATGAAGTGGGT  
 GTGGATGAAGATATCTCCTCGCTTTCATTGAAGACTCAGCTAGAAAGACCCCTTGCAAACATCCTGTGGC  
 GAGAGGAAGCCCTCAGCGTGGGAAACATGTTCTATGTCTTCTCCGACGACGGTATCATCGTCATCCATCC  
 TGTGGACTGTGAGATCCAGAGGCACCTCAAACCCACGAAAAGATTTTTCATGAGCTATGAAGAAATCTGT  
 CCTCAAAGAGAAAAAATGCAACCCAGCCCTGCCAGTGGGTATCTGCAGTCAATGTCCGGAACCGGTACA  
 TCTATGTGGCCAGCCAGCACTGAGCAGAGTCTTGTGGTGCACATCCAAGCCAGAAAGTCTACAGTC  
 CATAGGTGTGGACCTCTGCCGGTAAGCTGTCTATGACAAGTACATGACCAAGTGTGGGTCTGAGC  
 TGGGGGAGCTGCACAAGTCCCACCAAGTCTCCAGGTGATCACAGAAGCCAGCACCGGCCAGAGCCAGC  
 ACCTCATCCGCACACCCTTGCAGGAGTGGATGATTTCTTATTCCCCCAACAAACCTCATCATCAACCA  
 CATCAGGTTTGGCTTCATCTTCAACAAGTCTGATCCTGCAGTCCACAAGGTGGACCTGGAACAATGATG  
 CCCCTCAAGACCATCGGCCTGCACCACCATGGCTGCGTGCCCCAGGCCATGGCACACACCACCTGGGCG  
 GCTACTTCTTATCCAGTGCCGACAGGACAGCCCCGCCTCTGCTGCCGACAGCTGCTCGTTGACAGTGT  
 CACAGACTCTGTGCTTGGCCCCAATGGTGTGTAACAGGCACCCACACATCCCCGACGGGCGCTTC  
 ATAGTCAGTGTGCAGCTGACAGCCCCTGGCTGCACGTGCAGGAGATCACAGTGGGGGCGAGATCCAGA  
 CCCTGTATGACCTGCAAATAAACTCGGGCATCTCAGACTTGGCCTTCCAGCGTCTCTACTGAAAGCAA  
 TCAATAACAATCTACGCGGCTCTGCACACGGAGCCGGACCTGCTGTTTCTGGAGCTGCCACGGGGAAG  
 GTGGGCATGCTGAAGAACTTAAAGGAGCCACCCGAGGGCCAGCTCAGCCCTGGGGGGTACCCACAGAA  
 TCATGAGGGACAGTGGGCTGTTTGGACAGTACCTCCTCACACCAGCCGAGAGTCACTGTTCTCATCAA  
 TGGGAGACAAAACAGCTGCGGTGTGAGGTGTGAGGTATAAAGGGGGGACCACAGTGGTGTGGTGGGT  
 GAGGTA

**ACGCGT**ACGCGGCCGCTCGAGCAGAAACTCATCTCAGAAGAGGATCTGGCAGCAATGATATCCTGGATT  
 ACAAGGATGACGACGATAAGGTTTAA

**Protein Sequence:** >RC219694 representing NM\_015082  
Red=Cloning site Green=Tags(s)

MKPGGFWLHLTLLGASLPAALGWMDPGTSRGPDVGVGESQAEPRSFVTRREGLSSHNELLASCGKKFC  
SRGSRCVLSRKTGEPECQCLEACRPSYVPVCGSDGRFYENHCKLHRAACLLGKRITVIHSKDCFLKGDTC  
TMAGYARLKNVLLALQTRLQPLQEGDSRQDPASQKRLLEVSLFRDLADGNGHLSSELAQHVLKKQDLD  
EDLLGCSPGDLLRFDDYNSDSSLTLREFYMAFQVVQLSLAPEDRVSVTTTVTGLSTVLTCAVHGDLRPPI  
IWKRNGLTLNFLDLEDINDFGEDDSLYITKVTTIHMGNVTCHASGHEQLFQTHVLQVNVPPVIRVYVESQ  
AQEPGVAASLRCHAEGIPMPRITWLKNGVDVSTQMSKQLSLLANGSELHISSVRYEDTGAYTCIAKNEVG  
VDEDISSLFIEDSARKTLANILWREGLSVGNMFYVFSDDGIIVIHPVDCEIQRHLKPTKIFMSYEEIC  
PQREKNAQPCQWVSAVNVNRNYIYVAQPALSRVLVVDIQAQKVLQSIGVDPLPAKLSYDKSHDQVWVLS  
WGDVHKSRLSLQVITEASTGQSQHLIRTPFAGVDDFFIPPTNLIINHIFGFIFNKSDPAVHKVDLETMM  
PLKTIGLHHHGCVQAMAHTLGGYFFIQCRQDSPASAAQRLVDSVTDVSLGPNGDVTGTPHTSPDGRF  
IVSAAADSPWLHVQEITVRGEIQTLYDLQINSGISDLAFQRSFTESNQYNIYAALHTEPDLLFLELSTGK  
VGMLKNLKEPPAGPAQPWGGTHRIMRDSGLFGQYLLTPARESLFLINGRQNTLRCEVSGIKGGTTVVWVG  
EV

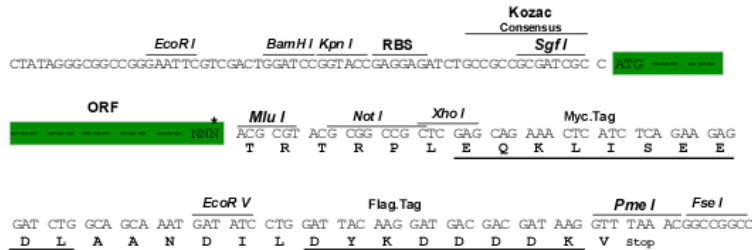
TRTRPLEQKLISEEDLAANDILDYKDDDDKV

**Chromatograms:** [https://cdn.origene.com/chromatograms/mk8018\\_h09.zip](https://cdn.origene.com/chromatograms/mk8018_h09.zip)

**Restriction Sites:** SgfI-MluI

**Cloning Scheme:**

Cloning sites used for ORF Shuttling:



\* The last codon before the Stop codon of the ORF

**ACCN:** NM\_015082

**ORF Size:** 2526 bp

**OTI Disclaimer:** The molecular sequence of this clone aligns with the gene accession number as a point of reference only. However, individual transcript sequences of the same gene can differ through naturally occurring variations (e.g. polymorphisms), each with its own valid existence. This clone is substantially in agreement with the reference, but a complete review of all prevailing variants is recommended prior to use. [More info](#)

**OTI Annotation:** This clone was engineered to express the complete ORF with an expression tag. Expression varies depending on the nature of the gene.

**Components:** The ORF clone is ion-exchange column purified and shipped in a 2D barcoded Matrix tube containing 10ug of transfection-ready, dried plasmid DNA (reconstitute with 100 ul of water).

- Reconstitution Method:**
1. Centrifuge at 5,000xg for 5min.
  2. Carefully open the tube and add 100ul of sterile water to dissolve the DNA.
  3. Close the tube and incubate for 10 minutes at room temperature.
  4. Briefly vortex the tube and then do a quick spin (less than 5000xg) to concentrate the liquid at the bottom.
  5. Store the suspended plasmid at -20°C. The DNA is stable for at least one year from date of shipping when stored at -20°C.

**RefSeq:** [NM\\_015082.2](#)

**RefSeq Size:** 5382 bp

**RefSeq ORF:** 2529 bp

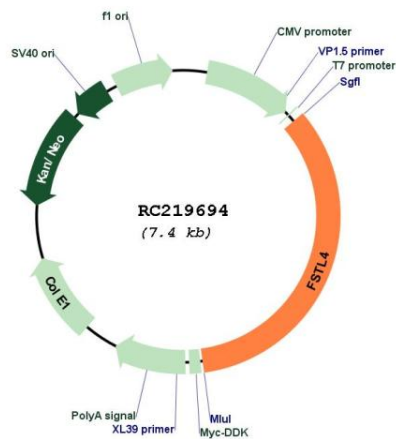
**Locus ID:** 23105

**UniProt ID:** [Q6MZW2](#)

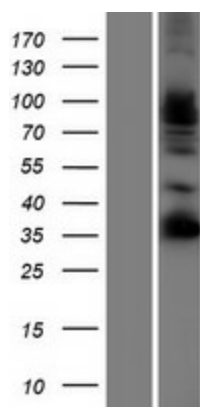
**Cytogenetics:** 5q31.1

**MW:** 92.9 kDa

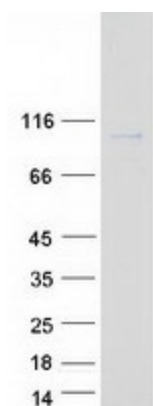
**Product images:**



Circular map for RC219694



Western blot validation of overexpression lysate (Cat# [LY414819]) using anti-DDK antibody (Cat# [TA50011-100]). Left: Cell lysates from untransfected HEK293T cells; Right: Cell lysates from HEK293T cells transfected with RC219694 using transfection reagent MegaTran 2.0 (Cat# [TT210002]).



Coomassie blue staining of purified FSTL4 protein (Cat# [TP319694]). The protein was produced from HEK293T cells transfected with FSTL4 cDNA clone (Cat# RC219694) using MegaTran 2.0 (Cat# [TT210002]).