

Product datasheet for RC219692

TPD52L2 (NM_199359) Human Tagged ORF Clone

Product data:

Product Type: Expression Plasmids
Product Name: TPD52L2 (NM_199359) Human Tagged ORF Clone
Tag: Myc-DDK
Symbol: TPD52L2
Synonyms: D54; TPD54
Mammalian Cell Selection: Neomycin
Vector: pCMV6-Entry (PS100001)
E. coli Selection: Kanamycin (25 ug/mL)
ORF Nucleotide Sequence: >RC219692 representing NM_199359
Red=Cloning site Blue=ORF Green=Tags(s)

TTTTGTAATACGACTCACTATAGGGCGGCCGGAATTCGTCGACTGGATCCGGTACCGAGGAGATCTGCC
GCC**CGGATCGCC**

ATGGACTCCGCCGCCAAGATATCAACCTGAATTCTCCTAACAAAGGTCTGCTGTCTGACTCCATGACGG
ATGTTCTGTGACACAGGTGTGGCTGCCCGACTCCTGCTGTTGAGGGTCTGACAGAGGCTGAGGAGGA
GGAGCTCAGGGCTGAGCTTACCAAGGTGGAAGAGGAAATTGCTACTCTGCGCCAGGTCTGGCAGCCAAG
GAGAGGACTGTGGAGAGCTCAAGAGGAGGCTGGGCTCTCCACCCTGGGGAGCTGAAACAGAACCTGT
CCAGGAGCTGGCATGACGTGCAGGTCTCTAGCGCCTACAAGAAGACTCAGGAACTCTTTCACAGGCAGG
ACAGAAGACTTCAGCTGCCCTGTCCACAGTGGGCTCTGCCATCAGCAGGAAGCTTGAGACATGAGGAAC
TCTGCGACCTTCAAGTCGTTTGAGGACCGAGTTGGGACCATAAAGTCTAAGGTTGTGGGTGACAGAGAGA
ACGGCAGTGACAACCTCCCTTCTCAGCGGGGAGTGGTGACAAGCCCCTGTCCGATCCCGCACCTTTCT

ACGCGTACGCGGCCGCTCGAGCAGAACTCATCTCAGAAGAGGATCTGGCAGCAAATGATATCCTGGATT
ACAAGGATGACGACGATAAGGTTTAA

Protein Sequence: >RC219692 representing NM_199359
Red=Cloning site Green=Tags(s)

MDSAGQDINLNSPNKGLLSDSMTDVPVDTGVAARTPAVEGLTEAEEEEELRAELTKVEEEIVTLRQVLA
ERHCGELKRRLLSTLGLKQNLRSRSHDVQVSSAYKKTQETLSQAGQKTSAAALSTVGSASIRKLGDMRN
SATFKSFEDRVGTIKSKVVDRENGSDNLPSSAGSGDKPLSDPAPF

TRTRPLEQKLISEEDLAANDILDYKDDDDKV

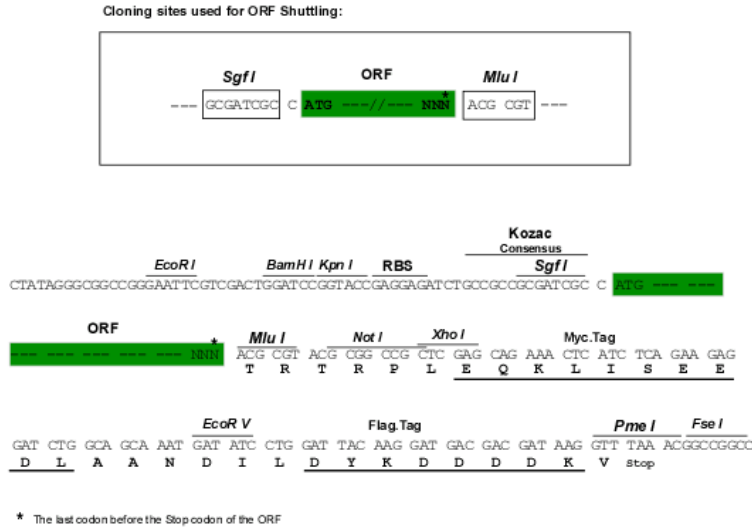
Chromatograms: https://cdn.origene.com/chromatograms/mk6681_g08.zip



[View online »](#)

Restriction Sites: SgfI-MluI

Cloning Scheme:



ACCN: NM_199359

ORF Size: 559 bp

OTI Disclaimer: The molecular sequence of this clone aligns with the gene accession number as a point of reference only. However, individual transcript sequences of the same gene can differ through naturally occurring variations (e.g. polymorphisms), each with its own valid existence. This clone is substantially in agreement with the reference, but a complete review of all prevailing variants is recommended prior to use. [More info](#)

OTI Annotation: This clone was engineered to express the complete ORF with an expression tag. Expression varies depending on the nature of the gene.

Components: The ORF clone is ion-exchange column purified and shipped in a 2D barcoded Matrix tube containing 10ug of transfection-ready, dried plasmid DNA (reconstitute with 100 ul of water).

Reconstitution Method:

1. Centrifuge at 5,000xg for 5min.
2. Carefully open the tube and add 100ul of sterile water to dissolve the DNA.
3. Close the tube and incubate for 10 minutes at room temperature.
4. Briefly vortex the tube and then do a quick spin (less than 5000xg) to concentrate the liquid at the bottom.
5. Store the suspended plasmid at -20°C. The DNA is stable for at least one year from date of shipping when stored at -20°C.

RefSeq: [NM_199359.3](#)

RefSeq Size: 2297 bp

RefSeq ORF: 561 bp

Locus ID: 7165

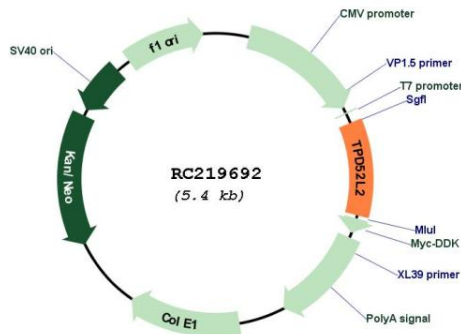
Cytogenetics: 20q13.33

MW: 19.7 kDa

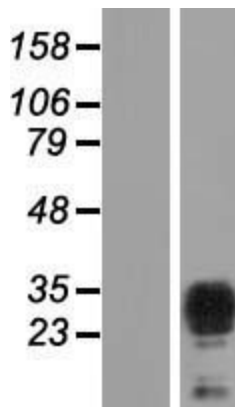
Gene Summary:

This gene encodes a member of the tumor protein D52-like family. These proteins are characterized by an N-terminal coiled-coil motif that is used to form homo- and heteromeric complexes with other tumor protein D52-like proteins. Expression of this gene may be a marker for breast cancer and acute lymphoblastic leukemia. Alternatively spliced transcript variants encoding multiple isoforms have been observed for this gene, and a pseudogene of this gene is located on the long arm of chromosome 12. [provided by RefSeq, Aug 2011]

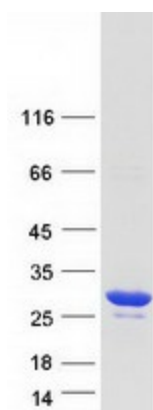
Product images:



Circular map for RC219692



Western blot validation of overexpression lysate (Cat# [LY404541]) using anti-DDK antibody (Cat# [TA50011-100]). Left: Cell lysates from untransfected HEK293T cells; Right: Cell lysates from HEK293T cells transfected with RC219692 using transfection reagent MegaTran 2.0 (Cat# [TT210002]).



Coomassie blue staining of purified TPD52L2 protein (Cat# [TP319692]). The protein was produced from HEK293T cells transfected with TPD52L2 cDNA clone (Cat# RC219692) using MegaTran 2.0 (Cat# [TT210002]).