

## Product datasheet for **RC219689**

### Galectin 10 (CLC) (NM\_001828) Human Tagged ORF Clone

#### Product data:

**Product Type:** Expression Plasmids  
**Product Name:** Galectin 10 (CLC) (NM\_001828) Human Tagged ORF Clone  
**Tag:** Myc-DDK  
**Symbol:** Galectin 10  
**Synonyms:** Gal-10; GAL10; LGALS10; LGALS10A; LPPL\_HUMAN  
**Mammalian Cell Selection:** Neomycin  
**Vector:** pCMV6-Entry (PS100001)  
**E. coli Selection:** Kanamycin (25 ug/mL)  
**ORF Nucleotide Sequence:** >RC219689 representing NM\_001828  
**Red=Cloning site Blue=ORF Green=Tags(s)**

TTTTGTAATACGACTCACTATAGGGCGGCCGGAATTCGTCGACTGGATCCGGTACCGAGGAGATCTGCC  
GCC**CGGATCGCC**

ATGTCCCTGCTACCCGTGCCATACACAGAGGCTGCCTCTTTGTCTACTGGTTCTACTGTGACAATCAAAG  
GGCGACCACTGTCTGTTTCTTGAATGAACCATATCTGCAGGTGGATTCCACACTGAGATGAAGGAGGA  
ATCAGACATTGTCTTCCATTTCCAAGTGTGCTTTGGTCGTCGTGGTCATGAACAGCCGTGAGTATGGG  
GCCTGGAAGCAGCAGGTGAATCCAAGAACATGCCCTTTCAGGATGGCCAAGAATTTGAACTGAGCATCT  
CAGTGCTGCCAGATAAGTACCAGGTAATGGTCAATGGCCAATCCTTTACACCTTTGACCATAGAATCAA  
GCCTGAGGCTGTGAAGATGGTGAAGTGTGGAGAGATATCTCCCTGACCAAATTTAATGTCAGCTATTTA  
AAGAGA

**ACGCGT**ACGCGGCCGCTCGAGCAGAACTCATCTCAGAAGAGGATCTGGCAGCAAATGATATCCTGGATT  
ACAAGGATGACGACGATAAGGTTTAA

**Protein Sequence:** >RC219689 representing NM\_001828  
**Red=Cloning site Green=Tags(s)**  
MSLLPVPYTEAASLSTGSTVTIKRPLVCFLEPYLQVDFHTEMKEESDIVFHFQVCFGRRVVMNSREYG  
AWKQQVESKNMPFQDQGEFELISVLPDKYQVMVNGQSSYTFDHRİKPEAVKMQVWRDİSLTKFNVSYL  
KR

**TRTRPLEQKLI**SEEDLAANDILDYKDDDDKV

**Chromatograms:** [https://cdn.origene.com/chromatograms/mk6049\\_d02.zip](https://cdn.origene.com/chromatograms/mk6049_d02.zip)



[View online >](#)

**Restriction Sites:** SgfI-MluI

**Cloning Scheme:**



**ACCN:** NM\_001828

**ORF Size:** 426 bp

**OTI Disclaimer:** The molecular sequence of this clone aligns with the gene accession number as a point of reference only. However, individual transcript sequences of the same gene can differ through naturally occurring variations (e.g. polymorphisms), each with its own valid existence. This clone is substantially in agreement with the reference, but a complete review of all prevailing variants is recommended prior to use. [More info](#)

**OTI Annotation:** This clone was engineered to express the complete ORF with an expression tag. Expression varies depending on the nature of the gene.

**Components:** The ORF clone is ion-exchange column purified and shipped in a 2D barcoded Matrix tube containing 10ug of transfection-ready, dried plasmid DNA (reconstitute with 100 ul of water).

**Reconstitution Method:**

1. Centrifuge at 5,000xg for 5min.
2. Carefully open the tube and add 100ul of sterile water to dissolve the DNA.
3. Close the tube and incubate for 10 minutes at room temperature.
4. Briefly vortex the tube and then do a quick spin (less than 5000xg) to concentrate the liquid at the bottom.
5. Store the suspended plasmid at -20°C. The DNA is stable for at least one year from date of shipping when stored at -20°C.

**Note:** Plasmids are not sterile. For experiments where strict sterility is required, filtration with 0.22um filter is required.

**RefSeq:** [NM\\_001828.3](#)

**RefSeq Size:** 641 bp

**RefSeq ORF:** 429 bp

Locus ID: 1178  
 UniProt ID: [Q05315](#)

Cytogenetics: 19q13.2

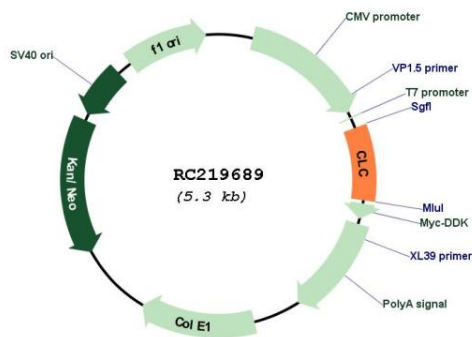
Domains: Gal-bind\_lectin

Protein Families: Secreted Protein

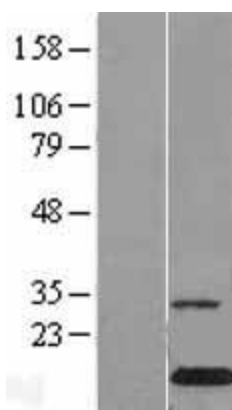
MW: 16.3 kDa

**Gene Summary:** Lysophospholipases are enzymes that act on biological membranes to regulate the multifunctional lysophospholipids. The protein encoded by this gene is a lysophospholipase expressed in eosinophils and basophils. It hydrolyzes lysophosphatidylcholine to glycerophosphocholine and a free fatty acid. This protein may possess carbohydrate or IgE-binding activities. It is both structurally and functionally related to the galectin family of beta-galactoside binding proteins. It may be associated with inflammation and some myeloid leukemias. [provided by RefSeq, Jul 2008]

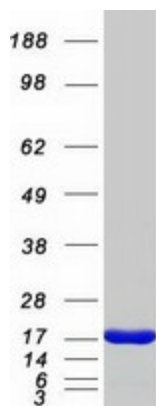
**Product images:**



Circular map for RC219689



Western blot validation of overexpression lysate (Cat# [LY419729]) using anti-DDK antibody (Cat# [TA50011-100]). Left: Cell lysates from untransfected HEK293T cells; Right: Cell lysates from HEK293T cells transfected with RC219689 using transfection reagent MegaTran 2.0 (Cat# [TT210002]).



Coomassie blue staining of purified CLC protein (Cat# [TP319689]). The protein was produced from HEK293T cells transfected with CLC cDNA clone (Cat# RC219689) using MegaTran 2.0 (Cat# [TT210002]).