

Product datasheet for **RC219688**

WNT11 (NM_004626) Human Tagged ORF Clone

Product data:

Product Type:	Expression Plasmids
Product Name:	WNT11 (NM_004626) Human Tagged ORF Clone
Tag:	Myc-DDK
Symbol:	WNT11
Synonyms:	HWNT11
Mammalian Cell Selection:	Neomycin
Vector:	pCMV6-Entry (PS100001)
E. coli Selection:	Kanamycin (25 ug/mL)
ORF Nucleotide Sequence:	>RC219688 representing NM_004626 Red=Cloning site Blue=ORF Green=Tags(s)

TTTTGTAATACGACTCACTATAGGGCGGCCGGAATTCGTCGACTGGATCCGGTACCGAGGAGATCTGCC
GCC**CGATCGC**

ATGAGGGCGGGCCGAGGTCTGCGAGGCGCTGCTCTTCGCCCTGGCGCTCCAGACCGGCGTGTGCTATG
GCATCAAGTGGCTGGCGCTGTCCAAGACACCATCGGCCCTGGCACTGAACCAGACGCAACACTGCAAGCA
GCTGGAGGGTCTGGTGTCTGCACAGGTGCAGCTGTGCCGAGCAACCTGGAGCTCATGCACAGGTGGTG
CACGCCGCCCGGAGGTGATGAAGGCCTGTGCGGGGCTTTGCCGACATGCGCTGGAAGTGTCTCTCCA
TTGAGCTCGCCCCAACTATTTGCTTGACCTGGAGAGAGGGACCCGGGAGTGGCCTTCGTGTATGCGCT
GTGCGGCCGCCCATCAGCCACGCCATCGCCGGGCTGCACCTCCGGCGACCTGCCCGGCTGCTCCTGC
GGCCCCGTCCCAGGTGAGCCACCCGACCCGGGAACCGCTGGGGAGGATGTGCGGACAACCTCAGTACG
GGCTCCTCATGGGGGCCAAGTTTTCCGATGCTCCTATGAAGGTGAAAAAACAGGATCCCAAGCCAATAA
ACTGATGCGTCTACACAACAGTGAAGTGGGGAGACAGGCTCTGCGCGCTCTCTGGAAATGAAGTGAAG
TGCCATGGGGTGTCTGGCTCCTGCTCCATCCGACCTGCTGGAAGGGGCTGCAGGAGTGCAGGATGTGG
CTGCTGACCTCAAGACCCGATACCTGTGCGCCACCAAGGTAGTGACCCGACCCATGGGCACCCGCAAGCA
CCTGGTGCCCAAGGACCTGGATATCCGGCTGTGAAGGACTCGGAACCTGCTATCTGCAGAGCTCACCT
GACTTCTGCATGAAGAATGAGAAGGTGGGCTCCACGGGACACAAGACAGGCAGTGCAACAAGACATCCA
ACGGAAGCGACAGCTGCGACCTTATGTGCTGCGGGCGTGGCTACAACCCCTACACAGACCCGCTGGTCTGA
GCGGTGCCACTGTAAGTACCACTGGTGTGCTACGTACCTGCCGAGGTGTGAGCGTACCGTGGAGCGC
TATGTCTGCAAG

ACGCGTACGCGGCCGCTCGAGCAGAACTCATCTCAGAAGAGGATCTGGCAGCAATGATATCCTGGATT
ACAAGGATGACGACGATAAGGTTTAA



[View online »](#)

Protein Sequence: >RC219688 representing NM_004626
 Red=Cloning site Green=Tags(s)

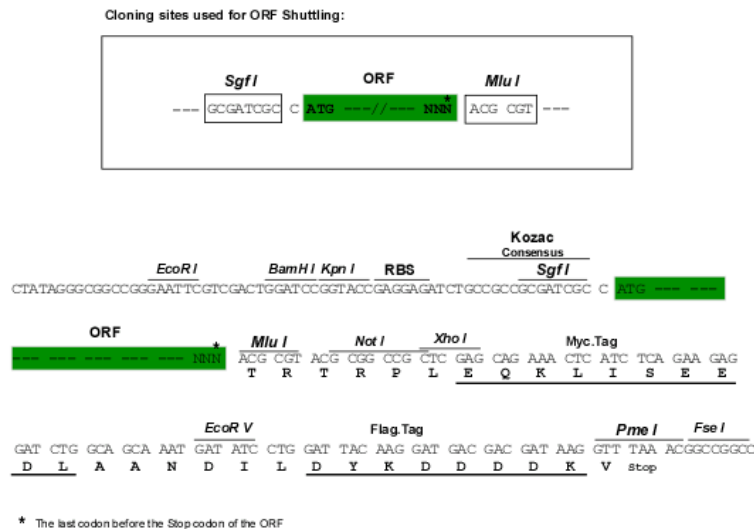
MRARPQVCEALLFALALQTGVCGYIKWLALSKTPSALALNQTQHCKQLEGLVSAQVQLCRSNLELMHTVV
 HAAREVMKACRRAFADMRWNCSSIELAPNYLLDLERGTRESAFVYALSAAIISHAIARACTSGDLPGCSC
 GPVPGPEPPGPNRWGGCADNLSYGLLMGAKFSDAPMKVKKTGSGQANKLMRLHNSEVGRQALRASLEMKCK
 CHGVSGSCSIRTCWKGLQELQDVAADLKTRYLSATKVVHRPMTGRKHLVPKDLDIRPVKDSELVYLQSSP
 DFCMKNEKVGSHGTQDRQCNKTSNGSDSCDLMCCGRGYNPYTDRVVERCHCKYHWCCYVTCRRCERTVER
 YVCK

TRTRPLEQKLISEEDLAANDILDYKDDDDKV

Chromatograms: https://cdn.origene.com/chromatograms/mk6097_d03.zip

Restriction Sites: SgfI-MluI

Cloning Scheme:



ACCN: NM_004626

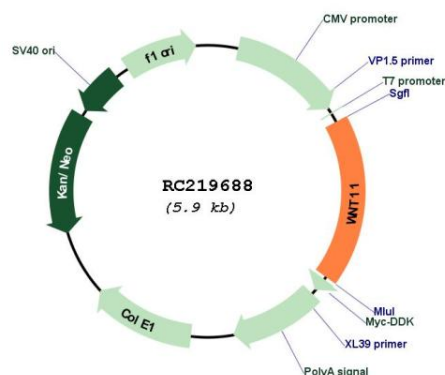
ORF Size: 1062 bp

OTI Disclaimer: Due to the inherent nature of this plasmid, standard methods to replicate additional amounts of DNA in E. coli are highly likely to result in mutations and/or rearrangements. Therefore, OriGene does not guarantee the capability to replicate this plasmid DNA. Additional amounts of DNA can be purchased from OriGene with batch-specific, full-sequence verification at a reduced cost. Please contact our customer care team at custsupport@origene.com or by calling 301.340.3188 option 3 for pricing and delivery.

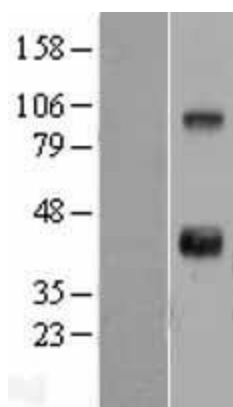
The molecular sequence of this clone aligns with the gene accession number as a point of reference only. However, individual transcript sequences of the same gene can differ through naturally occurring variations (e.g. polymorphisms), each with its own valid existence. This clone is substantially in agreement with the reference, but a complete review of all prevailing variants is recommended prior to use. [More info](#)

OTI Annotation:	This clone was engineered to express the complete ORF with an expression tag. Expression varies depending on the nature of the gene.
Components:	The ORF clone is ion-exchange column purified and shipped in a 2D barcoded Matrix tube containing 10ug of transfection-ready, dried plasmid DNA (reconstitute with 100 ul of water).
Reconstitution Method:	<ol style="list-style-type: none"> 1. Centrifuge at 5,000xg for 5min. 2. Carefully open the tube and add 100ul of sterile water to dissolve the DNA. 3. Close the tube and incubate for 10 minutes at room temperature. 4. Briefly vortex the tube and then do a quick spin (less than 5000xg) to concentrate the liquid at the bottom. 5. Store the suspended plasmid at -20°C. The DNA is stable for at least one year from date of shipping when stored at -20°C.
RefSeq:	<u>NM_004626.3</u>
RefSeq Size:	1927 bp
RefSeq ORF:	1065 bp
Locus ID:	7481
UniProt ID:	<u>O96014</u>
Cytogenetics:	11q13.5
Protein Families:	Secreted Protein, Transmembrane
Protein Pathways:	Basal cell carcinoma, Hedgehog signaling pathway, Melanogenesis, Pathways in cancer, Wnt signaling pathway
MW:	39.18 kDa
Gene Summary:	The WNT gene family consists of structurally related genes which encode secreted signaling proteins. These proteins have been implicated in oncogenesis and in several developmental processes, including regulation of cell fate and patterning during embryogenesis. This gene is a member of the WNT gene family. It encodes a protein which shows 97%, 85%, and 63% amino acid identity with mouse, chicken, and Xenopus Wnt11 protein, respectively. This gene may play roles in the development of skeleton, kidney and lung, and is considered to be a plausible candidate gene for High Bone Mass Syndrome. [provided by RefSeq, Jul 2008]

Product images:



Circular map for RC219688



Western blot validation of overexpression lysate (Cat# [LY401465]) using anti-DDK antibody (Cat# [TA50011-100]). Left: Cell lysates from untransfected HEK293T cells; Right: Cell lysates from HEK293T cells transfected with RC219688 using transfection reagent MegaTran 2.0 (Cat# [TT210002]).