

Product datasheet for RC219685L2

ST6GAL2 (NM_032528) Human Tagged Lenti ORF Clone

Product data:

Product Type:	Expression Plasmids
Product Name:	ST6GAL2 (NM_032528) Human Tagged Lenti ORF Clone
Tag:	mGFP
Symbol:	ST6GAL2
Synonyms:	SIAT2; ST6GalII
Mammalian Cell Selection:	None
Vector:	pLenti-C-mGFP (PS100071)
E. coli Selection:	Chloramphenicol (34 ug/mL)
ORF Nucleotide Sequence:	The ORF insert of this clone is exactly the same as(RC219685).
Restriction Sites:	SgfI-MluI
Cloning Scheme:	

Cloning sites used for ORF Shuttling:



* The last codon before the Stop codon of the ORF.

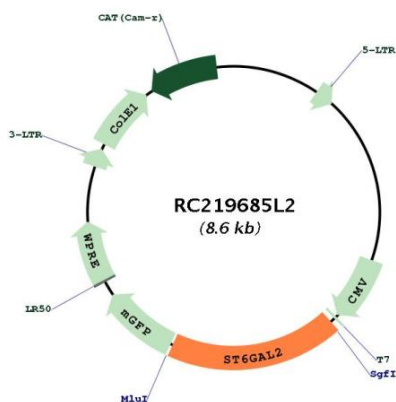
ACCN:	NM_032528
ORF Size:	1587 bp



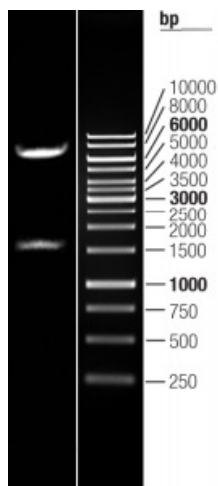
[View online >](#)

OTI Disclaimer:	The molecular sequence of this clone aligns with the gene accession number as a point of reference only. However, individual transcript sequences of the same gene can differ through naturally occurring variations (e.g. polymorphisms), each with its own valid existence. This clone is substantially in agreement with the reference, but a complete review of all prevailing variants is recommended prior to use. More info
OTI Annotation:	This clone was engineered to express the complete ORF with an expression tag. Expression varies depending on the nature of the gene.
Components:	The ORF clone is ion-exchange column purified and shipped in a 2D barcoded Matrix tube containing 10ug of transfection-ready, dried plasmid DNA (reconstitute with 100 ul of water).
Reconstitution Method:	<ol style="list-style-type: none"> 1. Centrifuge at 5,000xg for 5min. 2. Carefully open the tube and add 100ul of sterile water to dissolve the DNA. 3. Close the tube and incubate for 10 minutes at room temperature. 4. Briefly vortex the tube and then do a quick spin (less than 5000xg) to concentrate the liquid at the bottom. 5. Store the suspended plasmid at -20°C. The DNA is stable for at least one year from date of shipping when stored at -20°C.
RefSeq:	NM_032528.1 , NP_115917.1
RefSeq Size:	1793 bp
RefSeq ORF:	1590 bp
Locus ID:	84620
UniProt ID:	Q96JF0
Cytogenetics:	2q12.3
Protein Families:	Transmembrane
MW:	60 kDa
Gene Summary:	This locus encodes a sialyltransferase. The encoded type II transmembrane protein catalyzes the transfer of sialic acid from CMP to an oligosaccharide substrate. Polymorphisms at this locus may be associated with variations in risperidone response in schizophrenic patients. Alternatively spliced transcript variants have been described. [provided by RefSeq, Jan 2012]

Product images:



Circular map for RC219685L2



Double digestion of RC219685L2 using SgfI and MluI