

Product datasheet for RC219672L4

ULBP3 (NM_024518) Human Tagged Lenti ORF Clone

Product data:

Product Type:	Expression Plasmids
Product Name:	ULBP3 (NM_024518) Human Tagged Lenti ORF Clone
Tag:	mGFP
Symbol:	ULBP3
Synonyms:	N2DL-3; NKG2DL3; RAET1N
Mammalian Cell Selection:	Puromycin
Vector:	pLenti-C-mGFP-P2A-Puro (PS100093)
E. coli Selection:	Chloramphenicol (34 ug/mL)
ORF Nucleotide Sequence:	The ORF insert of this clone is exactly the same as(RC219672).
Restriction Sites:	SgfI-MluI
Cloning Scheme:	

Cloning sites used for ORF Shuttling:



* The last codon before the Stop codon of the ORF.

ACCN:	NM_024518
ORF Size:	732 bp



[View online »](#)

OTI Disclaimer: Due to the inherent nature of this plasmid, standard methods to replicate additional amounts of DNA in E. coli are highly likely to result in mutations and/or rearrangements. Therefore, OriGene does not guarantee the capability to replicate this plasmid DNA. Additional amounts of DNA can be purchased from OriGene with batch-specific, full-sequence verification at a reduced cost. Please contact our customer care team at custsupport@origene.com or by calling 301.340.3188 option 3 for pricing and delivery.

The molecular sequence of this clone aligns with the gene accession number as a point of reference only. However, individual transcript sequences of the same gene can differ through naturally occurring variations (e.g. polymorphisms), each with its own valid existence. This clone is substantially in agreement with the reference, but a complete review of all prevailing variants is recommended prior to use. [More info](#)

OTI Annotation: This clone was engineered to express the complete ORF with an expression tag. Expression varies depending on the nature of the gene.

Components: The ORF clone is ion-exchange column purified and shipped in a 2D barcoded Matrix tube containing 10ug of transfection-ready, dried plasmid DNA (reconstitute with 100 ul of water).

Reconstitution Method:

1. Centrifuge at 5,000xg for 5min.
2. Carefully open the tube and add 100ul of sterile water to dissolve the DNA.
3. Close the tube and incubate for 10 minutes at room temperature.
4. Briefly vortex the tube and then do a quick spin (less than 5000xg) to concentrate the liquid at the bottom.
5. Store the suspended plasmid at -20°C. The DNA is stable for at least one year from date of shipping when stored at -20°C.

RefSeq: [NM_024518.1](#)

RefSeq Size: 735 bp

RefSeq ORF: 735 bp

Locus ID: 79465

UniProt ID: [Q9BZM4](#)

Cytogenetics: 6q25.1

Domains: MHC_I

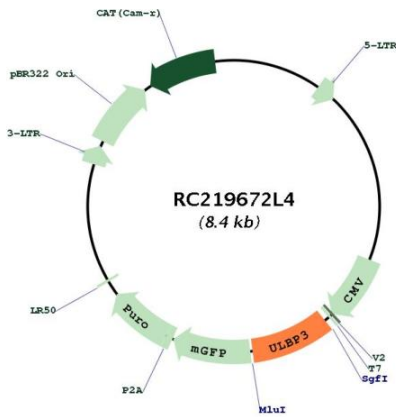
Protein Families: Druggable Genome

Protein Pathways: Natural killer cell mediated cytotoxicity

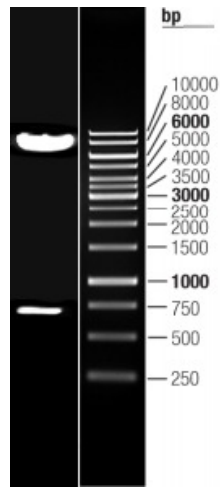
MW: 27.8 kDa

Gene Summary: The protein encoded by this gene is one of several related ligands of the KLRK1/NKG2D receptor, which is found in primary NK cells. Binding of these ligands to the receptor activates several signal transduction pathways, including the JAK2, STAT5, and ERK pathways. The encoded protein is expressed solubly and on the surface of many tumor cells, making it potentially an important target for therapeutics. [provided by RefSeq, Nov 2015]

Product images:



Circular map for RC219672L4



Double digestion of RC219672L4 using SgfI and MluI