

Product datasheet for RC219671

MS4A10 (NM_206893) Human Tagged ORF Clone

Product data:

Product Type:	Expression Plasmids
Product Name:	MS4A10 (NM_206893) Human Tagged ORF Clone
Tag:	Myc-DDK
Symbol:	MS4A10
Synonyms:	CD20L7; MS4A9
Mammalian Cell Selection:	Neomycin
Vector:	pCMV6-Entry (PS100001)
E. coli Selection:	Kanamycin (25 ug/mL)
ORF Nucleotide Sequence:	>RC219671 representing NM_206893 Red=Cloning site Blue=ORF Green=Tags(s)

TTTTGTAATACGACTCACTATAGGGCGCCGGGAATTCGTCGACTGGATCCGGTACCGAGGAGATCTGCC
GCC**CGGATCGCC**

ATGAAAGCAGAAGCCACAGTTATCCCAGCCGTTGTGCTAGGGGGCTCCCATCATGGCAAGTCTCAGCC
CAGTCCAGCCCTGGCAGACAAGTGCACCCAGAACACGACCCAGCCCAAGCTCCTGGCTCCACACCAGCA
CGATAAGTCCCAGAAGAAGAGCAGCCTTCTTAAGGAGCTGGGGGCCTCCACATCACCATCGCTCTGCTG
CACCTGGTCTTTGGGGGTACCTGGCCTCTATAGTCAAGAACCTTCACCTGGTGGTGTGAAGTCTTGGT
ATCCATCTGGGGGGCTGCCTCTTTTCTCATTTTCAGGGATCTTGGCGATAACAATGAAGACCTTTTCTAA
AACTTACCTGAAGATGTTGTGCCTGATGACAAACCTCATCAGCCTCTTTTGCCTGCTGTCTGGCCTCTTC
GTCATCTCCAAGGATCTCTTTCTGGAGAGCCATTGAGTCCCGGATCTGGAGAATGTACCCCAACTCCA
CGGTCCACATCCAGAGGCTGGAGCTGGCCTTGCTCTGCTTCACTGTCTAGAGCTCTTCTGCCAGTGCC
CACAGCTGTACAGCCTGGAGAGGGGACTGCCCATCTGCAAAGAATGATGATGCATGCCTTGTCCGAAT
ACACCATTGCATCTCAAAGGCCTGCCGGTGGAGCCCCGCCATCTACCAGAGTGTGATTCAAGGCGACG
CACAACAAGCAACATCAGAGGCTCAGAGAAGTTAAGCAAGTTGCCCGGACACATGGATAGTCACTGA
CGGAGCTGGATCTGGGCCAGACTGCAAAC

ACGCGTACGCGGCCGCTCGAGCAGAAACTCATCTCAGAAGAGGATCTGGCAGCAAATGATATCCTGGATT
ACAAGGATGACGACGATAAGGTTTAA



[View online »](#)

Protein Sequence: >RC219671 representing NM_206893
 Red=Cloning site Green=Tags(s)

MKAEATVIPSRCARGLPSWQVLSVPVQPWQTSAPQNTTQP KLLAPHQHDKSQKSSLLKELGAFHITIAL
 HLVFGGYLASIVKNLHLVVLKSWYPFWGAASF LISGILAITMKTFSKTYLKMLCLMTNLISLFCVLSGLF
 VISKDLFLESPFESPIWRMYPNSTVHIQRLELALLCFTVLELFLPVPVAVTAWRGDCPSAKNDDACLVPN
 TPLHLKGLPVEPPPSYQSVIQGDAQHKQHQRLEVKVQVAPDTWIVTDGAAIWAQTAN

TRTRPLEQKLISEEDLAANDILDYKDDDDKV

Chromatograms: https://cdn.origene.com/chromatograms/mk8014_a07.zip

Restriction Sites: SgfI-MluI

Cloning Scheme:

Cloning sites used for ORF Shuttling:



* The last codon before the Stop codon of the ORF

ACCN: NM_206893

ORF Size: 801 bp

OTI Disclaimer: The molecular sequence of this clone aligns with the gene accession number as a point of reference only. However, individual transcript sequences of the same gene can differ through naturally occurring variations (e.g. polymorphisms), each with its own valid existence. This clone is substantially in agreement with the reference, but a complete review of all prevailing variants is recommended prior to use. [More info](#)

OTI Annotation: This clone was engineered to express the complete ORF with an expression tag. Expression varies depending on the nature of the gene.

Components: The ORF clone is ion-exchange column purified and shipped in a 2D barcoded Matrix tube containing 10ug of transfection-ready, dried plasmid DNA (reconstitute with 100 ul of water).

Reconstitution Method:

1. Centrifuge at 5,000xg for 5min.
2. Carefully open the tube and add 100ul of sterile water to dissolve the DNA.
3. Close the tube and incubate for 10 minutes at room temperature.
4. Briefly vortex the tube and then do a quick spin (less than 5000xg) to concentrate the liquid at the bottom.
5. Store the suspended plasmid at -20°C. The DNA is stable for at least one year from date of shipping when stored at -20°C.

RefSeq: [NM_206893.2](#)

RefSeq Size: 2287 bp

RefSeq ORF: 804 bp

Locus ID: 341116

UniProt ID: [Q96PG2](#)

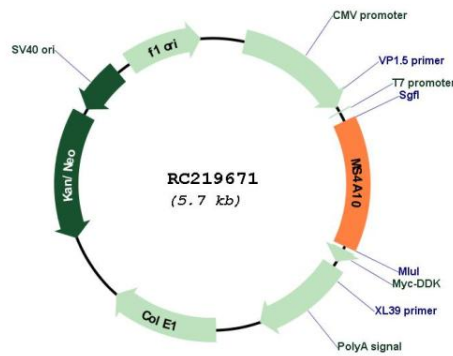
Cytogenetics: 11q12.2

Protein Families: Druggable Genome, Transmembrane

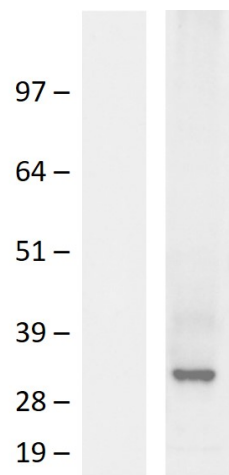
MW: 29.6 kDa

Gene Summary: Most MS4A genes, including MS4A10, encode proteins with at least 4 potential transmembrane domains and N- and C-terminal cytoplasmic domains encoded by distinct exons.[supplied by OMIM, Apr 2004]

Product images:



Circular map for RC219671



Western blot validation of overexpression lysate (Cat# [LY404155]) using anti-DDK antibody (Cat# [TA592569]). Left: Cell lysates from untransfected HEK293T cells; Right: Cell lysates from HEK293T cells transfected with RC219671 using transfection reagent PEI.