

Product datasheet for RC219665

METTL2A (NM_181725) Human Tagged ORF Clone

Product data:

Product Type:	Expression Plasmids
Product Name:	METTL2A (NM_181725) Human Tagged ORF Clone
Tag:	Myc-DDK
Symbol:	METTL2A
Synonyms:	METTL2
Mammalian Cell Selection:	Neomycin
Vector:	pCMV6-Entry (PS100001)
E. coli Selection:	Kanamycin (25 ug/mL)
ORF Nucleotide Sequence:	>RC219665 representing NM_181725 Red=Cloning site Blue=ORF Green=Tags(s)

TTTTGTAATACGACTCACTATAGGGCGGCCGGAATTCGTCGACTGGATCCGGTACCGAGGAGATCTGCC
GCC**CGATCGCC**

ATGGCCGGCTCCTACCCTGAAGGTGCACCTGCAGTCTCGCCGATAAGAGGCAGCAGTTCGGAAGCCGGT
TCCTGAGAGATCCGGCGCGCTCTCCACCACAATGCCTGGGACAATGTGGAGTGGTCGGAAGAGCAAGC
CGCGGCCGGGAGAGAAAAGTCCAGGAGAACAGTATCCAGCGGGTGTGCCAGGAGAAAACAAGTTGATTAT
GAGATCAATGCCACAAACTGGAATGACTTCTACAAAATCCACGAAAATGGGTTTTTCAAGGATAGAC
ATTGGCTTTTTACCGAATCCCTGAGCTGGCACCTAGCCAAAATCAAAATCATTTGAAGGACTGGTTCTT
GGAGAACAAGAGTGAAGTACCTGAATGTAGAAACAATGAGGATGGACCTGGTTAATAATGGAAGAACAG
CACAAGTGTCTTCAAAGAGCCTTGAACATAAAACACAGACACTTCTGTGGAGGAGAATGTAACCTCAGA
AAATTAGTGACCTGGAATTTGTGCTGATGAGTTTCTGGATCCTCAGCCACCTACCGAATACTGGAGGT
TGGCTGTGGTGTGGGAAACACAGTCTTTCCAATTTACAAACGAACAATGACCCAGGACTCTTTGTTTAT
TGCTGTGATTTTTCTCCACAGCTATAGAACTGGTCCAGACAAATTCAGAATATGATCCTTCTCGGTGTT
TTGCCTTTGTTACGACCTGTGTGATGAAGAGAAGAGTTACCCAGTGCCCAAGGGCAGTCTTGATATTAT
CATTCTCATATTTGTTCTTTTCAGCAATTGTTCCAGACAAGATGCAGAAGGCTATCAACAGGCTGAGCAGG
CTTCTGAAACCTGGCGGGATGATGCTTCTGCGAGATTACGCGCCGCTATGACATGGCTCAGCTTCGGTTTA
AAAAAGGTCAGTGTCTATCTGGAAATTTCTACGTGAGAGGTGATGGAACAGAGTTTACTTCTTCACACA
AGAGGAACTGGACACGCTTTTACCACCTGCTGGACTGGAAAAAGTTACAGAACCTGGTGGATCGCCGACTG
CAGGTGAACCGAGGAAAGCAACTGACAATGTACCGGGTTTGGATTGATGCAAACTACTGCAAGCCCTTCT
TGTCAGCACCAGC

ACGCGTACGCGGCCGCTCGAGCAGAAACTCATCTCAGAAGAGGATCTGGCAGCAATGATATCCTGGATT
ACAAGGATGACGACGATAAGGTTTAA



[View online >](#)

Protein Sequence: >RC219665 representing NM_181725
Red=Cloning site Green=Tags(s)

MAGSYPEGAPAVLADKRQQFGSRFLRDPARVFFHNAWDNVWSEEQAAAAERKVQENSIQRVCQEKQVDY
 EINAHKYWNDFYKIHENGFFKDRHWFTEFPELAPSQNQNLKDWFLNKSEVPECRNNDGPGIMEEQ
 HKCSSKSLHKTQTLPEENVTKIISDLEICAEFFPGSSATYRILEVCGVGNTVFPILQTNNDPGLFVY
 CCDFSSATAIELVQTNSEYDPSRCFAFVHDLCEEEKSYPVPGSLDIIILIFVLSAIVPDKMQKAINRLSR
 LLKPGGMMLLRDYGRYDMAQLRFKKGQCLSGNFYVRGDGTRVYFFTQEELDTLFTTAGLEKVQNLVDRRL
 QVNRGKQLTMYRVVIQCKYCKPLLSSTS

TRTRPLEQKLISEEDLAANDILDYKDDDDKV

Chromatograms: https://cdn.origene.com/chromatograms/mk8055_h05.zip

Restriction Sites: SgfI-MluI

Cloning Scheme:



ACCN: NM_181725

ORF Size: 1134 bp

OTI Disclaimer: The molecular sequence of this clone aligns with the gene accession number as a point of reference only. However, individual transcript sequences of the same gene can differ through naturally occurring variations (e.g. polymorphisms), each with its own valid existence. This clone is substantially in agreement with the reference, but a complete review of all prevailing variants is recommended prior to use. [More info](#)

OTI Annotation: This clone was engineered to express the complete ORF with an expression tag. Expression varies depending on the nature of the gene.

Components: The ORF clone is ion-exchange column purified and shipped in a 2D barcoded Matrix tube containing 10ug of transfection-ready, dried plasmid DNA (reconstitute with 100 ul of water).

Reconstitution Method:

1. Centrifuge at 5,000xg for 5min.
2. Carefully open the tube and add 100ul of sterile water to dissolve the DNA.
3. Close the tube and incubate for 10 minutes at room temperature.
4. Briefly vortex the tube and then do a quick spin (less than 5000xg) to concentrate the liquid at the bottom.
5. Store the suspended plasmid at -20°C. The DNA is stable for at least one year from date of shipping when stored at -20°C.

RefSeq: [NM_181725.4](#)

RefSeq Size: 2519 bp

RefSeq ORF: 1137 bp

Locus ID: 339175

UniProt ID: [Q96LZ6](#)

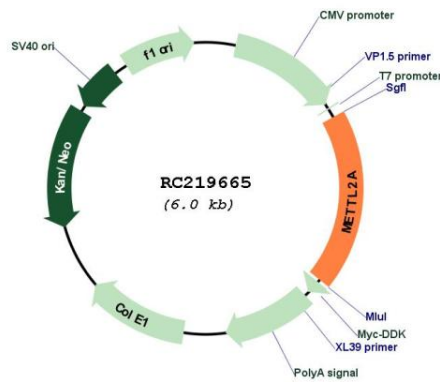
Cytogenetics: 17q23.2

Protein Families: Druggable Genome

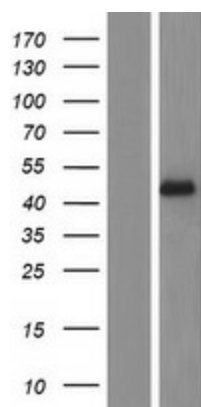
MW: 43.4 kDa

Gene Summary: Probable S-adenosyl-L-methionine-dependent methyltransferase that mediates 3-methylcytidine modification of some tRNAs.[UniProtKB/Swiss-Prot Function]

Product images:



Circular map for RC219665



Western blot validation of overexpression lysate (Cat# [LY405640]) using anti-DDK antibody (Cat# [TA50011-100]). Left: Cell lysates from untransfected HEK293T cells; Right: Cell lysates from HEK293T cells transfected with RC219665 using transfection reagent MegaTran 2.0 (Cat# [TT210002]).