

## Product datasheet for **RC219661**

### Junctophilin 2 (JPH2) (NM\_020433) Human Tagged ORF Clone

#### Product data:

Product Type:	Expression Plasmids
Product Name:	Junctophilin 2 (JPH2) (NM_020433) Human Tagged ORF Clone
Tag:	Myc-DDK
Symbol:	Junctophilin 2
Synonyms:	CMH17; JP-2; JP2
Mammalian Cell Selection:	Neomycin
Vector:	pCMV6-Entry (PS100001)
E. coli Selection:	Kanamycin (25 ug/mL)



[View online »](#)

**ORF Nucleotide Sequence:**

>RC219661 representing NM\_020433  
 Red=Cloning site Blue=ORF Green=Tags(s)

TTTTGTAATACGACTCACTATAGGGCGGCCGGAATTCGTCGACTGGATCCGGTACCGAGGAGATCTGCC  
 GCC**CGGATCGCC**

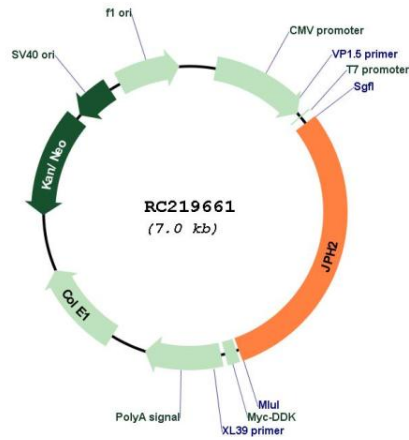
ATGAGTGGGGCCGCTTCGACTTTGATGATGGAGGGGCGTACTGCGGGGCTGGGAGGGGGAAAGGCC  
 ATGGGCATGGAAGTGTGCACAGGCCCAAGGGCCAGGGCGAATACTCTGGCTCCTGGAACCTTTGGCTTTGA  
 GGTGGCAGGTGTCTACACCTGGCCAGCGGAAACACCTTTGAGGGATACTGGAGCCAGGGCAAACGGCAT  
 GGGCTGGGCATAGAGACCAAGGGGCGCTGGCTCTACAAGGGCGAGTGGACACATGGCTTCAAGGGACGCT  
 ACGGAATCCGGCAGAGCTCAAGCAGCGGTGCCAAGTATGAGGGCACCTGGAACAATGGCTGCAAGACGG  
 CTATGGCACCGAGACCTATGCTGATGGAGGGACGTACCAAGGCCAGTTCACCAACGGCATGCGCCATGGC  
 TACGGAGTACGCCAGAGCGTGCCTACGGGATGGCCGTGGTGGTGCCTCGCCGCTGCGCACGTGCTGT  
 CGTCCCTGCGCAGCGAGCACAGCAACGGCACGGTGGCCCCGACTCTCCCGCTCGCCGGCTCCGACGG  
 CCCCGCGCTGCCCTCGCCGCCATCCCGGTGGCGGCTTCGCGCTCAGCCTCCTGGCCAATGCCAGGGCG  
 GCCGCGCGGGCGCCAAAGGGCGCGGCCTTCCAGCGGGGCGCGCTGCTGGGAAGCTGCGGGCGCGAG  
 AGTCGCGCACGTCCGTGGGTAGCCAGCGCAGCCGTGTCAGCTTCCCTTAAGAGCGACCTCAGCTCGGGCGC  
 CAGCGACGCCGCTCCACCGCCAGCCTGGGAGAGGGCCGCGAGGGCGCCGACGAGGCCGACCCCTTCGAG  
 GCCGATATCGACGCCACCACCAGGAGCTACATGGGCGAGTGGAAAGACGACAACGCTCGGGCTTCG  
 GCGTGAGCGAACGCTCCAGTGGCTCCGCTACGAGGGCGAGTGGCTGGACAACCTGCGCCACGGCTATGG  
 CTGACCACGCTGCCCGACGGCCACCGGAGGAGGGCAAGTACCGCCACAACGTGCTGGTCAAGGACACC  
 AAGCGCCGATGCTGCAGCTCAAGAGCAACAAGTCCGCCAGAAAGTGGAGCACAGTGTGGAGGGTGCC  
 AGCGCGCGCTGCTATCGCGGCCAGAAGGCCGAGATTGCCGCTCCAGGACAAGCCACGCCAAGGCCAA  
 AGCTGAGGCAGCGGAACAGGCCGCCCTGGCTGCCAACCAGGAGTCCAACATTGCTCGCACTTTGGCCAGG  
 GAGCTGGCTCCGACTTCTACCAGCCAGGTCCGGAATATCAGAAGCGCCGGCTGCTGCAGGAGATCCTGG  
 AGAACTCGGAGAGCTGCTGGAGCCCCGACCGGGCGCGCGCGCAGCGGGCTCCACAGCCGCCCG  
 CGAGAGCCCGAGCTGCACGAGCGTGAGACCCCTCGGCCGAGGGTGGCTCCCCGTACCGGCCGGGACG  
 CCCCCGACGCCAAGCGGCCAGGCCGGGGTGTCCAAGGACGGCTGCTGAGCCAGGGCGCTGGAACG  
 GCGAGCCAGCGGTGAGGGCAGCCGTCAGTCACTCCGTCGAGGGCGCGGGCCGCCGACGCCCGCGCG  
 TCCAGCCACCGAGCGCATGGCCATCGAGGCTCTGCAGGCACCGCCTGCGCCGTCGCGGGAGCCGGAGGTG  
 GCGCTTTACCAGGGCTACCACAGCTATGCTGTGCGCACACCGCCCGGAGCCCCACCCTTTGAGGACC  
 AGCCCCGAGCCGAGGTCTCCGGTCCGAGTCCGCGCCCTCGTCCCGGCCACCGCCCCGCTGCAGGCCCC  
 CACGCTCCGAGGCCCGAGCCTGCACGCGAGACCCCCGCAAGCTGGAGCCCAAGCCATCATCCCCAAA  
 GCCGAGCCAGGGCCAAGGCCCGCAAGACTGAGGCTCGAGGGCTGACCAAGGCGGGGGCCAAGAAGAAGG  
 CGCGGAAGGAGCCGCACTGGCGGCAGAGGGCGAGGTGGAGGTGGAAGAGGTCCCCAACACCATCCTCAT  
 CTGCATGGTGATCCTGCTGAACATCGGCCCTGGCCATCCTCTTTGTTACCTCCTGACC

**ACGCGT**ACGCGGGCGCTCGAGCAGAACTCATCTCAGAAGAGGATCTGGCAGCAATGATATCCTGGATT  
 ACAAGGATGACGACGATAAGGTTTAA

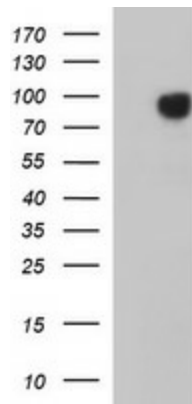


<b>Components:</b>	The ORF clone is ion-exchange column purified and shipped in a 2D barcoded Matrix tube containing 10ug of transfection-ready, dried plasmid DNA (reconstitute with 100 ul of water).
<b>Reconstitution Method:</b>	<ol style="list-style-type: none"><li>1. Centrifuge at 5,000xg for 5min.</li><li>2. Carefully open the tube and add 100ul of sterile water to dissolve the DNA.</li><li>3. Close the tube and incubate for 10 minutes at room temperature.</li><li>4. Briefly vortex the tube and then do a quick spin (less than 5000xg) to concentrate the liquid at the bottom.</li><li>5. Store the suspended plasmid at -20°C. The DNA is stable for at least one year from date of shipping when stored at -20°C.</li></ol>
<b>Note:</b>	Plasmids are not sterile. For experiments where strict sterility is required, filtration with 0.22um filter is required.
<b>RefSeq:</b>	<a href="#">NM_020433.5</a>
<b>RefSeq Size:</b>	4802 bp
<b>RefSeq ORF:</b>	2091 bp
<b>Locus ID:</b>	57158
<b>UniProt ID:</b>	<a href="#">Q9BR39</a>
<b>Cytogenetics:</b>	20q13.12
<b>Protein Families:</b>	Transmembrane
<b>MW:</b>	74 kDa
<b>Gene Summary:</b>	Junctional complexes between the plasma membrane and endoplasmic/sarcoplasmic reticulum are a common feature of all excitable cell types and mediate cross talk between cell surface and intracellular ion channels. The protein encoded by this gene is a component of junctional complexes and is composed of a C-terminal hydrophobic segment spanning the endoplasmic/sarcoplasmic reticulum membrane and a remaining cytoplasmic domain that shows specific affinity for the plasma membrane. This gene is a member of the junctophilin gene family. Alternative splicing has been observed at this locus and two variants encoding distinct isoforms are described. [provided by RefSeq, Jul 2008]

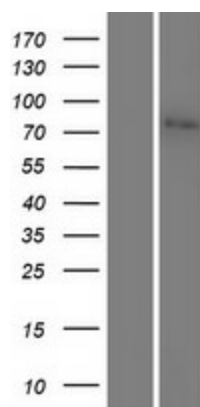
Product images:



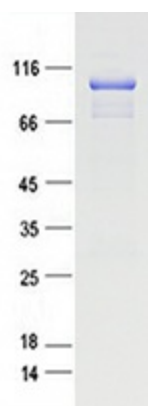
Circular map for RC219661



HEK293T cells were transfected with the pCMV6-ENTRY control (Cat# [PS100001], Left lane) or pCMV6-ENTRY JPH2 (Cat# RC219661, Right lane) cDNA for 48 hrs and lysed. Equivalent amounts of cell lysates (5 ug per lane) were separated by SDS-PAGE and immunoblotted with anti-JPH2 (Cat# [TA506941]). Positive lysates [LY412483] (100ug) and [LC412483] (20ug) can be purchased separately from OriGene.



Western blot validation of overexpression lysate (Cat# [LY412483]) using anti-DDK antibody (Cat# [TA50011-100]). Left: Cell lysates from untransfected HEK293T cells; Right: Cell lysates from HEK293T cells transfected with RC219661 using transfection reagent MegaTran 2.0 (Cat# [TT210002]).



Coomassie blue staining of purified JPH2 protein (Cat# [TP319661]). The protein was produced from HEK293T cells transfected with JPH2 cDNA clone (Cat# RC219661) using MegaTran 2.0 (Cat# [TT210002]).