

## Product datasheet for RC219644

### PDLIM2 (NM\_176871) Human Tagged ORF Clone

#### Product data:

**Product Type:** Expression Plasmids  
**Product Name:** PDLIM2 (NM\_176871) Human Tagged ORF Clone  
**Tag:** Myc-DDK  
**Symbol:** PDLIM2  
**Synonyms:** MYSTIQUE; SLIM  
**Mammalian Cell Selection:** Neomycin  
**Vector:** pCMV6-Entry (PS100001)  
**E. coli Selection:** Kanamycin (25 ug/mL)  
**ORF Nucleotide Sequence:** >RC219644 representing NM\_176871  
Red=Cloning site Blue=ORF Green=Tags(s)

TTTTGTAATACGACTCACTATAGGGCGGCCGGAATTCGTCGACTGGATCCGGTACCGAGGAGATCTGCC  
GCC**CGGATCGCC**

ATGGCGTTGACGGTGGATGTGGCCGGGCCAGGCCCTGGGGTTCGGTATCACAGGGGGCAGGGATTTCC  
ACACGCCCATCATGGTGACTAAGGTGGCCGAGCGGGCAAAGCCAAGGACGCTGACCTCCGGCCTGGAGA  
CATAATCGTGGCCATCAACGGGAAAGCGGGAGGGCATGCTGCATGCCGAGGCCAGAGCAAGATCCGC  
CAGAGCCCCTCGCCCCTGCGGCTGCAGCTGGACCGGTCTCAGGCTACGTCTCCAGGGCAGACCAATGGG  
ACAGCTCCTTGAAGTGTGGGACTCGCTTCCAGGGCTCCGTGAGGACATACACTGAGAGTCAGTCCTC  
CTTAAGGTCTCCTACTCCAGCCCAACCTCCCTCAGCCCGAGGGCCGGCAGCCCTTCTCACCACCACC  
TCTAGCAGCTCCCTCACTGGAGAGGCAGCCATCAGCCGACGTTCCAGAGTCTGGCATGTTCCCCCGGCC  
TCCCCGCTGCTGACCGCCTGTCTACTCAGGCCGCCCTGGAAGCCGACAGGCCGGCTCGGCCGCGCTGG  
CGACTCGGCGGTGCTGGTGTGCGCCTTCCCCGGGCCCTCGTTCCTCCAGGCCAGCATGGACTCGGAA  
GGGGGAAGCCTCCTCTGGACGAGGACTCGGAAGTCTTCAAGATGCTGCAGGAAAATCGCAGGGGACGG  
CGCCCCCGACAGTCCAGCTCCTTTCGGCTCTGCAGGAAGCCCTGGAGGCTGAGGAGAGAGGTGGCAC  
GCCAGCCTTCTTGCCAGCTCACTGAGCCCCAGTCTCCCTGCCGCCCTCCAGGGCCCTGGCCACCCT  
CCCAAGCTCCACACTTGTGAGAAGTGCAGTACCAGCATCGGAACCAGGCTGTGGCATCCAGGAGGGCC  
GGTACCGCCACCCCGGCTGCTACACCTGTGCCGACTGTGGGCTGAACCTGAAGATGCGCGGGCACTTCTG  
GGAGGACGCTTGTGCTATGGAGGAATGAGATTGTCACTGGAAGCTTTGGAGGGATGGTGGAGGGCGCC  
AAGCGGAGGGACAGGAGGAAGACCAGGAGACCCATCCAGCCAAGCTGG

**ACGCGT**ACGCGGCCGCTCGAGCAGAACTCATCTCAGAAGAGGATCTGGCAGCAAATGATATCCTGGATT  
ACAAGGATGACGACGATAAGGTTTAA



[View online »](#)

**Protein Sequence:** >RC219644 representing NM\_176871  
Red=Cloning site Green=Tags(s)

MALTVDVAGPAPWGFRITGGGRDFHTPIMVTKVAER GKAKDADLRPGDIIVAINGESAEGMLHAEQSKIR  
 QSPSPLRLQLDRSQATSPGQTNGDSSLEVLATRFQGSVRTYTESQSSLRSSYSPTSLSPRAGSPFSPPP  
 SSSSLTGEAAISRFSQSLACSPGLPAADRLSYSGRPGSRQAGLGRAGDSAVLVLPPSPGPRSSRPSMDSE  
 GGSLLLDDEDSEVFKMLQENREGRAAPRQSSSFRLLEALEAEERGGTPAFLPSSLS PQSSLPASRALATP  
 PKLHTCEKCSTSIANQAVRIQEGRYRHPGICYTCADCGLNLKMRGHFWEDACAMEGMRLSLEALEGMVEGA  
 KRRDRRKTRRPIQPSW

TRTRPLEQKLISEEDLAANDILDYKDDDDKV

**Chromatograms:** [https://cdn.origene.com/chromatograms/mk8055\\_b02.zip](https://cdn.origene.com/chromatograms/mk8055_b02.zip)

**Restriction Sites:** SgfI-MluI

**Cloning Scheme:**



**ACCN:** NM\_176871

**ORF Size:** 1098 bp

**OTI Disclaimer:** The molecular sequence of this clone aligns with the gene accession number as a point of reference only. However, individual transcript sequences of the same gene can differ through naturally occurring variations (e.g. polymorphisms), each with its own valid existence. This clone is substantially in agreement with the reference, but a complete review of all prevailing variants is recommended prior to use. [More info](#)

**OTI Annotation:** This clone was engineered to express the complete ORF with an expression tag. Expression varies depending on the nature of the gene.

**Components:** The ORF clone is ion-exchange column purified and shipped in a 2D barcoded Matrix tube containing 10ug of transfection-ready, dried plasmid DNA (reconstitute with 100 ul of water).

**Reconstitution Method:**

1. Centrifuge at 5,000xg for 5min.
2. Carefully open the tube and add 100ul of sterile water to dissolve the DNA.
3. Close the tube and incubate for 10 minutes at room temperature.
4. Briefly vortex the tube and then do a quick spin (less than 5000xg) to concentrate the liquid at the bottom.
5. Store the suspended plasmid at -20°C. The DNA is stable for at least one year from date of shipping when stored at -20°C.

**RefSeq:** [NM\\_176871.5](#)

**RefSeq Size:** 4611 bp

**RefSeq ORF:** 1101 bp

**Locus ID:** 64236

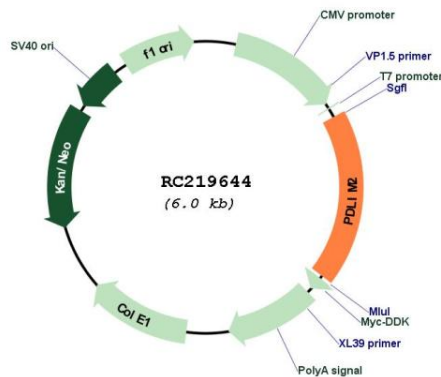
**UniProt ID:** [Q96JY6](#)

**Cytogenetics:** 8p21.3

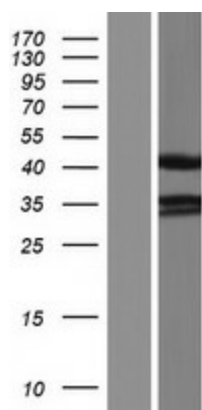
**MW:** 39 kDa

**Gene Summary:** This gene encodes a member of the ALP subfamily of PDZ-LIM domain proteins. The encoded protein suppresses anchorage-dependent growth and promotes cell migration and adhesion through interactions with the actin cytoskeleton via the PDZ domain. The encoded protein is also a putative tumor suppressor protein, and decreased expression of this gene is associated with several malignancies including breast cancer and adult T-cell leukemia. Alternatively spliced transcript variants encoding multiple isoforms have been observed for this gene. [provided by RefSeq, Oct 2011]

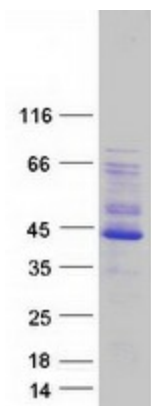
**Product images:**



Circular map for RC219644



Western blot validation of overexpression lysate (Cat# [LY406049]) using anti-DDK antibody (Cat# [TA50011-100]). Left: Cell lysates from untransfected HEK293T cells; Right: Cell lysates from HEK293T cells transfected with RC219644 using transfection reagent MegaTran 2.0 (Cat# [TT210002]).



Coomassie blue staining of purified PDLIM2 protein (Cat# [TP319644]). The protein was produced from HEK293T cells transfected with PDLIM2 cDNA clone (Cat# RC219644) using MegaTran 2.0 (Cat# [TT210002]).