

Product datasheet for RC219641

SCDGFB (PDGFD) (NM_025208) Human Tagged ORF Clone

Product data:

Product Type:	Expression Plasmids
Product Name:	SCDGFB (PDGFD) (NM_025208) Human Tagged ORF Clone
Tag:	Myc-DDK
Symbol:	SCDGFB
Synonyms:	IEGF; MSTP036; SCDGF-B; SCDGFB
Mammalian Cell Selection:	Neomycin
Vector:	pCMV6-Entry (PS100001)
E. coli Selection:	Kanamycin (25 ug/mL)
ORF Nucleotide Sequence:	>RC219641 representing NM_025208 Red=Cloning site Blue=ORF Green=Tags(s)

TTTTGTAATACGACTCACTATAGGGCGGCCGGAATTCGTCGACTGGATCCGGTACCGAGGAGATCTGCC
 GCCCGCATCGCC

ATGCACCGGCTCATCTTTGTCTACACTCTAATCTGCGCAAACCTTTGCAGCTGTCGGGACACTTCTGCAA
 CCCCAGAGCGCATCCATCAAAGCTTTGCGCAACGCCAACCTCAGGCGAGATGAGAGCAATCACCTCAC
 AGACTTGTACCGAAGAGATGAGACCATCCAGGTGAAAGGAAACGGCTACGTGCAGAGTCTAGATCCCCG
 AACAGCTACCCAGGAACCTGCTCCTGACATGGCGGCTTCACTCTCAGGAGAATACACGGATACAGCTAG
 TGTTTGACAATCAGTTTGGATTAGAGGAAGCAGAAAATGATATCTGTAGGTATGATTTTGTGGAAGTTGA
 AGATATATCCGAAACAGTACCATTATTAGAGGACGATGGTGTGGACACAAGGAAGTTCCCTCAAGGATA
 AAATCAAGAACGAACCAATTAATATCACATTCAGTCCGATGACTACTTTGTGGCTAAACCTGGATTCA
 AGATTTATTATTCTTTGCTGGAAGATTTCCAACCCGACGAGCTTCAGAGACCAACTGGGAATCTGTCA
 AAGCTCTATTTAGGGGTATCCTATAACTCTCCATCAGTAACGGATCCCCTCTGATTGCGGATGCTCTG
 GACAAAAAATTCAGAAATTTGATACAGTGGAAGATCTGCTCAAGTACTTCAATCCAGAGTCATGGCAAG
 AAGATCTTGAGAATATGTATCTGGACACCCCTCGGTATCGAGGAGGTCATACCATGACCGGAAGTCAAA
 AGTTGACCTGGATAGGCTCAATGATGATGCCAAGCGTTACAGTTGCACTCCAGGAATTACTCGGTCAAT
 ATAAGAGAAGAGCTGAAGTTGGCCAATGTGGTCTTCTTTCCAGTTGCCTCCTCGTGCAGCGCTGTGGAG
 GAAATTGTGGCTGTGGAAGTGTCAACTGGAGGTCCTGCACATGCAATTCAGGGAAAACCGTGAAAAAGTA
 TCATGAGGTATTACAGTTTGAGCCTGGCCACATCAAGAGGAGGGGTAGAGCTAAGACCATGGCTCTAGTT
 GACATCCAGTTGGATCACCATGAACGATGTGATTGTATCTGCAGCTCAAGACCACCTCGA

ACGCGTACGCGGCCGCTCGAGCAGAACTCATCTCAGAAGAGGATCTGGCAGCAAATGATATCCTGGATT
 ACAAGGATGACGACGATAAGGTTTAA


[View online »](#)

Protein Sequence: >RC219641 representing NM_025208
 Red=Cloning site Green=Tags(s)

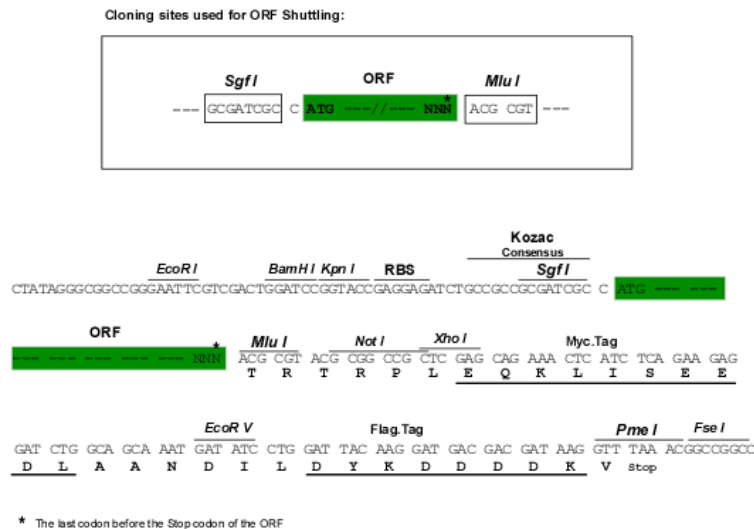
MHRLIFVYTLICANFCSRDTSATPQSASIKALRNANLRRDESNHLDLYRDETIQVKNGYVQSPRFP
 NSYPRNLLLTWRLHSQENTRIQLVFDNQFGLLEAENDICRYDFVEVEDISETSTIIRGRWCGHKEVPPRI
 KSRTNQIKITFKSDDYFVAKPGFKIYYSLLEDFQAAASETNWESVTSSISGVSYNSPSVTDPTLIADAL
 DKKIAEFDTVEDLLKYFNPESWQEDLENMYLDTPRYRGRSYHDKRSKVDLDRLNDDAKRYSCTPRNYSVN
 IREELKLANVVFPRCLLVQRCGNGCGCTVNWRSCTCNSGKTVKKYHEVLQFEPGHIKRRGRAKTMALV
 DIQLDHERCDCICSSRPPR

TRTRPLEQKLISEEDLAANDILDYKDDDDKV

Chromatograms: https://cdn.origene.com/chromatograms/mk6047_d09.zip

Restriction Sites: SgfI-MluI

Cloning Scheme:



ACCN: NM_025208

ORF Size: 1110 bp

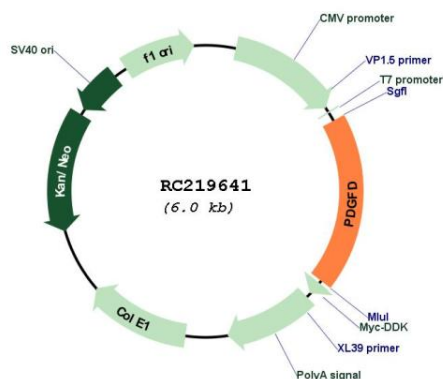
OTI Disclaimer: The molecular sequence of this clone aligns with the gene accession number as a point of reference only. However, individual transcript sequences of the same gene can differ through naturally occurring variations (e.g. polymorphisms), each with its own valid existence. This clone is substantially in agreement with the reference, but a complete review of all prevailing variants is recommended prior to use. [More info](#)

OTI Annotation: This clone was engineered to express the complete ORF with an expression tag. Expression varies depending on the nature of the gene.

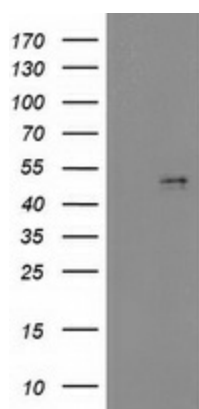
Components: The ORF clone is ion-exchange column purified and shipped in a 2D barcoded Matrix tube containing 10ug of transfection-ready, dried plasmid DNA (reconstitute with 100 ul of water).

Reconstitution Method:	<ol style="list-style-type: none"> 1. Centrifuge at 5,000xg for 5min. 2. Carefully open the tube and add 100ul of sterile water to dissolve the DNA. 3. Close the tube and incubate for 10 minutes at room temperature. 4. Briefly vortex the tube and then do a quick spin (less than 5000xg) to concentrate the liquid at the bottom. 5. Store the suspended plasmid at -20°C. The DNA is stable for at least one year from date of shipping when stored at -20°C.
RefSeq:	<u>NM_025208.5</u>
RefSeq Size:	3870 bp
RefSeq ORF:	1113 bp
Locus ID:	80310
UniProt ID:	<u>Q9GZP0</u>
Cytogenetics:	11q22.3
Domains:	CUB
Protein Families:	Druggable Genome, Secreted Protein
Protein Pathways:	Focal adhesion, Gap junction, Melanoma, Prostate cancer, Regulation of actin cytoskeleton
MW:	40.2 kDa
Gene Summary:	<p>The protein encoded by this gene is a member of the platelet-derived growth factor family. The four members of this family are mitogenic factors for cells of mesenchymal origin and are characterized by a core motif of eight cysteines, seven of which are found in this factor. This gene product only forms homodimers and, therefore, does not dimerize with the other three family members. It differs from alpha and beta members of this family in having an unusual N-terminal domain, the CUB domain. Two splice variants have been identified for this gene. [provided by RefSeq, Jul 2008]</p>

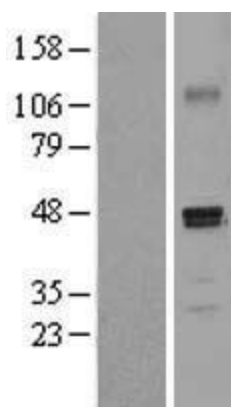
Product images:



Circular map for RC219641



HEK293T cells were transfected with the pCMV6-ENTRY control (Cat# [PS100001], Left lane) or pCMV6-ENTRY PDGFB (Cat# RC219641, Right lane) cDNA for 48 hrs and lysed. Equivalent amounts of cell lysates (5 ug per lane) were separated by SDS-PAGE and immunoblotted with anti-PDGFB (Cat# [TA503700]). Positive lysates [LY403061] (100ug) and [LC403061] (20ug) can be purchased separately from OriGene.



Western blot validation of overexpression lysate (Cat# [LY403061]) using anti-DDK antibody (Cat# [TA50011-100]). Left: Cell lysates from untransfected HEK293T cells; Right: Cell lysates from HEK293T cells transfected with RC219641 using transfection reagent MegaTran 2.0 (Cat# [TT210002]).