

## Product datasheet for **RC219637**

### CPNE8 (NM\_153634) Human Tagged ORF Clone

#### Product data:

Product Type:	Expression Plasmids
Product Name:	CPNE8 (NM_153634) Human Tagged ORF Clone
Tag:	Myc-DDK
Symbol:	CPNE8
Mammalian Cell Selection:	Neomycin
Vector:	pCMV6-Entry (PS100001)
E. coli Selection:	Kanamycin (25 ug/mL)



[View online »](#)

**ORF Nucleotide Sequence:**

>RC219637 ORF sequence  
 Red=Cloning site Blue=ORF Green=Tags(s)

TTTTGTAATACGACTCACTATAGGGCGGCCGGAATTCGTCGACTGGATCCGGTACCGAGGAGATCTGCCGCCGCGATCGCC

ATGGACAGCCGCTACAACAGCACTGCGGGCATCGGGGACTTGAACCAGCTGAGCGCTGCCATCCCGGCCACGCGGGTGGAGGTGCCGTGCCTGCAGAAATCTTCTTGACAGAGACACATTTTCTAAATCTGATCCAATTGTGTCTTATATGTACAAGGAGTTGAAATAAAGAATGGAGAGAGTTTGAAGAAGTGAAGTAATTGATAACTTTAAATCCTGATTTTGTAAAGAAAGTTATTCTGGACTACTTTTTTGAAGAAAGAGAGAATCTTCGTTTTGACTTGTATGATGTTGATCAAAGAGCCCCAACTATCCAACATGACTTCTGGGACAAGTGTGTGTACATTGGGAGAGATCGTTGGTTCACAGGGAAGTCGCTGGAAAAACCAATAGTAGGAATCCAGGGAAGAAATGTGGTACAATCATACTACAGCAGAGGAATTAAGTGTGCAGGGATGCCGTTTTGATGCAATTTGTGCGAACAATTGGACAAGAAGGACTTCTTGGAAAATCAGATCCTTCTGTATTTTATCGAAGTAATGAAGATGGCAGTTTTACAATTTGCACAAGACAGAAGTTGTCAAAAACACTCTAAATCCAGTATGGCAAGCATTCAAGATCTCAGTCAGAGCATTATGTAATGGAGACTATGACAGAAACAATCAAAGTAGAGGTGTATGACTGGGACCGAGATGGAAGTCATGATTTTCATTGGAGAATTTACAACAAGCTATAGGGAACCTTCTAGAGGGCAGTCACAATCAACGTATATGAGGTGGTGAATCCCAAAAAGAAAGGAAAAAGAAAAATATACTAATTCTGGAACAGTAACCTTACTCTCTTCTTGGTAGAAAACAGAAAGTTTCATTCTTGACTACATTAAGGAGGGACGCAAAATCAATTTACAGTGGCTATTGATTTTACAGCATCAAACGGCAACCCTGCTCAGCCACTTCCCTCCACTATATGAATCCTTACCAACTGAATGCCTATGGTATGGCACTAAAAGCAGTGGGAGAAATGTTCAAGATTATGACAGTGATAAAATGTTCCAGCTCAGGATTTGGTGCAAAACCTCCAGATGGAAAGATATCTCACGAATTTGCTTTGAATGGGAATCCTCAAAACCCCTACTGTGATGGCATTGAGGGGTCATGGAGGCTTATTACAGGAGTCTGAAATCTGTACAACACTATATGGGCCACCAACTTTGCTCCTGTAATTAATCATGTAGCAAGATATGCTTCTTGTAAAGGATGGCTCCCAAGTATTTTGTCTTCTGATTGTTACAGATGTGTTATCTCAGATATGGCCAGACTAAGGAGTCCATAGTTAATGCCTCAAAACTCCAATGTCAATAATATAGTAGGTGTTGGACCAGCAGAAATTTGATGCAATGGTCAATGGATGGAGATGATGAAGAGTCTCTCTAGAGGAAAAATGCTGAAAGAGACATTGTGCAGTTTGTGCCATTGAGGATTATATTGACAGAAGTGAAACCACATACTGAGCATGGCTAGATTGGCTAAAGATGTCTAGCTGAGATCCCTGAGCAGTTTCTCTCTATATGAGAGCCCGAGGAATCAAGCCATCACCTGCGCCTCCCCATACACCCACCTACACATGTGTTACAGACTCAAATA

ACGCGTACGCGGCCGCTCGAGCAGAAACTCATCTCAGAAGAGGATCTGGCAGCAAATGATATCCTGGATTACAAGGATGACGACGATAAGGTTTAA

**Protein Sequence:**

>RC219637 protein sequence  
 Red=Cloning site Green=Tags(s)

MDSRYNSTAGIGDLNQLSAAIPATRVEVSVSCRNLLDRDTFSKSDPICVLYVQGVGNKEWREFGRTEVIDNTLNPDFVRKFI LDYFFEERENLRFDLYDVDSKSPNLSKHDFLGQVFC TLGEIVGSQGSRLKPIVGI PKKCGTIILTAELNCCRDAVLMQFCANKLDDKDFFGKSDPFLVFYRSNEDGSFTICHKTEVVKNTLNPVWQAFKISVRALCNGDYDRTIKVEVYDWRDGSDFIGFETTSYREL SRGQSQFNVEVVPKPKKGGKKKYTNSGTVTLLSFLVETEVSFLDYIKGGTQINFTVAIDFTASNGNPAQPTSLHYMNPYQLNAYGMALKAVGEIVQDYDSDKMFPALGFGAKLPPDGRISHEFALNGNPQNPYCDGIEGVMEAYRSLKSVQLYGPTNFAFVINHVARYASSVKDGSQYFVLLIVTDGVISDMAQTKEIVNASKLPMSIIIVGVGPAEFDAMVELDGGDDVRVSRGKYAERDQVQFVPRDYIDRSNGNHILSMARLAKDVLAEIPEQFLSYMRARGIKPSPAPPYTPPTHVLQTQI

TRTRPLEQKLI SEEDLAANDILDYKDDDDKV

**Chromatograms:**

[https://cdn.origene.com/chromatograms/mk6448\\_e06.zip](https://cdn.origene.com/chromatograms/mk6448_e06.zip)

**Restriction Sites:**

Sgfl-Mlul

Cloning Scheme:



ACCN: NM\_153634

ORF Size: 1692 bp

OTI Disclaimer: The molecular sequence of this clone aligns with the gene accession number as a point of reference only. However, individual transcript sequences of the same gene can differ through naturally occurring variations (e.g. polymorphisms), each with its own valid existence. This clone is substantially in agreement with the reference, but a complete review of all prevailing variants is recommended prior to use. [More info](#)

OTI Annotation: This clone was engineered to express the complete ORF with an expression tag. Expression varies depending on the nature of the gene.

Components: The ORF clone is ion-exchange column purified and shipped in a 2D barcoded Matrix tube containing 10ug of transfection-ready, dried plasmid DNA (reconstitute with 100 ul of water).

- Reconstitution Method:
1. Centrifuge at 5,000xg for 5min.
  2. Carefully open the tube and add 100ul of sterile water to dissolve the DNA.
  3. Close the tube and incubate for 10 minutes at room temperature.
  4. Briefly vortex the tube and then do a quick spin (less than 5000xg) to concentrate the liquid at the bottom.
  5. Store the suspended plasmid at -20°C. The DNA is stable for at least one year from date of shipping when stored at -20°C.

RefSeq: [NM\\_153634.3](#)

RefSeq Size: 3476 bp

RefSeq ORF: 1695 bp

Locus ID: 144402

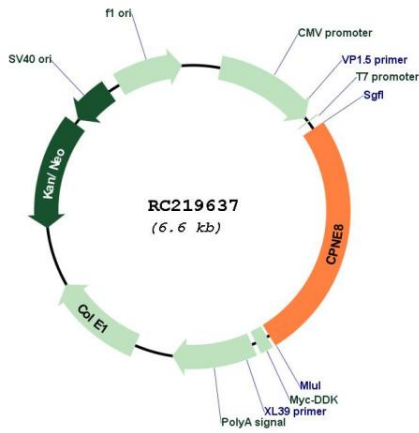
UniProt ID: [Q86YQ8](#)

Cytogenetics: 12q12

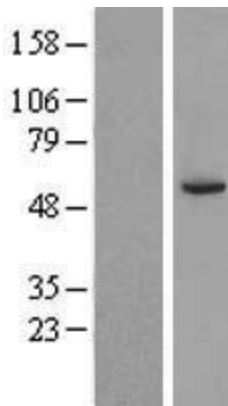
MW: 63.1 kDa

Gene Summary: Calcium-dependent membrane-binding proteins may regulate molecular events at the interface of the cell membrane and cytoplasm. This gene is one of several genes that encode a calcium-dependent protein containing two N-terminal type II C2 domains and an integrin A domain-like sequence in the C-terminus. [provided by RefSeq, Jul 2008]

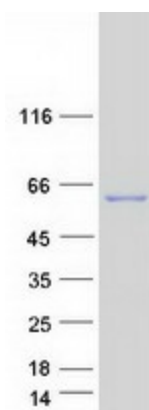
Product images:



Circular map for RC219637



Western blot validation of overexpression lysate (Cat# [LY406995]) using anti-DDK antibody (Cat# [TA50011-100]). Left: Cell lysates from untransfected HEK293T cells; Right: Cell lysates from HEK293T cells transfected with RC219637 using transfection reagent MegaTran 2.0 (Cat# [TT210002]).



Coomassie blue staining of purified CPNE8 protein (Cat# [TP319637]). The protein was produced from HEK293T cells transfected with CPNE8 cDNA clone (Cat# RC219637) using MegaTran 2.0 (Cat# [TT210002]).