

Product datasheet for **RC219636**

TMEM180 (MFSD13A) (NM_024789) Human Tagged ORF Clone

Product data:

| | |
|---------------------------|--|
| Product Type: | Expression Plasmids |
| Product Name: | TMEM180 (MFSD13A) (NM_024789) Human Tagged ORF Clone |
| Tag: | Myc-DDK |
| Symbol: | TMEM180 |
| Synonyms: | bA18I14.8; C10orf77; TMEM180 |
| Mammalian Cell Selection: | Neomycin |
| Vector: | pCMV6-Entry (PS100001) |
| E. coli Selection: | Kanamycin (25 ug/mL) |



[View online »](#)

ORF Nucleotide Sequence:

>RC219636 representing NM_024789
 Red=Cloning site Blue=ORF Green=Tags(s)

TTTTGTAATACGACTCACTATAGGGCGGCCGGAATTCGTCGACTGGATCCGGTACCGAGGAGATCTGCC
 GCC**GCGATCGCC**

ATGGGGCTGGGTACGCCAGGCTGGTTGCTGGGTCTGCCACAGCTGTGGTCTATGGCTCCCTGGCTC
 TCTTACCACCATCTGCACAATGTCTTCTGCTACTATGTGGACACCTTTGTCTCAGGTACAAGAT
 CAACAAAATGGCCTTCTGGGTCGAGAGACAGTGTCTCTCTGGAACAGCCTCAATGACCCTCTCTTC
 GGTTGGCTCAGTGACCGGAGTTCCTCAGCTCCAGCCCCGGTACGGCGCCGGGCTCTCCTCAAGGGCTG
 TGGTGTGGCCCGGTGCAGGCCCTGGGCTGGCATGGGCCGCTGCTGGCGCTGTCGTTCTGGCGTCTG
 GGTGCCCTGGGCCAGCTGGCCTGCAGTTCCTGCTGTGCTGTGCTCTATGATGGTCTCTGACGCTC
 GTGGACCTGCACCACCATGCCTTGTGGCCGACCTGGCCCTCTCAGCCCAGACCCGACCCACCTCACT
 TCTACTGCTCCCTCTCAGCGCGCCGGCTCCCTCTGTCTTTGCATCCTATGCCTTTTGAACAAGGA
 GGATTTCTCTCCTTCCGCGCTTCTGCGTGACTGGCTGTGAGCTCTGGGCTGGGCTTTCTGGGGCC
 ACACAGCTGCTGAGGCGCGGGTTGAGGCGGCCGAAAGGACCCAGGGTCTCAGGCCTGGTTGTGGATA
 GCGGCCTGTGTGGAGAGGAGCTGCTTGTGGCAGTGAGGAGGCGGACAGCATCACCTTGGGCCGGTATCT
 CCGGCAGCTGGCAGCCATCGGAACTTCTGTGGTTCTGTGAGCATGGACCTGGTGCAGGTCTTCCACTGC
 CACTTCAACAGCAACTTCTTCCCTCTTCTGGAGCATCTGTTGTCGACCATATCTCCCTTCCACGG
 GCTCCATCTGTGGGCTCTCCTATGTGCTCCCATCTCAACAACCTTACTTCTGTCCCTGTGCCG
 GCGCTGGGGCTCTACGCGGTGGTGGGGGCTCTTCTGCTCAAGCTGGGACTTAGCCTGCTCATGTTG
 TTGGCCGGCCCGACACCTCAGCCTGCTGTGCTCTTATTGCCAGCAACCGCTTCTACTGAGGGCA
 CCTGTAAGCTGCTGACCTTGGTGGTCACTGACCTGGTAGACGAGGACCTGGTGTGAACCCGAGCA
 GGCAGCCTCGGCACTCCTCTTGGCATGGTTGCCTTGGTGACCAAGCCAGGCCAGACCTTGGCCCGCTG
 CTGGGCACCTGGCTGCTCTGTTTCTACACAGGTATGACCTTCCAGCAGTCCCTCATAACCCCTGTGG
 GGAGTGCCATCCCTGGCCAGAGCCCCAGCTCCAGCCCCTGCACAGGCCCGACGCTCCGCCAGGGCTG
 CTTCTACCTGCTGGTGTGGTGGCCATCACCTGTGCTCTGCTGCAGCTTTCACCTGGTCCAGTTCAGC
 CTGCATGGGAGACGCTGCATGGTCAAGGCCAGCGCCAGAACCTGTACAGGCCAAACCTGGATG
 TTAAGATGGTG

ACGCGTACGCGGCCGCTCGAGCAGAACTCATCTCAGAAGAGGATCTGGCAGCAAATGATATCTGGATT
 ACAAGGATGACGACGATAAGGTTTAA

Protein Sequence:

>RC219636 representing NM_024789
 Red=Cloning site Green=Tags(s)

MGLGQPQAWLLGLPTAVVYVYGLLFTTILHNVFLLYYVDTFVSVYKINKMAFWVGETVFLLWNSLNDPLF
 GWLSDRQFLSSQPRSGAGLSSRAVVLARVQALGWHGPLLALSFLAFWVPWAPAGLQFLCLCLYDGFLL
 YDLHHHALLADLALSAHDRTHLNFYCSLFSAAAGSLSVFASYAFWNKEDFSSFRAFVTLAVSSGLGFLGA
 TQLLRRRVEAARKDPGCSGLVVDSGLCGEELLVGSEEADSI TLGRYLRLARHRNFLWFVSM DLVQVFHC
 HFNSNFFPLFLEHLLSDHISLSTGSILLGLSYVAPHLNLYFLSLCRRWGVYAVVRGLFLLKLGSLMLL
 LAGPDHLSLLCLFIASNRVFTGTCPLLTLVVTDLVDEDLVLRNHRKQAASALLFGMVALVTKPGQTFAPL
 LGTWLLCFYTGHDLFQQSLITPVGSAHPWPEPPAPAPAQAPTLRQGFYLLVLPITCALLQLFTWSQFT
 LHGRRLHMVKAQRQNL SQAQTL DVK MV

TRTRPLEQKLISEEDLAANDILDYKDDDDKV

Chromatograms:

https://cdn.origene.com/chromatograms/mg3523_d01.zip

Restriction Sites:

SgfI-MluI

Cloning Scheme:


ACCN: NM_024789

ORF Size: 1551 bp

OTI Disclaimer: The molecular sequence of this clone aligns with the gene accession number as a point of reference only. However, individual transcript sequences of the same gene can differ through naturally occurring variations (e.g. polymorphisms), each with its own valid existence. This clone is substantially in agreement with the reference, but a complete review of all prevailing variants is recommended prior to use. [More info](#)

OTI Annotation: This clone was engineered to express the complete ORF with an expression tag. Expression varies depending on the nature of the gene.

Components: The ORF clone is ion-exchange column purified and shipped in a 2D barcoded Matrix tube containing 10ug of transfection-ready, dried plasmid DNA (reconstitute with 100 ul of water).

- Reconstitution Method:**
1. Centrifuge at 5,000xg for 5min.
 2. Carefully open the tube and add 100ul of sterile water to dissolve the DNA.
 3. Close the tube and incubate for 10 minutes at room temperature.
 4. Briefly vortex the tube and then do a quick spin (less than 5000xg) to concentrate the liquid at the bottom.
 5. Store the suspended plasmid at -20°C. The DNA is stable for at least one year from date of shipping when stored at -20°C.

Note: Plasmids are not sterile. For experiments where strict sterility is required, filtration with 0.22um filter is required.

RefSeq: [NM_024789.2](#), [NP_079065.2](#)

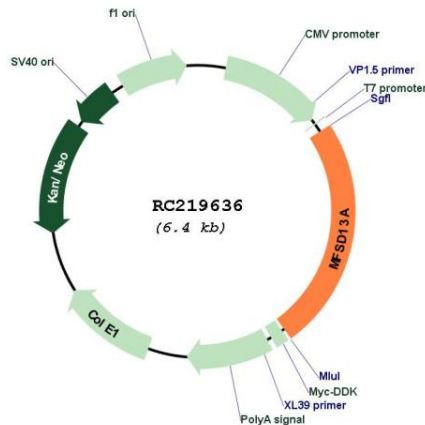
RefSeq Size: 2846 bp

RefSeq ORF: 1554 bp

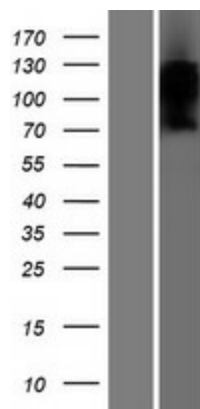
Locus ID: 79847

UniProt ID: Q14CX5
Cytogenetics: 10q24.32
Protein Families: Transmembrane
MW: 57.2 kDa

Product images:



Circular map for RC219636



Western blot validation of overexpression lysate (Cat# [LY411050]) using anti-DDK antibody (Cat# [TA50011-100]). Left: Cell lysates from untransfected HEK293T cells; Right: Cell lysates from HEK293T cells transfected with RC219636 using transfection reagent MegaTran 2.0 (Cat# [TT210002]).