

Product datasheet for **RC219629**

CYLD (NM_015247) Human Tagged ORF Clone

Product data:

Product Type:	Expression Plasmids
Product Name:	CYLD (NM_015247) Human Tagged ORF Clone
Tag:	Myc-DDK
Symbol:	CYLD
Synonyms:	BRSS; CDMT; CYLD1; CYLDI; EAC; FTDALS8; MFT; MFT1; SBS; TEM; USPL2
Mammalian Cell Selection:	Neomycin
Vector:	pCMV6-Entry (PS100001)
E. coli Selection:	Kanamycin (25 ug/mL)



[View online »](#)

ORF Nucleotide
Sequence:

>RC219629 representing NM_015247
 Red=Cloning site Blue=ORF Green=Tags(s)

TTTTGTAATACGACTCACTATAGGGCGGCCGGAATTCGTGACTGGATCCGGTACCGAGGAGATCTGCC
 GCC**CGCATCGCC**

ATGAGTTCAGGCTTATGGAGCCAAGAAAAAGTCACCTTACCCTACTGGGAAGAGCGGATTTTTACTTGC
 TTCTTCAAGAATGCAGCGTTACAGACAAAACAAAACAAAAGCTCCTTAAAGTACCGAAGGGAAGTATAGG
 ACAGTATATTCAAGATCGTTCTGTGGGGCATTCAAGGATTCCTTCTGCAAAAGGCAAGAAAAATCAGATT
 GGATTAATAAATCTAGAGCAACCTCATGCAGTTCTCTTTGTTGATGAAAAGGATGTTGTAGAGATAAATG
 AAAAGTTCACAGAGTTACTTTTGGCAATTACCAATTGTGAGGAGAGGTTACAGCTGTTTAAAAACAGAAA
 CAGACTAAGTAAAGGCCTCCAAATAGACGTGGGCTGTCTGTGAAAGTACAGCTGAGATCTGGGGAAGAA
 AAATTTCTGGAGTTGTACGCTTACAGAGACCCCTGTTAGCAGAGAGGACAGTCTCCGGAATATTCTTTG
 GAGTTGAATTGCTGGAAGAAGGTCGTGGTCAAGGTTTCACTGACGGGGTGTACCAAGGGAACAGCTTTT
 TCAGTGTGATGAAGATTGTGGCGTGTGTTGTCATTGGACAAGCTAGAAGTATAGAAAGTATGACACT
 GCATTGGAAGTATTACGCAGGTCCTGGGGACACAATGCAGGTCGAACTTCTCTTTGGAAATAAAT
 CCAGAGTTTCTTTGAAGTTGGAGAAAACAATAGAATCTGGAACAGTTATATTCTGTGATGTTTTGCCAGG
 AAAAGAAAGCTTAGGATATTTGTTGGTGTGGACATGGATAACCCATTGGCAACTGGGATGGAAGATT
 GATGGAGTGCAGCTTTGTAGTTTTCGTGTGTTGAAAGTACAATTCTATTGCACATCAATGATATCATCC
 CAGCTTATCAGAGAGTGTGACGCAGGAAAGGAGGCTCCCAAATTTGCCTTTATGTCAAGAGGTTGG
 GGCAAAGGTTTCCAGTCATAATAAACCAAAGGCTACAGGATCTACCTCAGACCCTGGAAATAGAAAC
 AGATCTGAATATTTTATACCTTAAATGGTCTTCTGTTGACTCACAACCACAATCCAAATCAAAAAATA
 CATGTTACATTGATGAAGTTGCAGAAGACCTGCAAAATCTCTTACAGAGATATCTACAGACTTTGACCC
 TTCTTACCACCACTCCAGCCTCCTCTGTGAACTCACTGACCACCGAGAACAGATTCCACTCTTACCA
 TTCAGTCTACCAAGATGCCAATACCAATGGAAGTATTGGCCACAGTCCACTTTCTCTGTGAGCCAGT
 CTGTAATGGAAGAGCTAAACACTGCACCCGTCAGAGAGTCCACCCTTGGCCATGCCTCTGGAACTC
 ACATGGTCTAGAAGTGGGCTCATTGGCTGAAGTTAAGGAGAACCCTCCTTTCTATGGGGTAAATCCGTTGG
 ATCGGTGACCCACAGGACTGAATGAAGTGTGCTGACTGGAAGTGAAGATGAGTGTGACGGCTGTA
 CGGATGGAACCTCAGAGGCACTCGGTATTTACCTGTGCCCTGAAGAAGGCGTGTGTTGAAACTGAA
 GAGCTGCAGGCCCTGACTCTAGGTTTGCATCATTGCAGCCGTTTCCAATCAGATTGAGCGCTGTAACCT
 TTAGCATTGGAGGCTACTTAAGTGAAGTGTAGAAAGAAATACTCCACCAAAAAATGAAAAAGAAGGCT
 TGGAGATAATGATTGGGAAGAAGAAAGGATCCAGGGTCAATACAATTCTTGTACTTAGACTCAACCTT
 ATCTGCTTATTTGCTTTTAGTTCTGTTCTGGACACTGTGTTACTTAGACCCAAAGAAAAGAACGATGTA
 GAATATTATAGTGAACCAAGAGCTACTGAGGACAGAAATGTTAATCCTCTGAGAATATATGGATATG
 TGTGTGCCAAAAAATTATGAACTGAGGAAAATACTTGAAGGTTGGAGGCTGCATCAGGATTTACCTC
 TGAAGAAAAAGATCCTGAGGAATTTTGAATATTTCTGTTTCATCATATTTAAGGGTAGAACCTTTGCTA
 AAAATAAGATCAGCAGGTCAAAGGTACAAGATTGTTACTTCTATCAATTTTTATGAAAAAAAATGAGA
 AAGTTGGCGTTCCCAATTCAGCAGTTGTTAGAATGGTCTTTTATCAACAGTAACCTGAAATTTGCAGA
 GGCACCATCATGTCTGATTATTCAGATGCCTCGATTTGAAAAGACTTTAACTATTTAAAAAATTTTT
 CCTTCTGGAATTAATAAACAAGATTTACTTGAAGACACTCCAGACAGTCCCGGATATGTGGAGGGC
 TTGCAATGTATGAGTGTAGAGAATGCTACGACGATCCGGACATCTCAGCTGGAAAAATCAAGCAGTTTTG
 TAAAACCTGCAACACTCAAGTCCACCTTATCCGAAGAGGCTGAATCATAAATAAACCCAGTGTCACTT
 CCCAAAGACTTACCCGACTGGGACTGGAGACACGGCTGCATCCCTTGCCAGAATATGGAGTTATTTGCTG
 TTCTCTGCATAGAAACAAGCCACTATGTTGCTTTTGTGAAGTATGGGAAGGACGATTCTGCCTGGCTCTT
 CTTTGACAGCATGGCCGATCGGGATGGTGGTCAAGATGGCTTCAACATTCCTCAAGTCAACCCATGCCCA
 GAAGTAGGAGAGTACTTGAAGATGTCTGGAAGACCTGCATTCTTGGACTCCAGGAGAATCCAAGGCT
 GTGCACGAAGACTGCTTTGTGATGCATATATGTGCATGTACCAGAGTCCAACAATGAGTTTGTACAAA

ACGCGTACGCGGCCGCTCGAGCAGAACTCATCTCAGAAGAGGATCTGGCAGCAAATGATATCCTGGATT
 ACAAGGATGACGACGATAAGGTTTAA

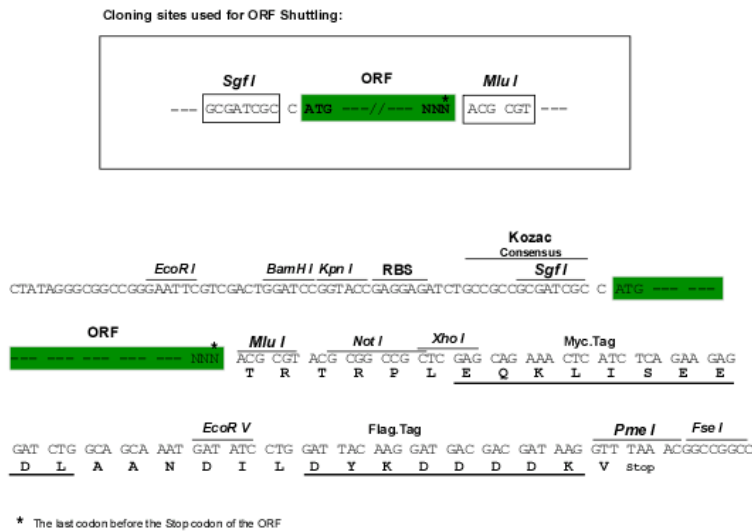
Protein Sequence: >RC219629 representing NM_015247
 Red=Cloning site Green=Tags(s)

MSSGLWSQEKVTSFYWEERIFYLLQLQECVTDKQTKLLKVPKGSIGQYIQDRSVGHSRIPSAKGGKKNQI
 GLKILEQPHAVLFDVDEKDVVEINEKFTELLAITNCEERFSLFKNRNRLSKGLQIDVGCVPKVKQLRS
 GEEKFPGVVRFRGPLLAERTVSGIFFGVELLEEGRGQGFDTGVYQKQLFQCEDEDCGVFVALDKLELIEDDDT
 ALESYAGPGDQMVELPPEINRSVSLKVGETIESGTVIFCDVLPKESLGYFVGVMDMNPIGNWDGRF
 DGVQLCSFACVESTILLHINDIIPALSESVTQERRPKLAFMSRGVGDKGSSSHNPKATGSTSDPGNRN
 RSELYFTLNGSSVDSQPQSKSKNTWYIDEVAEDPAKSLTEISTDFDRSSPPLQPPPVNSLTENRFHSLP
 FSLTKMPNTNGSIGHSPLSLSAQSVMEELNTAPVQESPLAMPNGSHGLEVGS LAEVKENPPFYGVIRW
 IGQPPGLNEVLAGLELEDECAGCTDGTFRGTRYFTCALKKALFVKLKSCRPSRFASLQPVSNQIERCNS
 LAFGGYLSEVVEENTPPKMEKEGLEIMIGKKKGIQGHYNSCYLDSTLFCLFAFSSVLDTVLLRPKEKNDV
 EYYSETQELLRTEIVNPLRIYGYVCATKIMKLRKILEKVEAASGFTSEEKDPPEFLNLFHHILRVEPLL
 KIRSAGQKVQDCYFYQIFMEKNEKVGVPITIQQLLEWSFINSNLKFAEAPSCLIIQMPRFQKDFLKKIF
 PSLELNITDLEDTPRQCRI CGGLAMYECRECYDDPDISAGKIKQFCKTCNTQVHLHPKRLNHNKYNPVSL
 PKDLPDWDWRHGICPCQNMELFAVLCIETSHYVAFVKYKDDSAWLF FDSMADRDGGQNGFNIPQVTPCP
 EVGEYLKMSLEDLHSLDSRRIQGCARRLLCDAYMCMYQSPTMSLYK

TRTRPLEQKLISEEDLAANDILDYKDDDDKV

Restriction Sites: SgfI-MluI

Cloning Scheme:

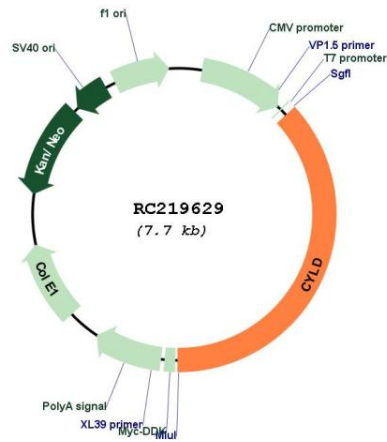


ACCN: NM_015247

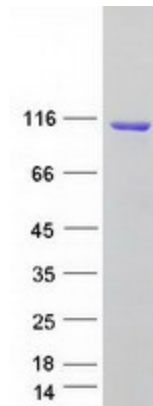
ORF Size: 2868 bp

OTI Disclaimer:	<p>Due to the inherent nature of this plasmid, standard methods to replicate additional amounts of DNA in E. coli are highly likely to result in mutations and/or rearrangements. Therefore, OriGene does not guarantee the capability to replicate this plasmid DNA. Additional amounts of DNA can be purchased from OriGene with batch-specific, full-sequence verification at a reduced cost. Please contact our customer care team at custsupport@origene.com or by calling 301.340.3188 option 3 for pricing and delivery.</p> <p>The molecular sequence of this clone aligns with the gene accession number as a point of reference only. However, individual transcript sequences of the same gene can differ through naturally occurring variations (e.g. polymorphisms), each with its own valid existence. This clone is substantially in agreement with the reference, but a complete review of all prevailing variants is recommended prior to use. More info</p>
OTI Annotation:	<p>This clone was engineered to express the complete ORF with an expression tag. Expression varies depending on the nature of the gene.</p>
Components:	<p>The ORF clone is ion-exchange column purified and shipped in a 2D barcoded Matrix tube containing 10ug of transfection-ready, dried plasmid DNA (reconstitute with 100 ul of water).</p>
Reconstitution Method:	<ol style="list-style-type: none">1. Centrifuge at 5,000xg for 5min.2. Carefully open the tube and add 100ul of sterile water to dissolve the DNA.3. Close the tube and incubate for 10 minutes at room temperature.4. Briefly vortex the tube and then do a quick spin (less than 5000xg) to concentrate the liquid at the bottom.5. Store the suspended plasmid at -20°C. The DNA is stable for at least one year from date of shipping when stored at -20°C.
RefSeq:	NM_015247.3
RefSeq Size:	5371 bp
RefSeq ORF:	2871 bp
Locus ID:	1540
UniProt ID:	Q9NQC7
Cytogenetics:	16q12.1
Domains:	CAP_GLY, UCH
Protein Families:	Druggable Genome
Protein Pathways:	RIG-I-like receptor signaling pathway
MW:	107.1 kDa
Gene Summary:	<p>This gene encodes a cytoplasmic protein with three cytoskeletal-associated protein-glycine-conserved (CAP-GLY) domains that functions as a deubiquitinating enzyme. Mutations in this gene have been associated with cylindromatosis, multiple familial trichoepithelioma, and Brooke-Spiegler syndrome. Alternate transcriptional splice variants, encoding different isoforms, have been characterized. [provided by RefSeq, Jul 2008]</p>

Product images:



Circular map for RC219629



Coomassie blue staining of purified CYLD protein (Cat# [TP319629]). The protein was produced from HEK293T cells transfected with CYLD cDNA clone (Cat# RC219629) using MegaTran 2.0 (Cat# [TT210002]).