

Product datasheet for RC219623

CDK15 (NM_139158) Human Tagged ORF Clone

Product data:

Product Type:	Expression Plasmids
Product Name:	CDK15 (NM_139158) Human Tagged ORF Clone
Tag:	Myc-DDK
Symbol:	CDK15
Synonyms:	ALS2CR7; PFTAIRE2; PFTK2
Mammalian Cell Selection:	Neomycin
Vector:	pCMV6-Entry (PS100001)
E. coli Selection:	Kanamycin (25 ug/mL)
ORF Nucleotide Sequence:	>RC219623 representing NM_139158 Red=Cloning site Blue=ORF Green=Tags(s)

TTTTGTAATACGACTCACTATAGGGCGCCGGGAATTCGTCGACTGGATCCGGTACCGAGGAGATCTGCC
GCC**CGATCGC**C

ATGACTTCATTTACCCAGGGGACTTCAAGCTGCCCGTCCCGAGAAGTTCAAGAGTAAAAGGCCACGGA
GTAACAGTGATTGTTTTAGGAAGAGGATCTGAGGCAGGGTTTTAGTGGAGGAAGAGCCTCCCTTTTGG
GGCAGCCTCATCTTACTTGAAGTGGAGAAGCTGGGTGAAGGCTTTATGCGACAGTTTACAAGGGGATT
AGCAGAATAAATGGACAAGTGGCTTTAAAAGTCATCAGCATGAATGCAGAGGAAGGAGTCCCATTTA
CAGCTATCCGAGAAGCTTCTCTCTGAAGGGTTTAAAACATGCCAATATTGTGCTCCTGCATGACATAAT
CCACACCAAAGAGACACTGACATTGTTTTGAATACATGCACACAGACCTGGCCAGTATATGTCTCAG
CATCCAGGAGGGCTTCATCCTCATAATGTCAGACTTTTTCATGTTTCAACTTTTGGGGCCCTGGCGTACA
TCCACCACCAACAGTTCCTTACAGGGACCTGAAACCTCAGAAGTACTCATCAGTACCTGGGAGAGCT
CAAAGTGGCTGATTTTGGTCTTGGCCCGGCAAGTCCATCCAGCCAGACATACTTTCAGAAGTCGTG
ACCCTCTGGTACCGGCCCTGATGCTTTGCTGGGAGCCACTGAATTCCTCTGAGCTGGACATATGGG
GTGCAGGCTGCATCTTTATTGAAATGTTCCAGGGTCAACCTTTGTTTCTGGGGTTTCAACATCCTTGA
ACAGCTGGAGAAAATCTGGGAGGTGCTGGGAGTCCCTACAGAGGATACTGGCCGGGAGTCTCCAAGCTA
CCTAACAATCCAGAATGGTCCCAGTGCCTACGCTCGAAGCCTTCATGTTGCTGGAAACAGGCTGG
GCAGGGTTCCTGAAGCTGAAGACCTGGCTCCAGATGCTAAAAGGCTTTCCAGAGACCGGCTCTCCGC
CCAGGAAGCACTTGTTCATGATTATTTAGCGCCCTGCCATCTCAGCTGTACCAGCTTCTGATGAGGAG
TCTTTGTTACAGTTTACAGGAGTGGGCTAAAGCCAGAAATGTGTGACCTTTTGGCTCCTACCAGAAAG
GTCACCACCCAGCCAGTTTAGCAAATGCTGG

ACGCGTACGCGGCCGCTCGAGCAGAAACTCATCTCAGAAGAGGATCTGGCAGCAAATGATATCCTGGATT
ACAAGGATGACGACGATAAGGTTTAA



[View online >](#)

Protein Sequence: >RC219623 representing NM_139158
Red=Cloning site Green=Tags(s)

MTSFHPRGLQAARAQKFKSKRPRSNSDCFQEEDLRQGFQWRKSLPFGAASSYLNLEKLGEGSYATVYKGI
 SRINGQLVALKVISMNAEEGVPFTAIREASLLKGLKHANIVLLHDIHTKETLTFVFEYMHTDLAQYMSQ
 HPGGLHPHNVRLFMFQLLRGLAYIHHQHVLHRDLKPQNLLISHLGELKLADFGLARAKSIPSQTYSSV
 TLWYRPPDALLGATEYSSELDIWGAGCIF IEMFQGQPLFPGVSNILEQLEKIWEVLGVPTEDTWPQVSKL
 PNYNPEWFPLPTPRSLHVWNRLGRVPEADLASQMLKGFPRDRVSAQEALVHDYFSAQPSQLYQLPDEE
 SLFTVSGVRLKPEMCDLLASYQKGHHPAQFSKCW

TRTRPLEQKLISEEDLAANDILDYKDDDDKV

Chromatograms: https://cdn.origene.com/chromatograms/mg4105_d02.zip

Restriction Sites: SgfI-MluI

Cloning Scheme:



* The last codon before the Stop codon of the ORF

ACCN: NM_139158

ORF Size: 1152 bp

OTI Disclaimer: The molecular sequence of this clone aligns with the gene accession number as a point of reference only. However, individual transcript sequences of the same gene can differ through naturally occurring variations (e.g. polymorphisms), each with its own valid existence. This clone is substantially in agreement with the reference, but a complete review of all prevailing variants is recommended prior to use. [More info](#)

OTI Annotation: This clone was engineered to express the complete ORF with an expression tag. Expression varies depending on the nature of the gene.

Components: The ORF clone is ion-exchange column purified and shipped in a 2D barcoded Matrix tube containing 10ug of transfection-ready, dried plasmid DNA (reconstitute with 100 ul of water).

Reconstitution Method:

1. Centrifuge at 5,000xg for 5min.
2. Carefully open the tube and add 100ul of sterile water to dissolve the DNA.
3. Close the tube and incubate for 10 minutes at room temperature.
4. Briefly vortex the tube and then do a quick spin (less than 5000xg) to concentrate the liquid at the bottom.
5. Store the suspended plasmid at -20°C. The DNA is stable for at least one year from date of shipping when stored at -20°C.

RefSeq: [NM_139158.2](#)

RefSeq Size: 1534 bp

RefSeq ORF: 1155 bp

Locus ID: 65061

UniProt ID: [Q96Q40](#)

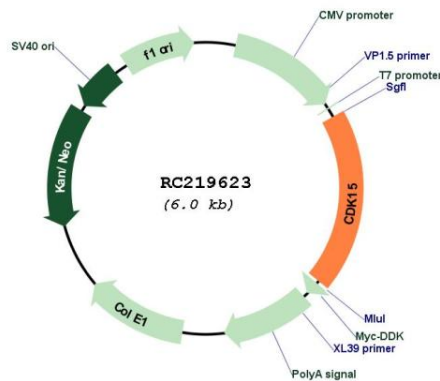
Cytogenetics: 2q33.1

Protein Families: Druggable Genome, Protein Kinase

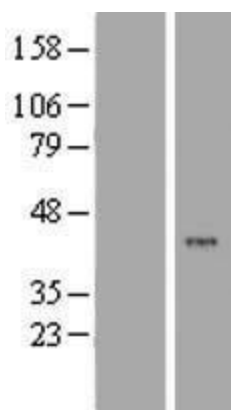
MW: 43.4 kDa

Gene Summary: Serine/threonine-protein kinase that acts like an antiapoptotic protein that counters TRAIL/TNFSF10-induced apoptosis by inducing phosphorylation of BIRC5 at 'Thr-34'. [UniProtKB/Swiss-Prot Function]

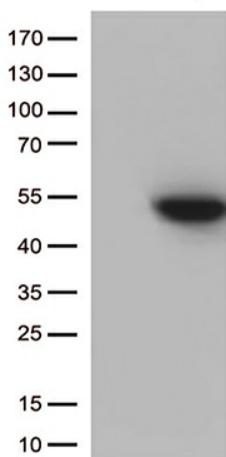
Product images:



Circular map for RC219623



Western blot validation of overexpression lysate (Cat# [LY408389]) using anti-DDK antibody (Cat# [TA50011-100]). Left: Cell lysates from untransfected HEK293T cells; Right: Cell lysates from HEK293T cells transfected with RC219623 using transfection reagent MegaTran 2.0 (Cat# [TT210002]).



HEK293T cells were transfected with the pCMV6-ENTRY control (Cat# [PS100001], Left lane) or pCMV6-ENTRY CDK15 (Cat# RC219623, Right lane) cDNA for 48 hrs and lysed. Equivalent amounts of cell lysates (5 ug per lane) were separated by SDS-PAGE and immunoblotted with anti-CDK15 (Cat# [TA811934])(1:500).