

Product datasheet for **RC219617**

ILF3 (NM_153464) Human Tagged ORF Clone

Product data:

Product Type:	Expression Plasmids
Product Name:	ILF3 (NM_153464) Human Tagged ORF Clone
Tag:	Myc-DDK
Symbol:	ILF3
Synonyms:	CBTF; DRBF; DRBP76; MMP4; MPHOSPH4; MPP4; MPP4110; NF-AT-90; NF90; NF90a; NF90b; NF90c; NF90ctv; NF110; NF110b; NFAR; NFAR-1; NFAR-2; NFAR2; NFAR90; NFAR110; TCP80; TCP110
Mammalian Cell Selection:	Neomycin
Vector:	pCMV6-Entry (PS100001)
E. coli Selection:	Kanamycin (25 ug/mL)



[View online »](#)

ORF Nucleotide Sequence:

>RC219617 representing NM_153464
 Red=Cloning site Blue=ORF Green=Tags(s)

TTTTGTAATACGACTCACTATAGGGCGGCCGGAATTCGTCGACTGGATCCGGTACCGAGGAGATCTGCC
 GCC**CGCATCGCC**

ATGCGTCCAATGCGAATTTTTGTGAATGATGACCGCCATGTGATGGCAAAGCATTCTTCGTTTATCCAA
 CACAAGAGGAGCTGGAGGCAGTCCAGAACATGGTGTCCCACACGAGCGGGCGCTCAAAGCTGTGTCCGA
 CTGGATAGACGAGCAGGAAAAGGGTAGCAGCGAGCAGGCAGAGTCCGATAACATGGATGTCCCCAGAG
 GACGACAGTAAAGAAGGGGCTGGGGAACAGAAGACGGAGCACATGACCAGAACCCTGCGGGGAGTGATGC
 GGGTGGGCTGGTGGCAAAGGGCTCCTACTCAAGGGGACTTGGATCTGGAGCTGGTGTCTGTGTAA
 GGAGAAGCCACAACCGCCCTCTGGACAAGGTGGCCGACAACCTGGCCATCCAGCTTGTGCTGTAAACA
 GAAGACAAGTACGAAATACTGCAATCTGTGACGATGCTGCGATTGTGATAAAAAACACAAAAGAGCCTC
 CATTGTCCCTGACCATCCACCTGACATCCCTGTTGTGACAGAGAAGAAATGGAGAAAGTATTAGCTGGAGA
 AACGCTATCAGTCAACGACCCCCGGACGTTCTGGACAGGCAGAAATGCCTTGTGCCTTGGCGTCCCTC
 CGACACGCCAAGTGGTTCAGGCCAGAGCCAACGGGCTGAAGTCTTGTGTCATTGTGATCCGGGTCTTGA
 GGGACCTGTGCACTCGCGTGCACCTGGGGTCCCTCCGAGGCTGGCCTCTCGAGCTCCTGTGTGAGAA
 ATCCATTGGCACGGCCAACAGACCGATGGGTGCTGGCAGGCCCTGCGGAGAGTGTGGAGTGCCTGGCG
 TCGGGCATCGTGATGCCAGATGGTCTGGCATTATGACCCTTGTGAAAAAGAAGCCACTGATGCTATTG
 GGCATCTAGACAGACAGCAACGGGAAGATATCACACAGAGTGCAGCAGCAGCACTGCGGCTCGCTGCCTT
 CGGCCAGCTCCATAAAGTCTAGGCATGGACCTCTGCCTTCCAAGATGCCAAGAAACCAAGAATGAA
 AACCCAGTGGACTACACCGTTGAGTCCCAAGCACCACCTATGCCATTACGCCATGAAACGCCCAA
 TGGAGGAGGCGGGGAGGAGAAGTCCGCCAGAAAAAGAAGAAGATTGAGAAGAAAGAGGAGAAGGC
 AGAGCCCCCAGGCTATGAATGCCCTGATGCGGTTGAACCAGCTGAAGCCAGGGCTGCAGTACAAGCTG
 GTGTCCCAGACTGGGCCGTCATGCCCCATCTTTACCATGTCTGTGGAGTTGATGGCAATTCATTTCG
 AGGCCTCTGGGCCTCCAAAAAGACGGCCAAGCTGCACGTGGCCGTTAAGGTGTTACAGGACATGGGCTT
 GCCGACGGGTGCTGAAGGCAGGGACTCGAGCAAGGGGGAGGACTCGGCTGAGGAGACCGAGGCGAAGCCA
 GCAGTGGTGGCCCTGCCCAAGTGGTAGAAGCTGTCTCCACCCCTAGTGCAGGCTTTCCTCAGATGCCA
 CTGCCGAGCAGGGCCGATCCTGACAAAGCACGGCAAGAACCAGTCATGGAGCTGAACGAGAAGAGGCG
 TGGGCTCAAGTACGAGCTCATCTCCGAGACCGGGGCAGCCACGACAAGCGCTTCGTGATGGAGGTCGAA
 GTGGATGGACAGAAGTTCCAAGGTGCTGGTTCCAACAAAAGGTGGCGAAGGCCTACGCTGCTTGTCTG
 CCCTAGAAAAGCTTTTCCCTGACACCCCTCTCGCCCTTGATGCCAACAAAAGAAGAGAGCCCCAGTACC
 CGTCAGAGGGGGACCGAAATTTGCTGCTAAGCCACATAACCCTGGCTTCGGCATGGGAGGCCCATGCAC
 AACGAAGTCCCCCACCCTTCGAGGGCGGGGAAGAGCGGGGAGCATCCGGGGACGAGGGCGCG
 GGCGAGGATTTGGTGGCGCAACCATGGAGGCTACATGAATGCCGGTGTGGGTATGGAAGCTATGGGTA
 CGGAGGCAACTCGGCGACAGCAGGCTACACAGTTTTTGTAA

ACGCGTACGCGGGCGCTCGAGCAGAACTCATCTCAGAAGAGGATCTGGCAGCAAATGATATCCTGGATT
 ACAAGGATGACGACGATAAGGTTTAA

Protein Sequence: >RC219617 representing NM_153464
 Red=Cloning site Green=Tags(s)

```
MRP M R I F V N D D R H V M A K H S S V Y P T Q E E L E A V Q N M V S H T E R A L K A V S D W I D E Q E K G S S E Q A E S D N M D V P P E
D D S K E G A G E Q K T E H M T R T L R G V M R V G L V A K G L L L K G D L D L E L V L L C K E K P T T A L L D K V A D N L A I Q L A A V T
E D K Y E I L Q S V D D A A I V I K N T K E P P L S L T I H L T S P V V R E E M E K V L A G E T L S V N D P P D V L D R Q K L A A L A S L
R H A K W F Q A R A N G L K S C V I V I R V L R D L C T R V P T W G P L R G W P L E L L C E K S I G T A N R P M G A G E A L R R V L E C L A
S G I V M P D G S G I Y D P C E K E A T D A I G H L D R Q R E D I T Q S A Q H A L R L A A F G Q L H K V L G M D P L P S K M P K P K N E
N P V D Y T V Q I P P S T T Y A I T P M K R P M E E D G E E K S P S K K K K I Q K K E E K A E P P Q A M N A L M R L N Q L K P G L Q Y K L
V S Q T G P V H A P I F T M S V E V D G N S F E A S G P S K K T A K L H V A V K V L Q D M G L P T G A E G R D S S K G E D S A E E T E A K P
A V V A P A P V V E A V S T P S A A F P S D A T A E Q G P I L T K H G K N P V M E L N E K R R G L K Y E L I S E T G G S H D K R F V M E V E
V D G Q K F Q G A G S N K K V A K A Y A A L A E K L F P D T P L A L D A N K K K R A P V P V R G G P K F A A K P H N P G F G M G G P M H
N E V P P P P N L R G R G R G S I R G R G R G R G F G G A N H G G Y M N A G A G Y G S Y G Y G G N S A T A G Y T G F V
```

TRTRPLEQKLISEEDLAANDILDYKDDDDKV

Chromatograms: https://cdn.origene.com/chromatograms/mk8073_b02.zip

Restriction Sites: SgfI-MluI

Cloning Scheme:



ACCN: NM_153464

ORF Size: 2070 bp

OTI Disclaimer: The molecular sequence of this clone aligns with the gene accession number as a point of reference only. However, individual transcript sequences of the same gene can differ through naturally occurring variations (e.g. polymorphisms), each with its own valid existence. This clone is substantially in agreement with the reference, but a complete review of all prevailing variants is recommended prior to use. [More info](#)

OTI Annotation: This clone was engineered to express the complete ORF with an expression tag. Expression varies depending on the nature of the gene.

Components: The ORF clone is ion-exchange column purified and shipped in a 2D barcoded Matrix tube containing 10ug of transfection-ready, dried plasmid DNA (reconstitute with 100 ul of water).

Reconstitution Method:

1. Centrifuge at 5,000xg for 5min.
2. Carefully open the tube and add 100ul of sterile water to dissolve the DNA.
3. Close the tube and incubate for 10 minutes at room temperature.
4. Briefly vortex the tube and then do a quick spin (less than 5000xg) to concentrate the liquid at the bottom.
5. Store the suspended plasmid at -20°C. The DNA is stable for at least one year from date of shipping when stored at -20°C.

RefSeq: [NM_153464.3](#)

RefSeq Size: 3234 bp

RefSeq ORF: 2073 bp

Locus ID: 3609

UniProt ID: [Q12906](#)

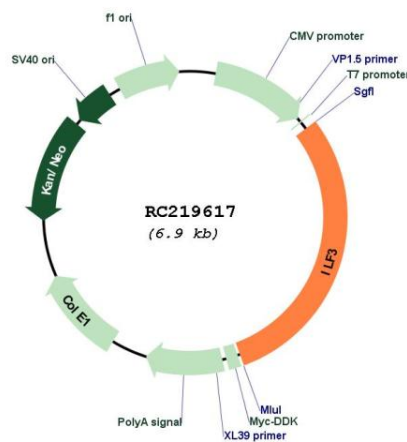
Cytogenetics: 19p13.2

Protein Families: Druggable Genome, Transcription Factors

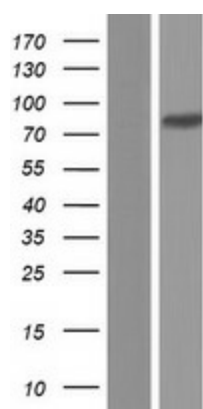
MW: 74.4 kDa

Gene Summary: This gene encodes a double-stranded RNA (dsRNA) binding protein that complexes with other proteins, dsRNAs, small noncoding RNAs, and mRNAs to regulate gene expression and stabilize mRNAs. This protein (NF90, ILF3) forms a heterodimer with a 45 kDa transcription factor (NF45, ILF2) required for T-cell expression of interleukin 2. This complex has been shown to affect the redistribution of nuclear mRNA to the cytoplasm. Knockdown of NF45 or NF90 protein retards cell growth, possibly by inhibition of mRNA stabilization. In contrast, an isoform (NF110) of this gene that is predominantly restricted to the nucleus has only minor effects on cell growth when its levels are reduced. Alternative splicing results in multiple transcript variants encoding distinct isoforms.[provided by RefSeq, Dec 2014]

Product images:



Circular map for RC219617



Western blot validation of overexpression lysate (Cat# [LY407042]) using anti-DDK antibody (Cat# [TA50011-100]). Left: Cell lysates from untransfected HEK293T cells; Right: Cell lysates from HEK293T cells transfected with RC219617 using transfection reagent MegaTran 2.0 (Cat# [TT210002]).