

Product datasheet for RC219615

A2ML1 (NM_144670) Human Tagged ORF Clone

Product data:

Product Type:	Expression Plasmids
Product Name:	A2ML1 (NM_144670) Human Tagged ORF Clone
Tag:	Myc-DDK
Symbol:	A2ML1
Synonyms:	CPAMD9; OMS; p170
Mammalian Cell Selection:	Neomycin
Vector:	pCMV6-Entry (PS100001)
E. coli Selection:	Kanamycin (25 ug/mL)
ORF Nucleotide Sequence:	>RC219615 representing NM_144670 Red=Cloning site Blue=ORF Green=Tags(s)

TTTTGTAATACGACTCACTATAGGGCGGCCGGAATTCGTCGACTGGATCCGGTACCGAGGAGATCTGCC
GCC**CGATCGCC**

ATGTGGGCTCAGCTCCTTCTAGGAATGTTGGCCCTATCACCAGCCATTGCAGAAGAACTCCAACTACC
TGGTGACATTACCAGCCCGGCTAAATTTCCCTCCGTTCCAGAAGGTTTGGTGGACCTGAGCCCTGGGTA
CAGTGATGTTAAATTCACGGTACTCTGGAGACCAAGGACAAGACCCAGAAGTTGCTAGAATACTCTGGA
CTGAAGAAGAGGCACTTACATTGTATCTCTTTCTGTACCACCTCTGCTGGTGGCACAGAAGAAGTGG
CCACAATCCGGGTGTCGGGAGTTGGAAATAACATCAGCTTTGAGGAGAAGAAAAAGTTCTAATTCAGAG
GCAGGGGAACGGCACCTTTGTACAGACTGACAAACCTCTCTACACCCAGGGCAGCAAGTGTATTTCCGC
ATTGTCACCATGGATAGCAACTTCGTTCCAGTGAATGACAAGTACTCCATGGTGGAACTACAGGATCCAA
ATAGCAACAGGATTGCACAGTGGCTGGAAGTGGTACCTGAGCAAGGCATTGTAGACCTGTCTTCCAAC
GGCACCAGAGGCAATGCTGGGCACCTACACTGTGGCAGTGGCTGAGGGCAAGACCTTTGGTACTTTCAGT
GTGGAGGAATATGTGCTGCCAAGTTTAAAGTGGAAAGTGGTGGAAACCAAGGAGTTATCAACGGTGCAGG
AATCTTCTTAGTAAAAATTTGTTGTAGGTACACCTATGGAAAGCCATGCTAGGGGCAGTGCAGGTATC
TGTGTGTCAGAAGGCAAATACTTACTGGTATCGAGAGGTGGAACGGGAACAGCTTCTGACAAATGCAGG
AACCTCTCTGGACAGACTGACAAAACAGGATGTTTCTCAGCACCTGTGGACATGGCCACCTTTGACCTCA
TTGGATATGCGTACAGCCATCAAATCAATATTGTGGCTACTGTTGTGGAGGAAGGACAGGTGTGGAGGC
CAATGCCACTCAGAATATCTACATTTCTCCACAAATGGGATCAATGACCTTTGAAGACACCAGCAATTTT
TACCATCCAAATTTCCCTTCAGTGGGAAGATAAGAGTTAGGGGCCATGATGACTCCTTCTCAAGAACC
ATCTAGTGTCTTGGTATTATGGCACAAATGGAACCTTCAACCAGACCCTGGTACTGATAACAATGG
CCTAGCTCCCTTACCTTGGAGACATCCGGTTGGAATGGGACAGACGTTTCTCTGGAGGGAAAGTTTCAA
ATGGAAGACTTAGTATATAATCCGGAACAAGTCCACGTTACTACAAAATGCCTACCTGCACCTGCGAC
CCTTCTACAGCACAAACCCGACGTTCTTGGCATCCACCGGCTAAACGGCCCTTGAATGTGGCCAGCC
CCAGGAAGTGTGGTATTATTACATCGACCCGCGCATGCAAGCCCTGACCAAGAGATCAGCTTCTCC



TACTATTTAATAGGGAAAGGAAGTTTGGTGATGGAGGGGCGAGAAACACCTGAACTCTAAGAAGAAAGGAC
TGAAAGCCTCCTTCTCTCTCACTGACCTTCACTTCGAGACTGGCCCTGATCCTTCCCTGGTGATCTA
TGCCATTTTTCCAGTGGAGGTGTTGTAGCTGACAAAATTCAGTTCTCAGTCGAGATGTGCTTTGACAAT
CAGGTTTCCCTTGGCTTCTCCCTCCCAGCAGCTTCCAGGAGCAGAAGTGGAGCTGCAGCTGCAGGCAG
CTCCCGGATCCCTGTGTGCGCTCCGGGCGGTGGATGAGAGTGTCTTACTGCTTAGGCCAGACAGAGAGCT
GAGCAACCGCTCTGTCTATGGGATGTTTCCATTCTGGTATGGTCACTACCCCTATCAAGTGGCTGAGTAT
GATCAGTGTCCAGTGTCTGGCCATGGGACTTTCCTCAGCCCTCATTGACCCAATGCCCAAGGGCATT
CGAGCCAGCGTTCATTATCTGGAGGCCCTCGTTCTCTGAAGGCACGGACCTTTTCAGCTTTTTCCGGGA
CGTGGGCCTGAAAATACTGTCCAATGCCAAAATCAAGAAGCCAGTAGATTGCAGTCACAGATCTCCAGAA
TACAGCACTGCTATGGGTGCAGGCGGTGGTCATCCAGAGGCTTTTGGTCACTCAACTCCTTTACATCAAG
CAGAGGATTCTCAGTCCGCCAGTACTTCCAGAGACCTGGCTCTGGGATCTGTTTCTATTGGTAACTC
GGGGAAGGAGGCGGTCCACGTCACAGTTCCTGACGCCATCACCGAGTGGAAAGGCGATGAGTTTCTGCACT
TCCAGTCAAGAGGCTTCGGGCTTTCACCCACTGTTGGACTAACTGCTTTCAGCCGTTCTTTGTTGACC
TGACTCTCCCTTACTCAGTAGTCCGTGGGAATCCTTTCGTCTTACTGCCACCATCTTCAATTACCTAAA
GGATTGCATCAGGTTCCAGACTGACCTGGCTAAATCGCATGAGTACCAGCTAGAATCATGGGCAGATTCT
CAGACCTCCAGTTGTCTCTGTGCTGATGAAGCAAAAACCCACCCTGGAACATCAGAGCTGTCAAATGG
GTCACATTAACCTTACTATTAGTACAAAGATTCTGGACAGCAATGAACCATGTGGGGGCCAGAAGGGTT
TGTTCCCAAAAAGGGCCGAAGTGACACGCTCATCAAGCCAGTTCTCGTCAAACCTGAGGGAGTCTGGTG
GAGAAGACACACAGCTCATTGCTGTGCCAAAAGGAAAGTGGCATCTGAATCTGTCTCCCTGGAGCTCC
CAGTGGACATTGTTCTGACTCGACCAAGGCTTATGTTACGGTCTGGGAGACATTATGGGCACAGCCCT
GCAGAACCTGGATGGTCTGGTGCAGATGCCAGTGGCTGTGGCGAGCAGAACATGGTCTTGTGTTGCTCCC
ATCATCTATGCTTGCAGTACCTGGAGAAGGCAGGGCTGCTGACGGAGGAGATCAGGCTCGGGCAGTGG
GTTTCTGGAAAATAGGGTACCAGAAGGAGCTGATGTACAAAACACAGCAATGGCTCATACAGTGCCTTGG
GGAGCGAGATGGAAATGGAAACACATGGCTGACAGCGTTTGTACAAAATGCTTTGGCCAAGCTCAGAAA
TTCATCTTCATTGATCCCAAGAACATCCAGGATGCTCTCAAGTGGATGGCAGGAAACCAGCTCCCCAGTG
GCTGCTATGCCAACGTGGGAAAATCTCCTTACACAGCTATGAAGGGTGGTGTGATGATGAGGTCTCCTT
GACTGCGTATGTCACAGCTGCATTGCTGGAGATGGGAAAGGATGTAGATGACCCAATGGTGGTCAAGGT
CTACGGTGTCTCAAGAATTCGGCCACCTCCACGACCAACCTCTACACACAGGCCCTGTTGGCTTACATTT
TCTCCCTGGCTGGGAAAATGGACATCAGAAACATTCTCCTTAAACAGTTAGATCAACAGGCTATCATCTC
AGGAGAATCCATTTACTGGAGCCAGAAACCTACTCCATCATCGAACGCCAGCCCTTGGTCTGAGCCTGCG
GCTGTAGATGTGGAACACACAGCATATGCATTGTTGGCCAGCTTACCAAGCCCAGCCTGACTCAAAGG
AGATAGCGAAGGCCACTAGCATAGTGGCTTGGTTGGCCAAGCAACGCAATGCATATGGGGCTTCTCTTC
TACTCAGGATACTGTAGTTGCTCTCAAGCTCTTGCCAAATATGCCACTACCGCCTACATGCCATCTGAG
GAGATCAACCTGGTTGTAATAATCCACTGAGAAATTTCCAGCGCACATTCACATACAGTCAAGTAAACAGAT
TGGTATTTCCAGCAGGATACCCCTGCCAATGTCCCTGGAATGTACACGTTGGAGGCCTCAGGCCAGGGCTG
TGTCTATGTGCAGACGGTGTGAGATACAATATCTCCCTCCCACAAATATGAAGACCTTGTGCTTAGT
GTGAAAATAGGAAAAGCTAGATGTGAGCAACCGACTTACCTCGATCCTTACTCTCACTATTACACCA
CATGGAGGGCACCAATCAGTACTTCTCCAGCAACCCCTGGTGAAGAAGTTGAATTTGGAAGTACACACA
CTTAACATTTACTTGGATGAGCTCATTAAAGAACACTCAGACTTACACCTTACCATCAGCCAAAGTGTGC
TGGTACCAACTTGAAACCAGCAACCATCAAGGTCTATGACTACTACCTACCAGATGAACAGGCAACAAT
TCAGTATTCTGATCCCTGTGAA

ACGCGTACGCGGCCGCTCGAGCAGAAACTCATCTCAGAAGAGGATCTGGCAGCAATGATATCCTGGATT
ACAAGGATGACGACGATAAGGTTTAA

Protein Sequence: >RC219615 representing NM_144670
 Red=Cloning site Green=Tags(s)

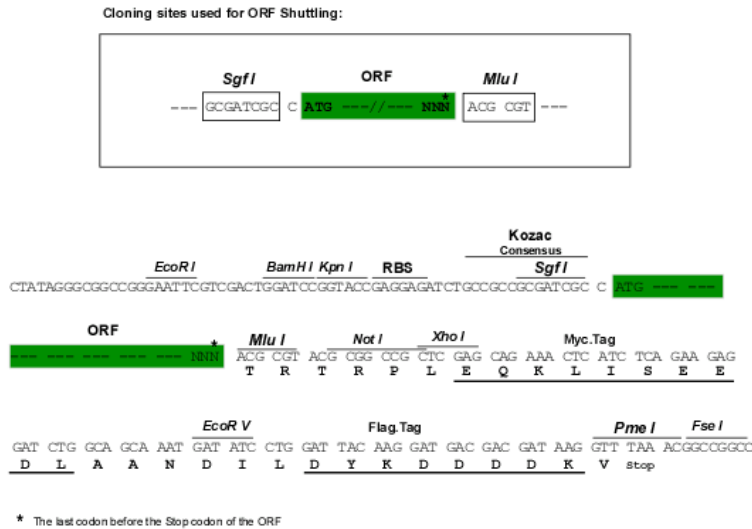
MWAQLLLGMLALSPAIAEELPNYLVTLPARLNFPVSQKVCLDLSPGYSDVKFTVTLETDKDKTQKLLIYSG
 LKKRHLHCISFLVPPAGGTEEVATIRVSGVGNISFEKKKVL IQRQNGTFVQTDKPL YTPGQQVYFR
 IVTMSNFVPVNDKYSMVELQDPNSNRIAQWLEVVPEQGI VDL SFQLAPEAMLGTYTVAVAEGKTFGTFS
 VEEYVLPKFKVEVVEPKELSTVQESFLVKICCRYTYGK PMLGAVQVSVQCKANTYVYREVEREQLPDKCR
 NLSGQTDKTGCF SAPVDMATFDLIGYAYSHQINIVATVVEEGTGV EANATQNIYI SPQMGSMTFEDTSNF
 YHPNPFPSGKIRVRGHDDSF LKNHLVFLVIYGTNGTFNQT LVTDNNGLAPFTLETSGWNGTDVSLGKFKQ
 MEDLVYNPEQVPRYYQ NAYLHLRPFYSTTRSF LGIHRLNGPLKCGQPQEVLDVYYIDPADASPDQEI SFS
 YYLIGKGSVMGQKHLNSKKKGLKASFSLSLTFTSRLAPDPSLVIY AIFPSGGVVADKIQFSVEMCFDN
 QVSLGFSPSQQLPGA EVELQLQAAPGSLCALRAVDES VLLL RPDREL SNRSVYGMFPF WYGHYPYQVAEY
 DQCPVSGPWDFPQPLIDPMPQGHSSQRSIIWRPSF SEGTDLFSFRDVG LKILSNAKIKKPVDCSHRSPE
 YSTAMGAGGGHPEAFESSTPLHQAEDSQVRQYFPETWLDL FPIGNSGKEAVHVTVPDAITEWKAMSFCT
 SQSRGFGLSPTVGLTAFKPFVVDL TLPYSVVRGESFRLTATIFNYL KDCIRVQTDLAKSHEYQLESWADS
 QTSSCLCADEAKTHHWNITAVKLGHINFITISKILDSNEPCGGQKGFVPQKGRSDTLIKPVLVKEPGLV
 EKTHSSLLCPKGVASESVSLELPVDIVPDSTKAYVTVLGDIMGTALQNL DGLVQMPSGCGEQNMVLFAP
 IYVYLQYLEKAGLLTEEIRSRVGFLEIGYQKELMYKHSNGS YSAFGERDNGNTWLTAFTKCFGQAQK
 FIFIDPKNIQDALKWMAGNQLPSGCYANVGNLLHTAMKGGVDDE VSLTAYVTAALLEMGKD VDDPMVSQG
 LRCLKNSATSTTNLYTQALLAYIFSLAGEMDIRNILLKQLDQQA IISGESIYWSQKPTPSSNASPWSEPA
 AVDVELTAYALLAQLTKPSLTQKEIAKATSIVAWLAKQRNAYGGF SSTQDTVVALQALAKYATTAYMPSE
 EINLVVKSTENFQRTFNIQSVNRLFVQD TLPNVPGMYTLEASGQGC VYVQTVLRYNILPPTNMKTF SLS
 VEIGKARCEQPTSPRSLTLTIHTSYVGSRSSNMAIVEVKMLSGFSPMEGTNQLLLQQPLVKKVEFGTDT
 LNIYLDLDELKNTQTYTFTISQSVLVTNLKPATIKVYDYLPDEQATI QYSDPCE

TRTRPLEQKLISEEDLAANDILDYKDDDDKV

Chromatograms: https://cdn.origene.com/chromatograms/mk8019_e08.zip

Restriction Sites: SgfI-MluI

Cloning Scheme:

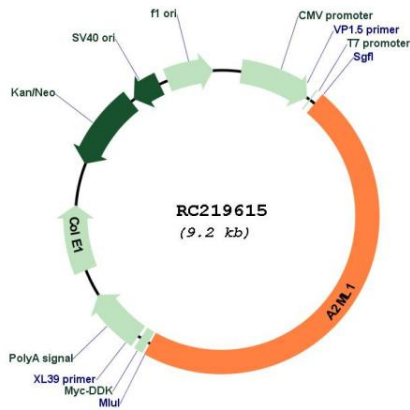


ACCN: NM_144670

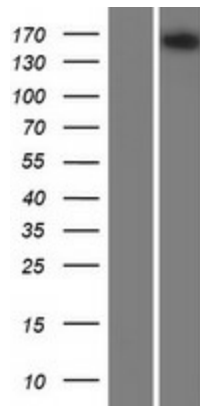
ORF Size: 4362 bp

OTI Disclaimer:	The molecular sequence of this clone aligns with the gene accession number as a point of reference only. However, individual transcript sequences of the same gene can differ through naturally occurring variations (e.g. polymorphisms), each with its own valid existence. This clone is substantially in agreement with the reference, but a complete review of all prevailing variants is recommended prior to use. More info
OTI Annotation:	This clone was engineered to express the complete ORF with an expression tag. Expression varies depending on the nature of the gene.
Components:	The ORF clone is ion-exchange column purified and shipped in a 2D barcoded Matrix tube containing 10ug of transfection-ready, dried plasmid DNA (reconstitute with 100 ul of water).
Reconstitution Method:	<ol style="list-style-type: none">1. Centrifuge at 5,000xg for 5min.2. Carefully open the tube and add 100ul of sterile water to dissolve the DNA.3. Close the tube and incubate for 10 minutes at room temperature.4. Briefly vortex the tube and then do a quick spin (less than 5000xg) to concentrate the liquid at the bottom.5. Store the suspended plasmid at -20°C. The DNA is stable for at least one year from date of shipping when stored at -20°C.
Note:	Plasmids are not sterile. For experiments where strict sterility is required, filtration with 0.22um filter is required.
RefSeq:	NM_144670.5 , NP_653271.2
RefSeq Size:	5123 bp
RefSeq ORF:	4365 bp
Locus ID:	144568
Cytogenetics:	12p13.31
MW:	161 kDa
Gene Summary:	This gene encodes a member of the alpha-macroglobulin superfamily. The encoded protein is thought to be an N-glycosylated monomeric protein that acts as an inhibitor of several proteases. It has been shown to form covalent interactions with proteases, and has been reported as the p170 antigen recognized by autoantibodies in the autoimmune disease paraneoplastic pemphigus (PNP; PMID:20805888). Mutations in these gene have also been associated with some cases of Noonan syndrome (NS; PMID:24939586) as well as some cases of otitis media (PMID:26121085). Alternative splicing results in multiple transcript variants encoding different isoforms. [provided by RefSeq, Aug 2015]

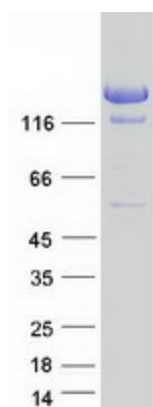
Product images:



Circular map for RC219615



Western blot validation of overexpression lysate (Cat# [LY408209]) using anti-DDK antibody (Cat# [TA50011-100]). Left: Cell lysates from untransfected HEK293T cells; Right: Cell lysates from HEK293T cells transfected with RC219615 using transfection reagent MegaTran 2.0 (Cat# [TT210002]).



Coomassie blue staining of purified A2ML1 protein (Cat# [TP319615]). The protein was produced from HEK293T cells transfected with A2ML1 cDNA clone (Cat# RC219615) using MegaTran 2.0 (Cat# [TT210002]).