

Product datasheet for **RC219597**

Chromosome X open reading frame 6 (MAMLD1) (NM_005491) Human Tagged ORF Clone

Product data:

Product Type:	Expression Plasmids
Product Name:	Chromosome X open reading frame 6 (MAMLD1) (NM_005491) Human Tagged ORF Clone
Tag:	Myc-DDK
Symbol:	Chromosome X open reading frame 6
Synonyms:	CG1; CXorf6; F18; HYSP2
Mammalian Cell Selection:	Neomycin
Vector:	pCMV6-Entry (PS100001)
E. coli Selection:	Kanamycin (25 ug/mL)



[View online »](#)

ORF Nucleotide Sequence:

>RC219597 representing NM_005491
 Red=Cloning site Blue=ORF Green=Tags(s)

TTTTGTAATACGACTCACTATAGGGCGGCCGGGAATTCGTCGACTGGATCCGGTACCGAGGAGATCTGCC
 GCC**CGATCGCC**

ATGGATGACTGGAAAAGTCGGCTTGTAAATCAAGAGCATGCTTCCCATTTCGCCATGGTGGGAAATCGTC
 AGGAGCCCAGAAAAGCTCCAGGAATCGGGAAAGAAGCCCTCGTGGATGGAGGAAGAAGATTTATCTTTTCT
 CTACAAGAGCAGCCAGGAAGAAAGCATCAGGGAAGTGTAAAGAGGAGACAAGAAGAAGACCACTTCCAG
 TTTCCAGACATGGCTGATGGGGCTACCCTAATAAAAATTAAGAGGCCTTGCCTTGAAGATGTCACCCCTG
 CAATGGGCCAGGTGCTCATCTAGTACTGCTTGTGCAGAACTGCAGGTCCCTCCATTGACAATAAATCC
 TAGCCCTGCGGCTATGGGAGTGGCTGGCCAGTCTTACTGCTGGAGAATAACCCTATGAATGGCAACATC
 ATGGGCTACCATTTGTAGTACCACAGACTACAGAAGTGGGACTGAAAGGGCCCACTGTTCTTACTATG
 AGAAAATCAACAGCGTCCCGCTGTAGACCAGGAGCTTCAAGAGCTGCTAGAGGAGCTCACAAAATTC
 AGACCTTCTCCAAATGAGCTAGATCTTGAGAAGATACTGGGACGAAGCCAGAAGGCCACTGGTTTTA
 GATCATCCCCAGCAACCCTAAGCACAACCTCCCAAGCCTTCGGTTTCAGATGTCACACTTGGAGAGCCTGG
 CTTCCAGCAAGGAGTTTGTCTTCTAGTTGCAGCCAAAGTACTGGCATGTCACTTCAGATCCCATCCTCCTC
 CACAGGGATCAGCTATTCGATTCCCTTCCACCAGTAAGCAGATAGTGTACCCGAGTTCTTCAATGGCAGAG
 TCCAAGAGCCAGGTCCAGGCCATGTCCCTGTGCTCTGCCCCCTTACCAGTGCCTCAGTGGCATCACG
 CCCACCAGCTGAAGGCGTTGGCAGCCAGCAAGCAGGGGTCTGCTACAAAGCAGCAAGGGCCACCCCCAG
 TTGGTCTGGTCTGCCTCCTCCAGGACTCTCTCCACCTTACCGCCAGTGCATCACACACCCACCACCG
 CTGCCACTGCCACCACCACCCCCATTACGCCCCAGAGCCTCATGGTGTCTGCATGTCGTCCAATA
 CTTTGTGGGCTAGCACTCTCCGAGGCTCTCCCAATGCCCTTACTGTCAAGCATGACCTCCAGCAAGTGC
 TGCCCTGGGGCCCGCCATGCCCTATGCTCCTGAGAAGCTCCCGAGCCCTGCTCTCACTCAACAGCCGCGAG
 TTCGGCCCTCAGAGCTCCATTCTTGCCAACTCATGCTCTTACCATCAAACCCCTCAAGGACACCTGA
 TGTCTGCTCTGCCTGCCAGCAACCCTGGGCGTCCCCACCCTATCGCCAGAGAAGCTCTTAGCCACAGG
 CTTGCCACAGCAGTCTTACCCACAGTGTCTCCATGATCCGAAGCCTCACTCCACCAGTAATCTTCTA
 AGCCAGCAACAGCAGCAGCAGCAGCAGCAGCAAGCAATGTGATCTTTAAGCCATAAGCAGCAACT
 CATCCAAAACCTGAGCATGATCATGCAGCAGGGGATGGCAAGCTCCAGCCAGGAGCCACGGAGCCATT
 TACTTTTGGCAACACCAAGCCCTTGTCCATTTTGTCTTCTGAGCCGGTCCCGAGAAGATGCCCTCCATG
 CCTACCACCTCTAGGCAGCCTTCCCTGCTCCACTACCTGCAGCAGCCGACACCAACGCAGGCCTCCTCAG
 CCACTGCCTCCTCCACGGCCACTGCCACCTTGACAGCTGCAGCAGCAGCAGCAACAGCAGCAGCAGCC
 TGACCATTCTTATTCTTCTGCAGCAGATGATGCAGCAACCCAGCGTTTTTCAGCGATCAGTGGCCTCA
 GATTCCATGCCTGCTCTGCCAGACAGGGCTGTTGCCATCTGTTTGCATGGACTTCTGCAGCTAGCTCGG
 TGAAGCCCAGCATCAACACGGGAAGTCTTCACTAGCAGGCAAGATCCTCAGCCTGGAGACGTGTCACC
 GTCTAACATTACTCATGTAGACAAAGCCTGCAAGCTTGGGGAAGCCAGGCACCCCAAGTCCAGCCTCGGG
 CGACAGCCCCGCTCCTGCCAGGCCCTGGGAGTGTGCTTCTTCTGCCCGGAGCTCCTTTGCTCATGAGC
 TGGCCCGAGTACCTCCTCGTACAGCACCTCAGAGGCAGCGCCCTGGGGCAGCTGGGATCCGAAGCCCTG
 GAGGCAGGTGCCCGTCCACTACTGCCTAGCTGCCAGCCACAGCAAGAGGAACAGAGATCAGGTCTTAT
 GGCAATGACCCC

ACGCGTACGCGGCCGCTCGAGCAGAAACTCATCTCAGAAGAGGATCTGGCAGCAAATGATATCCTGGATT
 ACAAGGATGACGACGATAAGGTTTAA

Protein Sequence: >RC219597 representing NM_005491
Red=Cloning site Green=Tags(s)

MDDWKSRLVIKSMLPHFAMVGNRQEPRKLQESGKKPSWMEEDLSFLYKSSPGRKHQGTVKRRQEEDHFQ
FPDMADGGYPNKIKRPCLEDVTLAMGPGAHPSTACAELQVPLTINPSAAMGVAGQSLLENNPMNGNI
MGSPFVVPQTTEVGLKGPTVPYYEKINSVPAVDQELQELLEELTKIQDPSNELDLEKILGTKPEEPLVL
DHPQATLSTTPKPSVQMSHLESASSKEFASSCSQVTGMSLQIPSSSTGISYSIPSTSKQIVSPSSMAQ
SKSQVQAMLPVALLPVPQWHHAHLKALAASKQGSATKQQGTPSWGLPPPGLSPPYRPVPSPHPPP
LPLPPPPPFSPQSLMVSCMSSNTLSGSTLRGSPNALLSSMTSSSNAALGPAMPYAPEKLPSPALTQQPQ
FGPQSSILANLMSSTIKTPQGHLMSALPASNPGSPPYRPEKLSPPGLPQQSFTPQCSLIRSLTPTSNLL
SQQQQQQQQQANVIFKPISSNSSKTL SMIMQQGMASSSPGATEPFTFGNTKPLSHFVSEPGPKMPSM
PTTSRQPSLLHYLQQPTPTQASSATASSTATATLQLQQQQQQQQPDHSSFLQMMQQPQRFQRSVAS
DSMPALPRQGCCHLFAWTSAASSVKPQHGHNSF TSRQDPQPGDVSPSNI THVDKACKLGEARHPQVSLG
RQPPSCQALGSEFSLPGSSFAHELARVTSSYSTSEAAPWGSWDPKAWRQVPAPLLPSCDATARGTEIRSY
GNDP

TRTRPLEQKLI SEEDLAANDILDYKDDDDKV

Chromatograms: https://cdn.origene.com/chromatograms/mk6818_a01.zip

Restriction Sites: Sgfl-Mlul

Cloning Scheme:



ACCN: NM_005491

ORF Size: 2322 bp

OTI Disclaimer: The molecular sequence of this clone aligns with the gene accession number as a point of reference only. However, individual transcript sequences of the same gene can differ through naturally occurring variations (e.g. polymorphisms), each with its own valid existence. This clone is substantially in agreement with the reference, but a complete review of all prevailing variants is recommended prior to use. [More info](#)

OTI Annotation: This clone was engineered to express the complete ORF with an expression tag. Expression varies depending on the nature of the gene.

Components: The ORF clone is ion-exchange column purified and shipped in a 2D barcoded Matrix tube containing 10ug of transfection-ready, dried plasmid DNA (reconstitute with 100 ul of water).

Reconstitution Method:

1. Centrifuge at 5,000xg for 5min.
2. Carefully open the tube and add 100ul of sterile water to dissolve the DNA.
3. Close the tube and incubate for 10 minutes at room temperature.
4. Briefly vortex the tube and then do a quick spin (less than 5000xg) to concentrate the liquid at the bottom.
5. Store the suspended plasmid at -20°C. The DNA is stable for at least one year from date of shipping when stored at -20°C.

RefSeq: [NM_005491.4](#), [NP_005482.2](#)

RefSeq Size: 4636 bp

RefSeq ORF: 2325 bp

Locus ID: 10046

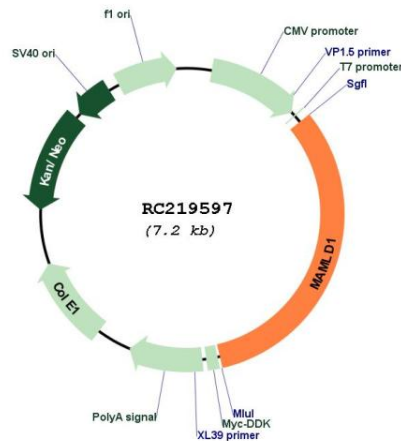
UniProt ID: [Q13495](#)

Cytogenetics: Xq28

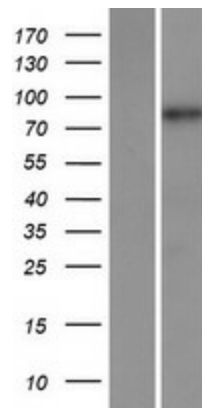
MW: 83.1 kDa

Gene Summary: This gene encodes a mastermind-like domain containing protein. This protein may function as a transcriptional co-activator. Mutations in this gene are the cause of X-linked hypospadias type 2. Alternate splicing results in multiple transcript variants. [provided by RefSeq, Apr 2010]

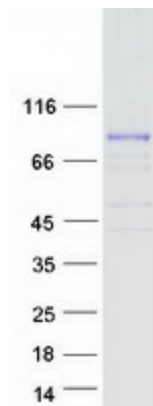
Product images:



Circular map for RC219597



Western blot validation of overexpression lysate (Cat# [LY417276]) using anti-DDK antibody (Cat# [TA50011-100]). Left: Cell lysates from untransfected HEK293T cells; Right: Cell lysates from HEK293T cells transfected with RC219597 using transfection reagent MegaTran 2.0 (Cat# [TT210002]).



Coomassie blue staining of purified MAMLD1 protein (Cat# [TP319597]). The protein was produced from HEK293T cells transfected with MAMLD1 cDNA clone (Cat# RC219597) using MegaTran 2.0 (Cat# [TT210002]).