

Product datasheet for **RC219595**

DACH2 (NM_053281) Human Tagged ORF Clone

Product data:

Product Type:	Expression Plasmids
Product Name:	DACH2 (NM_053281) Human Tagged ORF Clone
Tag:	Myc-DDK
Symbol:	DACH2
Mammalian Cell Selection:	Neomycin
Vector:	pCMV6-Entry (PS100001)
E. coli Selection:	Kanamycin (25 ug/mL)



[View online »](#)

ORF Nucleotide Sequence:

>RC219595 representing NM_053281
 Red=Cloning site Blue=ORF Green=Tags(s)

TTTTGTAATACGACTCACTATAGGGCGGCCGGGAATTCGTCGACTGGATCCGGTACCGAGGAGATCTGCC
 GCC**CGCATCGCC**

ATGGCTGTCTCCGCATCTCCAGTGTCTCTGCAACTCCAGCGGGCGCGCTCCCGGGGGCTTATTCC
 GGGCCGAACCCCTGACTCGACTCCAGAGAGCCCTCGTCTTACTCCTAATATGATCAATAGTTTCGT
 GGTAAATAACCACAGCAACAGTCCCGGAGGCGCGGCAGGGGCAACACCAACACCAAGTCCCGCATG
 GTCGACATGCACGGGATGAAGTGGCTTCGTTCTGATGGACGGCCAGGAAGTCTGCTGCCGCAAG
 TCTTTGATCTTTTCTCAAGCACCTGGTGGGAGGCTTGCACACTGTGTACACCAAGCTGAAGAGACTGGA
 TATATCCCCCGTGGTGTACTGTTGAGCAGTCCGGATCCTCCGCGGGCTGGGGCCATCCAGCCCGGG
 GTAACCCTGCAAACTCATCCAGGAAAGACTTCGAACTTTGTTACCGATTGCACCAATGCCAGAA
 GGAAGAGGCAAAAGACAAGAAAACAAGCTGTTAACAGTCAAGACCCGGCAGGCCCTTAAGCGTCTTT
 GGGAGTGTGCAGGAAAATGCCCGCTTCTGACCCATGCAGTCCAGGCCTTTATCGCCAGGACTTATC
 ACTCCGACAGGTATAACAGCTGCAGCGATGGCTGAGGCGATGAACTTCAGAAGATGAAGCTTATGGCTA
 TGAACACTCTTCAGGAAATGGAAGCAAAAATGGGACCGAATCAGAGCCTGATGATCTTAATTCTAACAC
 AGGTGGAAGTGAATCCTCCTGGGATAAAGATAAGATGCAGTCTCCATTTGCTGCACCTGGACCCCAACAT
 GGAATTGCTCATGCAGCCCTAGCTGGCCAGCCAGGCATTGGGGGTGCTCCAACCTCAATCCACTGCAGC
 AGAACCACCTGCTAACCAATAGACTGGATCTGCCATTTATGATGATGCCTCATCCCTACTTCCAGTCAG
 CTTACCTCCTGCATCAGTTGCCATGGCAATGAATCAGATGAACCATCTCAATACTATTGCCAACATGGCT
 GCTGCAGCACAGATTACAGTCCACTCTCCAGAGCTGGTACCTCTGTTATAAAGGAGCGGATCCCAGAGA
 GTCCTTCTCCTGCTCTTCTCTAGAAGAGAATCATCGTCTGGGAGCCAGACCTTCCCACACCCAGCAG
 CAGTGTGTCCAGCTCTCCCTCTCAGATGGATCATCATTGGAAAGAATGGAAGAGGTACCAAGTTCAAATT
 CCAATAATGAAGTCAACCTTGGACAAGATACAGCTGACTCCTGGGAGGATTGCCCGCTGGATTCCCTG
 GACCATTCAATTTTGTGATAGTCTGCTCCTCCGTGGAGACTCTGTTGACCAACATTCCAGGTCTGCTGAA
 AGTTGCTTTGGATAATGCTCGCATCCAGGAGAAGCAGATTCAACAAGAAAAGAAGGAGCTGCGACTGGAG
 CTCTATAGAGAGAGAGAAATTAGAGAAAACCTTGAAGACAACCTGCAGTTGAGCTTCAAAGCAGAACTA
 CTATGCAAAAGCGCTGAAGAAGGAGAAAAAACAAGAGAAAATGCAGGAAGCCTTGGAAATTTGAATC
 AAAGCGCCGGGAGCAAGTGGAGCAGGCCTTAAGCAAGCCACCACTAGTGACAGTGGCCTGAGGATGTTA
 AAAGATACTGGAATTCAGATATTGAAATAGAAAACAATGGGACTCCTCATGATAGTGTCTATGCAAG
 GAGGTAATACTACTGTTTAGAAATGGCACAACAGTTGTATTACGCC

ACGCGTACGCGGCGGCTCGAGCAGAAACTCATCTCAGAAGAGGATCTGGCAGCAAATGATATCCTGGATT
 ACAAGGATGACGACGATAAGGTTTAA

Protein Sequence:

>RC219595 representing NM_053281
 Red=Cloning site Green=Tags(s)

MAVSASPVISATSSGAGVPGGLFRAEPLYSTPREPRLTPNMINSFVNNHNSNSAGGGGRGNTNTNECRM
 VDMHGMKVASFLMDGQELICLPQVFDLFLKHLVGGHTVYTKLKRLDISPVVCTVEQVRIILRGLGAIQPG
 VNRCKLITRKDFETLFTDCTNARRKQMRKQAVNSSRPRGPPKRSGLVLEQENARLLTHAVPGLLSPGLI
 TPTGITAAAMAEAMKQKMKLMAMNTLQNGSQNGTESEPDLLNSNTGGSESSWDKDKMQSPFAAPGPQH
 GIAHAALAGQPGIGGAPTLNPLQQNHLLTNRLDLPFMMMPHLLPVSLPPASVAMAMNQMNHLNTIANMA
 AAAQIHSPLSRAGTSVIKERIPESPPAPSLLENHRPGSQTSSHTSSSVSSPSQMDHHLERMEEVPVQI
 PIMKSPLDKIQLTPGQALPAGFPQPFIFADSLSSVETLLTNIQGLLKVALDNARIQEKIQEKKELRLE
 LYREREIRENLERQLAVELQSRRTMQKRLKKEKTKRKLQEALEFESKRREQVEQALKQATTSDSGLRML
 KDTGIPDIEIENNGTPHDSAAMQGGNYCLEMAQQLYSA

TRTRPLEQKLISEEDLAANDILDYKDDDDKV

Chromatograms:

https://cdn.origene.com/chromatograms/mk8019_e12.zip

Restriction Sites: SgfI-MluI

Cloning Scheme:



ACCN: NM_053281

ORF Size: 1797 bp

OTI Disclaimer: The molecular sequence of this clone aligns with the gene accession number as a point of reference only. However, individual transcript sequences of the same gene can differ through naturally occurring variations (e.g. polymorphisms), each with its own valid existence. This clone is substantially in agreement with the reference, but a complete review of all prevailing variants is recommended prior to use. [More info](#)

OTI Annotation: This clone was engineered to express the complete ORF with an expression tag. Expression varies depending on the nature of the gene.

Components: The ORF clone is ion-exchange column purified and shipped in a 2D barcoded Matrix tube containing 10ug of transfection-ready, dried plasmid DNA (reconstitute with 100 ul of water).

- Reconstitution Method:
1. Centrifuge at 5,000xg for 5min.
 2. Carefully open the tube and add 100ul of sterile water to dissolve the DNA.
 3. Close the tube and incubate for 10 minutes at room temperature.
 4. Briefly vortex the tube and then do a quick spin (less than 5000xg) to concentrate the liquid at the bottom.
 5. Store the suspended plasmid at -20°C. The DNA is stable for at least one year from date of shipping when stored at -20°C.

RefSeq: [NM_053281.3](#)

RefSeq Size: 2232 bp

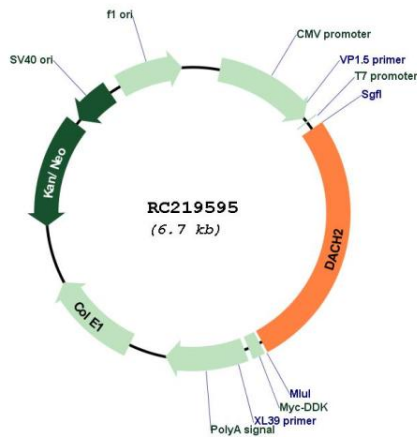
RefSeq ORF: 1800 bp

Locus ID: 117154

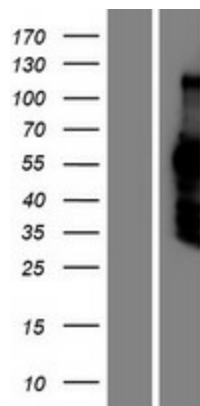
UniProt ID: [Q96NX9](#)
Cytogenetics: Xq21.2
Domains: Ski_Sno
Protein Families: Transcription Factors
MW: 65.1 kDa

Gene Summary: This gene is one of two genes which encode a protein similar to the Drosophila protein dachshund, a transcription factor involved in cell fate determination in the eye, limb and genital disc of the fly. The encoded protein contains two characteristic dachshund domains: an N-terminal domain responsible for DNA binding and a C-terminal domain responsible for protein-protein interactions. This gene is located on the X chromosome and is subject to inactivation by DNA methylation. The encoded protein may be involved in regulation of organogenesis and myogenesis, and may play a role in premature ovarian failure. Multiple transcript variants encoding different isoforms have been found for this gene. [provided by RefSeq, Nov 2008]

Product images:



Circular map for RC219595



Western blot validation of overexpression lysate (Cat# [LY409299]) using anti-DDK antibody (Cat# [TA50011-100]). Left: Cell lysates from untransfected HEK293T cells; Right: Cell lysates from HEK293T cells transfected with RC219595 using transfection reagent MegaTran 2.0 (Cat# [TT210002]).