

## Product datasheet for RC219586

### LARP2 (LARP1B) (NM\_032239) Human Tagged ORF Clone

#### Product data:

Product Type:	Expression Plasmids
Product Name:	LARP2 (LARP1B) (NM_032239) Human Tagged ORF Clone
Tag:	Myc-DDK
Symbol:	LARP2
Synonyms:	LARP2
Mammalian Cell Selection:	Neomycin
Vector:	pCMV6-Entry (PS100001)
E. coli Selection:	Kanamycin (25 ug/mL)
ORF Nucleotide Sequence:	>RC219586 representing NM_032239 Red=Cloning site Blue=ORF Green=Tags(s)

TTTTGTAATACGACTCACTATAGGGCGGCCGGAATTCGTCGACTGGATCCGGTACCGAGGAGATCTGCC  
GCC**CGATCGCC**

ATGGAGAATTGGCCAACCAAGTGAATTAGTGAACACTGGATTCAGAGCGTCTCAGCCAAGGAAATA  
AAAAGCCACAAAATAGAAAAGAAAAGAAGAGAAGGTTGAAAAGAGAAGTAAACAGTGACAGCAAAGAAA  
CCGGGAAACAAAATTAATGGTCTGGTAAAACGTCAGTGAGGATGAGGCTCAGTCAAGTAATCAACGT  
AAGAGAGCTAATAAGCACAAAGTGGTACCCTCACTTAGATGTTGTAAGATCAGAGAGTCAAGAAAGAC  
CTGGATCCCGAACAGCTCAAGATGTCAACCTGAAGCAAATAAACCAACACATAACAATAGGAGAAATGA  
TACACGAAGTTGGAAGCGAGATAGAGAAAAAGAGATGATCAAGATGACGTTTCCAGTGTGAGAAGTGAG  
GGTGGTAAATCCGAGGTTCTTTAGAGGTCGAGGAAGAGGCCGAGGACGGGAAGAGGACGAGGACAGAG  
GAAATCTCGATTGAACTTTGATTATTCATATGTTTATCAAGAACATGGTAAAGGACTGATCAACCATT  
TCAAACAGAACTTAATACCAGTATGATGTATTACTATGATGATGGTACAGGTGTACAGGTGTATCCTGTG  
GAAGAAGCGTTGCTTAAAGAGTATATTAAGCGTCAAATGAATATTACTTCAGTGTAGAAAATTTGGAAC  
GAGACTTCTTTCTCGGGGAAAGATGGATGAACAAGGTTTCTTGCCTATTTCCCTGATTGCTGGTTTTCA  
GCGTGTTCAGGCTCTCACTACAAACCTTAATCTCATCTTAGAGGCACTGAAGGATAGCACAGAAGTAGAA  
ATTGTGGATGAGAAAATGAGAAAAAGATAGAACCAGAAAAATGGCCAATTCCAGGCCCTCCTCCACGCA  
GTGTGCCACCAACAGACTTCTCTCAACTGATTGATTGTCCAGAGTTTGTACCAGGCCAAGCCTTTTGCTC  
ACATACAGGTAACATCTTTTCTTAGAGCAAACGATGTAACAGTGGGTTATTTGGTCCAATTTACTTAC  
TTATTTATTTATTTTCAGTTTAT

**ACGCGT**ACGCGGCCGCTCGAGCAGAAACTCATCTCAGAAGAGGATCTGGCAGCAAATGATATCCTGGATT  
ACAAGGATGACGACGATAAGGTTTAA



[View online »](#)

**Protein Sequence:** >RC219586 representing NM\_032239  
Red=Cloning site Green=Tags(s)

MENWPTPSELVNTGFQSVLSQGNKPKQNRKEKEEKVEKRSNSDSKENRETKLNGPGENVSEDEAQQSSNQR  
 KRANKHKWVPLHLDVVRSESQERPGRSRNSSRCQPEANKPTHNNRRNDTRS WKRDREKDDQDDVSSVRSE  
 GGNIRGSFRGRGRGRGRGRGRGNPRLNFDYSYGYQEHGERTDQPFQTELNTSMYYYYDDGTGVQVYYPV  
 EEALLKEYIKRQIEYYFSVENLERDFFLRGKMDEQGFLPISLIAGFQRVQALTTNLNLILEALKDSTEVE  
 IVDEKMRKKIEPEKWPIPGPPRSVPPTDFSQLIDCFEVPVGPQAFCSHTGNIFSSRANDVTVGYLVQFTY  
 LFIYFQFI

TRTRPLEQKLISEEDLAANDILDYKDDDDKV

**Chromatograms:** [https://cdn.origene.com/chromatograms/mk6493\\_c03.zip](https://cdn.origene.com/chromatograms/mk6493_c03.zip)

**Restriction Sites:** SgfI-MluI

**Cloning Scheme:**



\* The last codon before the Stop codon of the ORF

**ACCN:** NM\_032239

**ORF Size:** 1074 bp

**OTI Disclaimer:** The molecular sequence of this clone aligns with the gene accession number as a point of reference only. However, individual transcript sequences of the same gene can differ through naturally occurring variations (e.g. polymorphisms), each with its own valid existence. This clone is substantially in agreement with the reference, but a complete review of all prevailing variants is recommended prior to use. [More info](#)

**OTI Annotation:** This clone was engineered to express the complete ORF with an expression tag. Expression varies depending on the nature of the gene.

**Components:** The ORF clone is ion-exchange column purified and shipped in a 2D barcoded Matrix tube containing 10ug of transfection-ready, dried plasmid DNA (reconstitute with 100 ul of water).

- Reconstitution Method:**
1. Centrifuge at 5,000xg for 5min.
  2. Carefully open the tube and add 100ul of sterile water to dissolve the DNA.
  3. Close the tube and incubate for 10 minutes at room temperature.
  4. Briefly vortex the tube and then do a quick spin (less than 5000xg) to concentrate the liquid at the bottom.
  5. Store the suspended plasmid at -20°C. The DNA is stable for at least one year from date of shipping when stored at -20°C.

**RefSeq:** [NM\\_032239.4](#)

**RefSeq Size:** 2718 bp

**RefSeq ORF:** 1077 bp

**Locus ID:** 55132

**UniProt ID:** [Q659C4](#)

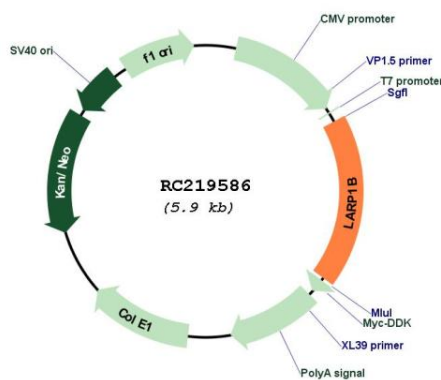
**Cytogenetics:** 4q28.2

**Domains:** DM15

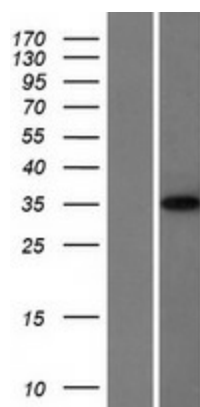
**MW:** 41.2 kDa

**Gene Summary:** This gene encodes a protein containing domains found in the La related protein of *Drosophila melanogaster*. La motif-containing proteins are thought to be RNA-binding proteins, where the La motif and adjacent amino acids fold into an RNA recognition motif. The La motif is also found in proteins unrelated to the La protein. Alternative splicing has been observed at this locus and multiple variants, encoding distinct isoforms, are described. Additional splice variation has been identified but the full-length nature of these transcripts has not been determined. [provided by RefSeq, Jun 2013]

### Product images:



Circular map for RC219586



Western blot validation of overexpression lysate (Cat# [LY410262]) using anti-DDK antibody (Cat# [TA50011-100]). Left: Cell lysates from untransfected HEK293T cells; Right: Cell lysates from HEK293T cells transfected with RC219586 using transfection reagent MegaTran 2.0 (Cat# [TT210002]).