

Product datasheet for **RC219578**

EEF1G (NM_001404) Human Tagged ORF Clone

Product data:

Product Type:	Expression Plasmids
Product Name:	EEF1G (NM_001404) Human Tagged ORF Clone
Tag:	Myc-DDK
Symbol:	EEF1G
Synonyms:	EF1G; GIG35
Mammalian Cell Selection:	Neomycin
Vector:	pCMV6-Entry (PS100001)
E. coli Selection:	Kanamycin (25 ug/mL)



[View online »](#)

ORF Nucleotide
Sequence:

>RC219578 representing NM_001404
Red=Cloning site Blue=ORF Green=Tags(s)

TTTTGTAATACGACTCACTATAGGGCGGCCGGGAATTCGTCGACTGGATCCGGTACCGAGGAGATCTGCC
GCCGCGATCGCC

ATGGCGGCTGGGACCCTGTACACGTATCCTGAAAACCTGGAGGGCCTTCAAGGCTCTCATCGCTGCTCAGT
ACAGCGGGGCTCAGGTCCGCGTGTCTCCGCACCACCCCACTTCCATTTGGCCAAACCAACCGCACCCC
TGAATTTCTCCGCAAATTTCTGCGCGCAAGGTCCAGCATTGAGGGTATGATGGATTCTGTGTGTTT
GAGAGCAACGCCATTGCCTACTATGTGAGCAATGAGGAGCTGCGGGGAAGTACTCCAGAGGCAGCAGCCC
AGGTGGTGCAGTGGGTGAGCTTTGCTGATTCGATATAGTGCCCCAGCCAGTACCTGGGTGTTCCCCAC
CTTGGGCATCATGCACCACAACAACAGGCCACTGAGAATGCAAAGGAGGAAGTGGGCGAATTCTGGGG
CTGCTGGATGCTTACTTGAAGACGAGGACTTTTCTGGTGGGCGAACGAGTGACATTGGCTGACATCACAG
TTGTCTGCACCCTGTTGGCTCTATAAGCAGGTTCTAGAGCCTTCTTCCGCCAGGCCCTTCCCAATAC
CAACCGCTGGTTCCTCACCTGCATTAACCAGCCCCAGTTCGGGGTGTCTTGGGCGAAGTAAAAGTGTGT
GAGAAGATGGCCAGTTTGTATGCTAAAAAGTTTGACAGAGACCCAACTAAAAGGACACACCACGGAAAG
AGAAGGGTTCACGGGAAGAGAAGCAGAAGCCCCAGGCTGAGCGGAAGGAGAGAAAAAGGCGGCTGCCCC
TGCTCCTGAGGAGGAGATGGATGAATGTGAGCAGGCGCTGGCTGCTGAGCCAAAGGCCAAGGACCCCTTC
GCTCACCTGCCAAGAGTACCTTTGTGTTGGATGAATTTAAGCGCAAGTACTCCAATGAGGACACACTCT
CTGTGGCACTGCCATATTTCTGGGAGCACTTTGATAAAGGACGGCTGGTCCCTGTGGTACTCAGAGTATCG
CTTCCCTGAAGAACTCACTCAGACCTTCATGAGCTGCAATCTCATCACTGGAATGTTCCAGCGACTGGAC
AAGCTGAGGAAGAATGCCTTCGCCAGTGCATCCTTTTGAACCAACAATAGCAGCTCCATTTCTGGAG
TCTGGGCTTCCGAGGCCAGGAGCTTGCCTTTCCGCTGAGTCCAGATTGGCAGGTGGACTACGAGTCATA
CACATGGCGGAAACTGGATCCTGGCAGCGAGGACCCAGACGCTGGTTCGAGAGTACTTTTCTGGGAG
GGGCTTCCAGCATGTGGGCAAAGCCTTCAATCAGGGCAAGATCTTCAAG

ACGCGTACGCGGCCGCTCGAGCAGAACTCATCTCAGAAGAGGATCTGGCAGCAAATGATATCCTGGATT
ACAAGGATGACGACGATAAGGTTTAA

Protein Sequence:

>RC219578 representing NM_001404
Red=Cloning site Green=Tags(s)

MAAGTLTYPENWRAFKALIAAQYSGAQVRLSAPPHFHGQTNRTPEFLRKFPAGKVPAFEGDDGFCVF
ESNAIAYVVSNEELRGSTPEAAAQVQVVSFADSDIVPPASTWVFPTLGMHNNKQATENAKEEVRRILG
LLDAYLKRTRFLVGERVTLADITVVCTLLWLKQVLEPSFRQAFPNTRWFLTCINQPQFRAVLGEVKLC
EKMAQFDKAKFAETQPKKDTPRKEKGSREEKQKQAEERKEEKAAAPAPEEEMDECEQALAAEPKAKDPF
AHLPKSTFVLDEFKRKYSNEDTLSVALPYWEHFDKDGWLSWYSEYRFPPEELTQTFMSCNLITGMFQRLD
KLRKNAFASVILFGTNNSSISGVWVFRGQELAFPLSPDWQVDYESTYWRKLDPGSEETQTLVREYFSWE
GAFQHVKGAFNQKIFK

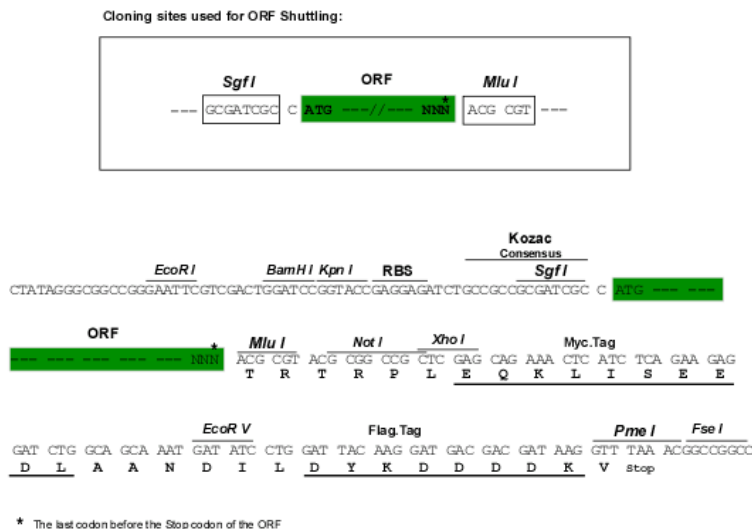
TRTRPLEQKLISEEDLAANDILDYKDDDDKV

Chromatograms:

https://cdn.origene.com/chromatograms/mk6248_g02.zip

Restriction Sites:

Sgfl-Mlul

Cloning Scheme:


ACCN: NM_001404

ORF Size: 1311 bp

OTI Disclaimer: The molecular sequence of this clone aligns with the gene accession number as a point of reference only. However, individual transcript sequences of the same gene can differ through naturally occurring variations (e.g. polymorphisms), each with its own valid existence. This clone is substantially in agreement with the reference, but a complete review of all prevailing variants is recommended prior to use. [More info](#)

OTI Annotation: This clone was engineered to express the complete ORF with an expression tag. Expression varies depending on the nature of the gene.

Components: The ORF clone is ion-exchange column purified and shipped in a 2D barcoded Matrix tube containing 10ug of transfection-ready, dried plasmid DNA (reconstitute with 100 ul of water).

Reconstitution Method:

1. Centrifuge at 5,000xg for 5min.
2. Carefully open the tube and add 100ul of sterile water to dissolve the DNA.
3. Close the tube and incubate for 10 minutes at room temperature.
4. Briefly vortex the tube and then do a quick spin (less than 5000xg) to concentrate the liquid at the bottom.
5. Store the suspended plasmid at -20°C. The DNA is stable for at least one year from date of shipping when stored at -20°C.

RefSeq: [NM_001404.5](#)

RefSeq Size: 1429 bp

RefSeq ORF: 1314 bp

Locus ID: 1937

UniProt ID: [P26641](#)

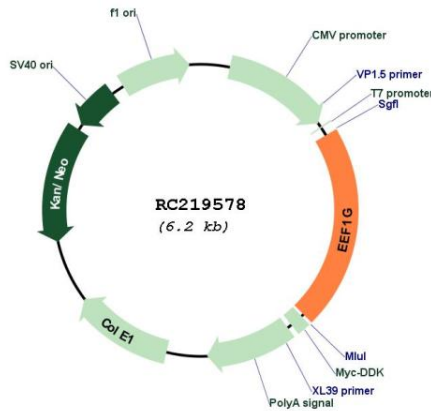
Cytogenetics: 11q12.3

Domains: EEF1G_domain, GST_N, GST_C

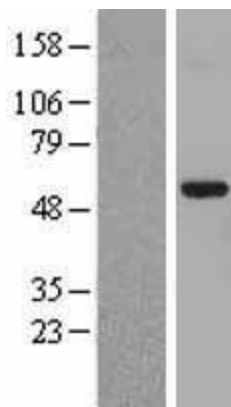
MW: 49.9 kDa

Gene Summary: This gene encodes a subunit of the elongation factor-1 complex, which is responsible for the enzymatic delivery of aminoacyl tRNAs to the ribosome. This subunit contains an N-terminal glutathione transferase domain, which may be involved in regulating the assembly of multisubunit complexes containing this elongation factor and aminoacyl-tRNA synthetases. [provided by RefSeq, Jul 2008]

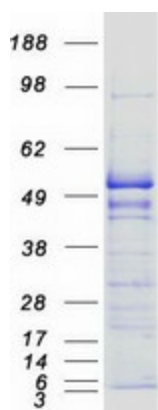
Product images:



Circular map for RC219578



Western blot validation of overexpression lysate (Cat# [LY419955]) using anti-DDK antibody (Cat# [TA50011-100]). Left: Cell lysates from untransfected HEK293T cells; Right: Cell lysates from HEK293T cells transfected with RC219578 using transfection reagent MegaTran 2.0 (Cat# [TT210002]).



Coomassie blue staining of purified EEF1G protein (Cat# [TP319578]). The protein was produced from HEK293T cells transfected with EEF1G cDNA clone (Cat# RC219578) using MegaTran 2.0 (Cat# [TT210002]).