

Product datasheet for RC219575

OR8S1 (NM_001005203) Human Tagged ORF Clone

Product data:

Product Type:	Expression Plasmids
Product Name:	OR8S1 (NM_001005203) Human Tagged ORF Clone
Tag:	Myc-DDK
Symbol:	OR8S1
Mammalian Cell Selection:	Neomycin
Vector:	pCMV6-Entry (PS100001)
E. coli Selection:	Kanamycin (25 ug/mL)
ORF Nucleotide Sequence:	>RC219575 representing NM_001005203 Red=Cloning site Blue=ORF Green=Tags(s)

TTTTGTAATACGACTCACTATAGGGCGGCCGGAATTCGTCGACTGGATCCGGTACCGAGGAGATCTGCC
GCC**CGATCGCC**

ATGGCCTTGGGAATCACAGCACCATCACCGAGTTCCTCCTCTGGGCTGTCTGCCGACCCCAACATCC
GGGCTCTGCTCTTTGTGCTGTTCTGGGATTTACCTCCTGACCAATATGGAAAACCTGATGCTGCTGCT
CGTGATCAGGGCTGATTCTTGTCTCCATAAGCCCATGATTTCTCCTGAGTCACCTCTCTTTTGTGAT
CTCTGCTTCTCTCAGTCATTGTGCCAAGATGTGGAGAACCCTCCTGTACAGAGGAAAACCATTTTCAG
TAGAGGGCTGCCGGCTCAGGTCTTCTTTGTGTTGTCACTGCAGGGACTGAAGCCTGCCTCTCTCAGG
GATGGCCTATGACCGCCATGCTGCCATCCGCCGCCACTACTTTATGGACAGATCATGGGTAACAGCTG
TATATGCACCTTGTGTGGGCTCATGGGACTGGGCTTCTGGACGCACTCATCAATGTCCTCCTAGCTG
TAAACATGGTCTTTTGTGAAGCCAAAATCATTACCACACTACAGCTATGAGATGCCATCCCTCCTCCTCT
GTCCTGCTCTGATATCTCCAGAAGCCTCATCGTTTTGCTCTGCTCCACTCTCCTACATGGGCTGGGAAAC
TTCCTTTTGGTCTTTATCCTACACCCGTATAATCTCTACCATCCTAAGCATCAGCTCTACCTCGGGCA
GAAGCAAGGCCTTCTCCACCTGCTCTGCCACCTCACTGCAGTGACACTTACTATGGCTCAGGTTTGTCT
CCGCCATCTCATGCCAACTCAGGTTCCCCATAGAGTTGATCTTCTCTGTGCAGTATACTGTAGTCACT
CCCATGCTGAATCCCTCATCTATAGCCTGAAAAATAAGGAAGTGAAGGGGAAAGAAGCCTCCGGGACA
GCAGTCATTTGCCTCAGCTGCACAAAGGCCAGGCCAGATGGAAGAGACCAGCCTTACCGAAGGCCGCAG
GGAGCCCGGACCCGGAGCTGAGCATTCCGGTACGCCTCAACCCCAAGGGGCTGCGCATGCTCCGCG
CTGCGCGCGGCCACGGCCCTGCC

ACGCGTACGCGGCCGCTCGAGCAGAACTCATCTCAGAAGAGGATCTGGCAGCAAATGATATCCTGGATT
ACAAGGATGACGACGATAAGGTTTAA



[View online »](#)

Protein Sequence: >RC219575 representing NM_001005203
Red=Cloning site Green=Tags(s)

MALGNHSTITEFLLLGLSADPNIRALLFVFLGLIYLLTIMENLMLLLVIRADSCLHKPMYFFLSHLSFVD
 LCFSSVIYPKMLENLLSQRKTIISVEGCLAQVFFVFTAGTEACLLSGMAYDRHAAIRRPLLYGQIMGKQL
 YMHLVWGSWGLGFLDALINVLLAVNMVFCEAKIIHHYSYEMPSLLPLSCSDISRSLIVLLCSTLLHGLGN
 FLLVFLSYTRIIISTILSISSTSGRSKAFSTCSAHLTAVTLYYGSGLLRHLMPNSGPIELIFSVQYTVVT
 PMLNLSLIYSLKNKEVKGERSLRDSSHLPQLHKGQARWKRPAFTEGRREP GHP ELSIPVTPQPQGACACSA
 LRAAPTALP

TRTRPLEQKLISEEDLAANDILDYKDDDDKV

Chromatograms: https://cdn.origene.com/chromatograms/mk8003_d04.zip

Restriction Sites: SgfI-MluI

Cloning Scheme:

Cloning sites used for ORF Shuttling:



* The last codon before the Stop codon of the ORF

ACCN: NM_001005203

ORF Size: 1077 bp

OTI Disclaimer: The molecular sequence of this clone aligns with the gene accession number as a point of reference only. However, individual transcript sequences of the same gene can differ through naturally occurring variations (e.g. polymorphisms), each with its own valid existence. This clone is substantially in agreement with the reference, but a complete review of all prevailing variants is recommended prior to use. [More info](#)

OTI Annotation: This clone was engineered to express the complete ORF with an expression tag. Expression varies depending on the nature of the gene.

Components: The ORF clone is ion-exchange column purified and shipped in a 2D barcoded Matrix tube containing 10ug of transfection-ready, dried plasmid DNA (reconstitute with 100 ul of water).

Reconstitution Method:

1. Centrifuge at 5,000xg for 5min.
2. Carefully open the tube and add 100ul of sterile water to dissolve the DNA.
3. Close the tube and incubate for 10 minutes at room temperature.
4. Briefly vortex the tube and then do a quick spin (less than 5000xg) to concentrate the liquid at the bottom.
5. Store the suspended plasmid at -20°C. The DNA is stable for at least one year from date of shipping when stored at -20°C.

RefSeq: [NM_001005203.1](#), [NP_001005203.1](#)

RefSeq Size: 1080 bp

RefSeq ORF: 1080 bp

Locus ID: 341568

UniProt ID: [Q8NH09](#)

Cytogenetics: 12q13.11

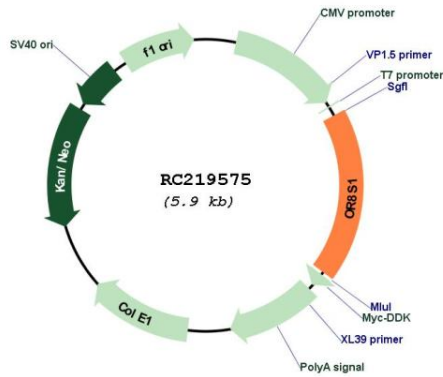
Protein Families: Transmembrane

Protein Pathways: Olfactory transduction

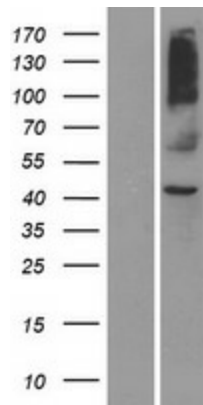
MW: 39.5 kDa

Gene Summary: Olfactory receptors interact with odorant molecules in the nose, to initiate a neuronal response that triggers the perception of a smell. The olfactory receptor proteins are members of a large family of G-protein-coupled receptors (GPCR) arising from single coding-exon genes. Olfactory receptors share a 7-transmembrane domain structure with many neurotransmitter and hormone receptors and are responsible for the recognition and G protein-mediated transduction of odorant signals. The olfactory receptor gene family is the largest in the genome. The nomenclature assigned to the olfactory receptor genes and proteins for this organism is independent of other organisms. [provided by RefSeq, Jul 2008]

Product images:



Circular map for RC219575



Western blot validation of overexpression lysate (Cat# [LY423797]) using anti-DDK antibody (Cat# [TA50011-100]). Left: Cell lysates from untransfected HEK293T cells; Right: Cell lysates from HEK293T cells transfected with RC219575 using transfection reagent MegaTran 2.0 (Cat# [TT210002]).