

Product datasheet for RC219569

CD32B (FCGR2B) (NM_001002273) Human Tagged ORF Clone

Product data:

Product Type:	Expression Plasmids
Product Name:	CD32B (FCGR2B) (NM_001002273) Human Tagged ORF Clone
Tag:	Myc-DDK
Symbol:	CD32B
Synonyms:	CD32; CD32B; FCG2; FCGR2; FCGR2C; FcRII-c; IGFR2
Mammalian Cell Selection:	Neomycin
Vector:	pCMV6-Entry (PS100001)
E. coli Selection:	Kanamycin (25 ug/mL)
ORF Nucleotide Sequence:	>RC219569 representing NM_001002273 Red=Cloning site Blue=ORF Green=Tags(s)

TTTTGTAATACGACTCACTATAGGGCGCCGGGAATTCGTCGACTGGATCCGGTACCGAGGAGATCTGCC
GCC**CGGATCGCC**

ATGGGAATCCTGTCACTTACCTGTCTTCCACTGAGAGTGACTGGGCTGACTGCAAGTCCCCCAGC
CTTGGGGTCATATGCTTCTGTGGACAGCTGTGCTATTCTGGCTCCTGTTGCTGGGACACCTGCTCCCC
AAAGGCTGTGCTGAAACTCGAGCCCCAGTGATCAACGTGCTCCAGGAGGACTCTGTGACTCTGACATGC
CGGGGACTCACAGCCCTGAGAGCGACTCCATTAGTGGTCCACAATGGGAATCTATTCCACCACACA
CGCAGCCAGCTACAGGTTCAAGGCCAACAACAATGACAGCGGGGAGTACACGTGCCAGACTGGCCAGAC
CAGCCTCAGCGACCCTGTGCATCTGACTGTGCTTCTGAGTGGCTGGTGTCTCCAGACCCCTCACCTGGAG
TTCCAGGAGGGAGAAACCATCGTGTGAGGTGCCACAGCTGGAAGGACAAGCCTCTGGTCAAGGTCACAT
TCTTCCAGAATGGAAAATCCAAGAAATTTCCCGTTCCGATCCCAACTTCTCCATCCCACAAGCAAACCA
CAGTCACAGTGGTGATTACCACTGCACAGGAAACATAGGCTACACGCTGTACTCATCCAAGCCTGTGACC
ATCACTGTCCAAGCTCCCAGCTTTCACCGATGGGGATCATTGTGGCTGTGGTCACTGGGATTGCTGTAG
CGGCCATTGTTGCTGCTGTAGTGGCCTTGATCTACTGCAGGAAAAAGCGGATTTACGCCAATCCCCTAA
TCCTGATGAGGCTGACAAAAGTTGGGGCTGAGAACACAATCACCTATTCACTTCTCATGCACCCGGATGCT
CTGGAAGAGCCTGATGACCAGAACCCTATT

ACGCGTACGCGGCCGCTCGAGCAGAAACTCATCTCAGAAGAGGATCTGGCAGCAAATGATATCCTGGATT
ACAAGGATGACGACGATAAGGTTTAA



[View online »](#)

Protein Sequence: >RC219569 representing NM_001002273
Red=Cloning site Green=Tags(s)

MGILSFLPVLATESDWADCKSPQPWGHMLLWTAVLFLAPVAGTPAPPKAVLKLEPQWINVLQEDSVTLTC
 RGTHSPESDSIQWFHNGNLIPTHTQPSYRFKANNNDSGEYTCQTGQTSLSDPVHLTVLSEWLVLQTPHLE
 FQEGETIVLRCHSWKDKPLVKVTFQNGKSKKF SRSDPNF SIPQANHSHSGDYHCTGNIGYTYLSSKPV
 ITVQAPSSSPMGIIVAVVTGIAVAIIAAVVALIYCRKKRISANPTNPDEADKVAENTITYSLLMHPDA
 LEEPDDQNRI

TRTRPLEQKLISEEDLAANDILDYKDDDDKV

Chromatograms: https://cdn.origene.com/chromatograms/mg2995_e03.zip

Restriction Sites: SgfI-MluI

Cloning Scheme:



ACCN: NM_001002273

ORF Size: 870 bp

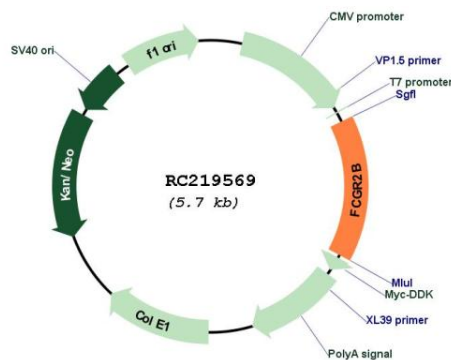
OTI Disclaimer: The molecular sequence of this clone aligns with the gene accession number as a point of reference only. However, individual transcript sequences of the same gene can differ through naturally occurring variations (e.g. polymorphisms), each with its own valid existence. This clone is substantially in agreement with the reference, but a complete review of all prevailing variants is recommended prior to use. [More info](#)

OTI Annotation: This clone was engineered to express the complete ORF with an expression tag. Expression varies depending on the nature of the gene.

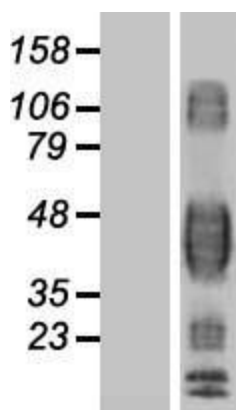
Components: The ORF clone is ion-exchange column purified and shipped in a 2D barcoded Matrix tube containing 10ug of transfection-ready, dried plasmid DNA (reconstitute with 100 ul of water).

Reconstitution Method:	<ol style="list-style-type: none"> 1. Centrifuge at 5,000xg for 5min. 2. Carefully open the tube and add 100ul of sterile water to dissolve the DNA. 3. Close the tube and incubate for 10 minutes at room temperature. 4. Briefly vortex the tube and then do a quick spin (less than 5000xg) to concentrate the liquid at the bottom. 5. Store the suspended plasmid at -20°C. The DNA is stable for at least one year from date of shipping when stored at -20°C.
RefSeq:	NM_001002273.2
RefSeq Size:	1573 bp
RefSeq ORF:	873 bp
Locus ID:	2213
UniProt ID:	P31994
Cytogenetics:	1q23.3
Protein Families:	ES Cell Differentiation/IPS, Transmembrane
Protein Pathways:	B cell receptor signaling pathway, Fc gamma R-mediated phagocytosis, Systemic lupus erythematosus
MW:	31.7 kDa
Gene Summary:	The protein encoded by this gene is a low affinity receptor for the Fc region of immunoglobulin gamma complexes. The encoded protein is involved in the phagocytosis of immune complexes and in the regulation of antibody production by B-cells. Variations in this gene may increase susceptibility to systemic lupus erythematosus (SLE). Several transcript variants encoding different isoforms have been found for this gene. [provided by RefSeq, Jun 2010]

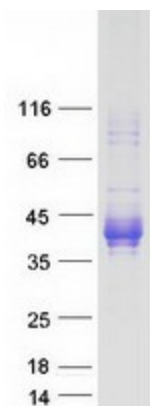
Product images:



Circular map for RC219569



Western blot validation of overexpression lysate (Cat# [LY424200]) using anti-DDK antibody (Cat# [TA50011-100]). Left: Cell lysates from untransfected HEK293T cells; Right: Cell lysates from HEK293T cells transfected with RC219569 using transfection reagent MegaTran 2.0 (Cat# [TT210002]).



Coomassie blue staining of purified FCGR2B protein (Cat# [TP319569]). The protein was produced from HEK293T cells transfected with FCGR2B cDNA clone (Cat# RC219569) using MegaTran 2.0 (Cat# [TT210002]).