

## Product datasheet for **RC219567**

### **CTIP1 (BCL11A) (NM\_022893) Human Tagged ORF Clone**

#### **Product data:**

Product Type:	Expression Plasmids
Product Name:	CTIP1 (BCL11A) (NM_022893) Human Tagged ORF Clone
Tag:	Myc-DDK
Symbol:	CTIP1
Synonyms:	BCL11A-L; BCL11a-M; BCL11A-S; BCL11A-XL; CTIP1; DILOS; EVI9; HBFQTL5; ZNF856
Mammalian Cell Selection:	Neomycin
Vector:	pCMV6-Entry (PS100001)
E. coli Selection:	Kanamycin (25 ug/mL)



[View online »](#)

**ORF Nucleotide Sequence:**

>RC219567 representing NM\_022893  
 Red=Cloning site Blue=ORF Green=Tags(s)

TTTTGTAATACGACTCACTATAGGGCGGCCGGAATTCGTCGACTGGATCCGGTACCGAGGAGATCTGCC  
 GCC**CGGATCGCC**

ATGTCTCGCCGCAAGCAAGGCAAACCCAGCACTTAAGCAAACGGGAATTCGCCCCGAGCCTCTTGAAG  
 CCATTCTTACAGATGATGAACCAGACCACGGCCGTTGGGAGCTCCAGAAGGGGATCATGACCTCCTCAC  
 CTGTGGGCAGTGCCAGATGAACCTCCATTGGGGACATTCTATTTTTATCGAGCACAACGGAACAA  
 TGCAATGGCAGCCTCTGCTTAGAAAAAGCTGTGGATAAGCCACCTTCCCCTTACCAATCGAGATGAAAA  
 AAGCATCCAATCCCGTGGAGTTGGCATCCAGGTCACGCCAGAGGATGACGATTGTTTATCAACGTCATC  
 TAGAGGAATTTGCCCAAACAGGAACACATAGCAGATAAACTTCTGCACTGGAGGGGCTCTCTCCCCT  
 CGTTCTGCACATGGAGCTCTAATCCCCACGCCTGGGATGAGTGCAGAATATGCCCCGAGGGTATTTGTA  
 AAGATGAGCCCAGCAGCTACACATGTACAATTGCAAACAGCCATTACCAGTGCATGGTTTCTCTTGCA  
 ACACGCACAGAACACTCATGGATTAAGAATCTACTTAGAAAGCGAACACGGAAGTCCCCTGACCCGCGG  
 GTTGGTATCCCTTCAGGACTAGGTGCAGAATGTCTTCCAGCCACCTCTCCATGGGATTCATATTGCGAG  
 ACAATAACCCCTTAACTGCTAAGAATACCAGGATCAGTATCGAGAGAGGCTTCCGGCCTGGCAGAAGG  
 GCGTTTTCCACCCACTCCCCCTGTTTAGTCCACCACCGAGACATCACTTGGACCCCAACCGCATAGAG  
 CGCCTGGGGGCGGAAGAGATGGCCCTGGCCACCATCACCCGAGTGCCTTGGACAGGGTGTGCGTTGA  
 ATCCAATGGCTATGGAGCCTCCCGCCATGGATTCTCTAGGAGACTTAGAGAGCTGGCAGGGAACACGTC  
 TAGCCCACCGTGTCCCAGGCCGCGCCAGCCCTATGCAAAGTTACTGCAACATTCCAGCCAGGTAGC  
 AAGCCGCCCTTCTGGCAGCAGCCCTCCCTCTGCAATCCGCCCTCTCCCTCCAGCCCGCGG  
 TCAAGTCCAAGTCATGCGAGTTCTGGCAAGACGTTCAAATTTAGAGCAACCTGGTGGTGCACCGGG  
 CAGCCACACGGGGGAGAAGCCCTACAAGTGCAACCTGTGCGACACGCGTGCACCCAGGCCAGCAAGCTG  
 AAGCGCCACATGAAGACGCACATGCACAAATCGTCCCCATGACGGTCAAGTCCGACGACGGTCTCTCCA  
 CCGCCAGCTCCCGGAACCCGGCACCAGCGACTTGGTGGGCGAGCCAGCAGCGCGCTCAAGTCCGTGGT  
 GGCCAAGTTCAAGAGCGAGAACGCCAACCTGATCCCGGAGAACGGGGACGAGGAGGAAGAGGAGGAC  
 GACGAGGAAGAGGAAGAAGAGGAGGAAGAGGAGGAGGAGGAGTACGCGAGAGCGAGAGGGTGGACTACG  
 GCTTCGGGCTGAGCCTGGAGGCGCGGCCACCACGAGAACAGCTCGCGGGGCGCGGTGTTGGGCGTGGG  
 CGACGAGAGCCGCGCCCTGCCGACGTCATGCAGGGCATGGTGTCTAGCTCCATGCAGCACTTCAGCGAG  
 GCCTTCCACCAGTCTCTGGGCGAGAAGCATAAGCGCGGCCACCTGGCCGAGGCCGAGGGCCACAGGGACA  
 CTTGCGACGAAGACTCGGTGGCCGGCGAGTCGGACCGCATAGACGATGGCACTGTTAATGGCCGCGGCTG  
 CTCCCCGGGCGAGTGGGCTCGGGGGGCTGTCCAAAAGCTGCTGCTGGGCAGCCCCAGCTCGCTGAGC  
 CCCTTCTTAAGCGCATCAAGCTCGAGAAGGAGTTCGACCTGCCCCGGCCGCGATGCCAACACGGAGA  
 ACGTGTACTCGCAGTGGCTCGCCGGCTACGCGGCCCTCCAGGCAGCTCAAAGATCCCTTCTTAGCTTCGG  
 AGACTCCAGACAATCGCCTTTGGCTCTCGTGGGAGCACTCTCGGAGAACGGGAGCTTGGCTTCTCC  
 ACACCGCCCGGGGAGCTGGACGGAGGGATCTCGGGGCGCAGCGGCACGGGAAGTGGAGGGAGCACGCCCC  
 ATATTAGTGGTCCGGGCCCGGCCAGGCCAGCTCAAAGAGGGGACAGCGCAGCGACACTTGTGAGTACTG  
 TGGAAAGTCTTCAAGAAGTGTAGCAATCTCACTGTCCACAGGAGAAGCCACAGGGCGAAAGCCCTTAT  
 AAATGCGAGCTGTGCAACTATGCCTGTGCCAGAGTAGCAAGCTACCAGGCACATGAAAACGCATGGCC  
 AGGTGGGAAGGACGTTTACAAATGTGAAATTTGTAAGATGCCTTTTAGCGTGTACAGTACCCTGGAGAA  
 ACACATGAAAAAATGGCAGAGTATCGAGTGTGAATAATGATATAAAAATGAA

**ACGGGCCGCTCGAGCAGAACTCATCTCAGAAGAGGATCTGGCAGCAATGATATCCTGGA**  
**TTACAAGGATGACGACGATAAGGTTTAA**

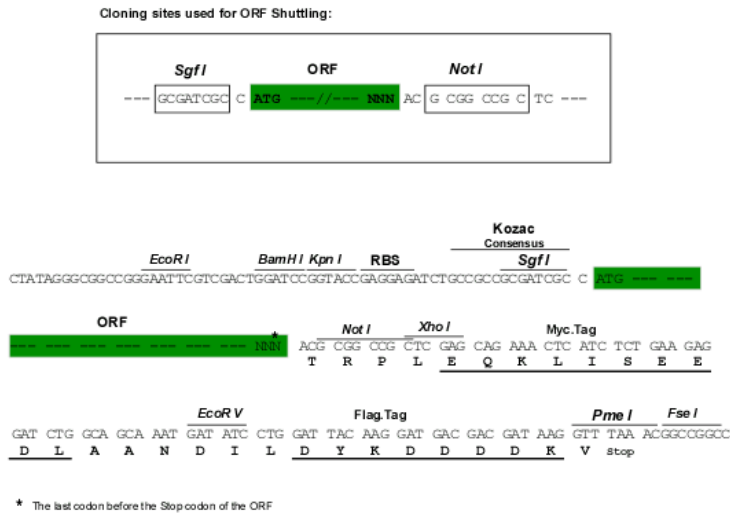
**Protein Sequence:** >RC219567 representing NM\_022893  
Red=Cloning site Green=Tags(s)

MSRRKQGKPKHL SKREFSPEPLEA ILTDDEPDHGPLGAPEGDHLLTCGQCQMNFP L GDILIFIEHKR KQ  
CNGSLCLEKAVDKPPSPSPIEMKKASNPVEVGIQVTPEDDDCLSTSSRGICPKQEHIADKLLHWRGLSSP  
RSAHGAL IPTPGMSAEYAPQGICKDEPSSYTCTTCKQPFTSAWFL LQHAQNT HGLRIYLESEHGSP L TPR  
VGIPSGLGAECPSQPPLHGIHIADNNPFNLLRIPGSVSREASGLAEGRF PPTPLFSPPPRHHLDPHRIE  
RLGAEEMALATHHPSAFDRVLR LNP MAMEPPAMDFSRRLRELAGNTSSPPLSPGRPSMQRL LQPFQPGS  
KPPFLATPPLPPLQSAPPPSQPPVKS KSCFCGKTFKFQSNL VVHRRSHTGEKPYKCNLCDHACTQASKL  
KRHMKTHMHKSSPMTVKSD DGLSTASSPEPGTSDLVGSASSALKSVVAKFKSENDPNLIPENGDEEEEEEED  
DEEEEEEEEEEEEEELTESERVDYGFGLSLEAARHHENSSRGAVVGVGDES RALPDVMQGMV LSSMQHFSE  
AFHQVLGEKHKRGHLAEAEGRDTCDEDSVAGESDRIDDGTVNGRGCSPGESASGGLSKKLL LGGSPSSLS  
PFSKRILEKEFDLPPAAMPNTENVYSQWLAGYAASRQLKDPFLSFGDSRQSPFASSEHSENGSLRFS  
TPPGELDGGISGRSGTGSGGSTPHISGPGGRPSKEGRRSDTCEYCGKVFKNCSNLTVHRRSHTGERPY  
KCELCNYACAQSSKLTRHMKTHGQVGKDVYKCEICKMPFSVYSTLEKHMKKWHS DRVLNNDIKTE

TRRLEQKLI SEEDLAANDILDYKDDDDKV

**Chromatograms:** [https://cdn.origene.com/chromatograms/mk6274\\_h10.zip](https://cdn.origene.com/chromatograms/mk6274_h10.zip)

**Restriction Sites:** Sgfl-NotI

**Cloning Scheme:**


**ACCN:** NM\_022893

**ORF Size:** 2505 bp

**OTI Disclaimer:** The molecular sequence of this clone aligns with the gene accession number as a point of reference only. However, individual transcript sequences of the same gene can differ through naturally occurring variations (e.g. polymorphisms), each with its own valid existence. This clone is substantially in agreement with the reference, but a complete review of all prevailing variants is recommended prior to use. [More info](#)

**OTI Annotation:** This clone was engineered to express the complete ORF with an expression tag. Expression varies depending on the nature of the gene.

**Components:** The ORF clone is ion-exchange column purified and shipped in a 2D barcoded Matrix tube containing 10ug of transfection-ready, dried plasmid DNA (reconstitute with 100 ul of water).

**Reconstitution Method:**

1. Centrifuge at 5,000xg for 5min.
2. Carefully open the tube and add 100ul of sterile water to dissolve the DNA.
3. Close the tube and incubate for 10 minutes at room temperature.
4. Briefly vortex the tube and then do a quick spin (less than 5000xg) to concentrate the liquid at the bottom.
5. Store the suspended plasmid at -20°C. The DNA is stable for at least one year from date of shipping when stored at -20°C.

**RefSeq:** [NM\\_022893.2](#), [NP\\_075044.2](#)

**RefSeq Size:** 5963 bp

**RefSeq ORF:** 2508 bp

**Locus ID:** 53335

**UniProt ID:** [Q9H165](#)

**Cytogenetics:** 2p16.1

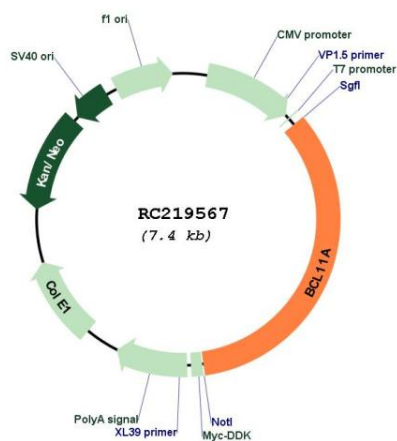
**Domains:** zf-C2H2

**Protein Families:** Transcription Factors

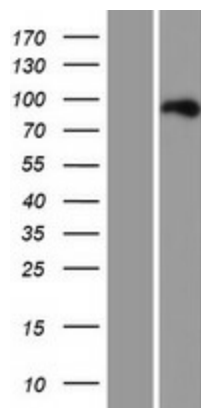
**MW:** 91 kDa

**Gene Summary:** This gene encodes a C2H2 type zinc-finger protein by its similarity to the mouse Bcl11a/Evi9 protein. The corresponding mouse gene is a common site of retroviral integration in myeloid leukemia, and may function as a leukemia disease gene, in part, through its interaction with BCL6. During hematopoietic cell differentiation, this gene is down-regulated. It is possibly involved in lymphoma pathogenesis since translocations associated with B-cell malignancies also deregulates its expression. Multiple transcript variants encoding several different isoforms have been found for this gene. [provided by RefSeq, Jul 2008]

## Product images:



Circular map for RC219567



Western blot validation of overexpression lysate (Cat# [LY411466]) using anti-DDK antibody (Cat# [TA50011-100]). Left: Cell lysates from untransfected HEK293T cells; Right: Cell lysates from HEK293T cells transfected with RC219567 using transfection reagent MegaTran 2.0 (Cat# [TT210002]).