

Product datasheet for RC219565

C21orf91 (NM_001100420) Human Tagged ORF Clone

Product data:

Product Type:	Expression Plasmids
Product Name:	C21orf91 (NM_001100420) Human Tagged ORF Clone
Tag:	Myc-DDK
Symbol:	C21orf91
Synonyms:	C21orf14; C21orf38; CSSG1; EURL; YG81
Mammalian Cell Selection:	Neomycin
Vector:	pCMV6-Entry (PS100001)
E. coli Selection:	Kanamycin (25 ug/mL)
ORF Nucleotide Sequence:	>RC219565 representing NM_001100420 Red=Cloning site Blue=ORF Green=Tags(s)

TTTTGTAATACGACTCACTATAGGGCGGCCGGAATTCGTCGACTGGATCCGGTACCGAGGAGATCTGCC
GCC**CGGATCGCC**

ATGAACGAAGAGGAGCAGTTTGTAAACATTGATTTGAATGATGACAACATTTGCAGTGTTTGTAACTGG
GAACAGACAAAGAACTCTCCTTCTGCCACATTTGTTTGGAGCTAAATATTGAGGGGGTACCAAAGTC
TGATCTCTTGACACCAAATCATTAAGGGGCCATAAAGACTGCTTTGAAAAATACCATTTAATTGCAAAC
CAGGGTTGTCCTCGATCTAAGCTTTCAAAAAGTACTTATGAAGAAGTTAAAACCATTTTGTAGTAAGAAGA
TAACTGGATTGTGCAGTATGCACAAAATAAGGATCTGGATTCTGATTCTGAATGTTCTAAAAACCCCA
GCATCATCTGTTAATTTCAAGCATAAGCCAGAAGAAAAATTACTCCACAGTTTACTCCCAAGTACCA
AAATATTCTGCAAAATGGATAGATGGAAGTGCAGGTGGCATCTCTAACTGTACACAAAGATTTTGGAGC
AGAGGGAAAAATACAGACTTTGGACTTTCTATGTTACAAGATTCAGGTGCCACTTTATGTCGTAACAGTGT
ATTGTGGCCTCATAGTCAACACAGGCACAGAAAAAGAGACAATCTCTAGTCCAGAGGCTAATGTC
CAGACCCAGCATCCATTACAGCAGAGAGGAATTGAATTCGATGACTCTTGGTGAGGTAGAGCAACTGA
ATGCAAAGCTCTACAGCAAATCCAGGAAGTTTTTGAAGAGTTAACTACCAAGTGAAGAAAAAGATTC
TTTGGCCTCACAGCTCCATGTCCGCCACGTTGCCATCGAACAGCTTCTGAAGAAGTGTCTAAGTTACCA
TGCTCTGAAGTAGGGCGAACAGGAATGAAGTCGCACCTACCCATAAACAAC

ACGCGTACGCGGCCGCTCGAGCAGAAACTCATCTCAGAAGAGGATCTGGCAGCAAATGATATCCTGGATT
ACAAGGATGACGACGATAAGGTTTAA



[View online »](#)

Protein Sequence: >RC219565 representing NM_001100420
Red=Cloning site Green=Tags(s)

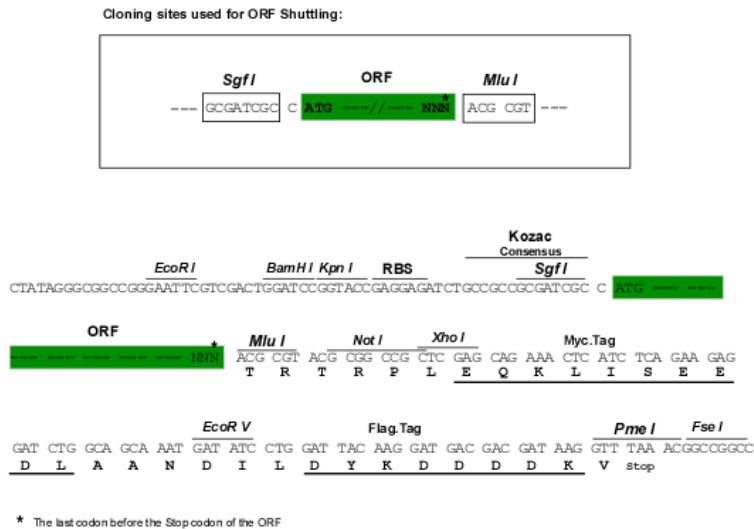
MNEEEQFVNIDLNDNICSVCKLGTDKETLSFCHICFELNIEGVPKSDLLHTKSLRGHKDCFEKYHLIAN
 QGCPRSKLSKSTYEEVKTILSKKINWIVQYAQNKDLSDSECSKNPQHHLFNRHKPEEKLLPQFDSQVP
 KYSAKWIDGSAGGISNCTQRILEQRENTDFGLSMLQDSGATLCRNSVLWPHSHNQAKKEETISSPEANV
 QTQHPHYSREELNSMTLGEVEQLNAKLLQQIQEVFEELTHQVQEKDSLASQLHVRHVAIEQLLKNC SKLP
 CLQVGRGTMKSHLPINN

TRTRPLEQKLISEEDLAANDILDYKDDDDKV

Chromatograms: https://cdn.origene.com/chromatograms/mk8050_d03.zip

Restriction Sites: SgfI-MluI

Cloning Scheme:



ACCN: NM_001100420

ORF Size: 891 bp

OTI Disclaimer: The molecular sequence of this clone aligns with the gene accession number as a point of reference only. However, individual transcript sequences of the same gene can differ through naturally occurring variations (e.g. polymorphisms), each with its own valid existence. This clone is substantially in agreement with the reference, but a complete review of all prevailing variants is recommended prior to use. [More info](#)

OTI Annotation: This clone was engineered to express the complete ORF with an expression tag. Expression varies depending on the nature of the gene.

Components: The ORF clone is ion-exchange column purified and shipped in a 2D barcoded Matrix tube containing 10ug of transfection-ready, dried plasmid DNA (reconstitute with 100 ul of water).

Reconstitution Method:

1. Centrifuge at 5,000xg for 5min.
2. Carefully open the tube and add 100ul of sterile water to dissolve the DNA.
3. Close the tube and incubate for 10 minutes at room temperature.
4. Briefly vortex the tube and then do a quick spin (less than 5000xg) to concentrate the liquid at the bottom.
5. Store the suspended plasmid at -20°C. The DNA is stable for at least one year from date of shipping when stored at -20°C.

RefSeq: [NM_001100420.2](#)

RefSeq Size: 5451 bp

RefSeq ORF: 894 bp

Locus ID: 54149

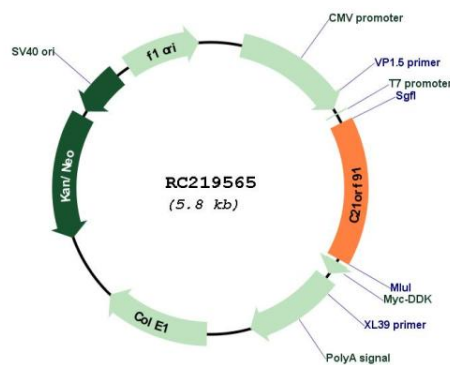
UniProt ID: [Q9NYK6](#)

Cytogenetics: 21q21.1

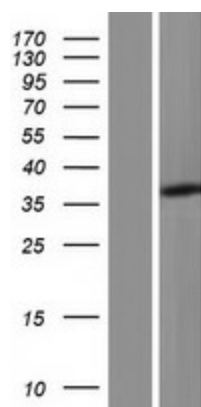
MW: 33.8 kDa

Gene Summary: Plays a role in cortical progenitor cell proliferation and differentiation. Promotes dendritic spine development of post-migratory cortical projection neurons by modulating the beta-catenin signaling pathway.[UniProtKB/Swiss-Prot Function]

Product images:



Circular map for RC219565



Western blot validation of overexpression lysate (Cat# [LY420259]) using anti-DDK antibody (Cat# [TA50011-100]). Left: Cell lysates from untransfected HEK293T cells; Right: Cell lysates from HEK293T cells transfected with RC219565 using transfection reagent MegaTran 2.0 (Cat# [TT210002]).