

Protein Sequence: >RC219549 representing NM_016638
Red=Cloning site Green=Tags(s)

MERAGPAGEEGGAREGRLLPRAPGAWL RACAERAALVGAASADTGVRGCGARGPAPLLASAGGGRARD
 GTWGVRTKGSGAALPSRPASRAAPRPEASSPPLPLEKARGGLSGPQGRARGAMAHVGSRRKRSRSRSR
 GRGSEKRKKKSRKDTSRNCSASTSQERSKQKARRRTRSSSSSSSSSSSSSSSSSSSSSDGRKKRGK
 YKDKRRRKKKKRKLKKGKEKAEAQVEALPGPSLDQWHR SAGEEEDGPVLTDEQKSRIQAMKPMTKEE
 WDARQSIIRKVDPETGRTRLIKGDGEVLEEIVTKERHREINKQATR GDCLAFQMRAGLLP

TRTRPLEQKLISEEDLAANDILDYKDDDDKV

Chromatograms: https://cdn.origene.com/chromatograms/mk8019_f12.zip

Restriction Sites: SgfI-MluI

Cloning Scheme:



ACCN: NM_016638

ORF Size: 1023 bp

OTI Disclaimer: The molecular sequence of this clone aligns with the gene accession number as a point of reference only. However, individual transcript sequences of the same gene can differ through naturally occurring variations (e.g. polymorphisms), each with its own valid existence. This clone is substantially in agreement with the reference, but a complete review of all prevailing variants is recommended prior to use. [More info](#)

OTI Annotation: This clone was engineered to express the complete ORF with an expression tag. Expression varies depending on the nature of the gene.

Components: The ORF clone is ion-exchange column purified and shipped in a 2D barcoded Matrix tube containing 10ug of transfection-ready, dried plasmid DNA (reconstitute with 100 ul of water).

Reconstitution Method:

1. Centrifuge at 5,000xg for 5min.
2. Carefully open the tube and add 100ul of sterile water to dissolve the DNA.
3. Close the tube and incubate for 10 minutes at room temperature.
4. Briefly vortex the tube and then do a quick spin (less than 5000xg) to concentrate the liquid at the bottom.
5. Store the suspended plasmid at -20°C. The DNA is stable for at least one year from date of shipping when stored at -20°C.

RefSeq: [NM_016638.2](#), [NP_057722.2](#)

RefSeq Size: 1321 bp

RefSeq ORF: 657 bp

Locus ID: 51329

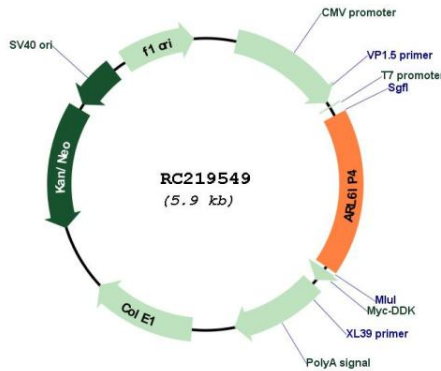
UniProt ID: [Q66PJ3](#)

Cytogenetics: 12q24.31

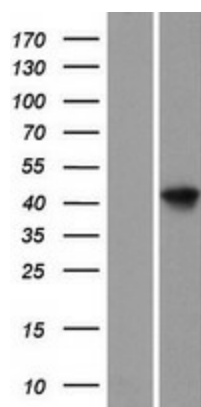
MW: 36.4 kDa

Gene Summary: Involved in modulating alternative pre-mRNA splicing with either 5' distal site activation or preferential use of 3' proximal site. In case of infection by Herpes simplex virus (HSV1), may act as a splicing inhibitor of HSV1 pre-mRNA.[UniProtKB/Swiss-Prot Function]

Product images:



Circular map for RC219549



Western blot validation of overexpression lysate (Cat# [LY413884]) using anti-DDK antibody (Cat# [TA50011-100]). Left: Cell lysates from untransfected HEK293T cells; Right: Cell lysates from HEK293T cells transfected with RC219549 using transfection reagent MegaTran 2.0 (Cat# [TT210002]).