

Product datasheet for RC219535

P2X2 (P2RX2) (NM_012226) Human Tagged ORF Clone

Product data:

Product Type:	Expression Plasmids
Product Name:	P2X2 (P2RX2) (NM_012226) Human Tagged ORF Clone
Tag:	Myc-DDK
Symbol:	P2X2
Synonyms:	DFNA41; P2X2
Mammalian Cell Selection:	Neomycin
Vector:	pCMV6-Entry (PS100001)
E. coli Selection:	Kanamycin (25 ug/mL)
ORF Nucleotide Sequence:	>RC219535 representing NM_012226 Red=Cloning site Blue=ORF Green=Tags(s)

TTTTGTAATACGACTCACTATAGGGCGGCCGGAATTCGTCGACTGGATCCGGTACCGAGGAGATCTGCC
GCCCGCATCGCC

ATGGCCGCCGCCAGCCCAAGTACCCCGCGGGGCGACCGCCCGGCGCCTGGCCCGGGCTGCTGGTCCG
CCCTCTGGGACTACGAGACGCCAAGGTGATCGTGGTACGTATTCATCGTGCAGAAAAGCTACCAGGAGA
GCGAGACGGGCCCGAGAGCTCCATCATCAACAGGTCAAGGGGATCACCACGTCGAGCACAAGTGTG
GGACGTGGAGGAGTACGTGAAGCCCCCGAGGCCCTGAGGACTGGGCGCTGTGTGCCCTATTACCAGGGC
CCTCCAAGACCTGCGAGGTGTTCCGCTGGTCCCGGTGGAAGATGGGGCCTCTGTGAGCAATTTCTGGG
TACGATGGCCCCAAATTTACCATCCTCATCAAGAACAGCATCCACTACCCCAAATTCACCTTCTCCAAG
GGCAACATCGCCGACCGCACAGACGGGTACCTGAAGCGCTGCACGTTCCACGAGGCCCTCCGACCTTACT
GCCCCATCTTCAAGCTGGGCTTTATCGTGGAGAAGGCTGGGGAGAGCTTACAGAGCTCGCACACAAGGG
TGGTGTGATCGGGGTCATTATCAACTGGGACTGTGACCTGGACCTGCCTGCATCGGAGTGAACCCCAAG
TACTCCTTCCGGAGGCTTGACCCCAAGCACGTGCCTGCCTCGTCAGGCTACAACCTCAGGTTTGCCAAAT
ACTACAAGATCAATGGCACCACCACCCGACGCTCATCAAGGCCACGGGATCCGCATTGACGTCATTGT
GCATGGACAGGCCGGGAAGTTGAGCCTGATTCACCATTATTAATCTGGCCACAGCTCTGACTTCCGTC
GGGTGGGCTCCTTCTGTGCGACTGGATCTTGCTAACATTGTAACAAAACAAGGTCTACAGCCATA
AGAAATTTGACAAGGTGTGACGCCGAGCCACCCCTCAGGTAGCTGGCCTGTGACCTTGGCCGTGTATT
GGGCCAGGCCCTCCCGAACCCGGCCACCGCTCCGAGGACCAGCACCCAGCCCTCCATCAGGCCAGGAG
GGCCAACAAGGGGAGAGTGTGGCCAGCCTTCCCGCCCTGCGGCTTGCCCCATCTGTGCCCTTCTG
AGCAGATGGTGGACACTCCTGCCTCCGAGCCTGCCAAGCCTCCACACCCACAGACCCCAAGGTTTGGC
TCAACTC

ACGGGTACGCGGCCGCTCGAGCAGAAACTCATCTCAGAAGAGGATCTGGCAGCAATGATATCCTGGATT
ACAAGGATGACGACGATAAGGTTTAA



[View online >](#)

Protein Sequence: >RC219535 representing NM_012226
Red=Cloning site Green=Tags(s)

```
MAAAQPKYPAGATARRLARGCWSALWDYETPKVI VVRIHRAEKL PGERDGPRELHHHQGGDHHVRAQSV
GRGGVREAPRGLRTGRCVPYYQGPKTCEVFGWCPVEDGASVSQFLGTMAPNFTILIKNSIHYPKFHFSK
GNIADRTDGYLKRCTFHEASDL YCPIFKLGFIVEKAGESFTELAHKGGVIGVIINWDCDLDPASECNPK
YSFRRLLDPKHVPASSGYNFRFAKYKINGTTTRTLIKAYGIRIDVIVHGQAGKFSLIPTIINLATALTSV
GVGSFLCDWILLTFMKNKVYSHKKFDKVC TSPHPSGSWPVTLARVLGQAPPEPGHRSEDQHPSPPSGQE
GQQGAECGPAFPPLRPCPISAPSEQMVDTPASEPAQASTPTDPKGLAQL
```

TRTRPLEQKLISEEDLAANDILDYKDDDDKV

Chromatograms: https://cdn.origene.com/chromatograms/mk8076_h04.zip

Restriction Sites: SgfI-MluI

Cloning Scheme:



ACCN: NM_012226

ORF Size: 1197 bp

OTI Disclaimer: The molecular sequence of this clone aligns with the gene accession number as a point of reference only. However, individual transcript sequences of the same gene can differ through naturally occurring variations (e.g. polymorphisms), each with its own valid existence. This clone is substantially in agreement with the reference, but a complete review of all prevailing variants is recommended prior to use. [More info](#)

OTI Annotation: This clone was engineered to express the complete ORF with an expression tag. Expression varies depending on the nature of the gene.

Components: The ORF clone is ion-exchange column purified and shipped in a 2D barcoded Matrix tube containing 10ug of transfection-ready, dried plasmid DNA (reconstitute with 100 ul of water).

Reconstitution Method:

1. Centrifuge at 5,000xg for 5min.
2. Carefully open the tube and add 100ul of sterile water to dissolve the DNA.
3. Close the tube and incubate for 10 minutes at room temperature.
4. Briefly vortex the tube and then do a quick spin (less than 5000xg) to concentrate the liquid at the bottom.
5. Store the suspended plasmid at -20°C. The DNA is stable for at least one year from date of shipping when stored at -20°C.

RefSeq: [NM_012226.5](#)

RefSeq Size: 1614 bp

RefSeq ORF: 1200 bp

Locus ID: 22953

UniProt ID: [Q9UBL9](#)

Cytogenetics: 12q24.33

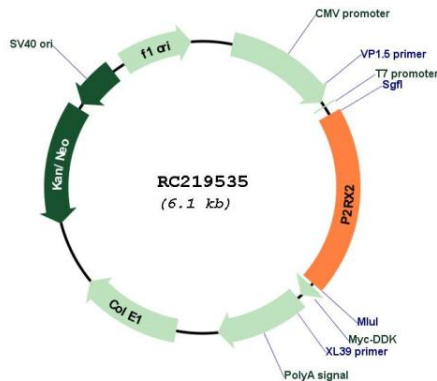
Protein Families: Druggable Genome, Ion Channels: ATP Receptors, Transmembrane

Protein Pathways: Calcium signaling pathway, Neuroactive ligand-receptor interaction

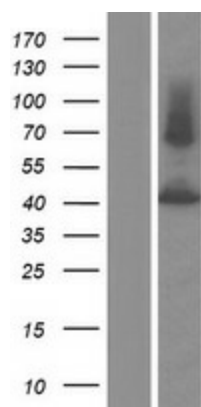
MW: 43.5 kDa

Gene Summary: The product of this gene belongs to the family of purinoceptors for ATP. This receptor functions as a ligand-gated ion channel. Binding to ATP mediates synaptic transmission between neurons and from neurons to smooth muscle. Multiple transcript variants encoding distinct isoforms have been identified for this gene. [provided by RefSeq, Aug 2013]

Product images:



Circular map for RC219535



Western blot validation of overexpression lysate (Cat# [LY415901]) using anti-DDK antibody (Cat# [TA50011-100]). Left: Cell lysates from untransfected HEK293T cells; Right: Cell lysates from HEK293T cells transfected with RC219535 using transfection reagent MegaTran 2.0 (Cat# [TT210002]).