

## Product datasheet for RC219533

### ODF3 (NM\_053280) Human Tagged ORF Clone

#### Product data:

Product Type:	Expression Plasmids
Product Name:	ODF3 (NM_053280) Human Tagged ORF Clone
Tag:	Myc-DDK
Symbol:	ODF3
Synonyms:	CT135; SHIPPO1; TISP50
Mammalian Cell Selection:	Neomycin
Vector:	pCMV6-Entry (PS100001)
E. coli Selection:	Kanamycin (25 ug/mL)
ORF Nucleotide Sequence:	>RC219533 ORF sequence Red=Cloning site Blue=ORF Green=Tags(s)

TTTTGTAATACGACTCACTATAGGGCGGCCGGAATTCGTCGACTGGATCCGGTACCGAGGAGATCTGCC  
GCC**CGATCGCC**

ATGACGGAGGAGGTATGGATGGGTACCTGGAGACCCCATCGCCCCGGGGACCCATCATGGCCCTCTACA  
GCAGCCCTGGACCCAAGTACCTGATTCCACCAACAACAGGCTTCATGAAGCACACGCCACCAAGCTGCG  
TGCACCGCCTACAGCTCCGTGGGGCCCCATGCTCCTGGCAGAGAAGTCTCCAGGGCCCCGTTAC  
AATGTAACCCCAAGATACTGAGGACTGGCAAGGACCTTGCCCTGCCTACTCCATCCTGGGGCGCTACC  
AAACCAAGACCATGCTGACTCCTGGTCCAGGTGACTACTTCCAGAGAAATCCACCAAGTACGTGTTTCA  
CTCAGCACCCAGCCACTCCATCTCTGCCCGGACAAAGGCATTCCGAGTGGACAGCACCCAGGCCCGCT  
GCGTACATGCTGCCCATGGTAATGGGGCCAATACCGTCGGCAAGGCCTCCAGCCCTCCTTTTCCATCA  
AGGGCCGAGCAAGCTGGGCGGCTTCAGCGACGACCTACACAAGACCCAGGTCCCGCAGCCTACCGCCA  
AACTGATGTGCGGGTGACCAAGTTCAAGGCTCCGAGTACACCATGGCTGCCCGTGTGGAGCCCCAGGG  
GACAAGACCCTCAAGCCAGGACCAGGCGCCACAGCCCTGAGAAGGTGACCCTGACCAAGCCCTGCGCCC  
CAGTTGTCACCTTCGGCATCAAACACTCTGATTACATGACTCCCTGCTGGTTGATGTGGAA

**ACGCGT**ACGCGGCCGCTCGAGCAGAAACTCATCTCAGAAGAGGATCTGGCAGCAAATGATATCCTGGATT  
ACAAGGATGACGACGATAAGGTTTAA



[View online »](#)

**Protein Sequence:** >RC219533 protein sequence  
 Red=Cloning site Green=Tags(s)

MTEEVWMGTWRPHRPRGPIMALYSSPGPKYLIPPTTGFMKHTPTKLRAPAYSFRGAPMLLAENCSPGPRY  
 NVNPKILRTGKDLGPAYSILGRYQTKMLTPGPGDYFPEKSTKYVFDAPSISARTKAFRVDSTPGPA  
 AYMLPMVMGPNTVGKASQPSFSIKGRSKLGGFSDDLHKTPGPAAYRQTDVVRVTKFKAPQYTMAARVEPPG  
 DKTLKPGPGAHSPEKVTLTKPCAPVVTFGIKHSDYMTPLLDVDE

TRTRPLEQKLISEEDLAANDILDYKDDDDKV

**Chromatograms:** [https://cdn.origene.com/chromatograms/mk6466\\_f05.zip](https://cdn.origene.com/chromatograms/mk6466_f05.zip)

**Restriction Sites:** SgfI-MluI

**Cloning Scheme:**

Cloning sites used for ORF Shuttling:



\* The last codon before the Stop codon of the ORF

**ACCN:** NM\_053280

**ORF Size:** 762 bp

**OTI Disclaimer:** The molecular sequence of this clone aligns with the gene accession number as a point of reference only. However, individual transcript sequences of the same gene can differ through naturally occurring variations (e.g. polymorphisms), each with its own valid existence. This clone is substantially in agreement with the reference, but a complete review of all prevailing variants is recommended prior to use. [More info](#)

**OTI Annotation:** This clone was engineered to express the complete ORF with an expression tag. Expression varies depending on the nature of the gene.

**Components:** The ORF clone is ion-exchange column purified and shipped in a 2D barcoded Matrix tube containing 10ug of transfection-ready, dried plasmid DNA (reconstitute with 100 ul of water).

**Reconstitution Method:**

1. Centrifuge at 5,000xg for 5min.
2. Carefully open the tube and add 100ul of sterile water to dissolve the DNA.
3. Close the tube and incubate for 10 minutes at room temperature.
4. Briefly vortex the tube and then do a quick spin (less than 5000xg) to concentrate the liquid at the bottom.
5. Store the suspended plasmid at -20°C. The DNA is stable for at least one year from date of shipping when stored at -20°C.

**RefSeq:** [NM\\_053280.3](#), [NP\\_444510.2](#)

**RefSeq Size:** 1295 bp

**RefSeq ORF:** 765 bp

**Locus ID:** 113746

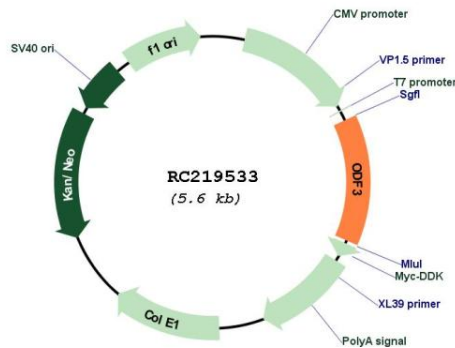
**UniProt ID:** [Q96PU9](#)

**Cytogenetics:** 11p15.5

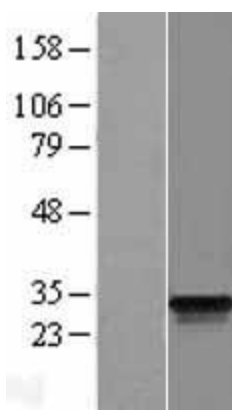
**MW:** 27.7 kDa

**Gene Summary:** ODF3 is a component of sperm flagella outer dense fibers, which add stiffness, elastic recoil, and protection against shearing forces during sperm movement.[supplied by OMIM, Apr 2004]

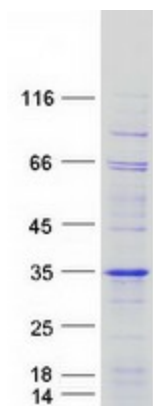
**Product images:**



Circular map for RC219533



Western blot validation of overexpression lysate (Cat# [LY409298]) using anti-DDK antibody (Cat# [TA50011-100]). Left: Cell lysates from untransfected HEK293T cells; Right: Cell lysates from HEK293T cells transfected with RC219533 using transfection reagent MegaTran 2.0 (Cat# [TT210002]).



Coomassie blue staining of purified ODF3 protein (Cat# [TP319533]). The protein was produced from HEK293T cells transfected with ODF3 cDNA clone (Cat# RC219533) using MegaTran 2.0 (Cat# [TT210002]).