

Product datasheet for RC219513

UBA1 (NM_153280) Human Tagged ORF Clone

Product data:

Product Type:	Expression Plasmids
Product Name:	UBA1 (NM_153280) Human Tagged ORF Clone
Tag:	Myc-DDK
Symbol:	UBA1
Synonyms:	A1S9; A1S9T; A1ST; AMCX1; CFAP124; GXP1; POC20; SMAX2; UBA1A; UBE1; UBE1X; VEXAS
Mammalian Cell Selection:	Neomycin
Vector:	pCMV6-Entry (PS100001)
E. coli Selection:	Kanamycin (25 ug/mL)
ORF Nucleotide Sequence:	>RC219513 representing NM_153280 Red=Cloning site Blue=ORF Green=Tags(s)

TTTTGTAATACGACTCACTATAGGGCGGCCGGAATTCGTCGACTGGATCCGGTACCGAGGAGATCTGCC
GCC**CGATCGCC**

ATGTCCAGCTCGCCGCTGTCCAAGAAACGTGCGTGTCCGGCCTGATCCAAAGCCGGTTCTAACTGCT
CCCCTGCCAGTCCGTGTTGTCCGAAGTGCCTCGGTGCCAACCAACGGAATGGCCAAGAACGGCAGTGA
AGCAGACATAGACGAGGGCCTTTACTCCGGCAGCTGTATGTTGGCCATGAGGCAATGAAGCGGCTC
CAGACATCCAGTGTCTGGTATCAGGCCTGCGGGCCTGGGCGTGGAGATCGCTAAGAACATCATCCTTG
GTGGGTCAAGGCTGTTACCCTACATGACCAGGCACTGCCAGTGGGCTGATCTTCTCCAGTTCTA
CCTGCGGGAGGAGACATCGGTAAAAACCGGGCCGAGGTATCACAGCCCCGCTCGCTGAGCTCAACAGC
TATGTGCCTGTCACCTACACTGGACCCCTCGTTGAGGACTTCCTTAGTGTTCCAGGTGGTGGTGC
TCACCAACACCCCTGGAGGACCAGCTGCGAGTGGGTGAGTTCTGTACAAACCGTGGCATCAAGCTGGT
GGTGGCAGACACGCGGGCCTGTTGGGAGCTTCTGTGACTTTGGAGAGGAAATGATCCTCACAGAT
TCCAATGGGGAGCAGCCACTCAGTGCTATGGTTCTATGGTTACCAAGGACAACCCCGGTGTGGTTACCT
GCCTGGATGAGGCCGACACGGGTTTGAGAGCGGGGACTTTGTCTCCTTTTCAGAAGTACAGGCAATGGT
TGAACCTCAACGAAATCAGCCCATGGAGATCAAAGTCTGGGTCTTATACCTTTAGCATCTGTGACACC
TCCAACCTCCGACTACATCCGTGGAGGATCGTCAGTCAGTCAAAGTACCTAAGAAGATTAGCTTTA
AATCCTTGGTGGCCTCACTGGCAGAACCTGACTTTGTGGTGACGACTTCGCAAGTTTTCTCGCCCTGC
CCAGCTGCACATTGGCTCCAGGCCCTGCACAGTTCTGTGCTCAGCATGGCCGGCCACCTCGGCCCCGC
AATGAGGAGGATGCAGCAGAAGTGGTAGCCTTAGCACAGGCTGTGAATGCTCGAGCCCTGCCAGCAGTGC
AGCAAAAATAACCTGGACGAGGACCTCATCCGGAAGCTGGCATA GTGGCTGCTGGGGATCTGGCACCCAT
AAACGCCTTCATTGGGGCCTGGCTGCCAGGAAGTCATGAAGGCCTGCTCCGGGAAGTTTCATGCCATC
ATGCAGTGGCTATACTTTGATGCCCTTGAGTGTCTCCCTGAGGACAAAGAGGTCTCACAGAGGACAAGT
GCCTCCAGCGCCAGAACCGTTATGACGGGCAAGTGGCTGTGTTTGGCTCAGACCTGCAAGAGAAGCTGG
CAAGCAGAAGTATTTCTGGTGGTGGGGGCCATTGGCTGTGAGCTGCTCAAGAACTTTGCCATGATT



[View online »](#)

GGGCTGGGCTGCGGGGAGGGTGGAGAAATCATCGTTACAGACATGGACACCATTGAGAAGTCAAATCTGA
 ATCGACAGTTTCTTTCCGGCCCTGGGATGTCACGAAGTTAAAGTCTGACACGGCTGCTGCAGCTGTGCG
 CCAAATGAATCCACATATCCGGGTGACAAGCCACCAGAACCGTGTGGGTCTGACACGGAGCGCATCTAT
 GATGACGATTTTTTCAAACCTAGATGGCGTGGCCAATGCCCTGGACAACGTGGATGCCCGCATGTACA
 TGGACCGCCGTGTGTCTACTACCGGAAGCCACTGCTGGAGTCAAGCACACTGGGCACCAAAAGGCAATGT
 GCAGGTGGTATCCCCTTCTGACAGAGTCGTACAGTTCCAGCCAGGACCACCTGAGAAGTCCATCCCC
 ATCTGTACCTGAAGAACTTCCCTAATGCCATCGAGCACACCCTGCAGTGGGCTCGGGATGAGTTGAAG
 GCCTCTTCAAGCAGCCAGCAGAAAATGTCAACCAAGTACCTCACAGACCCCAAGTTTGTGGAGCGAACACT
 GCGGCTGGCAGGCACTCAGCCCTTGGAGGTGCTGGAGGCTGTGCAGCGCAGCCTGGTGTGCAGCGACCA
 CAGACCTGGGCTGACTGCGTGACCTGGGCTGCCACCACTGGCACACCCAGTACTCGAACACATCCGGC
 AGCTGTGCACAACCTCCCTCTGACCAGCTCACAAGCTCAGGAGCGCGTTCTGGTCTGGGCCAAAACG
 CTGTCCACACCCGCTCACCTTGTGTCAACAATCCCCTGCATCTGGACTATGTGATGGCTGTGCCAAC
 CTGTTTGGCCAGACCTACGGGCTGACAGGCTCTCAGGACCAGCTGCTGTGGCCACATTCCTGCAGTCTG
 TGCAGTCCCCGAATCACCCCAAGTCTGGCGTCAAGATCCATGTTTCTGACCAGGAGCTGCAGAGCGC
 CAATGCCTCTGTTGATGACAGTCGTCTAGAGGAGCTCAAAGCCACTCTGCCAGCCAGACAAGCTCCCT
 GGATTCAGATGTACCCATTGACTTTGAGAAGGATGATGACAGCAACTTTCATATGGATTCATCGTGG
 CTGCATCCAACCTCCGGGCAGAAAATATGACATTCCTTCTGCAGACCGGCACAAGGCAAGCTGATTGC
 AGGGAAGATCATCCCAGCATTGCCACGACCACAGCAGCCGTGGTTGGCCTTGTGTGTCTGGAGCTGTAC
 AAGTTGTGCAGGGGCACCGACAGCTTGACTCCTACAAGAATGGTTTCTCAACTGGCCCTGCCTTTCT
 TTGGTTTCTGAACCCCTTGGCGACCCAGCTCACCAGTACTATAACCAAGAGTGGACATTGTGGGATCG
 CTTTGGAGTACAAGGGCTGCAGCCTAATGGTGAGGAGTAGCCCTCAAACAGTTCCTCGACTATTTAAG
 ACAGAGCACAATTAGAGATCACCATGCTGTCCAGGGCGTCCATGCTCTATTCCTTCTCATGCCAG
 CTGCCAAGCTCAAGGAACGGTTGGATCAGCCGATGACAGAGATTGTGAGCCGTGTGTCGAAGCGAAAAGCT
 GGGCCGACAGTGCAGGGCGTGGTCTGAGCTGTGCTGTAAACGAGAGCGGGCAGGATGTGAGGTT
 CCCTATGTCCGATACACCATCCGC

ACGCGTACGCGGCCGCTCGAGCAGAAAATCATCTCAGAAGAGGATCTGGCAGCAAATGATATCCTGGATT
 ACAAGGATGACGACGATAAGGTTTAA

Protein Sequence:

>RC219513 representing NM_153280
 Red=Cloning site Green=Tags(s)

MSSSPLSKKRRVSGPDPKPGSNCSQAQSVLSEVPSVPTNGMAKNGSEADIDEGLYSRQLYVLGHEAMKRL
 QTSSVLSGLRGLGVEIAKNIILGGVKAVTLHDQGTAWADLSSQFYLREEDIGKNRAEVSQPRLAELNS
 YVPVTAYTGPLVEDFLSGFQVVVL TNTPLEDQLRVGEFCHNRGIKLVVADTRGLFGQLFCDFGEEMILTD
 SNGEQPLSAMVSMVTKDNPVVTCLDEARHGFESGDFVSFSEVQGMVELNGNQPMIEKVLGPYTFISICDT
 SNFSDYIRGGIVSQVKVPKKISFKSLVASLAEPDFVVTDFAKFSRPAQLHIGFQALHQFCAQHGRPPRPR
 NEEDAAELVALAQAVNARALPAVQNNLDEDLIRKLAYVAAGDLAPINAFIGGLAAQEVMAKCSGKFMP
 MQWLYFDAL ECLPEDKEVLTEDKCLQRQNRDQVAVFGSDLQEKLGKQYFLVGAGAIGCELLKNFAMI
 GLGCGEGGEIIVTDMDTIEKSNLNRQFLFRPVDVTKLKSDTAAA AVRQMNPHIRVTS HQNRVGPDI
 DDDFFQNL DGVANALDNVDARMYMDRRCVYYRKP LLESGTLGTKGNVQVVIPFLTESYSSSQDPPEKSIP
 ICTLKNFPNAIEHTLQWARDEFELFKQPAENVNQYL TDPKFVERTLRLAGTQPLEVLEAVQRSLVLQRP
 QTWADCVTWACHHWHQYSNNIRQLLHNFPPDQL TSSGAPFWSGPKRCPHPLTFD VNNPLHLDYVMAAAN
 LFAQTYGLTGSQDRAAVATFLQSVQVPEFTPKSGVKIHVSDQELQSANASVDDSRLEELKATLPSDKLP
 GFKMYPIDFEKDDSNFHMDFIVAASNLAENYDIP SADRHKSKLIAGKIIPAIATTTAAVVGLVCLELY
 KVVQGHRLDSYKNGFLNLALPFFGFSEPLAAPRHQYNNQEWTLWDRFEVQGLQPNGEEMTLKQFLDYFK
 TEHKLEITMLSQGVSMLYSFFMPAAKLKERLDQPMTEIIVSRVSKRKLGRHVRLVLELCCNDESGEDVEV
 PYYRYTIR

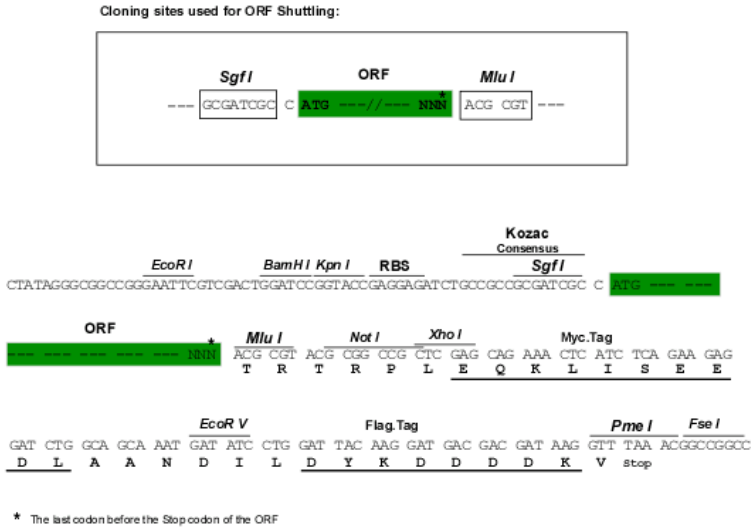
TRTRPLEQKLISEEDLAANDILDYKDDDDKV

Chromatograms:

https://cdn.origene.com/chromatograms/mg2877_a06.zip

Restriction Sites: SgfI-MluI

Cloning Scheme:



ACCN: NM_153280

ORF Size: 3174 bp

OTI Disclaimer: The molecular sequence of this clone aligns with the gene accession number as a point of reference only. However, individual transcript sequences of the same gene can differ through naturally occurring variations (e.g. polymorphisms), each with its own valid existence. This clone is substantially in agreement with the reference, but a complete review of all prevailing variants is recommended prior to use. [More info](#)

OTI Annotation: This clone was engineered to express the complete ORF with an expression tag. Expression varies depending on the nature of the gene.

Components: The ORF clone is ion-exchange column purified and shipped in a 2D barcoded Matrix tube containing 10ug of transfection-ready, dried plasmid DNA (reconstitute with 100 ul of water).

Reconstitution Method:

1. Centrifuge at 5,000xg for 5min.
2. Carefully open the tube and add 100ul of sterile water to dissolve the DNA.
3. Close the tube and incubate for 10 minutes at room temperature.
4. Briefly vortex the tube and then do a quick spin (less than 5000xg) to concentrate the liquid at the bottom.
5. Store the suspended plasmid at -20°C. The DNA is stable for at least one year from date of shipping when stored at -20°C.

RefSeq: [NM_153280.3](#)

RefSeq Size: 3483 bp

RefSeq ORF: 3177 bp

Locus ID: 7317

UniProt ID: [P22314](#)

Cytogenetics: Xp11.3

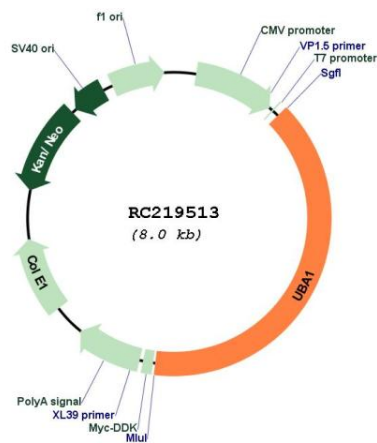
Domains: UBACT, ThiF

Protein Pathways: Parkinson's disease, Ubiquitin mediated proteolysis

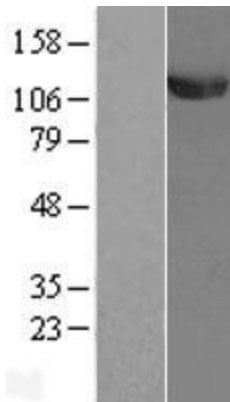
MW: 117.7 kDa

Gene Summary: The protein encoded by this gene catalyzes the first step in ubiquitin conjugation to mark cellular proteins for degradation. This gene complements an X-linked mouse temperature-sensitive defect in DNA synthesis, and thus may function in DNA repair. It is part of a gene cluster on chromosome Xp11.23. Alternatively spliced transcript variants that encode the same protein have been described. [provided by RefSeq, Jul 2008]

Product images:



Circular map for RC219513



Western blot validation of overexpression lysate (Cat# [LY407101]) using anti-DDK antibody (Cat# [TA50011-100]). Left: Cell lysates from untransfected HEK293T cells; Right: Cell lysates from HEK293T cells transfected with RC219513 using transfection reagent MegaTran 2.0 (Cat# [TT210002]).