

Product datasheet for RC219511

MOV10L1 (NM_018995) Human Tagged ORF Clone

Product data:

Product Type:	Expression Plasmids
Product Name:	MOV10L1 (NM_018995) Human Tagged ORF Clone
Tag:	Myc-DDK
Symbol:	MOV10L1
Synonyms:	CHAMP; DJ402G11.8
Mammalian Cell Selection:	Neomycin
Vector:	pCMV6-Entry (PS100001)
E. coli Selection:	Kanamycin (25 ug/mL)
ORF Nucleotide Sequence:	>RC219511 representing NM_018995 Red=Cloning site Blue=ORF Green=Tags(s)

TTTTGTAATACGACTCACTATAGGGCGGCCGGAATTCGTCGACTGGATCCGGTACCGAGGAGATCTGCC
GCC**CGATCGCC**

ATGCTGAGCCTCGCAGCCAAGCTGGTGGCCTTCTCTGGAGGACGGCGGACACCCTAGGGAGGAAGCCG
GGCAGCTGGAGCCCGAGCTCGCGGAAGGTGACACTAAGCTGAAAAGTGTACGGGGTGTCTGACAAGGTA
CTGCAGCGATTATGGCATGATTGATGATGATGACTACTTCTCCAGTGATGCTGTGACTAGCAGAGTGCTT
CTGAATGTTGGACAGGAAGTGATTGCAGTTGTGGAAGAAAATAAAGTGTCCAATGGACTGAAAGCAATCA
GGGTAGAAGCTGTCTCTGATAAGTGGGAAGACGACAGCAGAAACCATGGGAGTCCCTCAGACTGCGGCC
CCGAGTGTGATTGGCTGTGTGACTTCCCTGGTGGAGGGCGCAGGCTGTATCAGTCAGACCACCTACTTC
TCTCTGGAGAGTGTGTGCGAAGGCTTCGAGCCCTGCAAGGGAGACTGGGTGGAGGCTGAGTACCGGATCC
GGCCTGGCACGTGGAGCAGCGAAGCCACCTCAGTGAAGCCACTGAGATACAAGCGCGTGGACAAGGTCTG
CATCTCTAGCCTCTGTGGAAGGAACGGGGTGTAGAGGAAAGCATCTTCTTTACCTTGGACTCCTTGAAA
CTGCCAGATGGGTACACACCCCGGAGAGGTGACGTGGTCAATGCAGTGGTGGTGGAGAGCAGCCAGTCAT
GCTATGTCTGGAGGGCACTTTGTATGACCCTAGTGAAGAGGCGAGACGCCGCCCTGTTCATGAGGCCAC
TCATTTCTATGGAACGATTTTGTGAAGAACAAGGTGATATTGAAGTTACACAGGTGACGCATTTTGA
ACCCTAAAGGAAGGAAGAAGTAAAACCATGGTGTCTGGATAGAGAATAAAGGAGACATTCTCAAAC
TAGTCAGCTGTAACCTGGCTGGCTGGGATAAATCTAAACAATTCAGATTCCAATGCTGGATAAAGACCA
GATGTGCCCGTGGTATCTTTTGTCTGTTTCTGTTCCCTGAGAAGGAGAATTCATCAGATGAAAATATTAATTCA
TTAAATAGCCACACAAAAACAAAACCTCTCAGATGTCGGAGAGCAGTTTGGTGAACAACAGAGGAATCT
CTCCAGGTGATTGTACCTGTAAGGAGAAAAATGGAGAAAAAGACAACATTCTATCAAGGAAGCAGATGAC
AGAGCCTGAGCCTGGGGGCTTGTCCCTCCAGGGGAAAAACCTTATTGTGGTCATCTGTGACGGAAAA
AATCCTGGCCGCTGCAAGGAGCTCCTTTTGTCTGTTTTTCCGATTTCTAATTGGGCGATACCTTGAAG
TAAATGTTATCAGTGGGAGGAGTCACTAATTGCTGCGCGGAACCATTTTCTTGAAAAAGCTTAAAG
TTCACAAGCGTTAACATCCGCAAAAACACAGTGTGTGACCGCACAGAAAAGGAACTCAAGACGACAA



[View online »](#)

CTTCCAAGTTTTCTTCCCAATATCCAATCCCAGATAGACTTAGAAAATGTGTGGAACAAAAATTGACA
TCCTGACTTTCCAGCCATTACTTGCAGAGCTTCTGAACATGTCAAATTACAAGGAGAAGTTTTGACTTT
GCTGTGGCTTGAGGAGATTTATGCAGAAATGAACTGAAAGAGTATAACATGAGCGGGATCATCTTAAGA
AGGAATGGGGATCTGCTGGTCTGGAGGTCCCAGGGTTGGCCGAAGGGAGGCCTTCTCTACGCAGGTG
ATAAAGTATTTAAAACTCAAGAGTACAATGGACATGCCATCGAATACATCAGCTACGTGACTGAGAT
TCATGAAGAAGATGTAACCTTAAAAATTAATCCAGAATTTGAACAAGCCTATAACCTTTGAACCTATGGAT
GTGGAATTTACATATAATAGGACCACAAGCAGACGGTGTCACTTTGCACCTGAACACGTCCACTTAG
GTGTAAGAGTGTGTTTCCAGAAGAAATATTTTACAGTCTCCACAAGTGACGGGAAATTGGAACCATGC
ACAAGACACCAAAAGCAGTGGACAGTCCACCAGCAAAAAGAATAGAAAAAATGACGGACCAAGCTGAG
CATGGAACAGAGGAGAGGCGTGTGGTGACAAGGACCTGCCGGTCTGGCACCTTTACTGCAGAGATGA
GCGATTGGGTAGATGAAATTCAGACCCCTAAAGCAAGAAAGATGGAGTTTTTCAACCCAGTGCTAAATGA
AAATCAGAAGTTAGCAGTAAAAGGATTCTGAGTGGTACTGCCGTCCCCTCCCGTATATTCTCTTTGGA
CCTCTGGTACTGAAAGACAGTACAATAATAGAGGCTGTTTTACAGGTACACTTTGCCTTGCCGGACA
GTCGGATTTAGTCTGTGCGCCCTCAAACAGTGTCTGACCTCGTGTCTGCGGCTGCACGAGAGCAA
GGTGCTACAGCCGCCACCATGGTCCGGTGAACGCCACCTGCAGTTCCAGGAGATAGTTATTGACGCC
GTCAAACCGTATTGCAGAGACGGAGAAGACATCTGGAAAGCCTCACGCTTCCGGATAATCATCACCCAT
GCAGCAGCTCAGGGCTGTTTTACCAATAGGAGTGAGAGTTGGGCACTTCACTCACGTGTTTGTGGACGA
GGCTGGGCAGGCAAGTGAGCCGGAATGCCTCATTCTCTGGGGCTGATGTCGGACATCAGTGGCCAGATC
GTGCTGGCAGGAGACCCATGCAGCTCGGCCAGTCATTAAGTCCAGACTCGCCATGGCCTATGGGCTGA
ACGTGTCTTTTTGGAACGGCTGATGTCTCGACCCGCGTACCAGAGGGACGAAAAATGCTTTCGGTGTG
TGGCGCACATAATCCCCTGTTGGTCACAAAGCTGGTGAAGAACTACCGGTCCCACGAGGCCCTGTGATG
CTGCCCTCACGGCTGTTCTACCACAGGAACTCGAGGTCTGTGCGGACCCACAGTGGTGACCTCCTTGC
TGGGCTGGGAGAAGTTGCCTAAGAAAGGCTTCCCTCTCATCTTCCATGGTGTGCGGGGCAGCGAGGCAG
GGAGGGAAAAAGCCCATCGTGGTTCAACCCGGCCGAGGCCGTCCAGGTCTGCGCTACTGTGCCTCCTG
GCCACAGCATCTCCAGTCAGGTGTCTGCCAGCGACATTGGCGTCATCACGCCCTACCGGAAGCAGGTGG
AGAAAAATCAGAATCTTTTGCCTAATGTTGATCTGATGGATATAAAGGTTGGATCAGTAGAGGAGTTTCA
AGGACAAGAGTATCTGGTCATCATCTTTCGACCGTACGGTCAAATGAAGATAGATTTGAAGATGATCGA
TATTTTTTGGGTTTTCTGTCCAACCTAAAAAGATTTAATGTTGCAATCACCAGACCCAAAGCTTTGCTGA
TAGTGCTGGGAAACCCCATGTTCTCGTTCGAGACCCCTGTTTTGGTGTCTTGTGGAATACAGTATTAC
AAACGGTGTTCATGGGATGCGATTTACCTCCTGCACCTGCAGTCTCTGCAAACTGTGGCGAGGGGGTG
GCAGACCCCTCCTACCCAGTGGTCCAGAATCCACAGGACCAGAGAAGCATCAGGAGCCACG

ACGCGTACGCGGCCGCTCGAGCAGAACTCATCTCAGAAGAGGATCTGGCAGCAAATGATATCCTGGATT
ACAAGGATGACGACGATAAGGTTTAA

Protein Sequence: >RC219511 representing NM_018995
 Red=Cloning site Green=Tags(s)

```

MLSLAAKLVAFFWRTADTPREEAGQLEPELAEGDTKLKTVRGVVTRYCSDYGMIDDMIYFSSDAVTSRVL
LNVGQEVIAVVEENKVSINGLKAIRVEAVSDKWEDDSRNHGSPSDCGPRLIGCVTSLVEGAGCISQTTYF
SLESVCEGFEPCKGDWVEAEYRIRPGTWSSEATSVKPLRYKRVDKVCISLRCGRNGVLEESIFFTLDSLK
LPDGYTPRRGDVVNAVVESSQSCYVWRALCMTLVKRRDAAPVHEATHFYGTILLKNKGDIEVTQVTHFG
TLKEGRSKTMVIWIENKGDIPQNLVSKLAGWDKSKQFRFQMLDKDQMCPPVSVFVSVPEKENSNDENINS
LNSHTKNKTSQMSESSLVNNRGI SPGDCTCKGENGEKDNILSRKQMTPEPEPGLVPPGGKTFIVVICDGK
NPGRCKELLLLCSDFLIGRYLEVNVISGEESLIAAREPFSWKLLKSSQALTSAKTTVVVTAQKRNSRRQ
LPSFLPQYIPDRLRKCVEQKIDILTFQPLLAELLNMSNYKEKFTLLWLEEIIYAEMELKEYNMSGIILR
RNGDLLVLEVPGLAEGRPSLYAGDKLILKTQEYNGHAIEIYSYVTEIHEEDVTLKINPEFEQAYNFEPMD
VEFTYNRTTSRRCHFALEHVIHLGVKVLFP EEIILQSPQVTGNWNHAQDTKSSGQSTSCKNRKMTDQAE
HGTEERRVGDKDL PVLAPFTAEMSDWVDEIQTPKARKMEFFNPVLNENQKLAVKRILSGDCRPLPYILFG
PPGTGKTVTIIIEAVLQVHFALPDSRILVCAPSNSAADLVCLRLHESKVLQPATMVRV NATCRFEEIVIDA
VKPYCRDGEDIWKASRFRIIITTCSSSGLFYQIGVRVGHFTHVFVDEAGQASEPECLIPGLMSDISGQI
VLADGPMQLGPVIKSR LAMAYGLNVSFLERLMSRPAYQRDENAFGACGAHNPLLVTKLVKNYRSHEALLM
LPSRLFYHRELEV CADPTVVTSLLGWEKLPKKGFP LIFHGVRGSEAREGKSPSWFNPAEAVQVLR YCCLL
AHSISSQVSASDIGVITPYRKQVEKIRILLRNVDLMDIKVGSVEEFQGGQEYLVIIISTVRSNEDRFEDDR
YFLGFLSNSKRFNVAITRPKALLIVLGNPHVLVRDPCFGALLEYSITNGVYMGCDLPPALQSLQNCGEGV
ADPSYPVVPESTGPEKHQEPS
  
```

TRTRPLEQKLISEEDLAANDILDYKDDDDKV

Chromatograms: https://cdn.origene.com/chromatograms/mk8019_c07.zip

Restriction Sites: SgfI-MluI

Cloning Scheme:

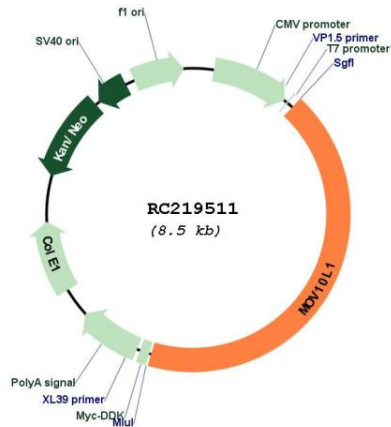


ACCN: NM_018995

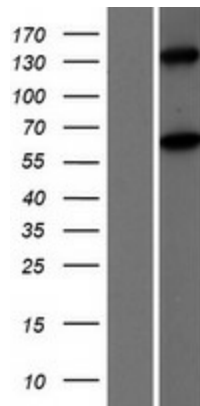
ORF Size: 3633 bp

OTI Disclaimer:	The molecular sequence of this clone aligns with the gene accession number as a point of reference only. However, individual transcript sequences of the same gene can differ through naturally occurring variations (e.g. polymorphisms), each with its own valid existence. This clone is substantially in agreement with the reference, but a complete review of all prevailing variants is recommended prior to use. More info
OTI Annotation:	This clone was engineered to express the complete ORF with an expression tag. Expression varies depending on the nature of the gene.
Components:	The ORF clone is ion-exchange column purified and shipped in a 2D barcoded Matrix tube containing 10ug of transfection-ready, dried plasmid DNA (reconstitute with 100 ul of water).
Reconstitution Method:	<ol style="list-style-type: none">1. Centrifuge at 5,000xg for 5min.2. Carefully open the tube and add 100ul of sterile water to dissolve the DNA.3. Close the tube and incubate for 10 minutes at room temperature.4. Briefly vortex the tube and then do a quick spin (less than 5000xg) to concentrate the liquid at the bottom.5. Store the suspended plasmid at -20°C. The DNA is stable for at least one year from date of shipping when stored at -20°C.
RefSeq:	NM_018995.3
RefSeq Size:	3910 bp
RefSeq ORF:	3636 bp
Locus ID:	54456
UniProt ID:	Q9BXT6
Cytogenetics:	22q13.33
MW:	135.1 kDa
Gene Summary:	This gene is similar to a mouse gene that encodes a putative RNA helicase and shows testis-specific expression. Multiple transcript variants encoding different isoforms have been found for this gene. [provided by RefSeq, Aug 2009]

Product images:



Circular map for RC219511



Western blot validation of overexpression lysate (Cat# [LY412833]) using anti-DDK antibody (Cat# [TA50011-100]). Left: Cell lysates from untransfected HEK293T cells; Right: Cell lysates from HEK293T cells transfected with RC219511 using transfection reagent MegaTran 2.0 (Cat# [TT210002]).