

Product datasheet for RC219500

CD1E (NM_001042585) Human Tagged ORF Clone

Product data:

Product Type:	Expression Plasmids
Product Name:	CD1E (NM_001042585) Human Tagged ORF Clone
Tag:	Myc-DDK
Symbol:	CD1E
Synonyms:	CD1A; R2
Mammalian Cell Selection:	Neomycin
Vector:	pCMV6-Entry (PS100001)
E. coli Selection:	Kanamycin (25 ug/mL)
ORF Nucleotide Sequence:	>RC219500 representing NM_001042585 Red=Cloning site Blue=ORF Green=Tags(s)

TTTTGTAATACGACTCACTATAGGGCGGCCGGAATTCGTCGACTGGATCCGGTACCGAGGAGATCTGCC
GCC**CGATCGCC**

ATGCTGCTCCTGTTCTCCTCTTCGAGGGTCTCTGCTGCTCCTGGGAAAAACAGCAGCTCCCCAGGCTC
TACAATCCTATCATCTAGCAGCAGAGGAGCAGCTGTCTTCCGCATGCTCCAACTTCTCCTTTGCCAA
CCACAGCTGGGCACACAGTGAGGGCTCAGGATGGCTGGGTGACCTGCAGACTCATGGCTGGGACTGTC
TTGGGCACCATCCGCTTCTGAAGCCCTGGTCCCATGGAACTTCAGCAAGCAGGAGCTGAAAACTTAC
AGTCACTGTTCCAGTTATACTTCCATAGTTTTATCCAGATAGTGAAGCTTCTGCTGGTCAATTTACGCT
TGAATACCCCTTCGAGATCCAGATATTAGCTGGCTGTAGAATGAATGCCCCACAAATCTTCTTAAATATG
GCATATCAAGGGTCAGATTTCTGAGTTTCCAAGGAATTTCTGGGAGCCATCTCCAGGAGCAGGGATCC
GGGCCCAAGCATCTGTAAAGTGCTCAATCGCTACCTAGATATTAAGGAAATACTGCAAAGCCTTCTTGG
TCACACCTGCCCTCGATTCTAGCGGGGCTCATGGAAGCAGGGGAGTCAGAACTGAAACGGAAAGTGAAG
CCAGAGGCCTGGCTGTCTGTGGCCCCAGTCTGGCCCTGGCCGTCTGCAGCTTGTGTGCCATGTCTCAG
GATTCTACCCAAAGCCGTGTGGGTGATGTGGATGCGGGTGGATATCCATCTTCTCATCCTGATCTG
TTTGACTGTGATAGTTACCCTGGTCATATTGGTTGTAGTTGACTCACGGTAAAAAACAGAGCCCTGTC
TTTCTCATGGGAGCCAACACTCAGGACACCAAGAATCAAGACATCAGTTCTGCTTGGCACAAGTATCGT
GGATCAAAACAGAGTATTGAAGAAGTGAAGACACGCCTAAACCAACTCTGG

ACGCGTACGCGGCCGCTCGAGCAGAACTCATCTCAGAAGAGGATCTGGCAGCAATGATATCCTGGATT
ACAAGGATGACGACGATAAGGTTTAA



[View online »](#)

Protein Sequence: >RC219500 representing NM_001042585
Red=Cloning site Green=Tags(s)

MLLLFLLFEGLCPCGENTAAPQALQSYHLAAEEQLSFRMLQTSSFANHSWAHSEGSGLGDLQTHGWDTV
 LGTIRFLKPWSHGNSKQELKNLQSLFQLYFHSFIQIVQASAGQFQLEYPFIEIQILAGCRMNAPQIFLNM
 AYQGSDFLSFQGISWEPSPGAGIRAQNIKVLNRYLDIKEILQSLGHTCPRFLAGLMEAGESELKRKVK
 PEAWLSCGPSPGRLQLVCHVSGFYPKPVWMMRGYSIFLILICTVIVTLVILVVVDSRLKKQSPV
 FLMGANTQDTKNSRHQFCLAQVSWIKNRVLKKWTRLNQLW

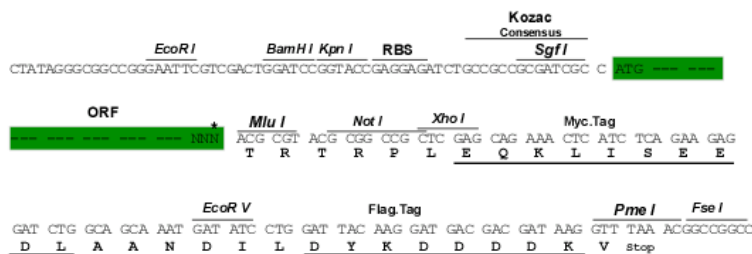
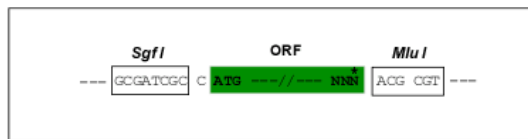
TRTRPLEQKLISEEDLAANDILDYKDDDDKV

Chromatograms: https://cdn.origene.com/chromatograms/mk8052_a12.zip

Restriction Sites: SgfI-MluI

Cloning Scheme:

Cloning sites used for ORF Shuttling:



* The last codon before the Stop codon of the ORF

ACCN: NM_001042585

ORF Size: 963 bp

OTI Disclaimer: The molecular sequence of this clone aligns with the gene accession number as a point of reference only. However, individual transcript sequences of the same gene can differ through naturally occurring variations (e.g. polymorphisms), each with its own valid existence. This clone is substantially in agreement with the reference, but a complete review of all prevailing variants is recommended prior to use. [More info](#)

OTI Annotation: This clone was engineered to express the complete ORF with an expression tag. Expression varies depending on the nature of the gene.

Components: The ORF clone is ion-exchange column purified and shipped in a 2D barcoded Matrix tube containing 10ug of transfection-ready, dried plasmid DNA (reconstitute with 100 ul of water).

Reconstitution Method:

1. Centrifuge at 5,000xg for 5min.
2. Carefully open the tube and add 100ul of sterile water to dissolve the DNA.
3. Close the tube and incubate for 10 minutes at room temperature.
4. Briefly vortex the tube and then do a quick spin (less than 5000xg) to concentrate the liquid at the bottom.
5. Store the suspended plasmid at -20°C. The DNA is stable for at least one year from date of shipping when stored at -20°C.

RefSeq: [NM_001042585.3](#)

RefSeq Size: 1862 bp

RefSeq ORF: 966 bp

Locus ID: 913

UniProt ID: [P15812](#)

Cytogenetics: 1q23.1

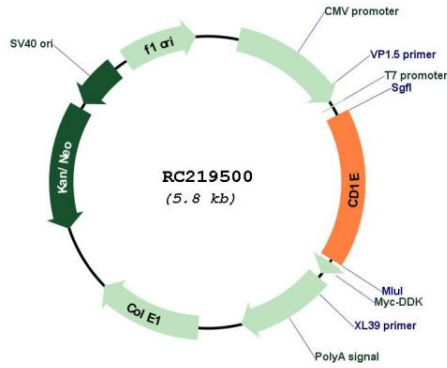
Protein Families: Druggable Genome, Transmembrane

Protein Pathways: Hematopoietic cell lineage

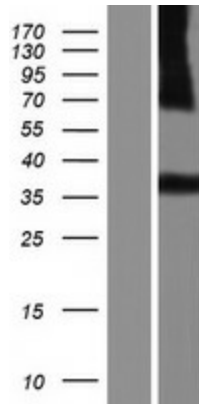
MW: 36.38 kDa

Gene Summary: This gene encodes a member of the CD1 family of transmembrane glycoproteins, which are structurally related to the major histocompatibility complex (MHC) proteins and form heterodimers with beta-2-microglobulin. The CD1 proteins mediate the presentation of primarily lipid and glycolipid antigens of self or microbial origin to T cells. The human genome contains five CD1 family genes organized in a cluster on chromosome 1. The CD1 family members are thought to differ in their cellular localization and specificity for particular lipid ligands. The protein encoded by this gene localizes within Golgi compartments, endosomes, and lysosomes, and is cleaved into a stable soluble form. The soluble form is required for the intracellular processing of some glycolipids into a form that can be presented by other CD1 family members. Many alternatively spliced transcript variants encoding different isoforms have been described. Additional transcript variants have been found; however, their biological validity has not been determined. [provided by RefSeq, Jun 2010]

Product images:



Circular map for RC219500



Western blot validation of overexpression lysate (Cat# [LY420993]) using anti-DDK antibody (Cat# [TA50011-100]). Left: Cell lysates from untransfected HEK293T cells; Right: Cell lysates from HEK293T cells transfected with RC219500 using transfection reagent MegaTran 2.0 (Cat# [TT210002]).