

## Product datasheet for **RC219499**

### TREX2 (NM\_080701) Human Tagged ORF Clone

#### Product data:

|                           |   |
|---------------------------|---|
| Product Type:             | Expression Plasmids   |
| Product Name:             | TREX2 (NM_080701) Human Tagged ORF Clone                                    |
| Tag:                      | Myc-DDK   |
| Symbol:                   | TREX2   |
| Mammalian Cell Selection: | Neomycin  |
| Vector:                   | pCMV6-Entry (PS100001)  |
| E. coli Selection:        | Kanamycin (25 ug/mL)  |
| ORF Nucleotide Sequence:  | >RC219499 representing NM_080701<br>Red=Cloning site Blue=ORF Green=Tags(s) |

TTTTGTAATACGACTCACTATAGGGCGGCCGGAATTCGTCGACTGGATCCGGTACCGAGGAGATCTGCC  
GCC**CGATCGCC**

ATGTCCGAGGCACCCCGGGCCGAGACCTTTGTCTTCCTGGACCTGGAAGCCACTGGGCTCCCCAGTGTGG  
AGCCCCGAGATTGCCGAGCTGTCCCTCTTTGCTGTCCACCGCTCCTCCCTGGAGAACCCGGAGCACGACGA  
GTCTGGTGCCTAGTATTGCCCGGGTCTGGACAAGCTCACGCTGTGCATGTGCCCGAGCGCCCTTC  
ACTGCCAAGGCCAGCGAGATCACCGCCTGAGCAGTGAGGGCTGGCGCATGCCGAAGGCTGGCTTTG  
ATGGCGCCGTGGTGGGACGCTGCAGGCCTTCTGAGCCGCCAGGCAGGGCCCATCTGCCTTGTGGCCCA  
CAATGGCTTTGATTATGATTTCCCTGCTGTGTGCCGAGCTGCGCGCCTGGGTGCCCGCTGCCCGGG  
GACACTGTCTGCCTGGACACGCTGCCGGCCTGCGGGCCTGGACCGCGCCACAGCCACGGCACCCGGG  
CCCGGGGCCGCCAGGGTTACAGCCTCGGCAGCCTCTCCACCGCTACTTCCGGGCAGAGCCAAGCGCAGC  
CCACTCAGCCGAGGGCGACGTGCACACCCTGCTCCTGATCTTCTGCACCGCGCCGAGAGCTGCTCGCC  
TGGGCCGATGAGCAGGCCGTGGGTGGGCCACATCGAGCCCATGTAATTGCCGCTGATGACCCAGCC  
TGGAGGCC

**ACGCGT**ACGCGGCCGCTCGAGCAGAACTCATCTCAGAAGAGGATCTGGCAGCAAATGATATCTGGATT  
ACAAGGATGACGACGATAAGGTTTAA



[View online »](#)

**Protein Sequence:** >RC219499 representing NM\_080701

Red=Cloning site Green=Tags(s)

MSEAPRAETFVFLDLEATGLPSVEPEIAELSLFAVHRSSLENPEHDESGALVLPVRLDKLTLCMCPERPF  
 TAKASEITGLSSEGLARCRKAGFDGAVVRTLQAFLSRQAGPICLVAHNGFDYDFPLLCAELRRLGARLPR  
 DTVCLDTLPALRGLDRAHSHGTRARGRQGYSLGSLFHRYFRAEPSAAHSAEGDVHTLLLIFLHRAELLA  
 WADEQARGWAHIEPMYLPDDPSLEA

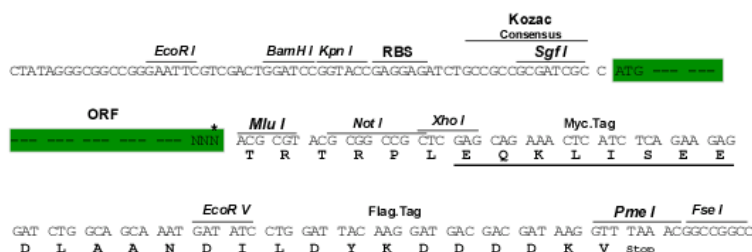
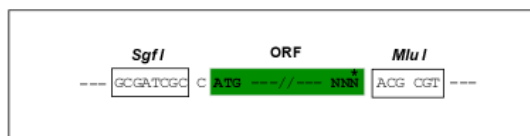
TRTRPLEOKLISEEDLAANDILDYKDDDDKV

**Chromatograms:** [https://cdn.origene.com/chromatograms/mk6488\\_h10.zip](https://cdn.origene.com/chromatograms/mk6488_h10.zip)

Restriction Sites: Sgfl-MluI

### Cloning Scheme:

Cloning sites used for ORF Shuttling:



\* The last codon before the Stop codon of the ORF

ACCN: NM 080701

ORF Size: 708 bp

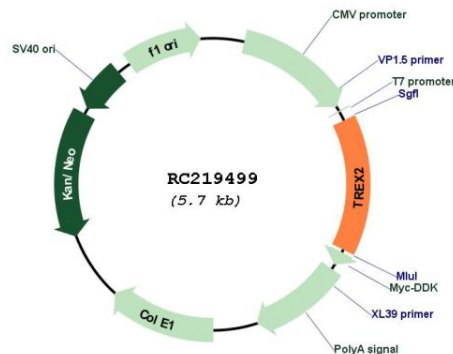
**OTI Disclaimer:** The molecular sequence of this clone aligns with the gene accession number as a point of reference only. However, individual transcript sequences of the same gene can differ through naturally occurring variations (e.g. polymorphisms), each with its own valid existence. This clone is substantially in agreement with the reference, but a complete review of all prevailing variants is recommended prior to use. [More info](#)

**OTI Annotation:** This clone was engineered to express the complete ORF with an expression tag. Expression varies depending on the nature of the gene.

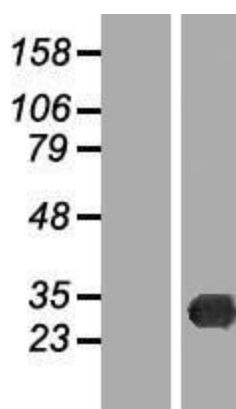
**Components:** The ORF clone is ion-exchange column purified and shipped in a 2D barcoded Matrix tube containing 10ug of transfection-ready, dried plasmid DNA (reconstitute with 100 ul of water).

|                               |  |
|-------------------------------|--|
| <b>Reconstitution Method:</b> | 1. Centrifuge at 5,000xg for 5min.   |
|                               | 2. Carefully open the tube and add 100ul of sterile water to dissolve the DNA.   |
|                               | 3. Close the tube and incubate for 10 minutes at room temperature.   |
|                               | 4. Briefly vortex the tube and then do a quick spin (less than 5000xg) to concentrate the liquid at the bottom.  |
|                               | 5. Store the suspended plasmid at -20°C. The DNA is stable for at least one year from date of shipping when stored at -20°C.   |
| <b>RefSeq Size:</b>           | 1255 bp  |
| <b>RefSeq ORF:</b>            | 711 bp   |
| <b>Locus ID:</b>              | 11219  |
| <b>UniProt ID:</b>            | <a href="#">Q9BQ50</a>   |
| <b>Cytogenetics:</b>          | Xq28   |
| <b>Protein Families:</b>      | Druggable Genome   |
| <b>MW:</b>                    | 25.9 kDa   |
| <b>Gene Summary:</b>          | This gene encodes a nuclear protein with 3' to 5' exonuclease activity. The encoded protein participates in double-stranded DNA break repair, and may interact with DNA polymerase delta. [provided by RefSeq, Nov 2012] |

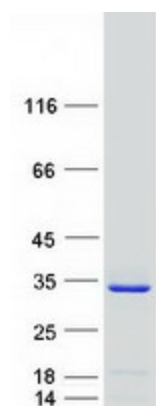
## Product images:



Circular map for RC219499



Western blot validation of overexpression lysate (Cat# [LY409112]) using anti-DDK antibody (Cat# [TA50011-100]). Left: Cell lysates from untransfected HEK293T cells; Right: Cell lysates from HEK293T cells transfected with RC219499 using transfection reagent MegaTran 2.0 (Cat# [TT210002]).



Coomassie blue staining of purified TREX2 protein (Cat# [TP319499]). The protein was produced from HEK293T cells transfected with TREX2 cDNA clone (Cat# RC219499) using MegaTran 2.0 (Cat# [TT210002]).