

## Product datasheet for RC219498

### SS18 (NM\_001007559) Human Tagged ORF Clone

#### Product data:

Product Type:	Expression Plasmids
Product Name:	SS18 (NM_001007559) Human Tagged ORF Clone
Tag:	Myc-DDK
Symbol:	SS18
Synonyms:	SSXT; SYT
Mammalian Cell Selection:	Neomycin
Vector:	pCMV6-Entry (PS100001)
E. coli Selection:	Kanamycin (25 ug/mL)
ORF Nucleotide Sequence:	>RC219498 ORF sequence Red=Cloning site Blue=ORF Green=Tags(s)

TTTTGTAATACGACTCACTATAGGGCGGCCGGGAATTCGTCGACTGGATCCGGTACCGAGGAGATCTGCC  
GCC**CGGATCGCC**

ATGTCGTGGCTTTCGCGGCCCGAGGCAGCGAGGCAAGGGGAGATCACTCCCCTGCGATTGAGAAGA  
TGTTGGATGACAATAACCATCTTATTCAGTGTATAATGGACTCTCAGAATAAAGGAAAGACCTCAGAGTG  
TTCTCAGTATCAGCAGATGTTGCACACAACTTGGTATACCTTGCTACAATAGCAGATTCTAATCAAAAT  
ATGCAGTCTCTTTACCAGCACCCATACAGAATATGCCTATGGTCTGGAGGGATGAATCAGAGCG  
GCCCTCCCCACCTCCACGCTCTACAACATGCCTTCAGATGGAATGGTAGGTGGGGTCTCCTGCACC  
GCATGCAGAACCAGATGAACGCCAGATGCCTGGGCCAACCATATGCCTATGCAGGGACCTGGACCC  
AATCAACTCAATATGACAAACAGTTCCATGAATATGCCTCAAGTAGCCATGGATCCATGGAGGTTACA  
ACCATTCTGTGCCATCATCACAGAGCATGCCAGTACAGAATCAGATGACAATGAGTCAGGGACAACCAAT  
GGGAAACTATGGTCCCAGACCAATATGAGTATGCAGCCAAACCAAGGTCCAATGATGCATCAGCAGCCT  
CCTTCTCAGCAATACAATATGCCACAGGGAGCGGACAGCATTACCAAGGACAGCAGCCACCTATGGGAA  
TGATGGTCAAGTTAACCAAGGCAATCATATGATGGTTCAGAGACAGATTCTCCCTATAGACCTCCTCA  
ACAGGGCCACCACAGCAGTACTCAGGCCAGGAAGACTATTACGGGGACCAATACAGTCAATGGTGGACAA  
GGTCCCTCAGAAGGCATGAACCAGCAATATTACCTGATGGTCAATGATTACGGTTATCAGCAACCGT  
CGTATCCTGAACAAGGCTACGATAGGCCTTATGAGGATTCTCACAACATTACTACGAAGGAGGAAATTC  
ACAGTATGGCCAACAGCAAGATGCATACCAGGGACCACCTCCACAACAGGATATCCACCCAGCAGCAG  
CAGTACCAGGGCAGCAAGGTTACCCAGGACAGCAGCAGGGCTACGGTCTTCACAGGGTGGTCCAGGTC  
CTCAGTATCCTAACTACCCACAGGGACAAGGTCAGCAGTATGGAGGATATAGACCAACACAGCCTGGACC  
ACCACAGCCACCCAGCAGAGGCCTTATGGATATGACCAGGGACAGTATGGAAATTACCAGCAG

**ACGCGT**ACGCGGCCGCTCGAGCAGAACTCATCTCAGAAGAGGATCTGGCAGCAATGATATCCTGGATT  
ACAAGGATGACGACGATAAGGTTTAA



[View online »](#)

**Protein Sequence:** >RC219498 protein sequence  
Red=Cloning site Green=Tags(s)

MSVAFAAPRQRGKEITPAAIQKMLDDNNHLIQCIMDSQNKGKTSECSQYQQLHTNLVYLATIADSNQN  
 MQSLLPAPPIQNMPMGPGGMNQSGPPPPRSHNMPSDGMVGGGPPAPHMQNQMNQMPGPNHMPMQGPGP  
 NQLNMTNSSMNMPSSSHGSMGGYNHNSVPSQSMPVQNQMTMSQGPNGYGRPNMSMQPNQGPMMHQQP  
 PSQQYNMPQGGGQHYQGQPPMGMGMQVNGNHHMMGQRQIPYRPPQGGPPQYSGQEDYYGDQYSHGGQ  
 GPPEGMNQYYPDGHNDYGYQQPSYPEQGYDRPYEDSSQHYYEGGNSQYGGQQDAYQGPPPPQGGYPPQQQ  
 QYPGQQGYPGQQGYGPSQGGPGQYPNYPQGGQGGYRPTQPGRPQPQQRPYGYDQGGYGNYYQQ

TRTRPLEQKLISEEDLAANDILDYKDDDDKV

**Chromatograms:** [https://cdn.origene.com/chromatograms/mk6451\\_a04.zip](https://cdn.origene.com/chromatograms/mk6451_a04.zip)

**Restriction Sites:** SgfI-MluI

**Cloning Scheme:**



\* The last codon before the Stop codon of the ORF

**ACCN:** NM\_001007559

**ORF Size:** 1254 bp

**OTI Disclaimer:** The molecular sequence of this clone aligns with the gene accession number as a point of reference only. However, individual transcript sequences of the same gene can differ through naturally occurring variations (e.g. polymorphisms), each with its own valid existence. This clone is substantially in agreement with the reference, but a complete review of all prevailing variants is recommended prior to use. [More info](#)

**OTI Annotation:** This clone was engineered to express the complete ORF with an expression tag. Expression varies depending on the nature of the gene.

**Components:** The ORF clone is ion-exchange column purified and shipped in a 2D barcoded Matrix tube containing 10ug of transfection-ready, dried plasmid DNA (reconstitute with 100 ul of water).

**Reconstitution Method:**

1. Centrifuge at 5,000xg for 5min.
2. Carefully open the tube and add 100ul of sterile water to dissolve the DNA.
3. Close the tube and incubate for 10 minutes at room temperature.
4. Briefly vortex the tube and then do a quick spin (less than 5000xg) to concentrate the liquid at the bottom.
5. Store the suspended plasmid at -20°C. The DNA is stable for at least one year from date of shipping when stored at -20°C.

**RefSeq:** [NM\\_001007559.3](#)

**RefSeq Size:** 3440 bp

**RefSeq ORF:** 1257 bp

**Locus ID:** 6760

**UniProt ID:** [Q15532](#)

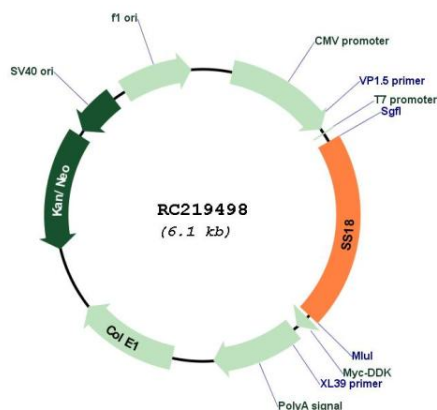
**Cytogenetics:** 18q11.2

**Protein Families:** Druggable Genome

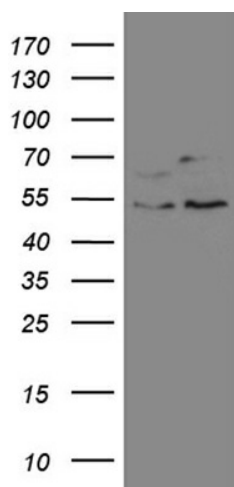
**MW:** 45.9 kDa

**Gene Summary:** Appears to function synergistically with RBM14 as a transcriptional coactivator. Isoform 1 and isoform 2 function in nuclear receptor coactivation. Isoform 1 and isoform 2 function in general transcriptional coactivation. Component of SWI/SNF chromatin remodeling subcomplex GBAF that carries out key enzymatic activities, changing chromatin structure by altering DNA-histone contacts within a nucleosome in an ATP-dependent manner (PubMed:29374058).[UniProtKB/Swiss-Prot Function]

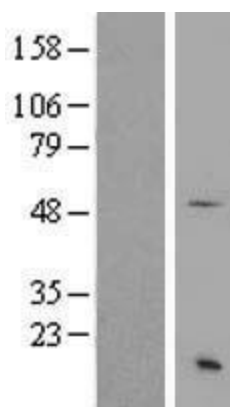
## Product images:



Circular map for RC219498



HEK293T cells were transfected with the pCMV6-ENTRY control (Cat# [PS100001], Left lane) or pCMV6-ENTRY SS18 (Cat# RC219498, Right lane) cDNA for 48 hrs and lysed. Equivalent amounts of cell lysates (5 ug per lane) were separated by SDS-PAGE and immunoblotted with anti-SS18 (Cat# [TA809897])(1:2000). Positive lysates [LY423511] (100ug) and [LC423511] (20ug) can be purchased separately from OriGene.



Western blot validation of overexpression lysate (Cat# [LY423511]) using anti-DDK antibody (Cat# [TA50011-100]). Left: Cell lysates from untransfected HEK293T cells; Right: Cell lysates from HEK293T cells transfected with RC219498 using transfection reagent MegaTran 2.0 (Cat# [TT210002]).