

Product datasheet for **RC219495**

TSGA10 (NM_182911) Human Tagged ORF Clone

Product data:

Product Type:	Expression Plasmids
Product Name:	TSGA10 (NM_182911) Human Tagged ORF Clone
Tag:	Myc-DDK
Symbol:	TSGA10
Synonyms:	CEP4L; CT79; SPGF26
Mammalian Cell Selection:	Neomycin
Vector:	pCMV6-Entry (PS100001)
E. coli Selection:	Kanamycin (25 ug/mL)



[View online »](#)

**ORF Nucleotide
Sequence:**

>RC219495 ORF sequence
 Red=Cloning site Blue=ORF Green=Tags(s)

TTTTGTAATACGACTCACTATAGGGCGGCCGGAATTCGTGCGACTGGATCCGGTACCGAGGAGATCTGCC
 GCC**CGCATCGCC**

ATGATCGGAAGTAGGTCTAAAAGTCCAAGACGCCCATCACCAACTGCCCGGGTGCAAACGTGTGATGTAG
 AACTTTTGAAGACAACAACAAGAGATCGTGAAGAACTTAAATGCATGCTGGAAAAATATGAGCGCCATTT
 GGCAGAAATTCAGGGTAATGTCAAGTTCTTAAATCTGAGAGAGACAAGATCTTCTCTTTATGAACAG
 GCACAGGAAGAAATTACCCGACTTCGACGAGAAATGATGAAAAGCTGTAAGAGTCTAAATCAACAACGG
 CACATGCTATTCTCCGGCGAGTGGAGACTGAAAGAGATGTAGCCTTTACTGATTTACGAAGAATGACCAC
 AGAACGAGATAGTCTAAGGGAGAGGCTAAAGATTGCTCAAGAGACAGCATTTAATGAGAAGGCTCACCTG
 GAACAAAGGATAGAGGAGCTGGAGTGTACAGTTCATAATCTTGATGATGAACGTATGGAGCAAATGTCAA
 ATATGACTTTGATGAAGGAAACCATAAGCACTGTGAAAAAGAAATGAAATCACTAGCAAGAAAGGCAAT
 GGATACCGAAAGTGAAC TTGGCAGACAAAAAGCAGAGAATAATTCTTTGAGACTTTTGTATGAAAACACA
 GAAAAAGATCTTTCTGATCTCAGCGACACCTTGCTAAGAAAAATATGAGCTACAGTTACTCAGGAGA
 AATTATGTGCTTGATGAAAAATTGATAACTTTACAAGGCAAAATATTGCACAGCGAGAAGAAATCAG
 CATTCTTGGTGGAAACCCTCAATGATCTGGCTAAAGAAAAGGAATGCATGCAAGCATGTTTGGATAAAAA
 TCTGAGAATATTGCATCCCTTGGAGAGAGTTTGGCAATGAAAGAAAAGACCATTTTCAGGCATGAAGAATA
 TCATTGCTGAGATGGAACAGGCATCAAGACAGTGTACTGAGGCCCTAATTGTGTGTGAACAAGACGTTTC
 CAGAAATGCGTCCGCAATTGGATGAGACAAATGATGAGCTGGCCAGATCGCCAGGGAAAGAGATATCTTG
 GCTCATGACAATGACAATCTCCAGGAACAGTTTGTCTAAAGCTAAACAAGAAAACCAGGCACTGTCCAAAA
 AATTGAATGACACTCATAATGAAC TTAATGACATAAAAACAGAAGTTCAAGATACTAATTTGGAGTTAA
 CAAGCTGAAGAATATATTAAGTCTGAAGAATCTGAGAACC GGCAATGATGGAACAACCTCGAAAAGCC
 AATGAAGATGCTGAAAAC TGGGAAAATAAAGCCCGTCAATCAGAGGCAGATAACAATACCCTCAAAC TGG
 AACTTATCACTGCTGAGGCAGAGGGTAACAGATTTAAAAGAAAAGTAGATTCCCTCAACAGAGAGGTTGA
 GCAACACTTAAATGCAGAAAGGCTTACAAGTCCAGATTTCTACCTTACATAAATCTGTTGTA AAAATG
 GAAGAGGAGCTTCAGAAGGTT CAGTTTAAAAAGTGTCCGCTCTTGCAGATTTGTCTTACTAGGGAAC
 TCTGTATTAAC TTAGCTCAAGCAAAGA ACTTCTTAATCGACAGCTGGTTGCTAAAGATCAAGAAATAGA
 AATGAGGGAGAATGAGTTAGATTCTGCTCATTCTGAAATTGAACTCCTGAGGAGTCAGATGGCAAATGAG
 AGAATCTCCATGCAGAATCTAGAAGCTTTGCTGGTGGCCAATCGAGACAAAGAATATCAGTCTCAGATAG
 CACTTCAAGAAAAGAATCTGAAATTCAGCTTCTTAAAGAACACCTTTGTTTGGCAGAAAATAAAATGGC
 CATCCAGAGTAGAGATGTGGCCAGTTCAGAAATGTTGTACACAATTGGAAGCTGATTTAGACATTACC
 AAAAGACAAC TAGGAACAGAGCGCTTTGAAAGGGAGAGGGCCGTACAAGA ACTTCGCCGCCAAAAT TATT
 CAAGTAATGCTTATCATATGAGTTCTACAATGAAGCCAAATACAAAATGTCAATCACCAGAACGTGCTCA
 CCATCGATCTCTGACCGAGGCCTAGATCGATCATTAGAAGAGAATCTTTGCTACAGAGATTTTC

ACGCGTACGCGGCCGCTCGAGCAGAAACTCATCTCAGAAGAGGATCTGGCAGCAAATGATATCCTGGATT
 ACAAGGATGACGACGATAAGGTTTAA

Protein Sequence: >RC219495 protein sequence
 Red=Cloning site Green=Tags(s)

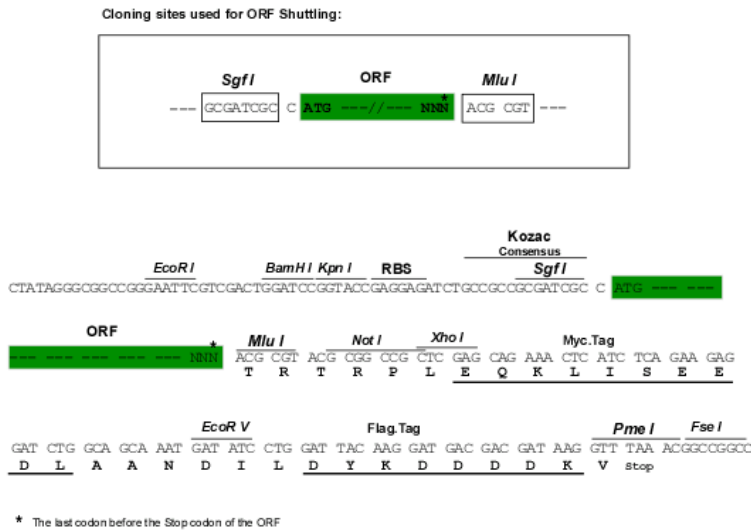
```
MMRSRSKSPRRPSPTARGANCDVELLKTTRDREELKCMLEKYERHLAEIQGNVKVLKSERDKIFLLYEQ
AQEEITRLRREMMKSKSPKSTTAHAILRRVETERDVAFTDLRRMTTERDSLRELRKIAQETAFAFNEKAHL
EQRIEELECTVHNLDDEMEQMSNMTLMKETISTVEKEMKSLARKAMDTSELGRQKAENNSLRLLYENT
EKDLSDTQRHLAKKKYELQLTQEKIMCLDEKIDNFRQNIQAQREEISILGGTLNDLAKEKECMQACLDKK
SENIASLGEGLAMKEKTIKSGMKNIIAEMEQAQRQCTEALIVCEQDVSRMRRLQDETNDELAQIARERDIL
AHDNDNLQEQFAKAKQENQALSKKLNDRHNEIKQKVDNLEVNKLNILKSESENRQMMQELRKA
NEDAENWENKARQSEADNNTLKLLEITAEAEGRNLKEKVDNREVEQHLNAERSYKSQISTLHKSVMKM
EELQKQVFEKVSALADLSTRELKIKLDSSKELLNRQLVAKDQEIEMRENELDSAHEIELLSQMANE
RISMQNLKALLVANRDKEYQSQIALQEKESIQLLKHEHLCLAEKMAIQSRDVAQFRNVVTQLEADLDIT
KRQLGTERFERERAVQELRRQNYSSNAYHMSSTMKPNTKCHSPERAHHRSPDRGLDRSLEENLCYRDF
```

TRTRPLEQKLISEEDLAANDILDYKDDDDKV

Chromatograms: https://cdn.origene.com/chromatograms/mk6695_d01.zip

Restriction Sites: SgfI-MluI

Cloning Scheme:



* The last codon before the Stop codon of the ORF

ACCN: NM_182911

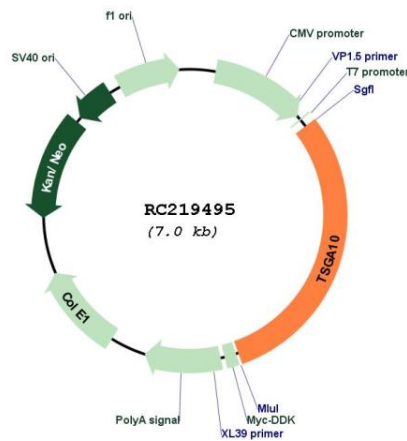
ORF Size: 2094 bp

OTI Disclaimer: The molecular sequence of this clone aligns with the gene accession number as a point of reference only. However, individual transcript sequences of the same gene can differ through naturally occurring variations (e.g. polymorphisms), each with its own valid existence. This clone is substantially in agreement with the reference, but a complete review of all prevailing variants is recommended prior to use. [More info](#)

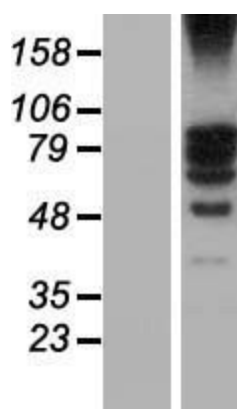
OTI Annotation: This clone was engineered to express the complete ORF with an expression tag. Expression varies depending on the nature of the gene.

Components:	The ORF clone is ion-exchange column purified and shipped in a 2D barcoded Matrix tube containing 10ug of transfection-ready, dried plasmid DNA (reconstitute with 100 ul of water).
Reconstitution Method:	<ol style="list-style-type: none"> 1. Centrifuge at 5,000xg for 5min. 2. Carefully open the tube and add 100ul of sterile water to dissolve the DNA. 3. Close the tube and incubate for 10 minutes at room temperature. 4. Briefly vortex the tube and then do a quick spin (less than 5000xg) to concentrate the liquid at the bottom. 5. Store the suspended plasmid at -20°C. The DNA is stable for at least one year from date of shipping when stored at -20°C.
RefSeq:	<u>NM_182911.2</u>
RefSeq Size:	3664 bp
RefSeq ORF:	2097 bp
Locus ID:	80705
UniProt ID:	<u>Q9BZW7</u>
Cytogenetics:	2q11.2
MW:	81.4 kDa
Gene Summary:	Plays a role in spermatogenesis (PubMed:28905369). When overexpressed, prevents nuclear localization of HIF1A (By similarity).[UniProtKB/Swiss-Prot Function]

Product images:



Circular map for RC219495



Western blot validation of overexpression lysate (Cat# [LY405325]) using anti-DDK antibody (Cat# [TA50011-100]). Left: Cell lysates from untransfected HEK293T cells; Right: Cell lysates from HEK293T cells transfected with RC219495 using transfection reagent MegaTran 2.0 (Cat# [TT210002]).