

Product datasheet for **RC219486**

PLA1A (NM_015900) Human Tagged ORF Clone

Product data:

Product Type:	Expression Plasmids
Product Name:	PLA1A (NM_015900) Human Tagged ORF Clone
Tag:	Myc-DDK
Symbol:	PLA1A
Synonyms:	PS-PLA1; PSPLA1
Mammalian Cell Selection:	Neomycin
Vector:	pCMV6-Entry (PS100001)
E. coli Selection:	Kanamycin (25 ug/mL)



[View online »](#)

ORF Nucleotide Sequence:

>RC219486 representing NM_015900
 Red=Cloning site Blue=ORF Green=Tags(s)

TTTTGTAATACGACTCACTATAGGGCGGCCGGAATTCGTCGACTGGATCCGGTACCGAGGAGATCTGCC
 GCCCGCATCGCC

ATGCCCCAGGTCCTGGGAGAGCTGCTTCTGGGTGGGGGCCTCATTTTGTGGCTCAGCGTTGGAAGTT
 CAGGGGATGCACCTCCTACCCCACAGCCAAAGTGCCTGACTTCCAGAGCGCCAACCTTTTTGAAGGCAC
 CGATCTCAAAGTCCAGTTTCTCCTCTTTGTCCCTTCAATCCTAGCTGTGGGAGCTAGTAGAAGGAAGC
 AGTGACCTCCAAAACCTCTGGGTTCAATGCCACTCTGGGAACAACTAATTATCCATGGATTGAGGTTT
 TAGGAACAAAGCCTTCTGGATTGACACATTTATTAGAACCCTTCTGCGTGAACGAATGCTAATGTGAT
 TGCCGTGGACTGGATTTATGGGTCTACAGGAGTCTACTTCTCAGCTGTGAAAAATGTGATTAAGTTGAGC
 CTCGAGATCTCCCTTTTCTCAATAAACTCCTGGTCTGGGTGTGTCGGAATCCTCAATCCACATCATTG
 GTGTTAGCTGGGGCCACGTTGGGGCATGGTGGGACAGCTCTTCGGAGGCCAGCTGGGACAGATCAC
 AGGCCTGGACCCGCTGGACCTGAGTACACCAGGGCCAGTGTGGAAGAGCGCTTGGATGCTGGAGATGCC
 CTCTTCGTGGAAGCCATCCACACAGACACCGACAATTTGGGTATTCGGATTCCCGTTGGACATGTGGACT
 ACTTCGCAACGAGGCCAAGACCAACCTGGCTGCCCCACCTTCTTTTACGCAGGTTATAGTTATCTGAT
 CTGTGATCACATGAGGGCTGTGCACCTCTACATCAGCGCCCTGGAGAATTCCTGTCCACTGATGGCCTTT
 CCCTGTGCCAGCTACAAGGCCTTCTTGTGGACGCTGTCTGGATTGCTTTAACCTTTTCTGCTTTCCT
 GCCAAGGATAGGACTGGTGAACAAGTGGTGTCAAGATAGAGCCGCTCCCAAGGAAGTGAAGTCTA
 CCTCTGACTACTTCCAGTGCTCCGTACTGCATGCATCACAGCCTCGTGGAGTTTCACTGAAGGAACTG
 AGAAACAAGGACCAACATCGAGGTTACCTTCTTAGCAGTAACATCACCTCTTCACTAAGATCACCA
 TACCTAAGCAGCAACGCTATGGGAAAGGAATCATAGCCCATGCCACCCACAATGCCAGATAAACCAAGT
 GAAATTCAGTTTCAGTCTTCCAACCGAGTTTGGAAAAAGACCGGACTACCATTATTGGGAAGTTCTGC
 ACTGCCCTTTTGCCTGTCAATGACAGAGAAAAGATGGTCTGCTTACCTGAACCAGTGAACCTACAAGCAA
 GTGTGACTGTTTCTGTGACCTGAAGATAGCCTGTGTG

ACGCGTACGCGGCCGCTCGAGCAGAACTCATCTCAGAAGAGGATCTGGCAGCAAATGATATCCTGGATT
 ACAAGGATGACGACGATAAGGTTTAA

Protein Sequence:

>RC219486 representing NM_015900
 Red=Cloning site Green=Tags(s)

MPPGPWESCFWVGGLILWLSVGSSGDAPPTPQPKCADFQSANLFEGTDLKVQFLLFVPSNPSCGQLVEGS
 SDLQNSGFNATLGTKLIHGFVRLGKPSWIDTFIRTLRATNANVIAVDWIYGSTGVYFSAVKNVIKLS
 LEISLFLNKLVLGVSESSIHIIGVSLGAHVGGMVGQLFGGQLGQITGLDPAGPEYTRASVEERLDAGDA
 LFVEAIHTDNDLIRIPVGHVDYFVNGGQDQPGCPTFFYAGYSYLICDHMRVHLYISALENSCLMAF
 PCASYKAFLAGRCLDCFNPFLSCPRIGLVEQGGVKIEPLPKEVKVYLLTSSAPYCMHSLVEFHLKEL
 RNKDTNIEVTFLSSNITSSSKITIPKQRYGKGIHAHATPQCQINQVKFKFQSSNRVWKKDRTTIIGKFC
 TALLPVNDREKMVCLPEPVNLQASVTVSCLKIACV

TRTRPLEQKLISEEDLAANDILDYKDDDDKV

Chromatograms:

https://cdn.origene.com/chromatograms/ja1128_e09.zip

Restriction Sites:

Sgfl-Mlul

Cloning Scheme:


ACCN: NM_015900

ORF Size: 1368 bp

OTI Disclaimer: Due to the inherent nature of this plasmid, standard methods to replicate additional amounts of DNA in E. coli are highly likely to result in mutations and/or rearrangements. Therefore, OriGene does not guarantee the capability to replicate this plasmid DNA. Additional amounts of DNA can be purchased from OriGene with batch-specific, full-sequence verification at a reduced cost. Please contact our customer care team at custsupport@origene.com or by calling 301.340.3188 option 3 for pricing and delivery.

The molecular sequence of this clone aligns with the gene accession number as a point of reference only. However, individual transcript sequences of the same gene can differ through naturally occurring variations (e.g. polymorphisms), each with its own valid existence. This clone is substantially in agreement with the reference, but a complete review of all prevailing variants is recommended prior to use. [More info](#)

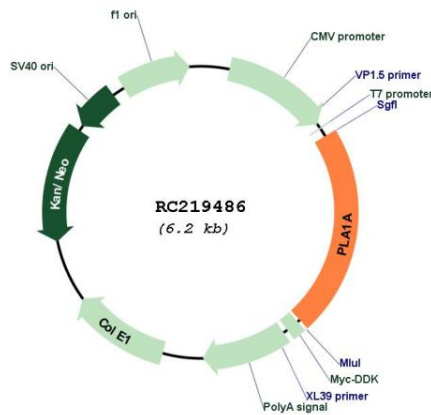
OTI Annotation: This clone was engineered to express the complete ORF with an expression tag. Expression varies depending on the nature of the gene.

Components: The ORF clone is ion-exchange column purified and shipped in a 2D barcoded Matrix tube containing 10ug of transfection-ready, dried plasmid DNA (reconstitute with 100 ul of water).

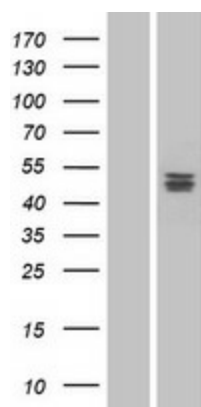
- Reconstitution Method:**
1. Centrifuge at 5,000xg for 5min.
 2. Carefully open the tube and add 100ul of sterile water to dissolve the DNA.
 3. Close the tube and incubate for 10 minutes at room temperature.
 4. Briefly vortex the tube and then do a quick spin (less than 5000xg) to concentrate the liquid at the bottom.
 5. Store the suspended plasmid at -20°C. The DNA is stable for at least one year from date of shipping when stored at -20°C.

RefSeq:	<u>NM_015900.4</u>
RefSeq Size:	1758 bp
RefSeq ORF:	1371 bp
Locus ID:	51365
UniProt ID:	<u>Q53H76</u>
Cytogenetics:	3q13.33
Domains:	lipase
Protein Families:	Druggable Genome, Secreted Protein
MW:	49.5 kDa
Gene Summary:	The protein encoded by this gene is a phospholipase that hydrolyzes fatty acids at the sn-1 position of phosphatidylserine and 1-acyl-2-lysophosphatidylserine. This secreted protein hydrolyzes phosphatidylserine in liposomes. Three transcript variants encoding different isoforms have been found for this gene.[provided by RefSeq, May 2011]

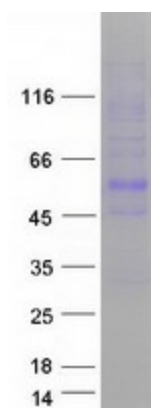
Product images:



Circular map for RC219486



Western blot validation of overexpression lysate (Cat# [LY414332]) using anti-DDK antibody (Cat# [TA50011-100]). Left: Cell lysates from untransfected HEK293T cells; Right: Cell lysates from HEK293T cells transfected with RC219486 using transfection reagent MegaTran 2.0 (Cat# [TT210002]).



Coomassie blue staining of purified PLA1A protein (Cat# [TP319486]). The protein was produced from HEK293T cells transfected with PLA1A cDNA clone (Cat# RC219486) using MegaTran 2.0 (Cat# [TT210002]).