

Product datasheet for RC219476

TREML1 (NM_178174) Human Tagged ORF Clone

Product data:

Product Type:	Expression Plasmids
Product Name:	TREML1 (NM_178174) Human Tagged ORF Clone
Tag:	Myc-DDK
Symbol:	TREML1
Synonyms:	dj238O23.3; GLTL1825; PRO3438; TLT-1; TLT1
Mammalian Cell Selection:	Neomycin
Vector:	pCMV6-Entry (PS100001)
E. coli Selection:	Kanamycin (25 ug/mL)
ORF Nucleotide Sequence:	>RC219476 representing NM_178174 Red=Cloning site Blue=ORF Green=Tags(s)

TTTTGTAATACGACTCACTATAGGGCGGCCGGAATTCGTCGACTGGATCCGGTACCGAGGAGATCTGCC
GCC**CGGATCGCC**

ATGGGCCTCACCTGCTCTTGCTGCTGCTCCTGGGACTAGAAGGTCAGGGCATAGTTGGCAGCCTCCCTG
AGGTGCTGCAGGCACCCGTGGGAAGCTCCATTCTGGTGCAGTGCCACTACAGGCTCCAGGATGTCAAAGC
TCAGAAGGTGTGGTGCCGGTTCTTGCCGGAGGGGTGCCAGCCCTGGTGTCTCAGCTGTGGATCGCAGA
GCTCCAGCGGGCAGGCGTACGTTTCTCACAGACCTGGGTGGGGCCTGCTGCAGGTGAAATGGTTACCC
TGCAGGAAGAGGATGCTGGCGAGTATGGCTGCATGGTGGATGGGGCCAGGGGGCCCGAGATTTTGCACAG
AGTCTCTCTGAACATACTGCCCCAGAGGAAGAAGAAGAGACCCATAAGATTGGCAGTCTGGCTGAGAAC
GCATTCTCAGACCCTGCAGGCAGTGCCAACCCCTTGAACCCAGCCAGGATGAGAAGAGCATCCCCTTGA
TCTGGGGTGTGTCTCCTGGTAGGTCTGCTGGTGGCAGCGGTGGTGTGTTGCTGTGATGGCCAAAGAG
GAAACAAGGGAACAGGCTTGGTGTCTGTGGCCGATTCTGAGCAGCAGAGTTTCAGGCATGAATCCCTCC
TCAGTGGTCCACCACGTCACTGACTCTGGACCGGCTGCTGAATTGCCTTTGGATGTACCACACATTAGGC
TTGACTCACACCTTCATTTGACAATACCACCTACACCAGCCTACCTCTTGATTCCCCATCAGGAAAACC
TCACTCCCAGCTCCATCCTCATTGCCCCCTCTACCTCCTAAGGTCTGGTCTGCTCCAAGCCTGTGACA
TATGCCACAGTAATCTTCCCGGGAGGGAACAAGGTGGAGGGACCTCGTGTGGCCAGCCCAAGATCCAC
CTAACAATCAGACTCCATCCAGC

ACGCGTACGCGGCCGCTCGAGCAGAAACTCATCTCAGAAGAGGATCTGGCAGCAAATGATATCCTGGATT
ACAAGGATGACGACGATAAGGTTTAA



[View online »](#)

Protein Sequence: >RC219476 representing NM_178174
Red=Cloning site Green=Tags(s)

MGLTLLLLLLGLLEGQGI VGS LPEVLQAPV GSSILVQCHYRLQDVKAQKVWCRFLPEGCQPLVSSAVDRR
 APAGRRFTL DLGGLLQVEMVTLQEEDAGEYGC MVDGARGPQILHRVSLNLPPEEEEE THKIGSLAEN
 AFSDPAGSANPLEPSQDEKSIPLIWGAVLLVGLLVAAVL FAVMAKRKQGNRLGVCGRFLSSRVSGMNPS
 SVVHHVSDSGPAAELPLDVPHIRLDSPPSFDNTTYTSLPLDSPSGKPSLPAPSSLPPLPPKVLVCSKPVT
 YATVIFPGNKGGTSCGPAQNPPNNQTPSS

TRTRPLEQKLISEEDLAANDILDYKDDDDKV

Chromatograms: https://cdn.origene.com/chromatograms/mg2798_c01.zip

Restriction Sites: SgfI-MluI

Cloning Scheme:

Cloning sites used for ORF Shuttling:



* The last codon before the Stop codon of the ORF

ACCN: NM_178174

ORF Size: 933 bp

OTI Disclaimer: The molecular sequence of this clone aligns with the gene accession number as a point of reference only. However, individual transcript sequences of the same gene can differ through naturally occurring variations (e.g. polymorphisms), each with its own valid existence. This clone is substantially in agreement with the reference, but a complete review of all prevailing variants is recommended prior to use. [More info](#)

OTI Annotation: This clone was engineered to express the complete ORF with an expression tag. Expression varies depending on the nature of the gene.

Components: The ORF clone is ion-exchange column purified and shipped in a 2D barcoded Matrix tube containing 10ug of transfection-ready, dried plasmid DNA (reconstitute with 100 ul of water).

Reconstitution Method:

1. Centrifuge at 5,000xg for 5min.
2. Carefully open the tube and add 100ul of sterile water to dissolve the DNA.
3. Close the tube and incubate for 10 minutes at room temperature.
4. Briefly vortex the tube and then do a quick spin (less than 5000xg) to concentrate the liquid at the bottom.
5. Store the suspended plasmid at -20°C. The DNA is stable for at least one year from date of shipping when stored at -20°C.

Note: Plasmids are not sterile. For experiments where strict sterility is required, filtration with 0.22um filter is required.

RefSeq: [NM_178174.3](#), [NP_835468.1](#)

RefSeq Size: 980 bp

RefSeq ORF: 936 bp

Locus ID: 340205

UniProt ID: [Q86YW5](#)

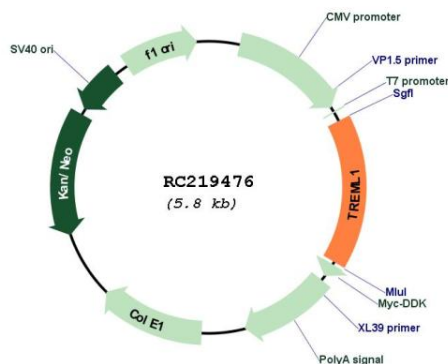
Cytogenetics: 6p21.1

Protein Families: Druggable Genome, Transmembrane

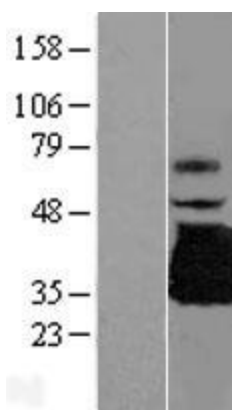
MW: 32.5 kDa

Gene Summary: This gene encodes a member of the triggering receptor expressed on myeloid cells-like (TREM) family. The encoded protein is a type 1 single Ig domain orphan receptor localized to the alpha-granule membranes of platelets. The encoded protein is involved in platelet aggregation, inflammation, and cellular activation and has been linked to Gray platelet syndrome. Alternative splicing results in multiple transcript variants [provided by RefSeq, Nov 2012]

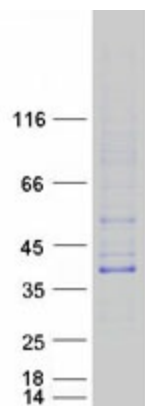
Product images:



Circular map for RC219476



Western blot validation of overexpression lysate (Cat# [LY406014]) using anti-DDK antibody (Cat# [TA50011-100]). Left: Cell lysates from untransfected HEK293T cells; Right: Cell lysates from HEK293T cells transfected with RC219476 using transfection reagent MegaTran 2.0 (Cat# [TT210002]).



Coomassie blue staining of purified TREML1 protein (Cat# [TP319476]). The protein was produced from HEK293T cells transfected with TREML1 cDNA clone (Cat# RC219476) using MegaTran 2.0 (Cat# [TT210002]).