

Product datasheet for RC219474

HCP5 (NM_006674) Human Tagged ORF Clone

Product data:

Product Type: Expression Plasmids
Product Name: HCP5 (NM_006674) Human Tagged ORF Clone
Tag: Myc-DDK
Symbol: HCP5
Synonyms: 6S2650E; D6S2650E; P5-1
Mammalian Cell Selection: Neomycin
Vector: pCMV6-Entry (PS100001)
E. coli Selection: Kanamycin (25 ug/mL)
ORF Nucleotide Sequence: >RC219474 representing NM_006674
 Red=Cloning site Blue=ORF Green=Tags(s)

TTTTGTAATACGACTCACTATAGGGCGGCCGGAATTCGTCGACTGGATCCGGTACCGAGGAGATCTGCC
 GCC**CGATCGCC**

ATGCTGCTGAGGATGTCAGAGCACAGGAACGAGGCCTTGGGAAATTACCTGGAAATGCGACTGAAATCTT
 CCTTCTGAGGGGTCTGGGCTCTTGGAAATCAAACCTCTCAGGTTGGGTGGCTGGACGATTCTCCTCAC
 ACTTACAATGGGACAAGGGGAACAGGAGGCCCAAGGGGATCCCTGGGTTCCACACGAACTCCTCCTA
 CCCTCATTGTGTGACAGCAGCCATGCCTCCTCTGGGGATCAGGATCTATTACCTGTGCCTGGAGAGGAG
 GGGACTCCTTCTCACCCGCTGGTCTCTGGACACATACTGTCCAATCCCTGTGGCAGCTGTAATGTG
 TAGTTCAATGGGACTCATTGTCCCCTTTAAGGGTACCCTCCTT

ACGCGTACGCGGCCGCTCGAGCAGAACTCATCTCAGAAGAGGATCTGGCAGCAAATGATATCCTGGATT
 ACAAGGATGACGACGATAAGGTTTAA

Protein Sequence: >RC219474 representing NM_006674
 Red=Cloning site Green=Tags(s)

MLLRMSEHRNEALGNYLEMRLKSSFLRGLGSWKSINPLRLGGWTILLTLTMGQGEPPGQPQDPWVPHSELL
 PSLCDSSHASSWGSISITCAWRGGDSSSHPLVSGHILSNPVAAMCSSMGTHLSPFKGTL

TRTRPLEQKLISEEDLAANDILDYKDDDDKV

Chromatograms: https://cdn.origene.com/chromatograms/mk6043_h03.zip

Restriction Sites: SgfI-MluI



[View online »](#)

Cloning Scheme:


ACCN: NM_006674

ORF Size: 396 bp

OTI Disclaimer: The molecular sequence of this clone aligns with the gene accession number as a point of reference only. However, individual transcript sequences of the same gene can differ through naturally occurring variations (e.g. polymorphisms), each with its own valid existence. This clone is substantially in agreement with the reference, but a complete review of all prevailing variants is recommended prior to use. [More info](#)

OTI Annotation: This clone was engineered to express the complete ORF with an expression tag. Expression varies depending on the nature of the gene.

Components: The ORF clone is ion-exchange column purified and shipped in a 2D barcoded Matrix tube containing 10ug of transfection-ready, dried plasmid DNA (reconstitute with 100 ul of water).

- Reconstitution Method:**
1. Centrifuge at 5,000xg for 5min.
 2. Carefully open the tube and add 100ul of sterile water to dissolve the DNA.
 3. Close the tube and incubate for 10 minutes at room temperature.
 4. Briefly vortex the tube and then do a quick spin (less than 5000xg) to concentrate the liquid at the bottom.
 5. Store the suspended plasmid at -20°C. The DNA is stable for at least one year from date of shipping when stored at -20°C.

RefSeq: [NM_006674.2](#), [NP_006665.2](#)

RefSeq Size: 2451 bp

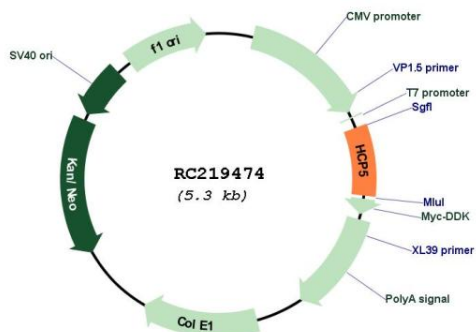
RefSeq ORF: 128 bp

Locus ID: 10866

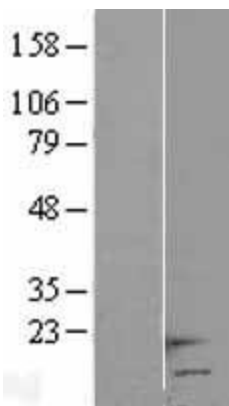
Cytogenetics: 6p21.33

MW: 14.1 kDa

Product images:



Circular map for RC219474



Western blot validation of overexpression lysate (Cat# [LY401998]) using anti-DDK antibody (Cat# [TA50011-100]). Left: Cell lysates from untransfected HEK293T cells; Right: Cell lysates from HEK293T cells transfected with RC219474 using transfection reagent MegaTran 2.0 (Cat# [TT210002]).