

Product datasheet for **RC219473**

NRG1 (NM_013964) Human Tagged ORF Clone

Product data:

Product Type:	Expression Plasmids
Product Name:	NRG1 (NM_013964) Human Tagged ORF Clone
Tag:	Myc-DDK
Symbol:	NRG1
Synonyms:	ARIA; GGF; GGF2; HGL; HRG; HRG1; HRGA; MST131; MSTP131; NDF; NRG1-IT2; SMDF
Mammalian Cell Selection:	Neomycin
Vector:	pCMV6-Entry (PS100001)
E. coli Selection:	Kanamycin (25 ug/mL)



[View online »](#)

**ORF Nucleotide
Sequence:**

>RC219473 representing NM_013964
 Red=Cloning site Blue=ORF Green=Tags(s)

TTTTGTAATACGACTCACTATAGGGCGGCCGGGAATTCGTCGACTGGATCCGGTACCGAGGAGATCTGCC
 GCC**CGGATCGCC**

ATGTCGAGCGCAAAGAAGGCAGAGGCAAAAGGGAAGGCAAGAAGAAGGAGCGAGGCTCCGCAAGAAGC
 CGGAGTCCGCGCGGGCAGCCAGAGCCAGCCTTGCCCTCCCAATTGAAAGAGATGAAAAGCCAGGAATC
 GGCTGCAGGTTCCAACTAGTCCTTCGGTGTGAAACCAGTTCTGAATACTCCTCTCAGATTCAAGTGG
 TTCAAGAATGGGAATGAATTGAATCGAAAAACAAACCACAAAATATCAAGATACAAAAAGCCAGGGA
 AGTCAGAACTTCGCATTAACAAAGCATCACTGGCTGATTCTGGAGAGTATATGTGCAAAGTGATCAGCAA
 ATTAGGAAATGACAGTGCCTCTGCCAATATCACCATCGTGAATCAAACGAGATCATCACTGGTATGCCA
 GCCTCACTGAAGGAGCATATGTGTCTCAGAGTCTCCATTAGAATATCAGTATCCACAGAAGGAGCAA
 ATACTTCTCATCTACATCTACATCCACCCTGGGACAAGCCATCTTGTAAAATGTGCGGAGAAGGAGAA
 AACTTTCTGTGTGAATGGAGGGGAGTGTTCATGGTGAAGACCTTTCAAACCCCTCGAGATACTTGTGC
 AAGTGCCAACCTGGATCACTGGAGCAAGATGTACTGAGAATGTGCCCATGAAAAGTCCAAAACCAAGAAA
 AGGCGGAGGAGCTGTACCAGAAGAGAGTGTGACCATAACCGGCATCTGCATCGCCCTCCTTGTGGTCCG
 CATCATGTGTGGTGGCCTACTGCAAAACCAAGAAACAGCGGAAAAAGCTGCATGACCGTCTTCGGCAG
 AGCCTTCGGTCTGAACGAAACAATATGATGAACATTGCCAATGGGCCCTCACCATCCTAACCCACCCCGG
 AGAATGTCAGCTGGTGAATCAATACGTATCTAAAAACGTATCTCCAGTGAGCATATTGTTGAGAGAGA
 AGCAGAGACATCCTTTCCACCAGTCACTATACTTCCACAGCCCATCACTCCACTACTGTACCCAGACT
 CCTAGCCACAGCTGGAGCAACGGACACACTGAAAGCATCCTTTCCGAAAGCCACTCTGTAATTGTGATGT
 CATCCGTAGAAAACAGTAGGCACAGCAGCCCAACTGGGGGCCAAGAGGACGTCTTAATGGCACAGGAGG
 CCCTCGTGAATGTAACAGCTTCCAGGCATGCCAGAGAAACCCCTGATTCCTACCGAGACTCTCCTCAT
 AGTGAAAGGTATGTGTCAGCCATGACCACCCCGGCTCGTATGTCACCTGTAGATTTCCACACGCCAAGCT
 CCCCCAAATCGCCCCCTTCGAAATGTCTCCACCCGTGTCCAGCATGACGGTGTCCATGCCTTCCATGGC
 GGTGAGCCCTTCATGGAAGAAGAGAGACCTCTACTTCTCGTGACACCACCAAGGCTGCGGGAGAAGAAG
 TTTGACCATCACCTCAGCAGTTCAGCTCCTTCCACCACAACCCCGCATGACAGTAACAGCCTCCCTG
 CTAGCCCTTGAGGATAGTGGAGGATGAGGAGTATGAAACGACCCAAGAGTACGAGCCAGCCCAAGAGCC
 TGTTAAGAAACTCGCAATAGCCGGCGGGCCAAAAGAACCAAGCCCAATGGCCACATTGCTAACAGATTG
 GAAGTGGACAGCAACACAAGCTCCAGAGCAGTAACTCAGAGAGTGAACAGAAGATGAAAGAGTAGGTG
 AAGATACGCTTTCTGGGCATACAGAACCCCTGGCAGCCAGTCTTGGGCAACACCTGCCTTCCGCT
 GGCTGACAGCAGGACTAACCCAGCAGGCCGCTTCTCGACACAGGAAGAAATCCAGGCCAGGCTGTCTAGT
 GTAATTGCTAACCAAGACCCATTGCTGTA

ACGCGTACGCGGCCGCTCGAGCAGAAACTCATCTCAGAAGAGGATCTGGCAGCAAATGATATCCTGGATT
 ACAAGGATGACGACGATAAGGTTTAA

Protein Sequence: >RC219473 representing NM_013964
 Red=Cloning site Green=Tags(s)

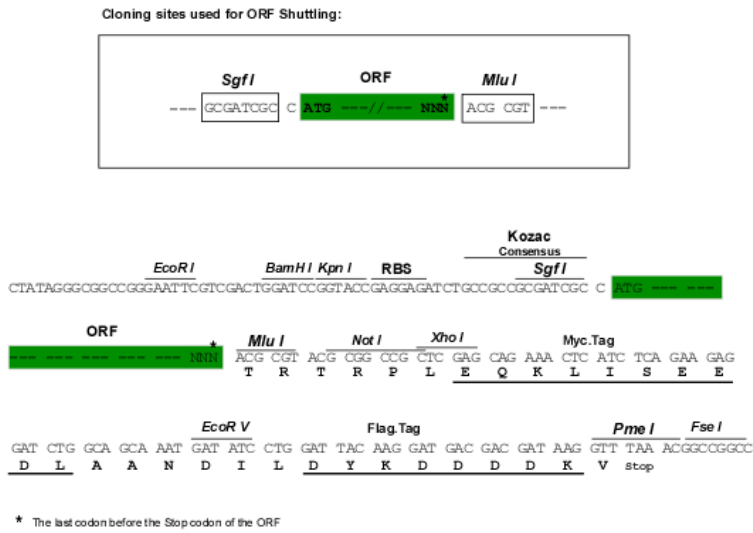
```
MSERKEGRGKGGKGGKKKERGSGKKPESAAGSQSPALPPQLKEMKSQESAAGSKLVLCETSSEYSSLRFKW
FKNGNELNRKKNPQNIKIQQKPGKSELINKASLADSGEYMCKVISKLGNDASANITIVESNEIITGMP
ASTEGAYVSSSEPIRISVSTEGANTSSSTSTSTGTSHLVKCAEKEKTFVNGGECFMVKDLSNPSRYLC
KCQPFGTARGCTENVPMKVQNQEAEELYQKRVLTITGICIALLVGIMCVVAYCKTKKQRKKLHDLRQ
SLRSERNMMNIANGPHHPNPPENVQLVNQYVSKNVISSEHIVEREAETSFSTSHYTSTAHHSTTVTQT
PSHSWSNGHTESILSESHSVIVMSSVENSRRHSSPTGGPRGRLNGTGGPRECNSFLRHARETPDSYRDSPH
SERVVSAMTTPARMSPVDFHTPSSPKSPPSEMSPVSSMTVSMPSMAVSPFMEEERPLLLVTPPRLREKK
FDHHPQQFSSFHHPAHDNSLSPASPLRIVEDEEYETTQEYEPAQEPVKKLANSRRAKRTKPNGHIANRL
EVDSENTSSQSSNSESETERVGEDTPFLGIQNPLAASLEATPAFRLADSRNPAGRFSTQEIIQARLSS
VIANQDPIAV
```

TRTRPLEQKLISEEDLAANDILDYKDDDDKV

Chromatograms: https://cdn.origene.com/chromatograms/mk6812_d04.zip

Restriction Sites: SgfI-MluI

Cloning Scheme:



ACCN: NM_013964

ORF Size: 1920 bp

OTI Disclaimer: Due to the inherent nature of this plasmid, standard methods to replicate additional amounts of DNA in E. coli are highly likely to result in mutations and/or rearrangements. Therefore, OriGene does not guarantee the capability to replicate this plasmid DNA. Additional amounts of DNA can be purchased from OriGene with batch-specific, full-sequence verification at a reduced cost. Please contact our customer care team at custsupport@origene.com or by calling 301.340.3188 option 3 for pricing and delivery.

The molecular sequence of this clone aligns with the gene accession number as a point of reference only. However, individual transcript sequences of the same gene can differ through naturally occurring variations (e.g. polymorphisms), each with its own valid existence. This clone is substantially in agreement with the reference, but a complete review of all prevailing variants is recommended prior to use. [More info](#)

OTI Annotation: This clone was engineered to express the complete ORF with an expression tag. Expression varies depending on the nature of the gene.

Components: The ORF clone is ion-exchange column purified and shipped in a 2D barcoded Matrix tube containing 10ug of transfection-ready, dried plasmid DNA (reconstitute with 100 ul of water).

Reconstitution Method:

1. Centrifuge at 5,000xg for 5min.
2. Carefully open the tube and add 100ul of sterile water to dissolve the DNA.
3. Close the tube and incubate for 10 minutes at room temperature.
4. Briefly vortex the tube and then do a quick spin (less than 5000xg) to concentrate the liquid at the bottom.
5. Store the suspended plasmid at -20°C. The DNA is stable for at least one year from date of shipping when stored at -20°C.

RefSeq: [NM_013964.5](#)

RefSeq Size: 2224 bp

RefSeq ORF: 1923 bp

Locus ID: 3084

UniProt ID: [Q02297](#)

Cytogenetics: 8p12

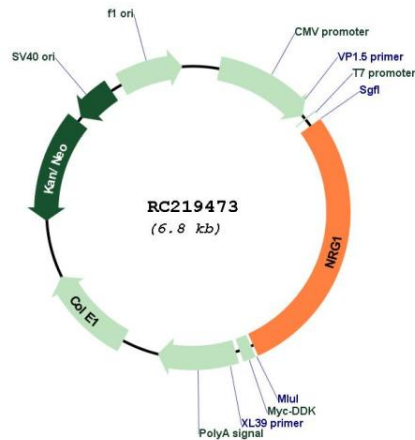
Protein Families: Druggable Genome, Secreted Protein, Transcription Factors, Transmembrane

Protein Pathways: ErbB signaling pathway

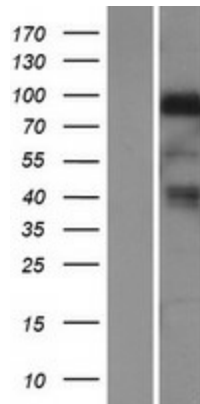
MW: 70.2 kDa

Gene Summary: The protein encoded by this gene is a membrane glycoprotein that mediates cell-cell signaling and plays a critical role in the growth and development of multiple organ systems. An extraordinary variety of different isoforms are produced from this gene through alternative promoter usage and splicing. These isoforms are expressed in a tissue-specific manner and differ significantly in their structure, and are classified as types I, II, III, IV, V and VI. Dysregulation of this gene has been linked to diseases such as cancer, schizophrenia, and bipolar disorder (BPD). [provided by RefSeq, Apr 2016]

Product images:



Circular map for RC219473



Western blot validation of overexpression lysate (Cat# [LY415560]) using anti-DDK antibody (Cat# [TA50011-100]). Left: Cell lysates from untransfected HEK293T cells; Right: Cell lysates from HEK293T cells transfected with RC219473 using transfection reagent MegaTran 2.0 (Cat# [TT210002]).