

Product datasheet for RC219467

OR2J2 (NM_030905) Human Tagged ORF Clone

Product data:

Product Type:	Expression Plasmids
Product Name:	OR2J2 (NM_030905) Human Tagged ORF Clone
Tag:	Myc-DDK
Symbol:	OR2J2
Synonyms:	dj80119.4; hs6M1-6; OR6-8; OR6-19; OR6.3.8; ORL684
Mammalian Cell Selection:	Neomycin
Vector:	pCMV6-Entry (PS100001)
E. coli Selection:	Kanamycin (25 ug/mL)
ORF Nucleotide Sequence:	>RC219467 representing NM_030905 Red=Cloning site Blue=ORF Green=Tags(s)

TTTTGTAATACGACTCACTATAGGGCGGCCGGAATTCGTCGACTGGATCCGGTACCGAGGAGATCTGCC
GCC**CGATCGCC**

ATGATGATTAATAAAAAATGCAAGTTCGGAAGACTTCTTTATTCTACTTGGATTTTCTAATTGGCCTCAGC
TGGAAAGTAGTTCTCTTTGTGGTTATCTTGATCTTCTACCTGATGACACTGACAGGAAACCTGTTCATCAT
CATCCTGTCATACGTGGACTCCCATCTCCACACACCAATGTAATCTTCTTTCAAACCTCTCATTCTG
GATCTCTGCTACACCACCAGCTCTATCCCTCAGTTGCTGGTGAATCTCCGGGGCCCGAAAAGACCATCT
CGTATGCTGGTTGCATGGTTCACTTTACTTTGTTCTTGCACTGGGAATCACAGAGTGTGCCTACTGGT
GGTATGTCATATGATCGTTATGTAGCTGTGTGTAGACCTTTGCATTACACTGTCCTCATGCACCCTCGT
TTCTGCCACTTGTGGTTGCGGCTTCTTGGGTAATTGGTTTTACTATCTCAGCACTTCATTCCCTCTTTA
CTTTCTGGGTACCCCTTTGTGGACATCGCTAGTGGATCACTTCTTCTGTGAAGTTCCAGCACTTCTGCG
TTTATCATGTGTTGACACCCATGCAAAATGAGCTGACCCTCATGGTCATGAGCTCCATTTTGTCTCATA
CCTCTCATTCTCATTCTCACTACCTATGGTGCCATTGCCCGGGCTGTACTGAGCATGCAATCAACCACTG
GGCTTCAGAAAGTGTAGGACATGTGGAGCCCATCTTATGGTTGTATCTCTCTTTTTCATTCCAGTCAT
GTGCATGTATCTCCAGCCACCATCAGAAAATTCTCCTGATCAGGGCAAGTTCATTGCCCTCTTTTATACT
GTTGTACACCCGAGTCTTAATCCTCTAATCTACACTCTCAGAAACAAGCATGTAAAAGGGGCAGCGAAGA
GACTATTGGGGTGGGAGTGGGGGAAG

ACGCGTACGCGGCCGCTCGAGCAGAAACTCATCTCAGAAGAGGATCTGGCAGCAAATGATATCCTGGATT
ACAAGGATGACGACGATAAGGTTTAA



[View online »](#)

Protein Sequence: >RC219467 representing NM_030905
Red=Cloning site Green=Tags(s)

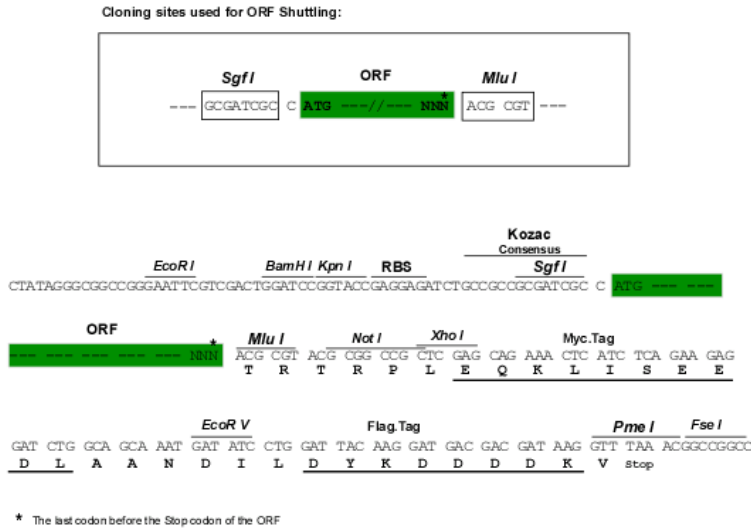
MMIKKNASSEDFFILLGFSNWPQLEVLFVVILIFYLMTLTGNLFIIILSYVDSLHTPMYFFLSNLSFL
 DLCYTTSSIPQLLVNLRGPEKTI SYAGCMVQLYFVLALGITECVLLVMSYDRYVAVCRPLHYTVLMHPR
 FCHLLVAASWVIGFTISALHSSFTFWVPLCGHRLVDHFFCEVPALLRLSCVDTHANELTLMVMSSIFVLI
 PLILILTTYGA IARAVLSMQSTTGLQKVFRTCGAHLMVVSLFFIPVMCMYLQPPSENSPDQGKFIALFYT
 VVTPSLNPLIYTLRNKHVKGA AKRLLGW EWGK

TRTRPLEQKLISEEDLAANDILDYKDDDDKV

Chromatograms: https://cdn.origene.com/chromatograms/mk8011_b07.zip

Restriction Sites: SgfI-MluI

Cloning Scheme:



ACCN: NM_030905

ORF Size: 936 bp

OTI Disclaimer: The molecular sequence of this clone aligns with the gene accession number as a point of reference only. However, individual transcript sequences of the same gene can differ through naturally occurring variations (e.g. polymorphisms), each with its own valid existence. This clone is substantially in agreement with the reference, but a complete review of all prevailing variants is recommended prior to use. [More info](#)

OTI Annotation: This clone was engineered to express the complete ORF with an expression tag. Expression varies depending on the nature of the gene.

Components: The ORF clone is ion-exchange column purified and shipped in a 2D barcoded Matrix tube containing 10ug of transfection-ready, dried plasmid DNA (reconstitute with 100 ul of water).

Reconstitution Method:

1. Centrifuge at 5,000xg for 5min.
2. Carefully open the tube and add 100ul of sterile water to dissolve the DNA.
3. Close the tube and incubate for 10 minutes at room temperature.
4. Briefly vortex the tube and then do a quick spin (less than 5000xg) to concentrate the liquid at the bottom.
5. Store the suspended plasmid at -20°C. The DNA is stable for at least one year from date of shipping when stored at -20°C.

RefSeq: [NM_030905.2](#), [NP_112167.2](#)

RefSeq Size: 939 bp

RefSeq ORF: 939 bp

Locus ID: 26707

UniProt ID: [O76002](#)

Cytogenetics: 6p22.1

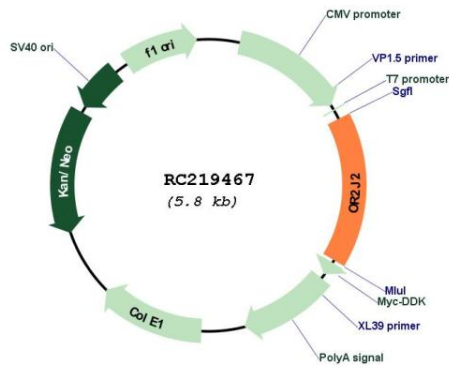
Protein Families: Druggable Genome, Transmembrane

Protein Pathways: Olfactory transduction

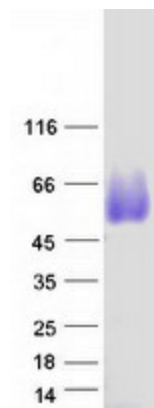
MW: 35.1 kDa

Gene Summary: Olfactory receptors interact with odorant molecules in the nose, to initiate a neuronal response that triggers the perception of a smell. The olfactory receptor proteins are members of a large family of G-protein-coupled receptors (GPCR) arising from single coding-exon genes. Olfactory receptors share a 7-transmembrane domain structure with many neurotransmitter and hormone receptors and are responsible for the recognition and G protein-mediated transduction of odorant signals. The olfactory receptor gene family is the largest in the genome. The nomenclature assigned to the olfactory receptor genes and proteins for this organism is independent of other organisms. [provided by RefSeq, Jul 2008]

Product images:



Circular map for RC219467



Coomassie blue staining of purified OR2J2 protein (Cat# [TP319467]). The protein was produced from HEK293T cells transfected with OR2J2 cDNA clone (Cat# RC219467) using MegaTran 2.0 (Cat# [TT210002]).