

Product datasheet for **RC219464**

CD147 (BSG) (NM_001728) Human Tagged ORF Clone

Product data:

Product Type:	Expression Plasmids
Tag:	Myc-DDK
Symbol:	CD147
Synonyms:	5F7; CD147; EMMPRIN; EMPRIN; HAb18G; OK; TCSF
Mammalian Cell Selection:	Neomycin
Vector:	pCMV6-Entry (PS100001)
E. coli Selection:	Kanamycin (25 ug/mL)
ORF Nucleotide Sequence:	>RC219464 representing NM_001728 Red=Cloning site Blue=ORF Green=Tags(s)

TTTTGTAATACGACTCACTATAGGGCGGCCGGAATTCGTCGACTGGATCCGGTACCGAGGAGATCTGCC
GCC**CGATCGCC**

ATGGCGGCTGCGCTGTTCTGCTGCTGGGATTCGCGCTGCTGGGCACCCACGGAGCCTCCGGGGCTGCCG
GCTTCGTCCAGGCGCGCTGTCCAGCAGAGGTGGGTGGGGGCGAGTGTGGAGCTGCACTGCGAGGCCGT
GGGCAGCCCGGTGCCGAGATCCAGTGGTGGTTGAAGGGCAGGGTCCCAACGACACCTGCTCCAGCTC
TGGGACGGCGCCCGGCTGGACCGGTCCACATCCACGCCACCTACCACGACGACGGCCAGCACCATCT
CCATCGACACGCTCGTGGAGGAGGACACGGGCACTTACGAGTGCCGGGCCAGCAACGACCCGGATCGCAA
CCACCTGACCCGGGCGCCAGGGTCAAGTGGGTCCGCGCCAGGCAGTCTGTGCTAGTCTGGAACCCGGC
ACAGTCTTCACTACCGTAGAAGACCTTGCTCCAAGATACTCCTCACCTGCTCCTGAATGACAGCGCCA
CAGAGGTACAGGGCACCGCTGGCTGAAGGGGGCGTGGTGTGAAGGAGGACGCGCTGCCGGCCAGAA
AACGGAGTTCAAGGTGGACTCCGACGACAGTGGGAGAGTACTCCTGCGTCTTCTCCCGAGCCCATG
GGCACGGCCAACATCCAGCTCCACGGGCTCCAGAGTGAAGGCTGTGAAGTCGTCAGAACATCAACG
AGGGGAGACGGCCATGCTGGTCTGCAAGTCAGAGTCCGTGCCACCTGTCACTGACTGGGCTGGTACAA
GATCACTGACTCTGAGGACAAGGCCCTCATGAACGGCTCCGAGAGCAGGTTCTTCGTGAGTTCCTCGCAG
GGCCGGTCAGAGTACACATTGAGAACCTGAACATGGAGGCCGACCCCGCCAGTACCGGTGCAACGGCA
CCAGCTCCAAGGGCTCCGACGAGCCATCATCAGCTCCGCTGCGCAGCCACCTGGCCGCCCTCTGGCC
CTTCTGGGCATCGTGGCTGAGGTGCTGGTGTGGTCAACATCATCTTCTACGAGAAGCGCCGGAAG
CCCGAGGACGTCTGGATGATGACGACGCGGCTCTGCACCCCTGAAGAGCAGCGGGCAGCACCAGAATG
ACAAAGGCAAGAAGTCCGCCAGAGGAAGTCTTCC

ACGCGTACGCGGCGGCTCGAGCAGAACTCATCTCAGAAGAGGATCTGGCAGCAAATGATATCCTGGATT
ACAAGGATGACGACGATAAGGTTTAA



[View online »](#)

Protein Sequence: >RC219464 representing NM_001728
 Red=Cloning site Green=Tags(s)

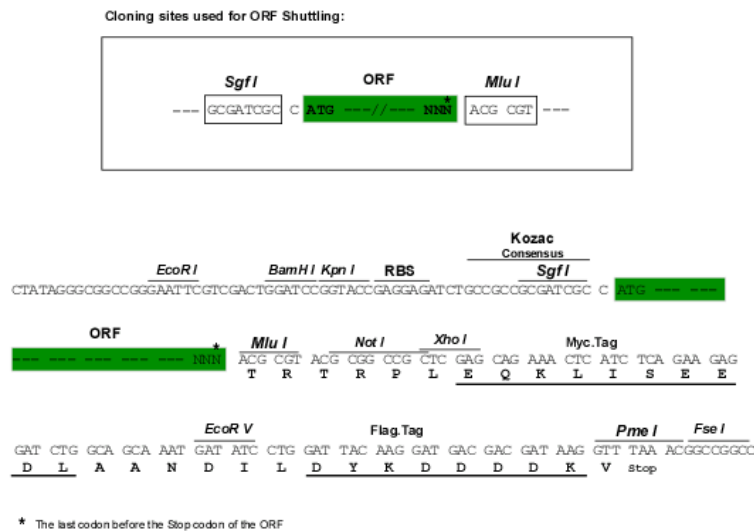
MAAALFVLLGFALLGTHGASGAAGFVQAPLSQQRWVGGSVELHCEAVGSPVPEIQWWFEGQGPNDTCSQL
 WDGARLDRVHIHATYHQHAASTISIDTLVEEDTGTIECRASNDPDRNHLTRAPRVKWWRAQAVVLVLEPG
 TVFTTTVEDLGSKILLTCSLNDSETEVTGHRWLKGGVVLKEDALPGQKTEFKVSDSQWGEYSCVFLPEPM
 GTANIQLHGPPRVKAVKSSEHINEGETAMLVCKSESVPVTDWAWYKITDSEDKALMNGSESRRFFVSSSQ
 GRSELHIENLNMEADPGQYRCNGTSSKGSQDAIITLRVRSHLAALWPFLGIVAELVLVTIIFIYEKRRK
 PEDVLDDDDAGSAPLKSSGQHQNKGKKNVRQRNSS

TRTRPLEQKLISEEDLAANDILDYKDDDDKV

Chromatograms: https://cdn.origene.com/chromatograms/mg2730_f01.zip

Restriction Sites: SgfI-MluI

Cloning Scheme:



ACCN: NM_001728

ORF Size: 1155 bp

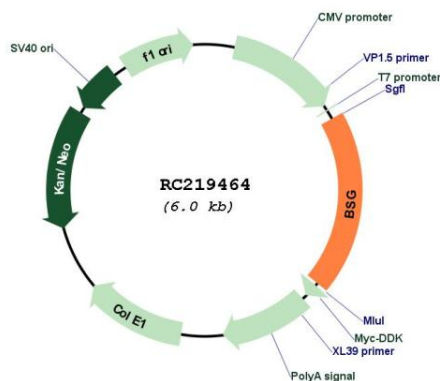
OTI Disclaimer: The molecular sequence of this clone aligns with the gene accession number as a point of reference only. However, individual transcript sequences of the same gene can differ through naturally occurring variations (e.g. polymorphisms), each with its own valid existence. This clone is substantially in agreement with the reference, but a complete review of all prevailing variants is recommended prior to use. [More info](#)

OTI Annotation: This clone was engineered to express the complete ORF with an expression tag. Expression varies depending on the nature of the gene.

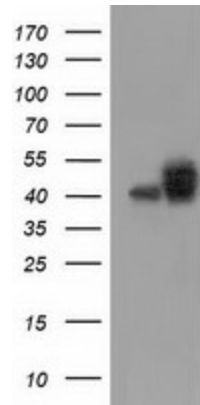
Components: The ORF clone is ion-exchange column purified and shipped in a 2D barcoded Matrix tube containing 10ug of transfection-ready, dried plasmid DNA (reconstitute with 100 ul of water).

Reconstitution Method:	<ol style="list-style-type: none"> 1. Centrifuge at 5,000xg for 5min. 2. Carefully open the tube and add 100ul of sterile water to dissolve the DNA. 3. Close the tube and incubate for 10 minutes at room temperature. 4. Briefly vortex the tube and then do a quick spin (less than 5000xg) to concentrate the liquid at the bottom. 5. Store the suspended plasmid at -20°C. The DNA is stable for at least one year from date of shipping when stored at -20°C.
Note:	Plasmids are not sterile. For experiments where strict sterility is required, filtration with 0.22um filter is required.
RefSeq:	<u>NM_001728.4</u>
RefSeq Size:	2024 bp
RefSeq ORF:	1158 bp
Locus ID:	682
UniProt ID:	<u>P35613</u>
Cytogenetics:	19p13.3
Domains:	ig, IG
Protein Families:	Druggable Genome, ES Cell Differentiation/IPS, Transmembrane
MW:	42.2 kDa
Gene Summary:	<p>The protein encoded by this gene, basigin, is a plasma membrane protein that is important in spermatogenesis, embryo implantation, neural network formation, and tumor progression. Basigin is also a member of the immunoglobulin superfamily, ubiquitously expressed in various tissues. Multiple transcript variants encoding different isoforms have been found for this gene. [provided by RefSeq, May 2020]</p>

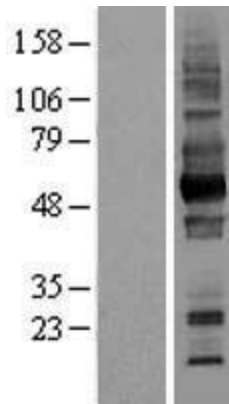
Product images:



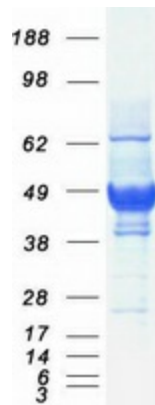
Circular map for RC219464



HEK293T cells were transfected with the pCMV6-ENTRY control (Cat# [PS100001], Left lane) or pCMV6-ENTRY BSG (Cat# RC219464, Right lane) cDNA for 48 hrs and lysed. Equivalent amounts of cell lysates (5 ug per lane) were separated by SDS-PAGE and immunoblotted with anti-BSG (Cat# [TA501189]). Positive lysates [LY419777] (100ug) and [LC419777] (20ug) can be purchased separately from OriGene.



Western blot validation of overexpression lysate (Cat# [LY419777]) using anti-DDK antibody (Cat# [TA50011-100]). Left: Cell lysates from untransfected HEK293T cells; Right: Cell lysates from HEK293T cells transfected with RC219464 using transfection reagent MegaTran 2.0 (Cat# [TT210002]).



Coomassie blue staining of purified BSG protein (Cat# [TP319464]). The protein was produced from HEK293T cells transfected with BSG cDNA clone (Cat# RC219464) using MegaTran 2.0 (Cat# [TT210002]).