

## Product datasheet for RC219461

### KDM6B (NM\_001080424) Human Tagged ORF Clone

#### Product data:

Product Type:	Expression Plasmids
Product Name:	KDM6B (NM_001080424) Human Tagged ORF Clone
Tag:	Myc-DDK
Symbol:	KDM6B
Synonyms:	JMJD3; NEDCFSA
Mammalian Cell Selection:	Neomycin
Vector:	pCMV6-Entry (PS100001)
E. coli Selection:	Kanamycin (25 ug/mL)
ORF Nucleotide Sequence:	>RC219461 representing NM_001080424 Red=Cloning site Blue=ORF Green=Tags(s)

TTTTGTAATACGACTCACTATAGGGCGCCGGGAATTCGTCGACTGGATCCGGTACCGAGGAGATCTGCC  
GCC**CGATCGCC**

ATGCATCGGGCAGTGGACCCTCCAGGGGCCGCGCTGCACGGGAAGCCTTTGCCCTTGGGGCCTGAGCT  
GTGCTGGGGCCTGGAGCTCCTGCCCGCCTCATCCCCCTCCTCGTAGCGCATGGCTGCCTGGAGGCAGATG  
CTCAGCCAGCATTGGGCAGCCCCGCTTCTGCTCCCCTACCCCTTTCACATGGCAGTAGTTCTGGGCAC  
CCCAGCAAACCATATTATGCTCCAGGGGCGCCACTCCAAGACCCTCCATGGGAAGCTGGAATCCCTGC  
ATGGCTGTGTGCAGGCATTGCTCCGGGAGCCAGCCAGGGCTTTGGGAACAGCTTGGCAACTGTA  
CGAGTCAGAGCACGATAGTGAGGAGGCCACACGCTGCTACCACAGCGCCCTTCGATACGGAGGAAGCTTC  
GCTGAGCTGGGGCCCCGATTGGCCGACTGCAGCAGGCCAGCTCTGGAACCTTTCATACTGGCTCCTGCC  
AGCACCGAGCCAAGGTCCTGCCCCACTGGAGCAAGTGTGGAACCTTGTACACCTTGAGCACAAACGGAA  
CTATGGAGCCAAGCGGGAGGTCCCCGGTGAAGCGAGCTGTGAACCCCAAGTGGTGCAGCCTGTGCCT  
CCTGCAGCACTCTCAGGCCCTCAGGGGAGGAGGGCTCAGCCCTGGAGGCAAGCGAAGGAGAGGGTGA  
ACTCTGAACAGACTGGCCTTCCCCAGGGCTGCCACTGCCTCCACCACCATACCACCACCACCACCACC  
ACCACCACCACCACCACCACCCTGCCTGGCCTGGCTACCAGCCCCCATTTTCAGCTAACCAAGCCAGGG  
CTGTGGAGTACCCTGCATGGAGATGCCTGGGGCCAGAGCGCAAGGGTTCAGCACCCCCAGAGCGCCAGG  
AGCAGCGCACTCGCTGCCTCACCCATATCCATACCCAGCTCCAGCGTACACCGCGCACCCCTGGCCA  
CCGGCTGGTCCCGCTGCTCCCCAGGCCAGGCCCCCGCCCCAGGAGCAGAGAGCCATGGCTGCCTG  
CCTGCCACCCGTCGCCCGGAAGTGACCTTAGAGAGAGCAGAGTTTCAGAGGTCGCGGATGGACTCCAGCG  
TTTCACCAGCAGCAACCACCGCTGCGTGCCTTACGCCCTTCCCGGCCCTGGCCTCCCCGGCACCCAC  
CACCAGCAGCAGTAGCAGCAGCAGCAACACTGGTCTCCGGGGCGTGGAGCCGAACCCAGGCATTCCC  
GGCGCTGACCATTACAAACTCCCGCGCTGGAGGTCTCTACCATGGCCGCTGGGGCCCTCGGCACACA  
GCAGTCGGAACCGTTCTTGGGGCTCCCGCTGCCACTCCCACCTATCCCTGCCACCTGGACCTTCCCT  
ACCCCTCCACCCCTGTCCCCGCTTACGCCCCACCACCCCTGCTGGTTGAAGGTCGGCC



[View online >](#)

TGCCGGGAGCCCGAGAGGATGGAGAGATCTTAGAAGAGCTTCTTTGGGACTGAGGGACCCCCCGCC  
 CTGCCCCACCACCCTCCCCATCGCGAGGGCTTCTTGGGGCTCCGGCCTCCCGCTTTTCTGTGGGCAC  
 TCAGGATTCTCACACCCCTCCACTCCCCAACCCCAACCACCAGCAGTAGCAACAGCAACAGTGGCAGC  
 CACAGCAGCAGCCCTGCTGGGCTGTGTCTTTCCCCACCACCTATCTGGCCAGAAGTATAGACCCCC  
 TTCCCCGGCCTCCAGCCAGCACAGAACCCCAAGGACCCACCTTGTACCCCTGACTCTTGCCCTGCC  
 TCCAGCCCTCCTTCTCCTGCCACAAAATACCTCAGGAAGCTTCAGGGCCCGGAGGCCCCCCGGCC  
 AGGGTCTCCTTCCAAAGACCCCGAGGTGGGGCCGGGCCACCCCAAGGCCCTGAGTAAAGCCCCC  
 AGCCTGTGCCCGGGGTTGGGAGCTGCCTGCCGAGGCCCTCGACTCTTTGATTTTCCCCACTCC  
 GCTGGAGGACCAGTTTGGAGGACGACCCGAATTCAAGATCCTACCTGATGGGCTGGCCAACATCATGAAG  
 ATGCTGGACGAATCCATTGCAAGGAAGAGGAACAGCAACAACAGCAAGCAGGCGTGGCCCCAACCCC  
 CGCTGAAGGAGCCCTTTCATCTCTGCAGTCTCCTTTCCACCACGACACAGCCCCACCCTACTGCTCC  
 TGCTGTGCGCGTACCACCACCACCACCACCACCACCACCACCACCACCACCACCACCAGGAAGAGGAGAAGA  
 CCACCACCAGCCCTACCACCACCACCACCACCACCACCACCACCACCACCACCACCACCACCACCACC  
 CACCCCCACCCCGAGCCGGCCAGCCTGCTCAAATCCTTGGCCTCCGTGCTGGAGGGACAAAAGTACTG  
 TTATCGGGGACTGGAGCAGCTGTTCCACCCGGCCTGGGCCCTTGCCACCACCTCAGTATCCCTGGC  
 CCCCCATCAGGTGCTACCGCCCTGCCGCCACCTCAGCGGCCCTAGCGCCAGGGCTCCCCACAGCCCT  
 CTGCTTCTCGTCATCTCAGTTCTACCTCAGCGGGCCCTGGGCCCGGAGCGCAGGGCGGGCGAAGA  
 GCCAGTCCCGGGCCCATGACCCCCACCAACCGCCCCACCCCTATCTGCCCCCTGCTCGCTGAG  
 TCTGAGGTGCTAGAAGAGATCAGCCGGGCTTGCAGACCCCTGTGGAGCGGGTGGCCGGAGTGCCACTG  
 ACCCAGCCGACCCAGTGGACACAGCAGAGCCAGCGGACAGTGGGACTGAGCGACTGCTGCCCCCGCACA  
 GGCAAGGAGGAGGCTGGCGGGTGGCGGACGTGTAGGCAGCTGTAAGCGGGCAGAGAAGGAGCATCAG  
 AAGGAGCATCGGCGGCACAGCGGGCCTGTAAGGACAGTGTGGTCTCGGCCCGTGGGGCAGGGCAA  
 AGGCCAAGGCCAAGTCCCAAAAGAAAAGAGCCCGGGTGTGGGAACCTGGACCTCAGAGCGAGGA  
 GATCCAGGGTCTGAGAAGTCCCGCCGATCTTGGCGGGCCTCCAAGGCCAAGCCACCCACAGCTCCA  
 GCCCTCCATCAGCTCCTGCACCTTCTGCCAGCCACACCCCGTCAGCCTCTGCTCCGAAAGAAGG  
 CTCGGGAGGAAGCCCGGGCCACCGGGTGTAGCCGGCCGACATGCTGAAGTGCCTCACTTAGTGA  
 GGGGCCCCCAAGGAGCTGAAGTCCGGCTCATCAAGGTAGAGAGTGGTGAAGGAGACCTTTATCGCC  
 TCTGAGGTGGAAGAGCGGGCTGCGCATGGCAGACCTCACCATCAGCCACTGTGCTGCTGACGTCGTGC  
 GCGCCAGCAGGAATGCCAAGGTGAAAGGAAAGTTTCGAGAGTCTACCTTTCCCTGCCAGTCTGTGAA  
 ACCGAAGATCAACACTGAGGAGAAGCTGCCCGGGAATACTCAACCCCTACACCAGCATCTATCTG  
 GAGAGCAACGGGATGCCTTCTACCTGTCTGCTGCAGTCTGTACAGACCTCGAAATCCCATCACAG  
 TGATCCGGGGCCTGGCGGGCTCCCTGCGGCTCACTTGGGCCCTTCTCCACCAAGACCCTGGTGAAGC  
 GAGTGGCGAACACACCGTGAAGTTCGACCCAGGTGCAGCAGCCCTCAGATGAGAACTGGGATCTGACA  
 GGCACTCGGCAGATCTGGCCTTGTGAGAGCTCCCGTTCACACCACCATTGCAAGTACGCACAGTACC  
 AGGCCTCATCCTTCCAGGAGTCTCTGCAGGAGGAGAAGGAGAGTGAAGTGAAGGAGTGAAGGAGCCAGA  
 CAGCACCCTGGAACCCCTCCTAGCAGCGCACCAGACCCGAAGAACCATCACATCATCAAGTTTGGCACC  
 AACATCGACTTGTCTGATGCTAAGCGGTGGAAGCCCGAGTGCAGGAGTGTGAAGTGCCTCCCTTCA  
 TGCGGGTAACATCCACGGGCAACATGCTGAGCCACGTGGGCCACACCATCTGGGCATGAACACGGTGCA  
 GCTGTACATGAAGGTGCCCGGCAGCCGAACGCCAGGCCACCAGGAGAATAACAACCTTCTGCTCCGTCAAC  
 ATCAACATTGGCCAGGGGACTGCGAGTGGTTCGCGGTGCACGACACTACTGGGAGACCATCAGCGCTT  
 TCTGTGATCGGCACGGCTGGACTACTGACGGTTTCTGGTGGCAATCCTGGATGATCTCTATGCATC  
 CAATATTCCTGTGTACCCTTCTGTCAGCGACCCGGAGACCTCGTGTGGATTAATGCGGGGACTGTGCAC  
 TGGGTGCAGGCCACCGCTGGTGAACAACATTGCCTGGAACGTGGGGCCCTCACCGCTATCAGTACC  
 AGCTGGCCCTGGAACGATACGAGTGAATGAGGTGAAGAAGTCAAAATCCATCGTCCCATGATTACGT  
 GTCATGGAACGTGGCTCGCACGGTCAAAATCAGCGACCCCGACTGTTCAAGATGATCAAGTTCTGCCTG  
 CTGCAGTCCATGAAGCACTGCCAGGTGCAACGCGAGAGCCTGGTGCGGCAGGGAAGAAAATCGCTTACC  
 AGGGCCGTGTCAAGGACGAGCCAGCCTACTACTGCAACGAGTGCATGTGGAGGTGTTTAAACCTCTGTT  
 CGTGACAAGTGAAGTGGCAGCCGAACACGTACCTGGTACACTGCGAGGGCTGTGCCCGCGCCGACG  
 GCAGGCCCTGCAGGGCGTGGTGGTGTGGAGCAGTACCGCACTGAGGAGTGGCTCAGGCCTACGACGCCCT  
 TCACGCTGGTGAAGGCCCGGGCGGGCAGCGGAGGAGGGCACTGGGGCAGGCTGCAGGGACGGG  
 CTTTCGGGAGCCCGGGCGCCTTCCCTGAGCCCCCGGGCTTCTCCCCCAGGCCACAGCAGCAGC  
 TCGCGA

ACGCGTACGCGGCCGCTCGAGCAGAACTCATCTCAGAAGAGGATCTGGCAGCAATGATATCCTGGATT  
ACAAGGATGACGACGATAAGGTTTAA

**Protein Sequence:**

>RC219461 representing NM\_001080424  
Red=Cloning site Green=Tags(s)

MHRAVDPPGARAAREAFALGGLSCAGAWSSCPPHPPRSAWLPGGRCSASIGQPPLPAPLPPSHGSSSGH  
PSKPYIYAPGAPTRPLHGKLESLHGCVQALLREPAQPGLWEQGLYESEHDSEEATRCYHSALRYGGSF  
AELGPRIGRLQQAQLWNFHTGSCQHRAKVLPPLLEQVWNLHLEHKRNYGAKRGGPPVKRAEPPVQVVPV  
PAALSGPSGEEGLSPGGKRRRGCNSEQTGLPPGLPLPPPPLPPPPPPPPPPPLPGLATSPPFQLTKPG  
LWSTLHGDAWGPERKGSAPPERQEQRHSLPHYPYPAPAYTAHPPGHRLVPAAPPGGPRPPGAESHGCL  
PATRPPGSDLRESRVQSRMDSSVSPAATTACVPYAPSRPPGLPGTTTTSSSSSSSNTGLRGVPEPNPGIP  
GADHYQTPALEVSHHGRLGPSAHSRKPFLGAPAAATPHLSLPPGPSPPPPPCPRLLRPPPPAWLKGPA  
CRAAREDEGEILEELFFGTEGPPRPAPPPLPHREGFLGPPASRFVSGTQDSHTPTPTPTTSSSNSNGS  
HSSSPAGPVSFPPPYLARSIDPLPRPPSPAQNPQDPPLVPLTLALPPAPPSSCHQNTSGSFRRPESPRP  
RVSFPKTPEVGPVPPGGLSKAPQPVPPGVGELPARGPRLDFPPTPLEDQFEPAEFKILPDGLANIMK  
MLDESIRKEEQQHEAGVAPQPPLKEPFASLQSPFPTDTAPTTTAPAVAVTTTTTTTTTATQEEKK  
PPPALPPPPLAKFPPPSQPQPPPPPPSPASLLKSLASVLEGGKCYRGTGAAVSTRPGLPTTQYSPG  
PPSGATALPPTSAAPSAQSPQPSASSSSQFSTSGGPWARERRAGEEVPVGPMTPTQPPPPLSLPPARSE  
SEVLEEISRACETLVERVGRSATDPADPVDTAEPADSGTERLLPPAQAKEEAGGVAAVSGSCKRRQKEHQ  
KEHRRRHRACKDSVGRPPREGRKAKAKVPKEKSRRVLGNLDLQSEEIQGREKSRPDLGGASKAKPPTAP  
APPSAPAPSAQTPPSASVPGKKAREEAPGPPGVSADMLKLRSLSEGPPKELKIRLIKVESGDKETFIA  
SEVEERRLRMADLTI SHCAADVVRASRNAKVKGFRESYLSPAQSVKPKINTEEKLPREKLNPPPTSIYL  
ESKRDAFSPVLLQFCTDPRNPITVIRGLAGSLRLNLGLFSTKTLVEASGEHTVEVRTQVQQPSDENWDLT  
GTRQIWPCESSRSHTTIAKYAQYQASSFQESLQEEKESEDEESEEPDSTTGTPSSAPDPKNHHIIFGT  
NIDLSDAKRWKPLQELLKLPAFMRVTSTGNMLSHVGHITLGMNTVQLYMKVPGSRTPGHQENNNFCSVN  
INIGPGDCEWFVHEHYWETISAFCDRHGVDYLTGSWWPILDDL YASNIPVYRFVQRPGDLVWINAGTVH  
WVQATGWCNNIAWNVGPLTAYQYQLALERYEWEVKNVKSIVPMIHVSWNVARTVKISDPDLFKMIKFCL  
LQSMKHCQVQRESLVRAGKKIAYQGRVKDEPAYCNECDVEVFNILFVTSENGSRNTYL VHCEGCARRRS  
AGLQGVVLEQYRTEELAQAYDAFTLVRARRARGQRRRALGQAAGTGFGSPAAPFPEPPPAFSPQAPAST  
SR

TRTRPLEQKLISEEDLAANDILDYKDDDDKV

**Chromatograms:**

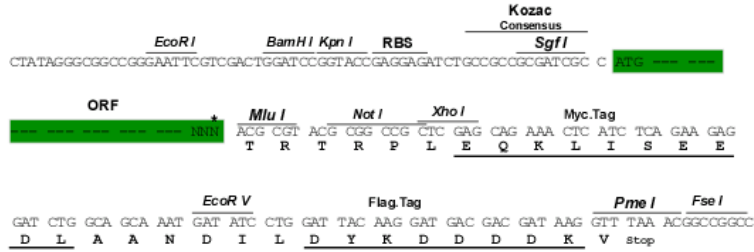
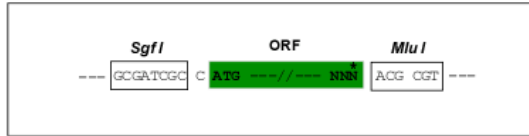
[https://cdn.origene.com/chromatograms/mg3517\\_f02.zip](https://cdn.origene.com/chromatograms/mg3517_f02.zip)

**Restriction Sites:**

SgfI-MluI

Cloning Scheme:

Cloning sites used for ORF Shuttling:



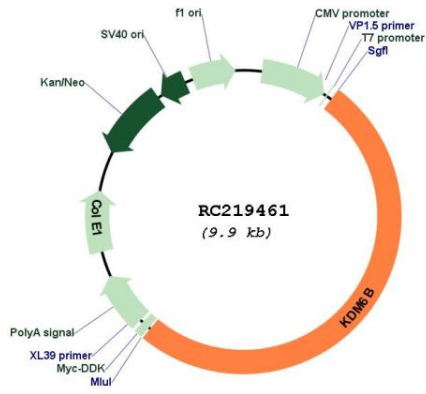
\* The last codon before the Stop codon of the ORF

ACCN: NM\_001080424

ORF Size: 5046 bp

<b>OTI Disclaimer:</b>	<p>Due to the inherent nature of this plasmid, standard methods to replicate additional amounts of DNA in E. coli are highly likely to result in mutations and/or rearrangements. Therefore, OriGene does not guarantee the capability to replicate this plasmid DNA. Additional amounts of DNA can be purchased from OriGene with batch-specific, full-sequence verification at a reduced cost. Please contact our customer care team at <a href="mailto:custsupport@origene.com">custsupport@origene.com</a> or by calling 301.340.3188 option 3 for pricing and delivery.</p> <p>The molecular sequence of this clone aligns with the gene accession number as a point of reference only. However, individual transcript sequences of the same gene can differ through naturally occurring variations (e.g. polymorphisms), each with its own valid existence. This clone is substantially in agreement with the reference, but a complete review of all prevailing variants is recommended prior to use. <a href="#">More info</a></p>
<b>OTI Annotation:</b>	This clone was engineered to express the complete ORF with an expression tag. Expression varies depending on the nature of the gene.
<b>Components:</b>	The ORF clone is ion-exchange column purified and shipped in a 2D barcoded Matrix tube containing 10ug of transfection-ready, dried plasmid DNA (reconstitute with 100 ul of water).
<b>Reconstitution Method:</b>	<ol style="list-style-type: none"> <li>1. Centrifuge at 5,000xg for 5min.</li> <li>2. Carefully open the tube and add 100ul of sterile water to dissolve the DNA.</li> <li>3. Close the tube and incubate for 10 minutes at room temperature.</li> <li>4. Briefly vortex the tube and then do a quick spin (less than 5000xg) to concentrate the liquid at the bottom.</li> <li>5. Store the suspended plasmid at -20°C. The DNA is stable for at least one year from date of shipping when stored at -20°C.</li> </ol>
<b>RefSeq:</b>	<a href="#">NM_001080424.2</a>
<b>RefSeq Size:</b>	6704 bp
<b>RefSeq ORF:</b>	5049 bp
<b>Locus ID:</b>	23135
<b>UniProt ID:</b>	<a href="#">O15054</a>
<b>Cytogenetics:</b>	17p13.1
<b>MW:</b>	180.5 kDa
<b>Gene Summary:</b>	<p>The protein encoded by this gene is a lysine-specific demethylase that specifically demethylates di- or tri-methylated lysine 27 of histone H3 (H3K27me2 or H3K27me3). H3K27 trimethylation is a repressive epigenetic mark controlling chromatin organization and gene silencing. This protein can also demethylate non-histone proteins such as retinoblastoma protein. Through its demethylation activity this gene influences cellular differentiation and development, tumorigenesis, inflammatory diseases, and neurodegenerative diseases. This protein has two classical nuclear localization signals at its N-terminus. Alternative splicing results in multiple transcript variants encoding distinct isoforms. [provided by RefSeq, Feb 2017]</p>

Product images:



Circular map for RC219461