

Product datasheet for **RC219458**

CD272 (BTLA) (NM_181780) Human Tagged ORF Clone

Product data:

Product Type:	Expression Plasmids
Product Name:	CD272 (BTLA) (NM_181780) Human Tagged ORF Clone
Tag:	Myc-DDK
Symbol:	CD272
Synonyms:	BTLA1; CD272
Mammalian Cell Selection:	Neomycin
Vector:	pCMV6-Entry (PS100001)
E. coli Selection:	Kanamycin (25 ug/mL)
ORF Nucleotide Sequence:	>RC219458 representing NM_181780 Red=Cloning site Blue=ORF Green=Tags(s)

TTTTGTAATACGACTCACTATAGGGCGCCGGGAATTCGTCGACTGGATCCGGTACCGAGGAGATCTGCC
GCC**CGGATCGCC**

ATGAAGACATTGCCTGCCATGCTTGGAAGTGGGAAATTATTTGGGTCTTCTTAAATCCCATATCTGG
ACATCTGGAACATCCATGGGAAAGAATCATGTGATGTACAGCTTTATATAAAGAGACAATCTGAACACTC
CATCTTAGCAGGAGATCCCTTTGAACTAGAATGCCCTGTGAAATACTGTGCTAACAGGCCTCATGTGACT
TGTTGCAAGCTCAATGGAACAACATGTGTAAAACCTGAAGATAGACAAACAAGTTGGAAGGAAGAGAAGA
ACATTTTCATTTTTCATTCTACATTTTGAACCAGTCTTCTAATGACAATGGGTCATACCGCTGTTCTGC
AAATTTTCAGTCTAATCTCATTGAAAGCCACTCAACAACCTTTTATGTGACAGATGTAAAAAGTGCCTCA
GAACGACCTCCAAGGACGAAATGGCAAGCAGACCCTGGCTCCTGTATAGTTTACTTCTTTGGGGGAT
TGCTCTACTCATCACTACCTGTTTCTGCCTGTTCTGCTGCCTGAGAAGGCACCAAGGAAAGCAAAATGA
ACTCTCTGACACAGCAGGAAGGGAAATTAACCTGGTTGATGCTCACCTTAAGAGTGAGCAAAACAGAAGCA
AGCACCAGGCAAAATCCCAAGTACTGCTATCAGAAACTGGAATTTATGATAATGACCCTGACCTTTGTT
TCAGGATGCAGGAAGGTCTGAAGTTTATTCTAATCCATGCCTGGAAGAAAACAAACCAGGCATTGTTTA
TGCTTCCCTGAACCATTCTGTATTGGACTGAAGTCAAGACTGGCAAGAAATGTAAAAGAAGCACCAACA
GAATATGCATCCATATGTGTGAGGAGT

ACGCGTACGCGGCCGCTCGAGCAGAAACTCATCTCAGAAGAGGATCTGGCAGCAAATGATATCCTGGATT
ACAAGGATGACGACGATAAGGTTTAA



[View online »](#)

Protein Sequence: >RC219458 representing NM_181780
Red=Cloning site Green=Tags(s)

MKTLPAMLGTGKLFWVFFLIPYLDIWNHIGKESCDVQLYIKRQSEHSILAGDPFELECPVKYCANRPHVT
 WCKLNGTTCVKLEDRQTSWKEEKNISFFILHFEPVLPNDNGSYRCSANFQSNLIESHSTTLVYTDVKSAS
 ERPSKDEMASRPWLLYSLPLGGLPLLITTCFLFCCLRRHQGKQNELSDTAGREINLVAHLKSEQTEA
 STRQNSQVLLSETGIYDNDPDLCFRMQEGSEVYSNPCLLENKPGIVYASLNHSVIGLNSRLARNVKEAPT
 EYASICVRS

TRTRPLEQKLISEEDLAANDILDYKDDDDKV

Chromatograms: https://cdn.origene.com/chromatograms/mk6114_d04.zip

Restriction Sites: SgfI-MluI

Cloning Scheme:



ACCN: NM_181780

ORF Size: 867 bp

OTI Disclaimer: The molecular sequence of this clone aligns with the gene accession number as a point of reference only. However, individual transcript sequences of the same gene can differ through naturally occurring variations (e.g. polymorphisms), each with its own valid existence. This clone is substantially in agreement with the reference, but a complete review of all prevailing variants is recommended prior to use. [More info](#)

OTI Annotation: This clone was engineered to express the complete ORF with an expression tag. Expression varies depending on the nature of the gene.

Components: The ORF clone is ion-exchange column purified and shipped in a 2D barcoded Matrix tube containing 10ug of transfection-ready, dried plasmid DNA (reconstitute with 100 ul of water).

Reconstitution Method:

1. Centrifuge at 5,000xg for 5min.
2. Carefully open the tube and add 100ul of sterile water to dissolve the DNA.
3. Close the tube and incubate for 10 minutes at room temperature.
4. Briefly vortex the tube and then do a quick spin (less than 5000xg) to concentrate the liquid at the bottom.
5. Store the suspended plasmid at -20°C. The DNA is stable for at least one year from date of shipping when stored at -20°C.

Note: Plasmids are not sterile. For experiments where strict sterility is required, filtration with 0.22um filter is required.

RefSeq: [NM_181780.4](#)

RefSeq Size: 1239 bp

RefSeq ORF: 870 bp

Locus ID: 151888

UniProt ID: [Q7Z6A9](#)

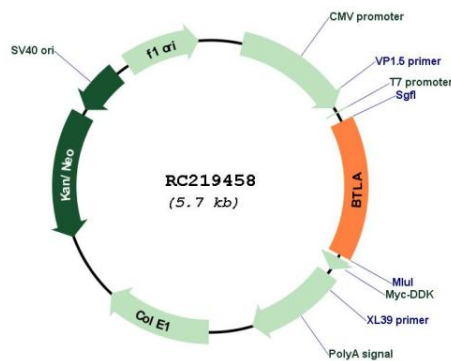
Cytogenetics: 3q13.2

Protein Families: Transmembrane

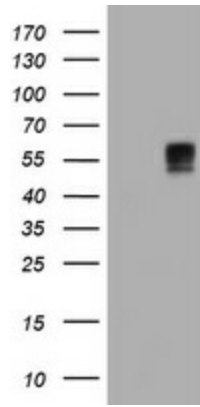
MW: 32.6 kDa

Gene Summary: This gene encodes a member of the immunoglobulin superfamily. The encoded protein contains a single immunoglobulin (Ig) domain and is a receptor that relays inhibitory signals to suppress the immune response. Alternative splicing results in multiple transcript variants. Polymorphisms in this gene have been associated with an increased risk of rheumatoid arthritis. [provided by RefSeq, Aug 2011]

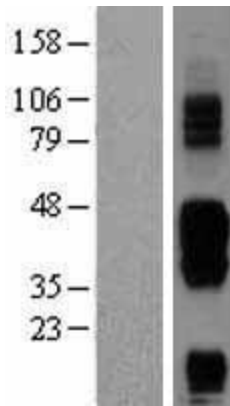
Product images:



Circular map for RC219458



HEK293T cells were transfected with the pCMV6-ENTRY control (Cat# [PS100001], Left lane) or pCMV6-ENTRY BTLA (Cat# RC219458, Right lane) cDNA for 48 hrs and lysed. Equivalent amounts of cell lysates (5 ug per lane) were separated by SDS-PAGE and immunoblotted with anti-BTLA (Cat# [TA505688]). Positive lysates [LY403628] (100ug) and [LC403628] (20ug) can be purchased separately from OriGene.



Western blot validation of overexpression lysate (Cat# [LY403628]) using anti-DDK antibody (Cat# [TA50011-100]). Left: Cell lysates from untransfected HEK293T cells; Right: Cell lysates from HEK293T cells transfected with RC219458 using transfection reagent MegaTran 2.0 (Cat# [TT210002]).



Coomassie blue staining of purified BTLA protein (Cat# [TP319458]). The protein was produced from HEK293T cells transfected with BTLA cDNA clone (Cat# RC219458) using MegaTran 2.0 (Cat# [TT210002]).