

Product datasheet for **RC219453**

Natriuretic Peptide Receptor C (NPR3) (NM_000908) Human Tagged ORF Clone

Product data:

Product Type:	Expression Plasmids
Product Name:	Natriuretic Peptide Receptor C (NPR3) (NM_000908) Human Tagged ORF Clone
Tag:	Myc-DDK
Symbol:	Natriuretic Peptide Receptor C
Synonyms:	ANP-C; ANPR-C; ANPRC; C5orf23; GUCY2B; NPR-C; NPRC
Mammalian Cell Selection:	Neomycin
Vector:	pCMV6-Entry (PS100001)
E. coli Selection:	Kanamycin (25 ug/mL)



[View online »](#)

ORF Nucleotide Sequence:

>RC219453 representing NM_000908
 Red=Cloning site Blue=ORF Green=Tags(s)

TTTTGTAATACGACTCACTATAGGGCGGCCGGGAATTCGTCGACTGGATCCGGTACCGAGGAGATCTGCC
 GCCCGCATCGCC

ATGCCGTCTCTGCTGGTGTCTCACTTTCTCCCCGTGCTACTACTCGGCTGGGCGTTGCTGGCCGGCGCA
 CCGGTGGCGGTGGCGTTGGCGGCCGGCGGGTGGCGCGGCATAGCGCGCGGACGCCAGGAGAGAGAGGC
 GCTGCCGCCACAGAAGATCGAGGTGCTGGTGTACTGCCCCAGGATGACTCGTACTTGTTCCTCACTACC
 CGGGTGGCGGCCGATCGAGTATGCTCTGCGCAGCGTGGAGGGCAACGGGACTGGGAGGCGGCTTCTGC
 CGCCGGGCACTCGCTTCCAGGTGGCTTACGAGGATTACAGACTGTGGGAACCGTGCCTTTCAGCTTGGT
 GGACCGGTGGCGGCCGCGGGCGCCAAGCCAGACCTATCCTGGGGCCAGTGTGCGAGTATGCAGCA
 GCGCCAGTGGCCCGCTTGCATCGCACTGGACCTGCCATGCTGTGGCTGGGGCGCTGGCCGCTGGCT
 TCCAGCACAAGGACTCTGAGTACTCGCACCTCACGCGGTGGCGCCGCCTACGCCAAGATGGGCGAGAT
 GATGCTCGCCCTGTTCCGCCACCACCCTGGAGCCGCGTGCCTGGTCTACAGCGACGACAAGCTGGAG
 CGGAAGTCTACTTCACCTCGAGGGGGTCCACGAGGTCTCCAGGAGGAGGGTTTGACACGTCATCT
 ACAGTTTCGACGAGACCAAGACTTGGATCTGGAAGACATCGTGCCAATATCCAGGCCAGTGAGAGAGT
 GGTGATCATGTGTGCGAGCAGTGACACCATCCGGAGCATCATGCTGGTGGCGCACAGGCATGGCATGACC
 AGTGGAGACTACGCTTCTTCAACATTGAGCTCTTCAACAGCTCTTCTATGGAGATGGCTCATGGAAGA
 GAGGAGACAAACGACTTTGAGCTAAGCAAGCATACTCGTCCCTCCAGACAGTCACTCTACTGAGGAC
 AGTGAAACCTGAGTTTGAAGAAGTTTCCATGGAGGTGAAAAGTTACAGTTGAGAAAACAGGGCTCAATG
 GAGGATTACGTTAACATGTTTGTGAAGGATCCACGATGCCATCCTCTACGTTTGGCTCTACATG
 AAGTACTCAGAGCTGGTTACAGCAAAAAGGATGGAGGGAAAATTATACAGCAGACTTGAACAGAACAT
 TGAAGGTATCGCCGGGCAGGTGTCCATAGATGCCAACGGAGACCGATATGGGGATTTCTCTGTGATTGCC
 ATGACTGATGTGGAGGCGGCCACCCAGGAGTTATTGGTATTATTTGAAAAGAAGGTCGTTTTGAAA
 TGCGGCCGAATGTCAAATATCCTTGGGGCCCTTAAAAGTGAAGTAGATGAAAACCGAATTGTAGAGCA
 TACAAACAGCTCTCCCTGCAAATCATGTGGCCTAGAAGAATCGGCAGTGACAGGAATTGCTGTGGGGCT
 TACTAGGAGCTGGCTTGTAAATGGCCTTCTACTTTTTCAGGAAGAAATACAGAATAACCATGAGAGGC
 GAACCCAGCAAGAAGAAAGTAACCTTGGAAAACATCGGGAATTACGGGAAGATTCATCAGATCCCATT
 TTCAGTAGCT

ACGCGTACGCGGCCGCTCGAGCAGAAACTCATCTCAGAAGAGGATCTGGCAGCAAATGATATCCTGGATT
 ACAAGGATGACGACGATAAGGTTTAA

Protein Sequence:

>RC219453 representing NM_000908
 Red=Cloning site Green=Tags(s)

MPSLLVLTFSPCVLLGWALLAGGTGGGGVGGGGGAGIGGGRQEREALPPQKIEVLVLLPQDDSYLFSLT
 RVRPAIEYALRSVEGNGTGRRLLPPGTRFQVAYEDSDCGNRALFSLVDRVAAAARGAKPDLILGPVCEYAA
 APVARLASHWDLPLMSAGALAAGFQHKDSEYSHLTRVAPAYAKMGEMMLALFRHHHWSRAALVYSDDKLE
 RNCYFTLEGVHEVFQEGLHTSIYSFDETKDLLEDIVRNIQASERVVIMCASSDTRISIMLVAHRHGMT
 SGDYAFFNIELFNSSSYGDGSKRGDKHDFEAKQAYSSLQTVTLRLVKPEFEKFSMEVKSSVEKQGLNM
 EDYVNMVVEGFHDAILLVYLALHEVLRAGYSKKDGGKIIQQTWNRTFEGIAGQVSDANGDRYGDVSVIA
 MTDVEAGTQEVIGDYFGKEGRFEMRPNVKYPWGPKLRIDENRIVEHTNSPCKSCGLEESAVTGIVVGA
 LLGAGLLMAFYFRKKYRITIERRTQEEENLKGHRELREDSIRSHFSVA

TRTRPLEQKLISEEDLAANDILDYKDDDDKV

Chromatograms:

https://cdn.origene.com/chromatograms/mg3938_d07.zip

Restriction Sites:

Sgfl-Mlul

Cloning Scheme:



ACCN: NM_000908

ORF Size: 1620 bp

OTI Disclaimer: Due to the inherent nature of this plasmid, standard methods to replicate additional amounts of DNA in E. coli are highly likely to result in mutations and/or rearrangements. Therefore, OriGene does not guarantee the capability to replicate this plasmid DNA. Additional amounts of DNA can be purchased from OriGene with batch-specific, full-sequence verification at a reduced cost. Please contact our customer care team at custsupport@origene.com or by calling 301.340.3188 option 3 for pricing and delivery.

The molecular sequence of this clone aligns with the gene accession number as a point of reference only. However, individual transcript sequences of the same gene can differ through naturally occurring variations (e.g. polymorphisms), each with its own valid existence. This clone is substantially in agreement with the reference, but a complete review of all prevailing variants is recommended prior to use. [More info](#)

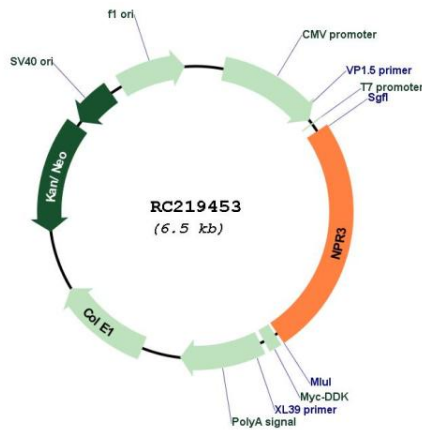
OTI Annotation: This clone was engineered to express the complete ORF with an expression tag. Expression varies depending on the nature of the gene.

Components: The ORF clone is ion-exchange column purified and shipped in a 2D barcoded Matrix tube containing 10ug of transfection-ready, dried plasmid DNA (reconstitute with 100 ul of water).

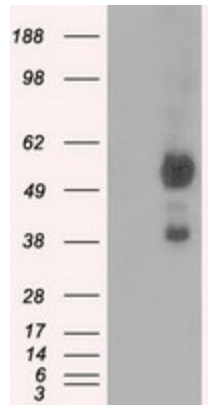
- Reconstitution Method:
1. Centrifuge at 5,000xg for 5min.
 2. Carefully open the tube and add 100ul of sterile water to dissolve the DNA.
 3. Close the tube and incubate for 10 minutes at room temperature.
 4. Briefly vortex the tube and then do a quick spin (less than 5000xg) to concentrate the liquid at the bottom.
 5. Store the suspended plasmid at -20°C. The DNA is stable for at least one year from date of shipping when stored at -20°C.

Note:	Plasmids are not sterile. For experiments where strict sterility is required, filtration with 0.22um filter is required.
RefSeq:	NM_000908.4
RefSeq Size:	2651 bp
RefSeq ORF:	1623 bp
Locus ID:	4883
UniProt ID:	P17342
Cytogenetics:	5p13.3
Domains:	ANF_receptor
Protein Families:	Druggable Genome, Transmembrane
MW:	59.6 kDa
Gene Summary:	This gene encodes one of three natriuretic peptide receptors. Natriuretic peptides are small peptides which regulate blood volume and pressure, pulmonary hypertension, and cardiac function as well as some metabolic and growth processes. The product of this gene encodes a natriuretic peptide receptor responsible for clearing circulating and extracellular natriuretic peptides through endocytosis of the receptor. Multiple transcript variants encoding different isoforms have been found for this gene.[provided by RefSeq, Feb 2011]

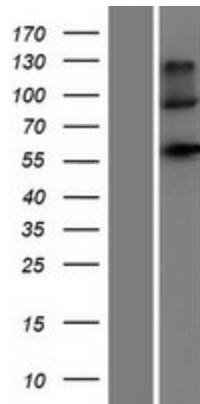
Product images:



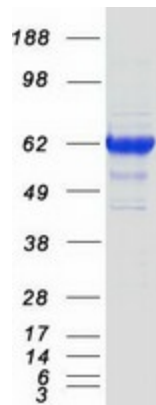
Circular map for RC219453



HEK293T cells were transfected with the pCMV6-ENTRY control (Cat# [PS100001], Left lane) or pCMV6-ENTRY NPR3 (Cat# RC219453, Right lane) cDNA for 48 hrs and lysed. Equivalent amounts of cell lysates (5 ug per lane) were separated by SDS-PAGE and immunoblotted with anti-NPR3(Cat# [TA501080]). Positive lysates [LY424462] (100ug) and [LC424462] (20ug) can be purchased separately from OriGene.



Western blot validation of overexpression lysate (Cat# [LY424462]) using anti-DDK antibody (Cat# [TA50011-100]). Left: Cell lysates from untransfected HEK293T cells; Right: Cell lysates from HEK293T cells transfected with RC219453 using transfection reagent MegaTran 2.0 (Cat# [TT210002]).



Coomassie blue staining of purified NPR3 protein (Cat# [TP319453]). The protein was produced from HEK293T cells transfected with NPR3 cDNA clone (Cat# RC219453) using MegaTran 2.0 (Cat# [TT210002]).