

Product datasheet for **RC219441**

cleavage stimulation factor (CSTF1) (NM_001033521) Human Tagged ORF Clone

Product data:

Product Type:	Expression Plasmids
Product Name:	cleavage stimulation factor (CSTF1) (NM_001033521) Human Tagged ORF Clone
Tag:	Myc-DDK
Symbol:	cleavage stimulation factor
Synonyms:	CstF-50; CstFp50
Mammalian Cell Selection:	Neomycin
Vector:	pCMV6-Entry (PS100001)
E. coli Selection:	Kanamycin (25 ug/mL)



[View online »](#)

ORF Nucleotide Sequence:

>RC219441 ORF sequence
 Red=Cloning site Blue=ORF Green=Tags(s)

TTTTGTAATACGACTCACTATAGGGCGGCCGGGAATTCGTCGACTGGATCCGGTACCGAGGAGATCTGCC
 GCCCGGATCGCC

ATGTACAGAACCAAAGTGGGCTTGAAGGACCGCCAGCAGCTCTACAAGCTGATCATTAGCCAGCTGCTAT
 ATGACGGCTACATCAGCATCGCCAATGGCCTCATCAATGAAATCAAGCCTCAGTCTGTGTGTCACCCTC
 GGAGCAGCTCCTGCATCTCATCAAACCTCGGAATGAAAAACGATGACACCGCAGTTCAGTATGCAATTGGT
 CGTTTCAGATACTGTTGCCCTGGCACAGGGATTGACCTGGAATTTGATGCAGATGTTGACTATGTCCC
 CAGAGGCTTCTGAGTACGAAACATGCTATGTCACATCACATAAAGGACCATGCCGTGTAGCTACCTATAG
 TAGAGATGGACAGTTAATAGCTACTGGGCTGCTGATGCTTCGATAAAGATACTTGACACAGAGAGGATG
 TTGGCCAAAAGTGCCATGCCAATAGAGGTCATGATGAATGAGACCGCACAAAAATATGGAAAACCACC
 CAGTGATTCGAACTCTTTATGACCATGTGGATGAAGTACGTGCCTTGCTTTCCACCAACAGAACAGAT
 CCTGGCTTCTGGTTCAAGGGATTAACTCTTAAATTTTATTGATTATCCAAACCATCAGCAAAAAGAGCC
 TTCAAATACATTAGGAAGCTGAAATGTTACGTTCCATCTCTTTTCATCCTTCTGGAGACTTTATACTTG
 TCGGAACTCAGCATCCTACTCTTCGCCTTTATGATATCAACACCTTTCAATGTTTGTCTCTTGCAATCC
 TCAAGTCAACACACCGATGCTATATGTTCCGTTAATTACAATCTAGTGCCAATATGTACGTAACCTGGA
 AGCAAGGACGGCTGCATCAAATTATGGGATGGTGTTCAAATCGATGCATCACACTTTTGAGAAAAGCAC
 ATGACGGTGTGAAGTTTGTCTGCCATTTTTTCCAAAATTCTAAATACATTCTCTCAAGTGGAAAAGA
 CTCTGTAGCTAACTTTGGGAAATCAACGGGACGAACACTGGTCAGATACACGGGCGCGGGTTAAGT
 GGACGCCAGGTGCACCGGACACAGGCTGTGTTAACCACACCGAGGACTATGTGTTGCTGCCCGACGAGA
 GGACGATCAGTCTTTGCTGCTGGACTCGAGGACAGCCGAGCGGAGAAACCTGCTGCTGTTGGGGCACAA
 CAATATTGTACGCTGCATAGTGCACTCCCCACCAACCCCGGGTTCATGACGTGCAGCGATGACTTCAGA
 GCGCGTTTTTGTACCGGAGATCGACCACTGAC

ACGCGTACGCGGCCGCTCGAGCAGAAACTCATCTCAGAAGAGGATCTGGCAGCAATGATATCCTGGATT
 ACAAGGATGACGACGATAAGGTTTAA

Protein Sequence:

>RC219441 protein sequence
 Red=Cloning site Green=Tags(s)

MYRTKVGKDRQQLYKLIISQLLYDGYISIANGLINEIKPQSVCAPSEQLLHLIKLGMENDDTAVQYAIG
 RSDTVAPGTGIDLEFDADVQTMSPLEASEYETCYVTSKGPVATYSRDGQLIATGSADASIKILDTERM
 LAKSAMP I EVMMNETAQNMENHPVIRTLYDHVDEVTCLAFHPTEQILASGRDYTLKLFDYKPSAKRA
 FKYIQEAEMLRISFHPSGDFILVGTQHPTLRLYDINTFQCFVSCNPQDQHTDAICSVNYNSSANMYVTG
 SKDGCIKLWDGVSNRCITTFEKAHDGAEVCSAIFSKNSKYILSSGKDSVAKLWEISTGRTLVRVTGAGLS
 GRQVHRTQAVFNHTEDYVLLPDERTISLCCWDSRTAERRNLLSLGHNNIVRCIVHSPTNPGFMTCSDDFR
 ARFWYRRSTTD

TRTRPLEQKLI SEEDLAANDILDYKDDDDKV

Chromatograms:

https://cdn.origene.com/chromatograms/mk6409_e12.zip

Restriction Sites:

Sgfl-Mlul

Cloning Scheme:



ACCN: NM_001033521

ORF Size: 1293 bp

OTI Disclaimer: The molecular sequence of this clone aligns with the gene accession number as a point of reference only. However, individual transcript sequences of the same gene can differ through naturally occurring variations (e.g. polymorphisms), each with its own valid existence. This clone is substantially in agreement with the reference, but a complete review of all prevailing variants is recommended prior to use. [More info](#)

OTI Annotation: This clone was engineered to express the complete ORF with an expression tag. Expression varies depending on the nature of the gene.

Components: The ORF clone is ion-exchange column purified and shipped in a 2D barcoded Matrix tube containing 10ug of transfection-ready, dried plasmid DNA (reconstitute with 100 ul of water).

Reconstitution Method:

1. Centrifuge at 5,000xg for 5min.
2. Carefully open the tube and add 100ul of sterile water to dissolve the DNA.
3. Close the tube and incubate for 10 minutes at room temperature.
4. Briefly vortex the tube and then do a quick spin (less than 5000xg) to concentrate the liquid at the bottom.
5. Store the suspended plasmid at -20°C. The DNA is stable for at least one year from date of shipping when stored at -20°C.

RefSeq: [NM_001033521.1](#), [NP_001028693.1](#)

RefSeq Size: 2295 bp

RefSeq ORF: 1296 bp

Locus ID: 1477

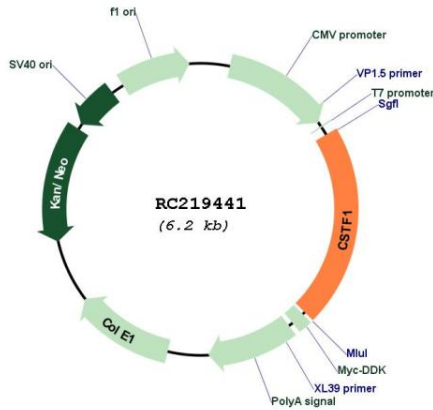
UniProt ID: [Q05048](#)

Cytogenetics: 20q13.2-q13.31

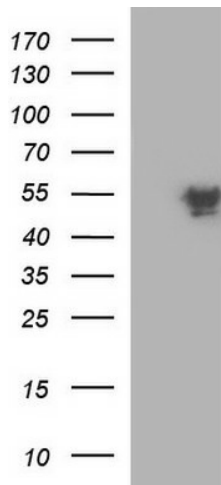
MW: 48.4 kDa

Gene Summary: This gene encodes one of three subunits which combine to form cleavage stimulation factor (CSTF). CSTF is involved in the polyadenylation and 3' end cleavage of pre-mRNAs. Similar to mammalian G protein beta subunits, this protein contains transducin-like repeats. Several transcript variants with different 5' UTR, but encoding the same protein, have been found for this gene. [provided by RefSeq, Jul 2008]

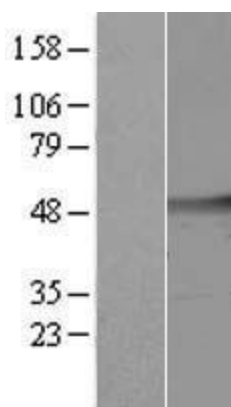
Product images:



Circular map for RC219441



HEK293T cells were transfected with the pCMV6-ENTRY control (Cat# [PS100001], Left lane) or pCMV6-ENTRY CSTF1 (Cat# RC219441, Right lane) cDNA for 48 hrs and lysed. Equivalent amounts of cell lysates (5 ug per lane) were separated by SDS-PAGE and immunoblotted with anti-CSTF1 (Cat# [TA590762]). Positive lysates [LY425563] (100ug) and [LC425563] (20ug) can be purchased separately from OriGene.



Western blot validation of overexpression lysate (Cat# [LY422380]) using anti-DDK antibody (Cat# [TA50011-100]). Left: Cell lysates from untransfected HEK293T cells; Right: Cell lysates from HEK293T cells transfected with RC219441 using transfection reagent MegaTran 2.0 (Cat# [TT210002]).