

Product datasheet for RC219439

METTL2B (NM_018396) Human Tagged ORF Clone

Product data:

Product Type:	Expression Plasmids
Product Name:	METTL2B (NM_018396) Human Tagged ORF Clone
Tag:	Myc-DDK
Symbol:	METTL2B
Synonyms:	METL; METTL2; METTL2A; PSENIP1
Mammalian Cell Selection:	Neomycin
Vector:	pCMV6-Entry (PS100001)
E. coli Selection:	Kanamycin (25 ug/mL)
ORF Nucleotide Sequence:	>RC219439 representing NM_018396 Red=Cloning site Blue=ORF Green=Tags(s)

TTTTGTAATACGACTCACTATAGGGCGGCCGGAATTCGTCGACTGGATCCGGTACCGAGGAGATCTGCC
GCC**CGATCGCC**

ATGGCCGGCTCCTACCCTGAAGGTGCACCTGCAGTCTCGCCGATAAGAGGCAGCAGTTCGGAAGCCGGT
TCCTGAGAGATCCGGCGCGCTCTCCACCACAATGCCTGGGACAATGTGGAGTGGTCGGAAGAGCAAGC
CGCGGCCGCGGAGAGAAAAGTCCAGGAGAACAGTATCCAGCGGGTGTGCCAGGAGAAAACAAGTTGATTAT
GAGATCAATGCCACAAACTGGAATGACTTCTACAAAATCCACGAAAATGGGTTTTTCAAGGATAGAC
ATTGGCTTTTTACCGAATCCCTGAGCTGGCACCTAGCCAAAATCAAAATCATTTGAAGGACTGGTTCTT
GGAGAACAAGAGTGAAGTACCTGAATGTAGAAACAATGAGGATGGACCTGGTTAATAATGGAAGAACAG
CACAAGTGTCTTCGAAGAGCCTTGAACATAAAACACAGACACCTCCTGTGGAGGAGAATGTAACCTCAGA
AAATTAGTGACCTGGAATTTGTGCTGATGAGTTTCTGGATCCTCAGCCACCTACCGAATACTGGAGGT
TGGCTGTGGTGTGGGAAACACAGTCTTTCCAATTTACAAACGAACAATGACCCAGGACTCTTTGTTTAT
TGCTGTGATTTTTCTCCACAGCTATAGAACTGGTCCAGACAAATTCAGAATATGATCCTTCTCGGTGTT
TTGCCTTTGTTCCAGACCTGTGTGATGAAGAGAAGAGTTACCCAGTGCCCAAGGGCAGTCTTGATATTAT
CATTCTCATATTTGTTCTTTTCAGCAATTTGTTCCAGACAAGATGCAGAAGGCTATCAACAGGCTGAGCAGG
CTTCTGAAACCTGGCGGGATGATGCTTCTGCGAGATTACGCGCCGCTATGACATGGCTCAGCTTCGGTTTA
AAAAAGGTCAGTGTCTATCTGGAATTTCTACGTGAGAGGTGATGGAACAGAGTTTACTTCTCACACA
AGAGGAACTGGACACGCTTTTACCACCTGCTGGACTGGAAAAAGTTCAGAACCTGGTGGATCGCCGACTG
CAGGTGAACCGAGGAAAGCAACTGACAATGTACCGGGTTTGGATTGAGTCAAAACTGCAAGCCCTTCT
TGTCAGCACCAGC

ACGCGTACGCGGCCGCTCGAGCAGAAACTCATCTCAGAAGAGGATCTGGCAGCAATGATATCCTGGATT
ACAAGGATGACGACGATAAGGTTTAA



[View online >](#)

Protein Sequence: >RC219439 representing NM_018396
Red=Cloning site Green=Tags(s)

MAGSYPEGAPAVLADKRQQFGSRFLRDPARVFFHNAWDNVWSEEQAAAAERKVQENSIQRVCQEKQVDY
 EINAHKYWNDFYKIHENGFFKDRHWFTEFPELAPSQNQNLKDWFLNKSEVPECRNNDGPGIMEEQ
 HKCSSKSLHKTQTPPEENVTKIISDLEICAEFFPGSSATYRILEVCGVGNTVFPILQTNNDPGLFVY
 CCDFSSATAIELVQTNSEYDPSRCFAFVHDLCEEEKSYPVPGKSLDIIILIFVLSAIVPDKMQKAINRLSR
 LLKPGGMMLLRDYGRYDMAQLRFKKGQCLSGNFYVRGDGTRVYFFTQEELDTLFTTAGLEKVQNLVDRRL
 QVNRGKQLTMYRVWIQCKYCKPLLSSTS

TRTRPLEQKLISEEDLAANDILDYKDDDDKV

Chromatograms: https://cdn.origene.com/chromatograms/mg4089_h05.zip

Restriction Sites: SgfI-MluI

Cloning Scheme:



* The last codon before the Stop codon of the ORF

ACCN: NM_018396

ORF Size: 1134 bp

OTI Disclaimer: The molecular sequence of this clone aligns with the gene accession number as a point of reference only. However, individual transcript sequences of the same gene can differ through naturally occurring variations (e.g. polymorphisms), each with its own valid existence. This clone is substantially in agreement with the reference, but a complete review of all prevailing variants is recommended prior to use. [More info](#)

OTI Annotation: This clone was engineered to express the complete ORF with an expression tag. Expression varies depending on the nature of the gene.

Components: The ORF clone is ion-exchange column purified and shipped in a 2D barcoded Matrix tube containing 10ug of transfection-ready, dried plasmid DNA (reconstitute with 100 ul of water).

Reconstitution Method:

1. Centrifuge at 5,000xg for 5min.
2. Carefully open the tube and add 100ul of sterile water to dissolve the DNA.
3. Close the tube and incubate for 10 minutes at room temperature.
4. Briefly vortex the tube and then do a quick spin (less than 5000xg) to concentrate the liquid at the bottom.
5. Store the suspended plasmid at -20°C. The DNA is stable for at least one year from date of shipping when stored at -20°C.

RefSeq Size: 2192 bp

RefSeq ORF: 1137 bp

Locus ID: 55798

UniProt ID: [Q6P1Q9](#)

Cytogenetics: 7q32.1

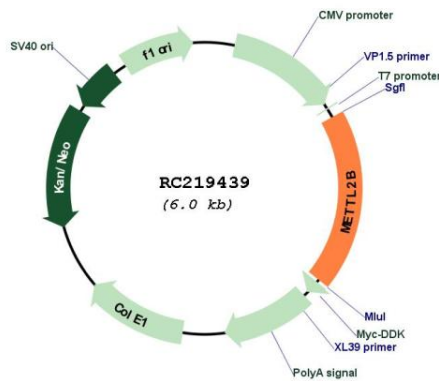
Protein Families: Druggable Genome

Protein Pathways: Androgen and estrogen metabolism, Histidine metabolism, Selenoamino acid metabolism, Tyrosine metabolism

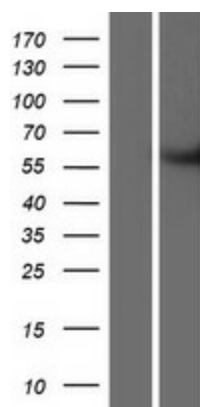
MW: 43.2 kDa

Gene Summary: This gene is a member of a family of methyltransferases that share homology with, but are distinct from, the UbiE family of methyltransferases. Alternatively spliced variants which encode different protein isoforms have been described; however, not all variants have been fully characterized. [provided by RefSeq, Jul 2008]

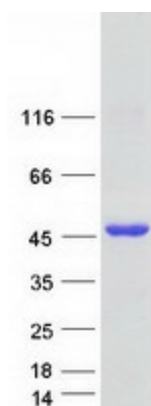
Product images:



Circular map for RC219439



Western blot validation of overexpression lysate (Cat# [LY413061]) using anti-DDK antibody (Cat# [TA50011-100]). Left: Cell lysates from untransfected HEK293T cells; Right: Cell lysates from HEK293T cells transfected with RC219439 using transfection reagent MegaTran 2.0 (Cat# [TT210002]).



Coomassie blue staining of purified METTL2B protein (Cat# [TP319439]). The protein was produced from HEK293T cells transfected with METTL2B cDNA clone (Cat# RC219439) using MegaTran 2.0 (Cat# [TT210002]).