

Product datasheet for **RC219438**

RNF135 (NM_032322) Human Tagged ORF Clone

Product data:

Product Type:	Expression Plasmids
Product Name:	RNF135 (NM_032322) Human Tagged ORF Clone
Tag:	Myc-DDK
Symbol:	RNF135
Synonyms:	L13; MMFD; REUL; Riplet
Mammalian Cell Selection:	Neomycin
Vector:	pCMV6-Entry (PS100001)
E. coli Selection:	Kanamycin (25 ug/mL)



[View online »](#)

ORF Nucleotide
Sequence:

>RC219438 representing NM_032322
Red=Cloning site Blue=ORF Green=Tags(s)

TTTTGTAATACGACTCACTATAGGGCGGCCGGGAATTCGTCGACTGGATCCGGTACCGAGGAGATCTGCC
GCCGCGATCGCC

ATGGCGGGCCTGGGCTGGGCTCCGCCGTTCCCGTGTGGCTGGCCGAGGACGACCTCGGCTGCATCATCT
GCCAGGGGCTGCTGGACTGGCCCGCCACGCTGCCCTGCGGCCACAGCTTCTGCCGCACTGCCTGGAGGC
CCTGTGGGGCGCCGCGACGCCCGCTGGGCTGCCCACTTGCCGCCAGGGCGCCGCGCAGCAGCCG
CACCTGCGGAAGAACACGCTACTGCAGGACCTGGCCGACAAGTACCGCCGCGCCGACGCGAGATACAGG
CGGGCTCCGACCTGCCACTGCCCTGCCCGGCTCCAGTTCCTCTCCAGCGCGGCCGAGGCCCGC
GCGCCGCCGGAAGTGCAGCGGGTGGCAGTAGAGAAGAGCATCACAGAAGTTGCTCAGGAGCTGACAGAG
CTGGTGAACATCTGTAGACATTTGTAGAACCTGCAGAATCAGAGGCCCTATCAGAATCTGGACCAG
ACAACGAACTGAGCATCCTGGCAAGGCTTTTTCTTCTGGGTGGATCTTCCATGGCTTCTCAAAGCT
GGTGACTTCCGACACAGCTGCAGGAAAATCAGAGATATTCTCCATGACCTAGAAGAAATTCAGGAAAA
TTACAAGAAAGCGTCACCTGGAAAGAGGCTCCTGAAGCACAATGCAGGGAGAATCCTGGAAGCCCGT
CTTCTCCTCATGCCATTGCCTGACCAGAGCCACCCTGCACTCAGGAGAGCTTCTCGGTTTGTCTAGT
GGCCATCCATCCAACCTTAACTTGAAGAGCCTTCTGACGCTGGAGGTGTCAGGATTCCCCTACA
GTGACTGTGTCTACCGCCACAAACCTATCGCTGGAGCTGTGAGAGGTTTTCTACCAGCCAGGTCTTAT
GTTCCAGGCCCTGTCTTCTGAAAGCATTACTGGGAAGTGGACACTAGGAATTCAGCCACTGGGCAGT
TGGGTGGCTTCTGGGAGATGAGCCGCGACCAGTCTGGGAAGGACTATGGACTCTTGTGTGTGGAA
TGAAGGGGACTAGCCAGCTCTCTGCATGGCACATGGTCAAGGAAACTGTCTTGGCTCAGACAGACCTG
GGTGGTGGGCATCTGGCTGAACCTTGGAGGGGAAAGCTTGCCTTCTATTGAGTGGACAATCAGGAGAA
GCTTCTGTATGAGTGTACCATCTCTGCCTCCTCTCCTTTGTACCCTGCCTTCTGGCTGTATGGCTTACAT
CCTGGAATTACCTGATAATAAAGCAAGTAAAGGTG

ACGCGTACGCGGCCGCTCGAGCAGAACTCATCTCAGAAGAGGATCTGGCAGCAAATGATATCCTGGATT
ACAAGGATGACGACGATAAGGTTTAA

Protein Sequence:

>RC219438 representing NM_032322
Red=Cloning site Green=Tags(s)

MAGLGLGSAPVWLAEDDLGCIICQGLLDWPATLPCGHSFCRHLEALWGARDARRWACPTCRQGAQQP
HLRKNLTLQDLADKYRRAAREIQAGSDPAHPCPGSSSLSSAAARPRRPELQRVAVEKSITEVAQELTE
LVEHLVDIVRSLQNQRPLSESGPDNELSILGKAFSSGVDLSMASPKLVSDTAAGKIRDILHDLEEIQEK
LQESVTWKEAPEAQMQGELLEAPSSSSCPLPDQSHPALRRASRFQWAIHPTFNLKSLSCSLEVSKDSRT
VTVSHRPQPYRWSCERFSTSQVLCSQALSSGKHYWEVDTRNCSHWAVGVASWEMSRDQVLGRTMDSCCVE
WKGTSQLSAWHMVKETVLGSDRPGVVGIWLNLEEGKLAIFYSDNQEKLLYECTISASSPLYPAFWLYGLH
PGNYLIIKQVKV

TRTRPLEQKLISEEDLAANDILDYKDDDDKV

Chromatograms:

https://cdn.origene.com/chromatograms/mg4267_b09.zip

Restriction Sites:

SgfI-MluI

Cloning Scheme:



ACCN: NM_032322

ORF Size: 1296 bp

OTI Disclaimer: The molecular sequence of this clone aligns with the gene accession number as a point of reference only. However, individual transcript sequences of the same gene can differ through naturally occurring variations (e.g. polymorphisms), each with its own valid existence. This clone is substantially in agreement with the reference, but a complete review of all prevailing variants is recommended prior to use. [More info](#)

OTI Annotation: This clone was engineered to express the complete ORF with an expression tag. Expression varies depending on the nature of the gene.

Components: The ORF clone is ion-exchange column purified and shipped in a 2D barcoded Matrix tube containing 10ug of transfection-ready, dried plasmid DNA (reconstitute with 100 ul of water).

Reconstitution Method:

1. Centrifuge at 5,000xg for 5min.
2. Carefully open the tube and add 100ul of sterile water to dissolve the DNA.
3. Close the tube and incubate for 10 minutes at room temperature.
4. Briefly vortex the tube and then do a quick spin (less than 5000xg) to concentrate the liquid at the bottom.
5. Store the suspended plasmid at -20°C. The DNA is stable for at least one year from date of shipping when stored at -20°C.

RefSeq: [NM_032322.4](#)

RefSeq Size: 2195 bp

RefSeq ORF: 1299 bp

Locus ID: 84282

UniProt ID: [Q8IUD6](#)

Cytogenetics: 17q11.2

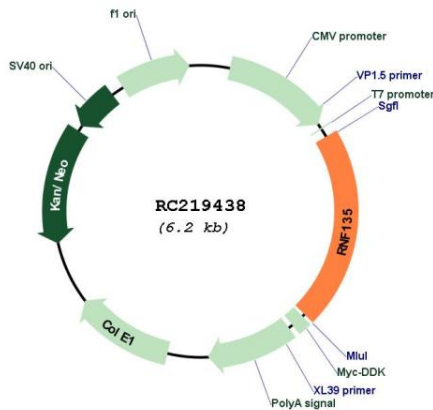
Domains: RING

Protein Families: Druggable Genome

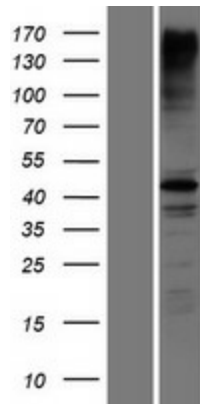
MW: 47.7 kDa

Gene Summary: The protein encoded by this gene contains a RING finger domain, a motif present in a variety of functionally distinct proteins and known to be involved in protein-protein and protein-DNA interactions. This gene is located in a chromosomal region known to be frequently deleted in patients with neurofibromatosis. Alternatively spliced transcript variants encoding distinct isoforms have been reported. [provided by RefSeq, Jul 2008]

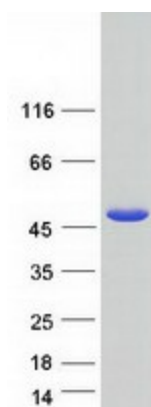
Product images:



Circular map for RC219438



Western blot validation of overexpression lysate (Cat# [LY410198]) using anti-DDK antibody (Cat# [TA50011-100]). Left: Cell lysates from untransfected HEK293T cells; Right: Cell lysates from HEK293T cells transfected with RC219438 using transfection reagent MegaTran 2.0 (Cat# [TT210002]).



Coomassie blue staining of purified RNF135 protein (Cat# [TP319438]). The protein was produced from HEK293T cells transfected with RNF135 cDNA clone (Cat# RC219438) using MegaTran 2.0 (Cat# [TT210002]).